

# U.S. PUBLIC LAND SURVEY MONUMENT RECORD

Index No. E-7-8

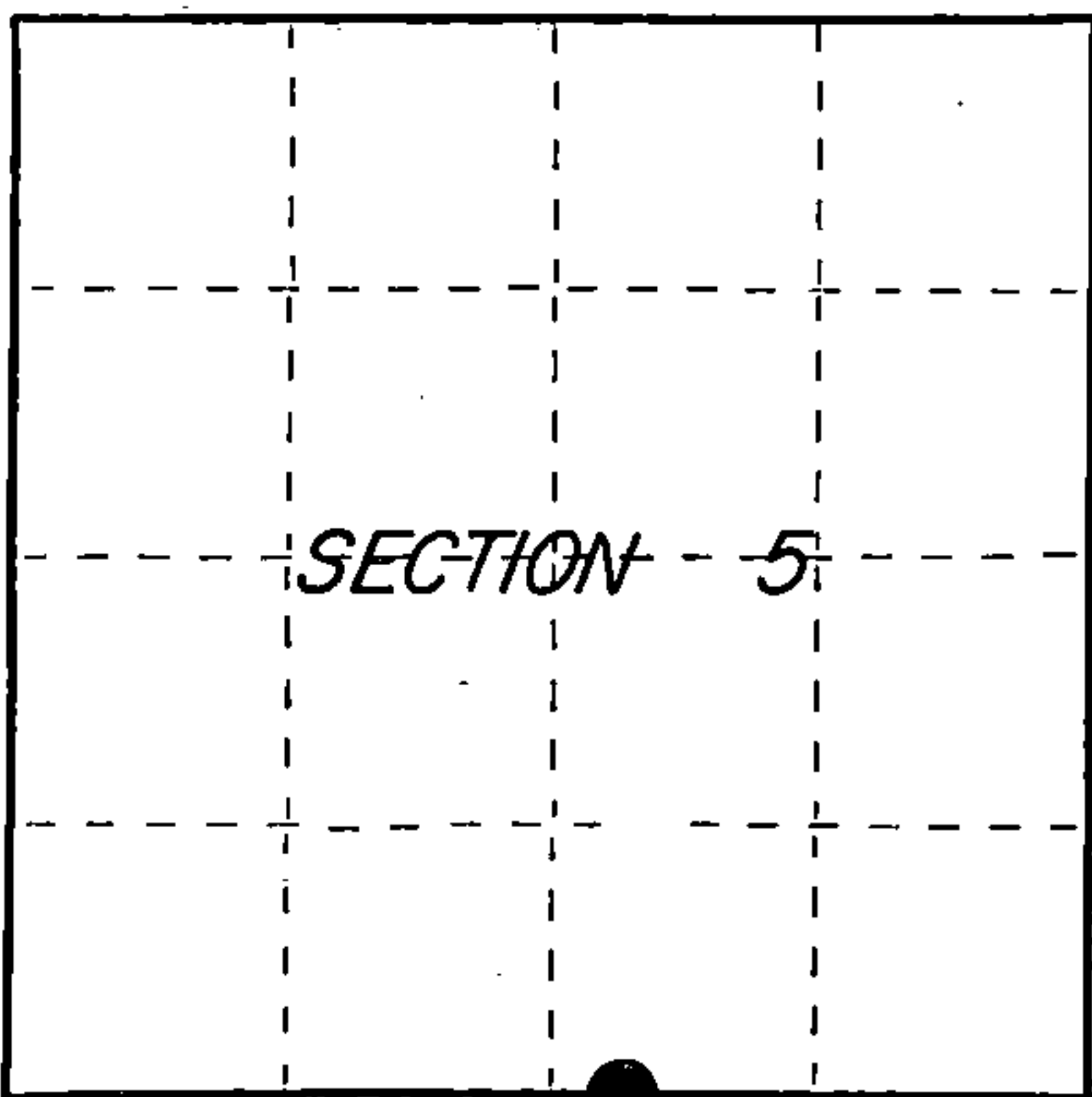
State of Wisconsin

County of Columbia ss.

I, JAMES R. GROTHMAN, do hereby certify that on the 23rd day of October, 1986, I found evidence of the Witness Meander corner of Sections 5 & 8 Township 38 North, Range 12 East, Fourth Principal Meridian, as described hereon; and that from this evidence I established a new monument and accessories as described hereon to perpetuate the original location of this corner.

Resident witnesses:

None



○ = Corner monument restored.

History of original corner establishment: Original survey in 1859 by William E. Daugherty.

Dependent resurvey in 1937 by Wesson Cook. Set a concrete monument, 24 inches long, 6 inch diameter, 20 inches in the ground for a witness to the meander corner between sections 5 & 8 with brass cap marked:

WC / T38N	from which the following bear:		
MC / S5	Spruce 5"	N28-1/4°E	47 lks.
S8	Spruce 5"	S30°E	42 lks
R12E			
1937			

J.F. Resvick in 1963 blazed & scribed the following bearing trees:

Tamarack 3" S74°30'E 22.50'  
Tamarack 3" S13°30'E 43.65'  
Spruce 4" S23°W 17.90'

Description of corner evidence found:

The following bearing trees:

Spruce	5"	S23°W	17.90 feet
Tamarack	3"	S13°30'E	43.65 feet
Tamarack	4"	S74°30'E	22.50 feet

Description of monument and accessories I established to perpetuate the original location of this corner.

Corner position now falls in Woodbury Lake. Forest Service advised not to reset monument in Lake.

Dated at Portage Wis., this 30 day of OCTOBER, 1986

Signature James R. Grothman Title RLS Registration No. 1321  
(County Surveyor, Registered Land Surveyor, or other duly authorized official)

Office of Register of Deeds, County of Forest, I hereby certify that the within instrument was filed in this office for record on the 24th day of February, 1987 at 2:00 o'clock P. M.

Gaul Aschenbrenner  
(Register of Deeds)

By Deputy

FORM NO. 985-A

H.C. Miller Company

Stock No. 26273

DOCUMENT NUMBER  
132144

FOREST COUNTY

REGISTER'S OFFICE  
Forest County, Wis.  
Received for record this 24th day  
of February, A.D., 1987 at  
2:00 o'clock P. M. and recorded  
in Vol. CORNER RESTORATION  
page 5-78  
Gaul Aschenbrenner  
Register of Deeds

43812050018

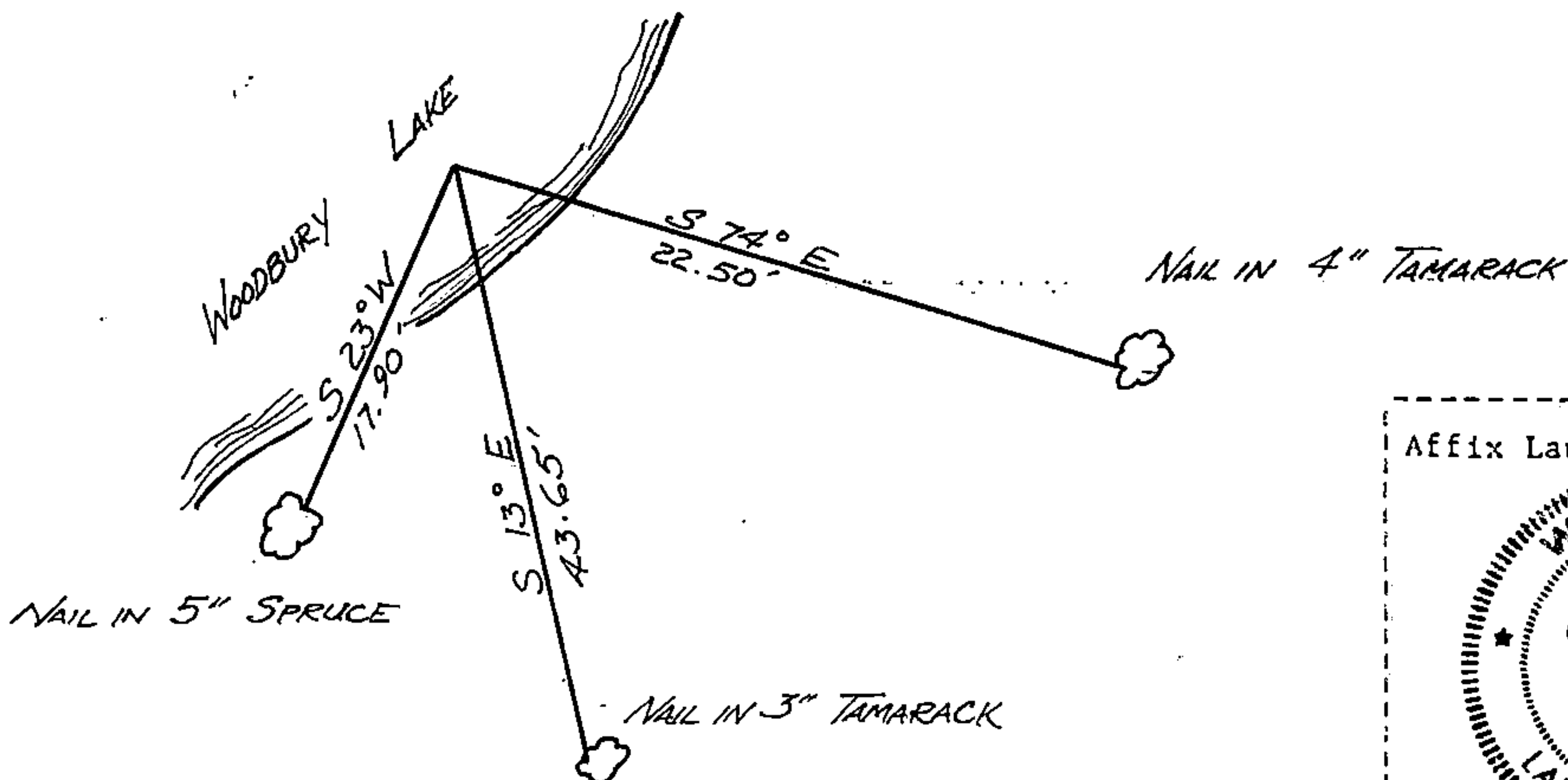
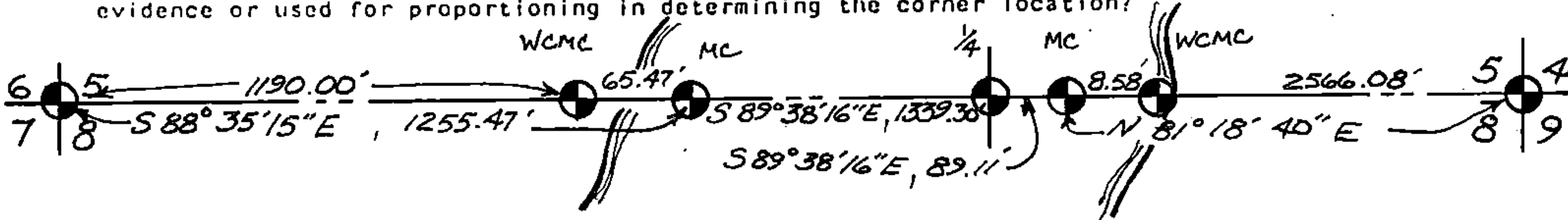
(e) Describe any material discrepancy between the location of the corner as restored or reestablished and the location of that corner as previously restored or reestablished by distance and direction. Show the discrepancy on the plan view drawing under (d), above. Show the distances between the corner as previously restored or reestablished and (1) the corner as restored or reestablished, and (2) to at least 2 of the witness monuments shown on the drawing in (d), above.

See drawing below

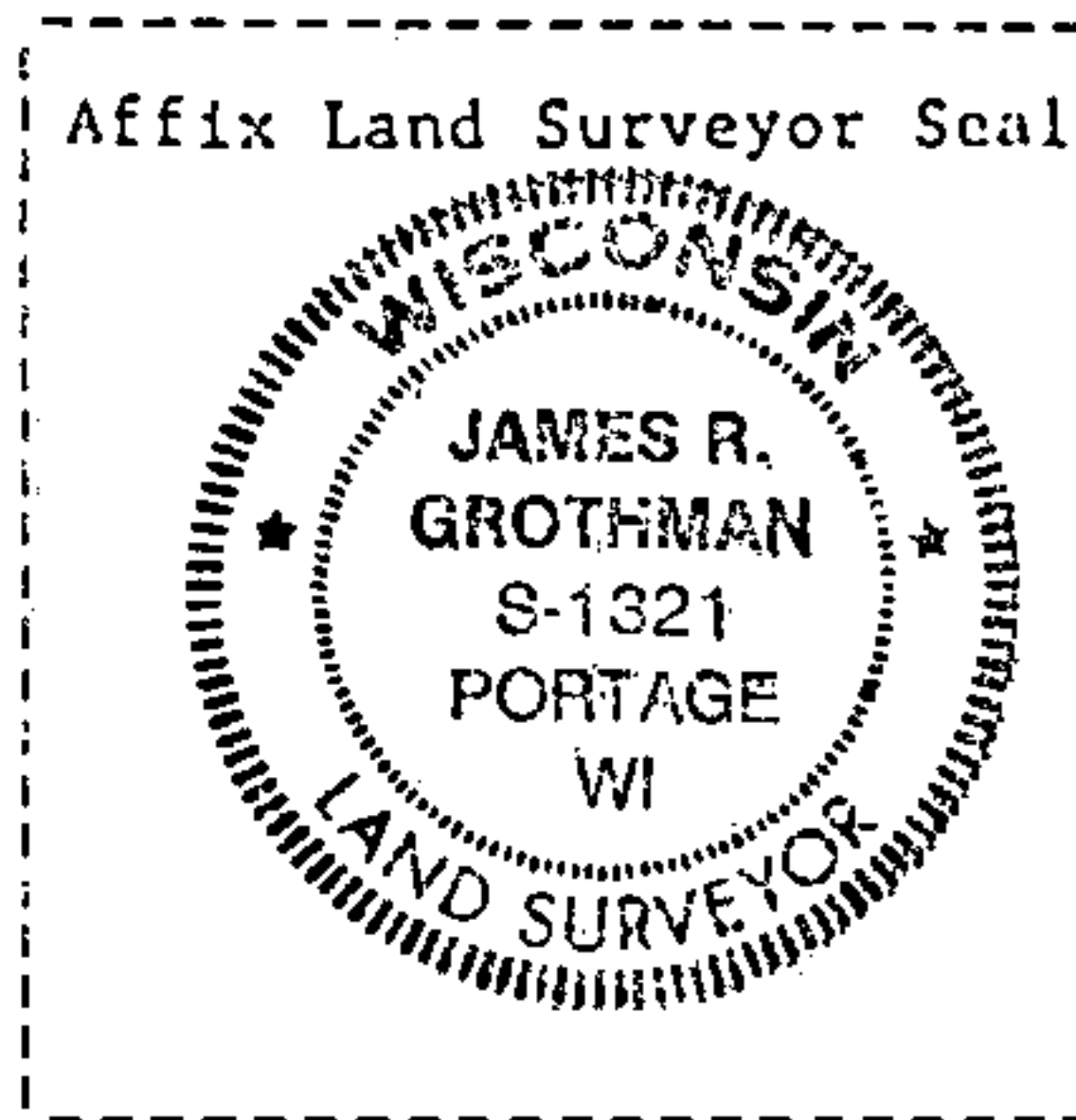
(f) Was the corner restored through acceptance of (1) an obliterated evidence location, or, (2) a found perpetuated location?

Obliterated corner position verified by existing bearing tree evidence.

(g&h) Was the corner reestablished through lost corner proportionate methods? If so, show the method, including the directions and distances to other public land survey corners used as evidence or used for proportioning in determining the corner location?



(i) JAMES R. GROTHMAN, Registered Land Surveyor No. 1321  
(Type or print name) certify that the corner location shown on this record was determined by me or under my direction and control and that this U.S. Public Land Survey Monument Record is correct and complete to the best of my knowledge and belief.



Signature

Date

Certificate ready for filing:

District Ranger

Date