

U.S. PUBLIC LAND SURVEY MONUMENT RECORD

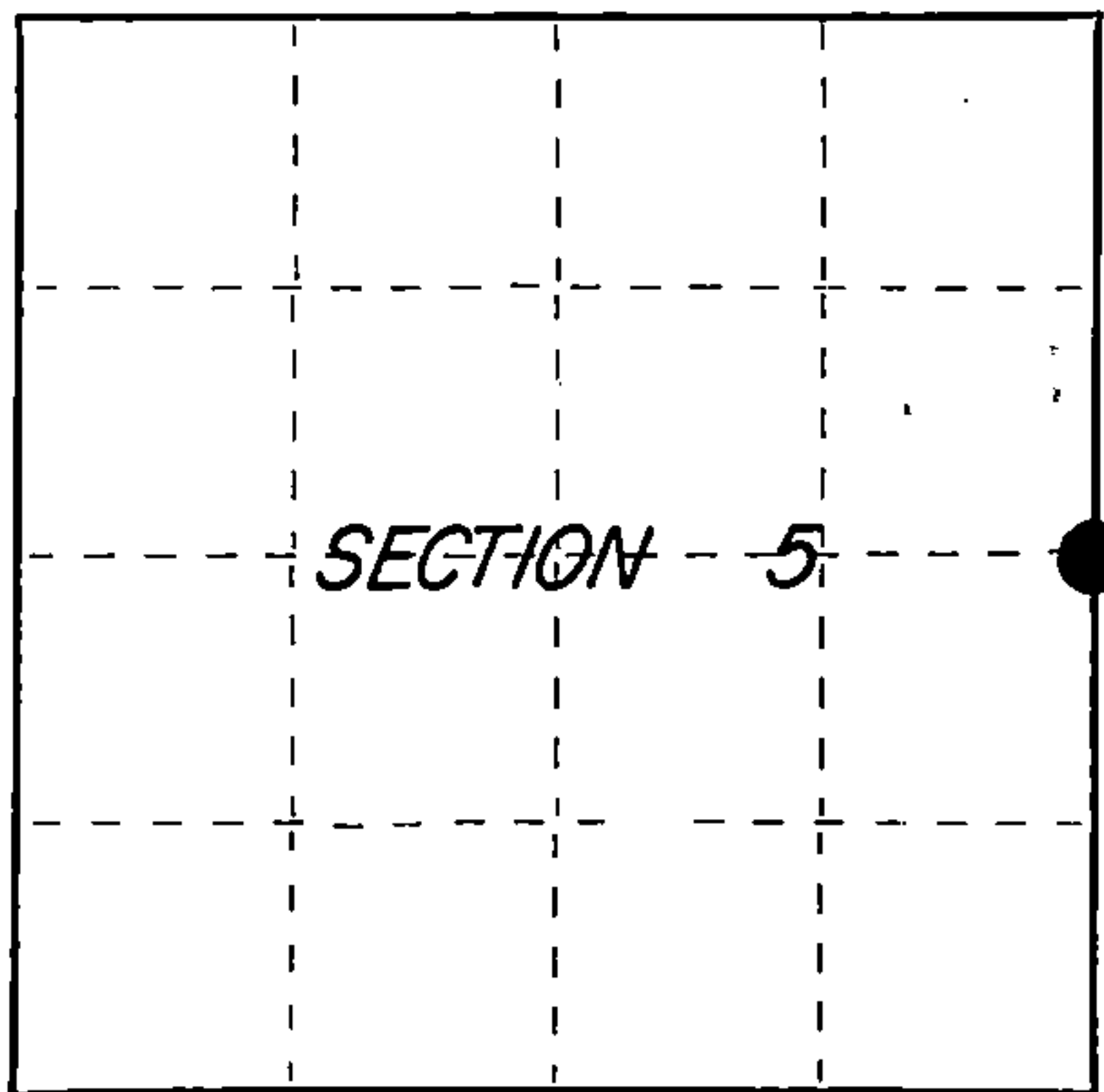
Index No. C-9

State of Wisconsin }
County of Columbia } ss.

I, JAMES R. GROTHMAN, do hereby certify that on the 10th day of October, 19 86, I found evidence of the East Quarter corner of Section 5 Township 38, North, Range 12 East, Fourth Principal Meridian, as described hereon; and that from this evidence I established a new monument and accessories as described hereon to perpetuate the original location of this corner.

Resident witnesses:

None



○ = Corner monument restored.

History of original corner establishment: Original survey by William E. Daugherty in 1859. Dependent resurvey by Wesson Cook, 1937. Set an iron post 3 feet long, 2 inch diameter, 27 inches in the ground with brass cap marked:

1/4	From which the following bear:
S5 1/4 S4	Spruce 4" S84-3/4°E 43 lks marked 1/4 S4 BT
1937	Spruce 3" S70-3/4°W 19 lks marked 1/4 S5 BT

Description of corner evidence found:
G.L.O. monument found as described. No remaining evidence of bearing trees.

Description of monument and accessories I established to perpetuate the original location of this corner.
Corner in good condition and + 2" under water on this date. Painted and posted the following bearing trees:

Spruce 2"	S41°W	19.93 feet
Spruce 2"	N24°E	10.48 feet
Spruce 2"	N62°E	19.55 feet
Spruce 2"	S50°E	10.37 feet

Set steel post 1 foot southerly of monument

Dated at Portage Wis., this 30 day of OCTOBER, 19 86

Signature James R. Grothman Title RLS Registration No. 1321
(County Surveyor, Registered Land Surveyor, or other duly authorized official)

Office of Register of Deeds, County of Forest, I hereby certify that the within instrument was filed in this office for record on the 24th day of February, 19 87 at 2:00 o'clock P. M.

Paul Aschenbrenner
(Register of Deeds)

By _____ Deputy

FORM NO. 985-A

H.C. Miller Company

Stock No. 26273

DOCUMENT NUMBER
132145

FOREST COUNTY

REGISTER'S OFFICE
Forest County, Wis.
Received for record this 24th day of February, 19 87 at 2:00 o'clock P. M. and recorded in Vol. 2-9 CORNER RESTORATIONS page 2-9
Paul Aschenbrenner
Register of Deeds

43812052000

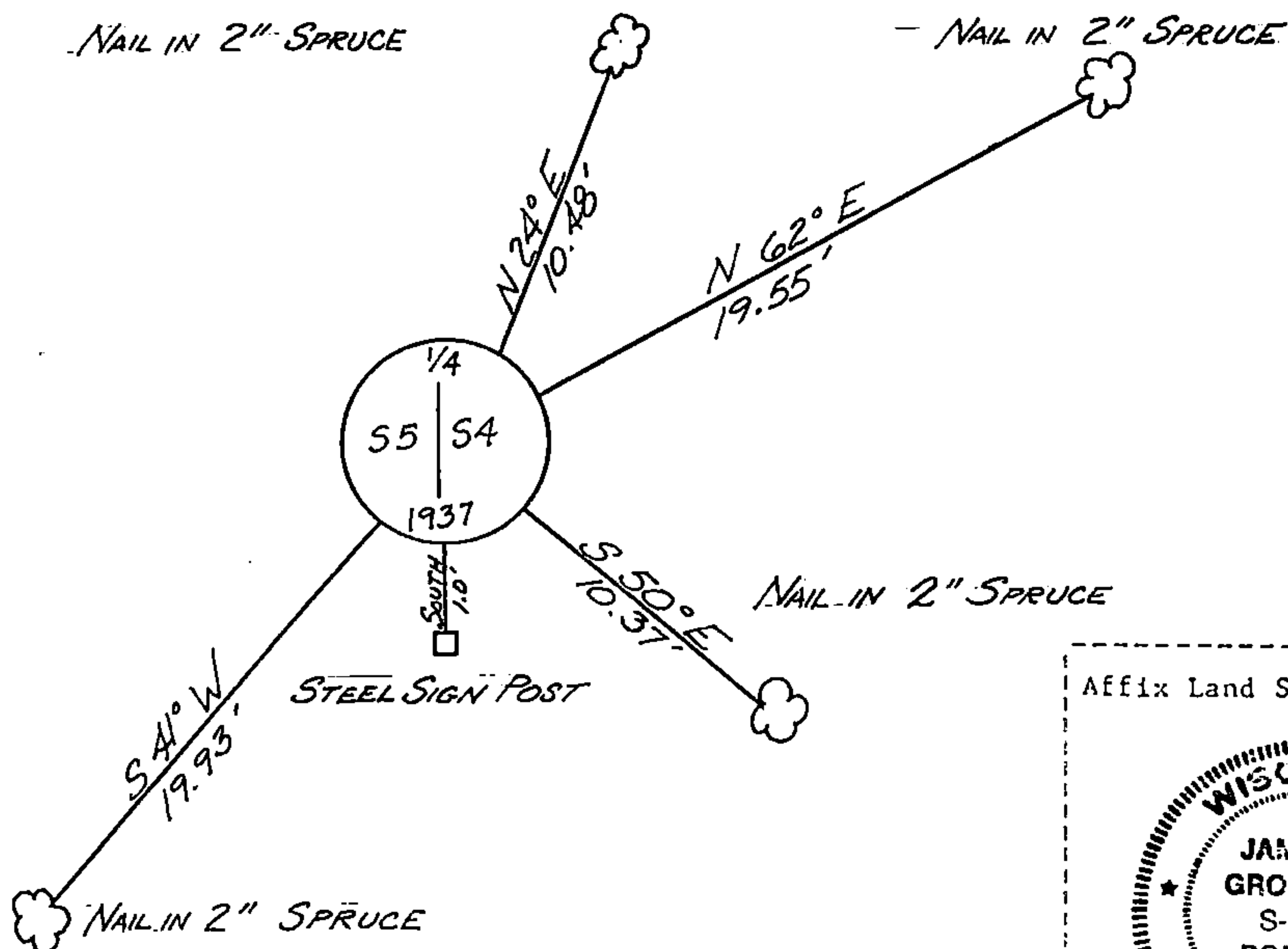
(e) Describe any material discrepancy between the location of the corner as restored or reestablished and the location of that corner as previously restored or reestablished by distance and direction. Show the discrepancy on the plan view drawing under (d), above. Show the distances between the corner as previously restored or reestablished and (1) the corner as restored or reestablished, and (2) to at least 2 of the witness monuments shown on the drawing in (d), above.

SEE G&H

(f) Was the corner restored through acceptance of (1) an obliterated evidence location, or, (2) a found perpetuated location?

Corner was restored through acceptance of a found perpetuated location.

(g&h) Was the corner reestablished through lost corner proportionate methods? If so, show the method, including the directions and distances to other public land survey corners used as evidence or used for proportioning in determining the corner location?



(i) I, JAMES R. GROTHMAN, Registered Land Surveyor No. 1321 (type or print name) certify that the corner location shown on this record was determined by me or under my direction and control and that this U.S. Public Land Survey Monument Record is correct and complete to the best of my knowledge and belief.

Signature

Date

Certificate ready for filing:

District Ranger

Date