

## U.S. PUBLIC LAND SURVEY MONUMENT RECORD

Index No. E-3

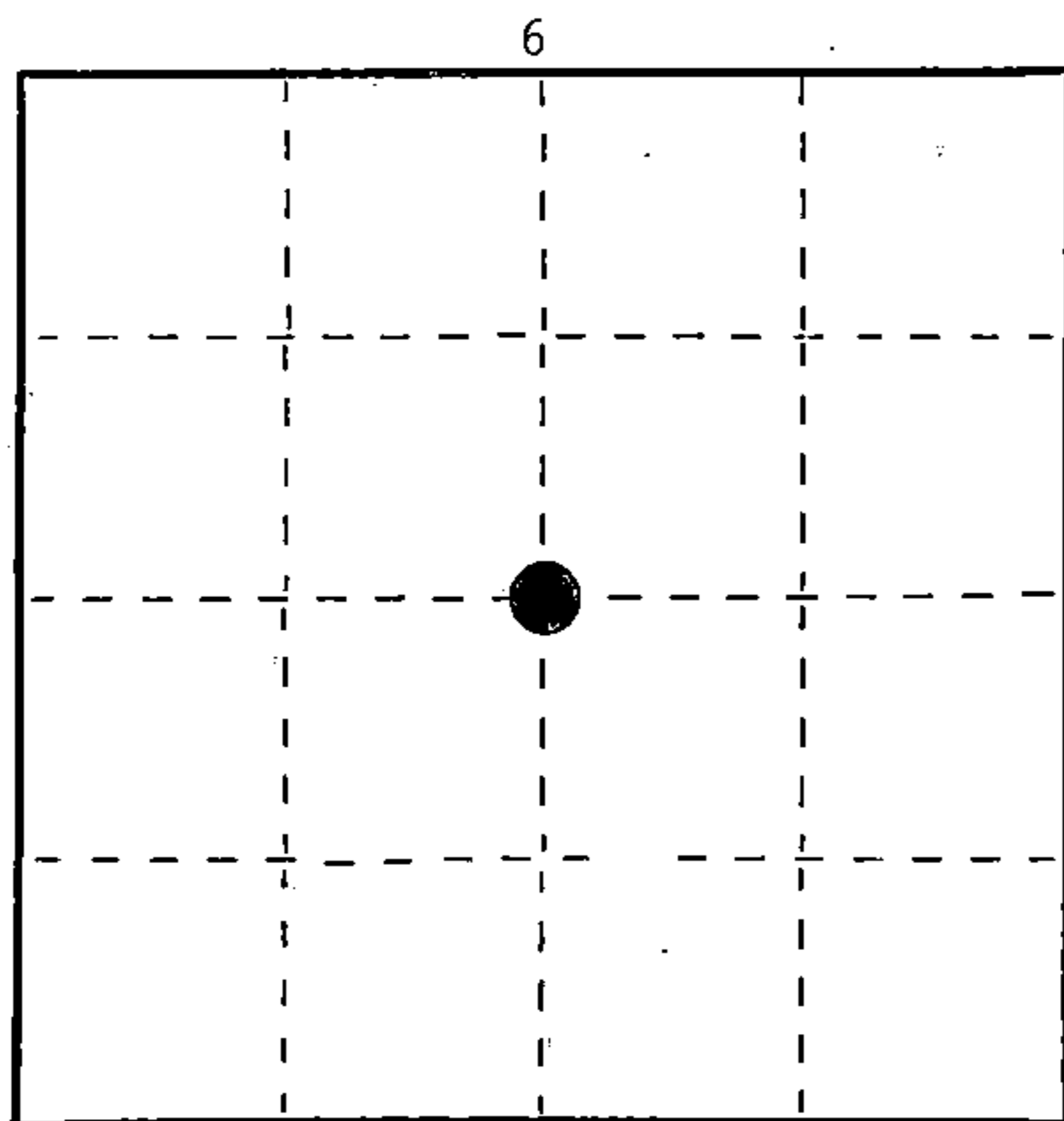
State of Wisconsin }  
County of Forest } ss.

I, Milo E. Stefan, do hereby  
certify that on the 28th day  
of October, 1988, I found  
evidence of the Quarter  
corner of Sections 6 and 7  
Township 38, North, Range  
12 East, Fourth Principal Meridian,  
as described hereon; and that from this evidence  
I established a new monument and accessories  
as described hereon to perpetuate the original  
location of this corner.

Resident witnesses:

Myron L. Smith

Jeffrey L. Kennedy



○ = Corner monument restored.

## History of original corner establishment:

1859 by Wm. Daugherty.

1937 G.L.O. declared corner as lost and restored it by lost methods. They set a  
6" x 24" concrete monument with two BTs:

15" Red Pine, S34°E, 27 links (17.82')

18" Red Pine, N 7 3/4°W, 72 links (47.52')

## Description of corner evidence found:

Concrete monument and both BTs in good condition.

26" Red Pine, S34°E, 17.46'

24" Red Pine, N 7 3/4°W, 47.37'

## Description of monument and accessories I established to perpetuate the original location of this corner.

We made two new BTs, set steel sign post, posted BT tags and painted area to Forest Service  
standard except 4" bands on BTs at request of property owner not to do so.

10" Red Pine, S65°E, 66.10'

10" White Pine, S77°W, 58.90'

6" Steel Sign Post, Northeast, .7'

Dated at CRandon, Wis., this 15th day of November, 1988

Signature Milo E. Stefan Title Land Surveyor Registration No. S-1558  
(County Surveyor, Registered Land Surveyor, or other duly authorized official)

Office of Register of Deeds, County of Forest, I hereby certify that the within  
instrument was filed in this office for record on the 7th day of March, 1989  
at 9:55 o'clock A.M.

Paul Aschenbrenner

(Register of Deeds)

By Sandra L. Hedder Deputy

FORM NO. 985-A

H.C. Miller Company  
Milwaukee, Wisconsin

Stock No. 26273

DOCUMENT NUMBER  
137004

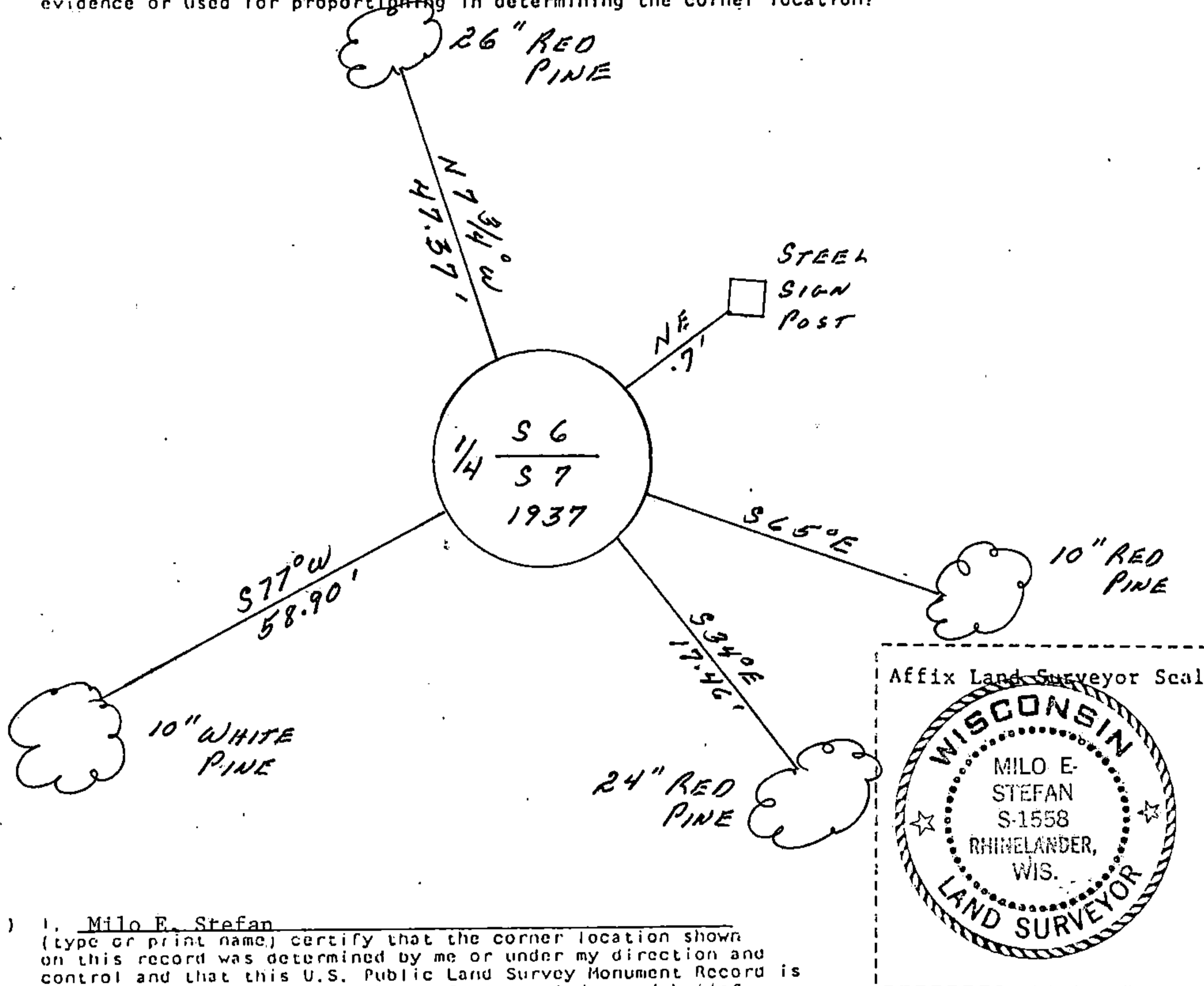
43812062020

(e) Describe any material discrepancy between the location of the corner as restored or reestablished and the location of that corner as previously restored or reestablished by distance and direction. Show the discrepancy on the plan view drawing under (d), above. Show the distances between the corner as previously restored or reestablished and (1) the corner as restored or reestablished, and (2) to at least 2 of the witness monuments shown on the drawing in (d), above.

(f) Was the corner restored through acceptance of (1) an obliterated evidence location, or, (2) a found perpetuated location?

a restored position by G.L.O. in 1937.

(g&h) Was the corner reestablished through lost corner proportionate methods? If so, show the method, including the directions and distances to other public land survey corners used as evidence or used for proportioning in determining the corner location?



(i) I, Milo E. Stefan  
 (type or print name) certify that the corner location shown on this record was determined by me or under my direction and control and that this U.S. Public Land Survey Monument Record is correct and complete to the best of my knowledge and belief.

Milo E. Stefan  
 Signature

11/2/88  
 Date

Certificate ready for filing:

Charles E. Jordan  
 District Ranger