

FILED ON:  
01/28/2025 02:33 PM  
CORTNEY BRITTEN CLEEREMAN  
REGISTER OF DEEDS  
FOREST COUNTY WI  
PAGES: 1  
INDEX#:

FOREST COUNTY SURVEY MONUMENT RECORD

NOTE: This form is intended and designed to fulfill all requirements of Wisconsin Administrative Code, Chapter A-E 7.08 U.S. Public Land Survey Monument Record (3) (a-1)

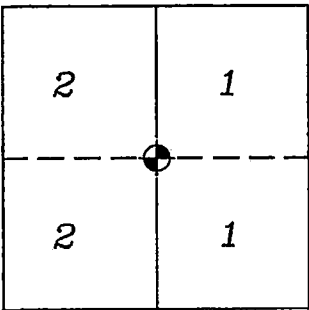
SECTION CORNER COMMON  
TO SECTIONS 1, 2  
TOWNSHIP: 38N  
RANGE: 13E  
TOWN OF ARGONNE

TYPE OF MONUMENT: RR SPIKE

WISCRS FOREST COUNTY  
NORTHING: 655204.19'  
EASTING: 857223.18'  
DATUM: NAD83 (2011)  
METHOD NETWORK RTK

FIELD WORK DATE: 10/16/2024  
COMPANY: PAYNE AND DOLAN

FOUND: ☒  
SET: ☐  
RESET: ☐  
RETIED: ☐



CORNER LOCATION  
INDICATED BY:



BASIS FOR MONUMENT LOCATION:  
(DESCRIBE METHOD OF SURVEY AND CORNER AUTHENTICATION)

HISTORY:  
In 1865, H. Nowlin and J. L. Nowlin set section corner post with the following BTs: Hemlock, 30" N.28°E., 12 links; Sugar 12", S.41°W., 26 links.

FOUND RR SPIKE AT CORNER LOCATION AND 4 OF THE 4 TIES. REFERENCED TIE SHEET FROM S-1107 DATED 01-03-95.

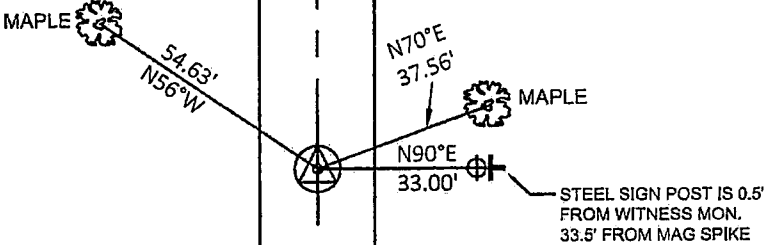
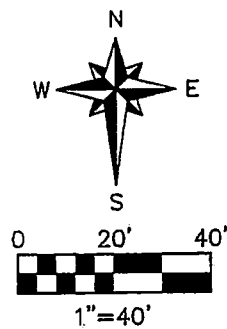
STH 55, REPAVED FALL 2024.  
RR SPIKE REMAINS IN PLACE.  
SET MAG SPIKE AT GRADE ON NEWLY PAVED ROAD DIRECTLY ABOVE THE RR SPIKE, DERIVED FROM RTK COORDINATES.

I accept this momument in good faith as a FOUND PERPETUATED LOCATION of the corner and was not determined through lost-corner-proportionate methods.

I, Rebecca A. DesRochers, Professional Land Surveyor No. 3170, hereby cerify that the corner location on this record was determined by me or under my direction and control, and that this U.S. Public Land Survey Monument Record is correct and complete to best of my knowledge, and belief.

Rebecca A. DesRochers 01/21/2025  
PROFESSIONAL LAND SURVEYOR DATED

TIE SKETCH



- STEEL FENCE POST, FOUND
- COUNTY WITNESS, ALUM. MON., FOUND
- WITNESS TREE, FOUND
- SURVEY MON. MAG SPIKE, SET

NOTE:  
ALL WITNESS BEARINGS ARE  
REFERENCED TO MAGNETIC NORTH