

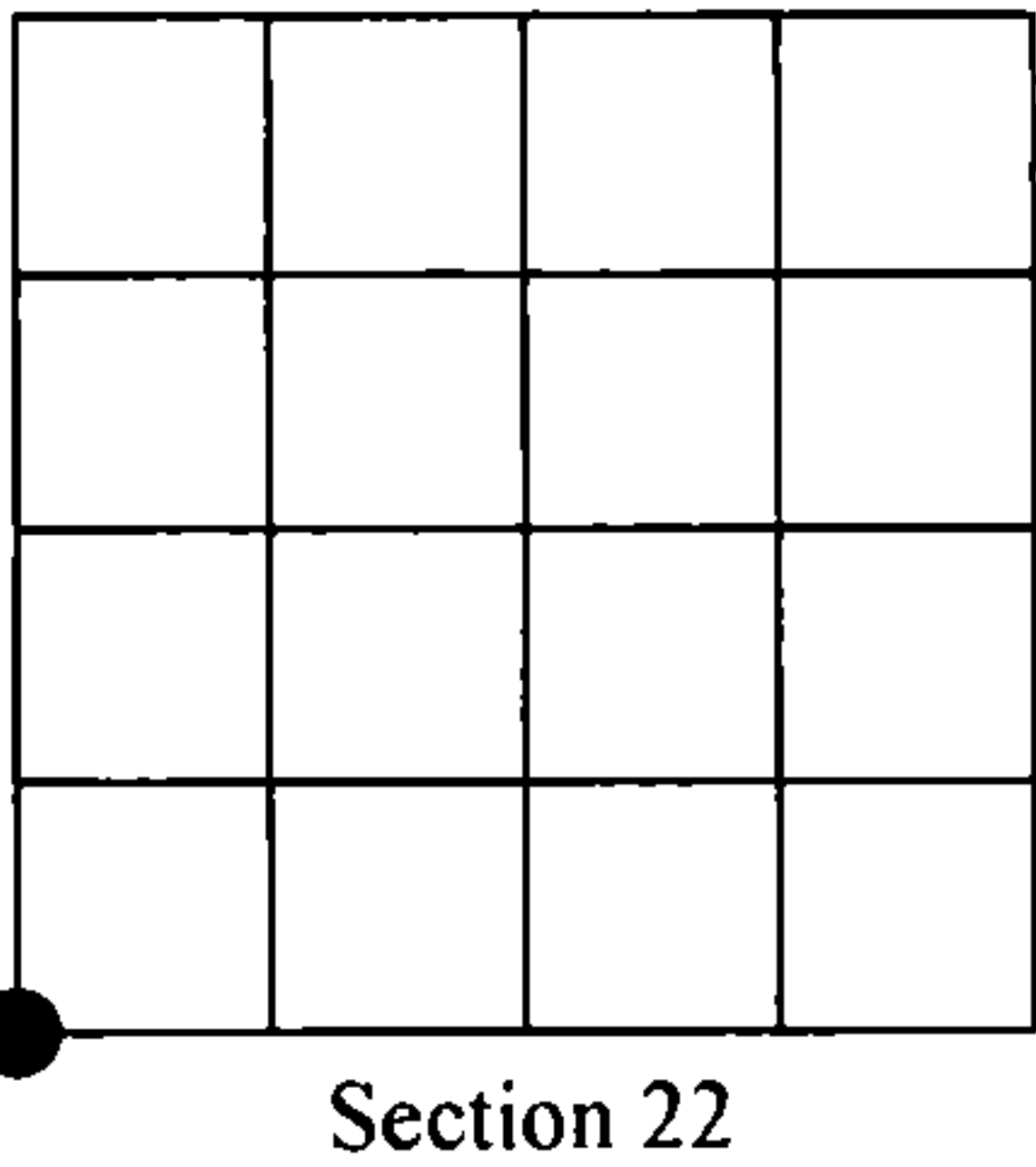
Document Number
210298

REGISTER'S OFFICE
Forest County, Wis.
Received for record this 24th day
of October A.D., 2012 at
11:00 o'clock A.M. and recorded
in Vol. Corner Restoration
page A-13
Cheryl M. Britton, Deputy
Register of Deeds

U.S. PUBLIC LAND SURVEY MONUMENT RECORD

NOTE: This form is intended and designed to fulfill all requirements of Wisconsin Administrative Code, Chapter A-E 7.08 U.S. Public Land Survey Monument Record (3)(a)(b)(c)(d)(e)(f)(g)(h)(i). An additional sheet may be added if necessary to conform with said requirements.

(a) Corner location: Township 38 North
Range 13 East
Town of Argonne
Forest County, Wisconsin



(b)(f)(g)(h) Description of monument found at this corner and if it was accepted, state all evidence (material, testimonial, occupational, plats, records, other monuments) used as a basis for accepting. If not accepted or if nothing was found, state evidence used as basis for establishing location. If reestablished through lost corner proportionate methods, indicate all monuments, distances and directions used to establish. Indicate type of monument found or set and sign post.

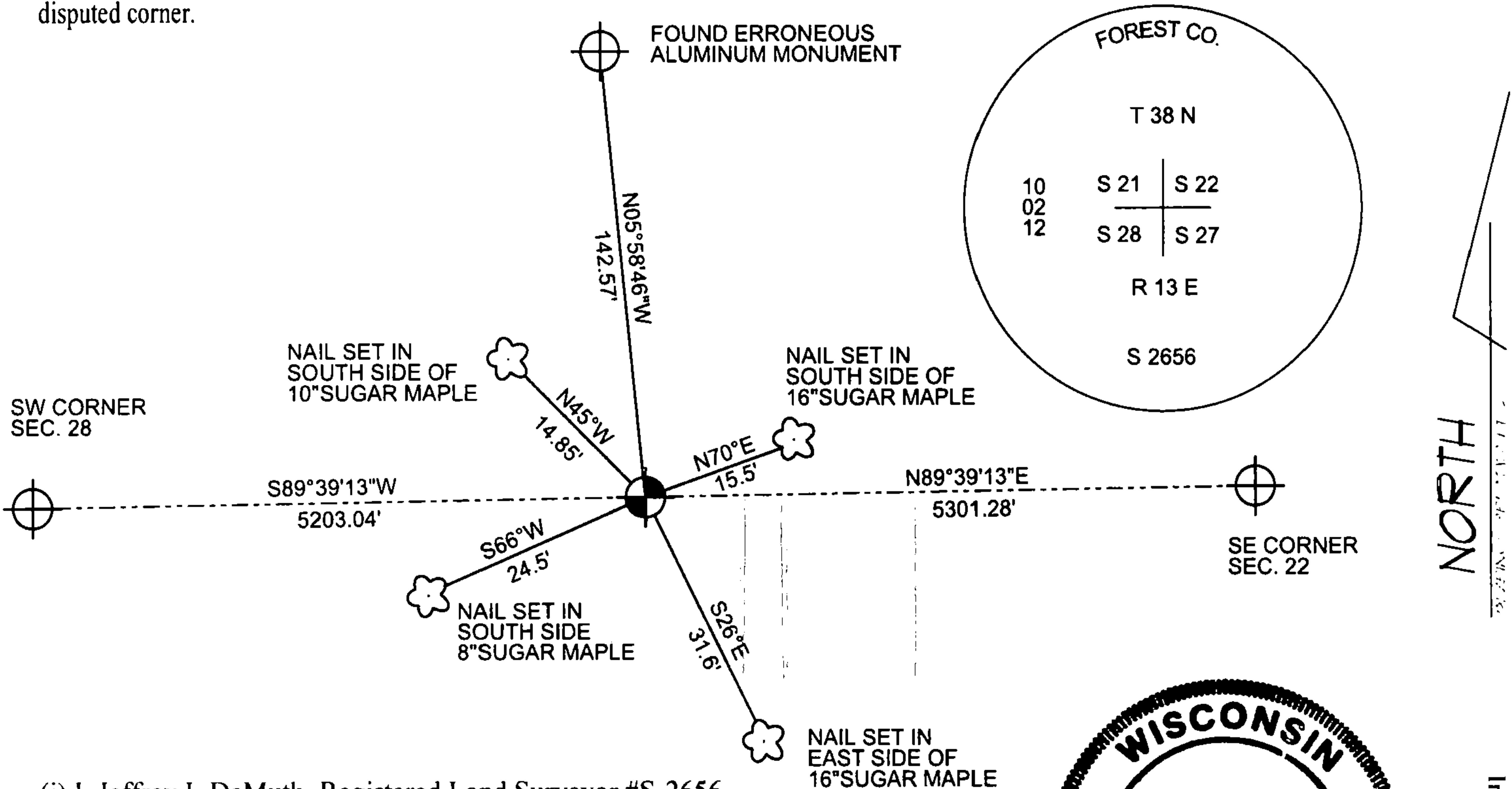
AUGUST 1865 - JAMES NOWLIN SET POST COMMON TO SECTIONS 21, 22, 27 AND 28

AUGUST 22, 2012 - I FIND AND DISAGREE WITH AN ALUMINUM MONUMENT, STAMPED TO IDENTIFY CORNER, AND BEARING WILLIAM B. COCHRANE'S SURVEYOR NUMBER, AS WELL AS BEARING TREES. I FOUND NO RECORD OF THIS MONUMENT.

BECAUSE THE FOUND MONUMENT DISAGREES WITH THE TOPOGRAPHIC CALLS FROM THE ORIGINAL GOVERNMENT NOTES, I DECLARE THIS CORNER TO BE OBLITERATED, AND ESTABLISH IT'S POSITION ON A LINE BETWEEN THE SOUTHWEST CORNER OF SECTION 21, AND THE SOUTHEAST CORNER OF SECTION 22, AND AT THE MEASUREMENTS CALLED OUT IN THE ORIGINAL GOVERNMENT NOTES TO SWAMP EDGES TO THE NORTH AND EAST.

10/02/2012 - I SET A 2 1/4" DIAMETER X 30" LONG FOREST COUNTY ALUMINUM MONUMENT STAMPED TO IDENTIFY CORNER, AND WITNESSES AS SHOWN BELOW.

(c)(d)(e) Plan view of corner with ties to at least 4 witness monuments. If in disagreement with previously established corner, show the distances between the two corners and also indicate the ties to the disputed corner.



(i) I, Jeffrey L DeMuth, Registered Land Surveyor #S-2656, hereby certify that the corner location on this record was determined by me or under my direction and control and that this U.S. Public Land Survey Monument Record is correct and complete to the best of my knowledge and belief.

Signature *[Signature]* Date 10/16/2012



Index No.
R-13