

CERTIFIED LAND CORNER RESTORATION

State of Wisconsin }
County of Forest } ss.

I Milo E. Stefan, do hereby certify that on the 25th day of May, 19 83, I found evidence of the Northwest corner of Section 34 Township 38 North Range 13 East, Fourth Principal Meridian, as described hereon; and that from this evidence I established a new monument and accessories as described hereon to perpetuate the original location of this corner:

Description of original monument and accessories and subsequent restorations:

Surveyed in 1865 by H. Nowlin and J. L. Nowlin
80.00 chains, set wood post
Cedar, 12", N82°E, 30 lks., 19.80 feet
Cedar, 12", N42°W, 20 lks., 13.20 feet

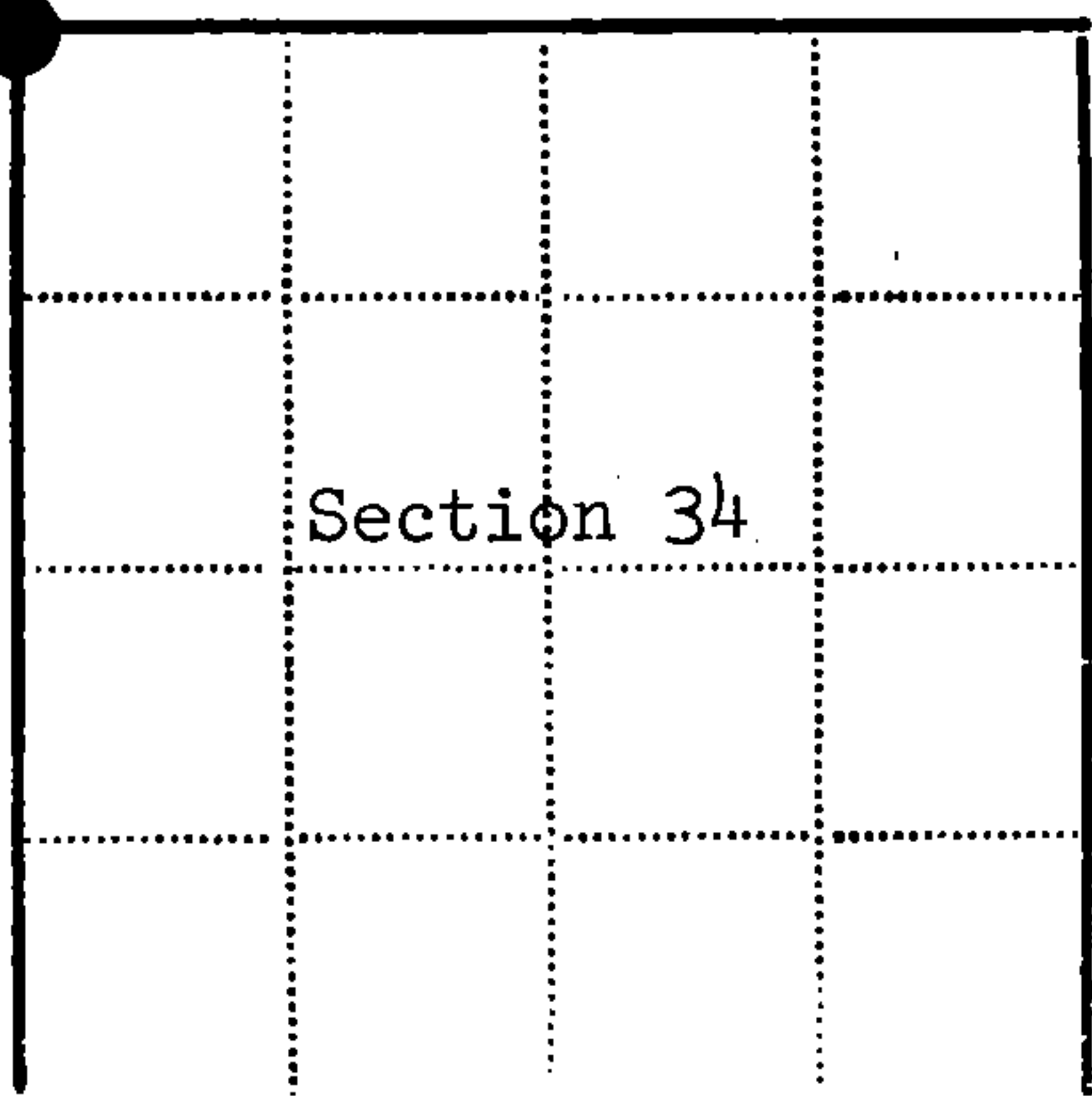
Description of corner evidence found:

Cedar stump, N82°E, 19.60 feet
Cedar stump and log, N42°W, 13.20 feet
Local Evidence: Post hole, S42°E, 13.20 feet
Witness testimony given by Manley Albrecht--owner of land in 1946. He states that John Hammes had found the scribed section corner in 1946 or 1947.

Description of monument and accessories I established to perpetuate the location of this corner:

Placed a 2" x 36" Berntsen aluminum monument with tablet stamped as follows:
T38N, R13E, S27, S28, S33, S34, 1983, RLS-1558
From which the following bear:
Black Spruce, 5", S77°E, 10.34 feet
Black Spruce, 6", S38°W, 28.26 feet
Black Spruce, 5", N81°W, 8.03 feet
Black Spruce, 4", N25°W, 6.00 feet
Steel Sign Post, NW, 1.50 feet

DOCUMENT NO.
124238



● - Corner monument restored
□ -

Resident witnesses.....

Dated at Rhinelanders Wisconsin, this day of 19 83.

Signature Milo E. Stefan Title Land Surveyor
(County Surveyor, Registered Land Surveyor, or other duly authorized official)

Surveyors Registration No. RLS-1558

Office of Register of Deeds County of Forest

I hereby certify that the within instrument was filed in this office for record on the 15th day of September 19 83, and was filed in Book No. Page No. of County Records.

Signature Eugene Stutzman Title Register of Deeds

Township 38 North, Range 13 East, Section 34, Index No. V-13, Page No. 11

43813280000

V13

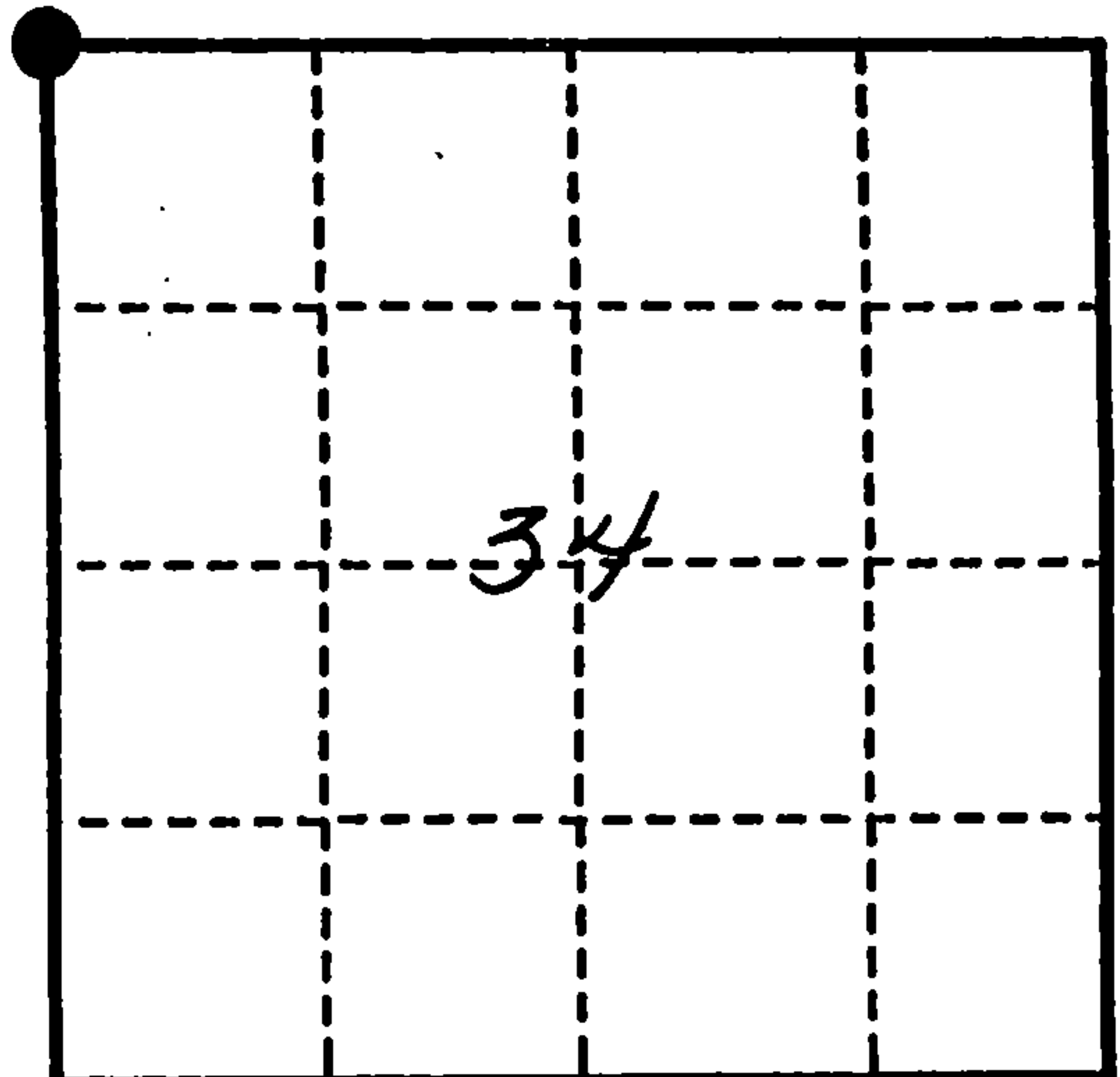
U. S. PUBLIC LAND SURVEY MONUMENT RECORD

INSTRUCTIONS:

This record shall show the location of the corner and shall include all of the following nine elements (a through i).

- (a) Identify the corner by reference to the U.S. public land survey system.
 O = Corner monument restored.

Section Corner to Sections 27, 28, 33 & 34,
 T.38N., R.13E., 4th P.M.



- (b) Describe any record evidence, monument evidence, occupational evidence, testimonial evidence or any other material evidence you considered, and whether the monument was found or placed.

Found monument and two BTs in good condition. Two BTs down.

We made two new BTs:

Black Spruce, 6", N.8°E., 24.75'.

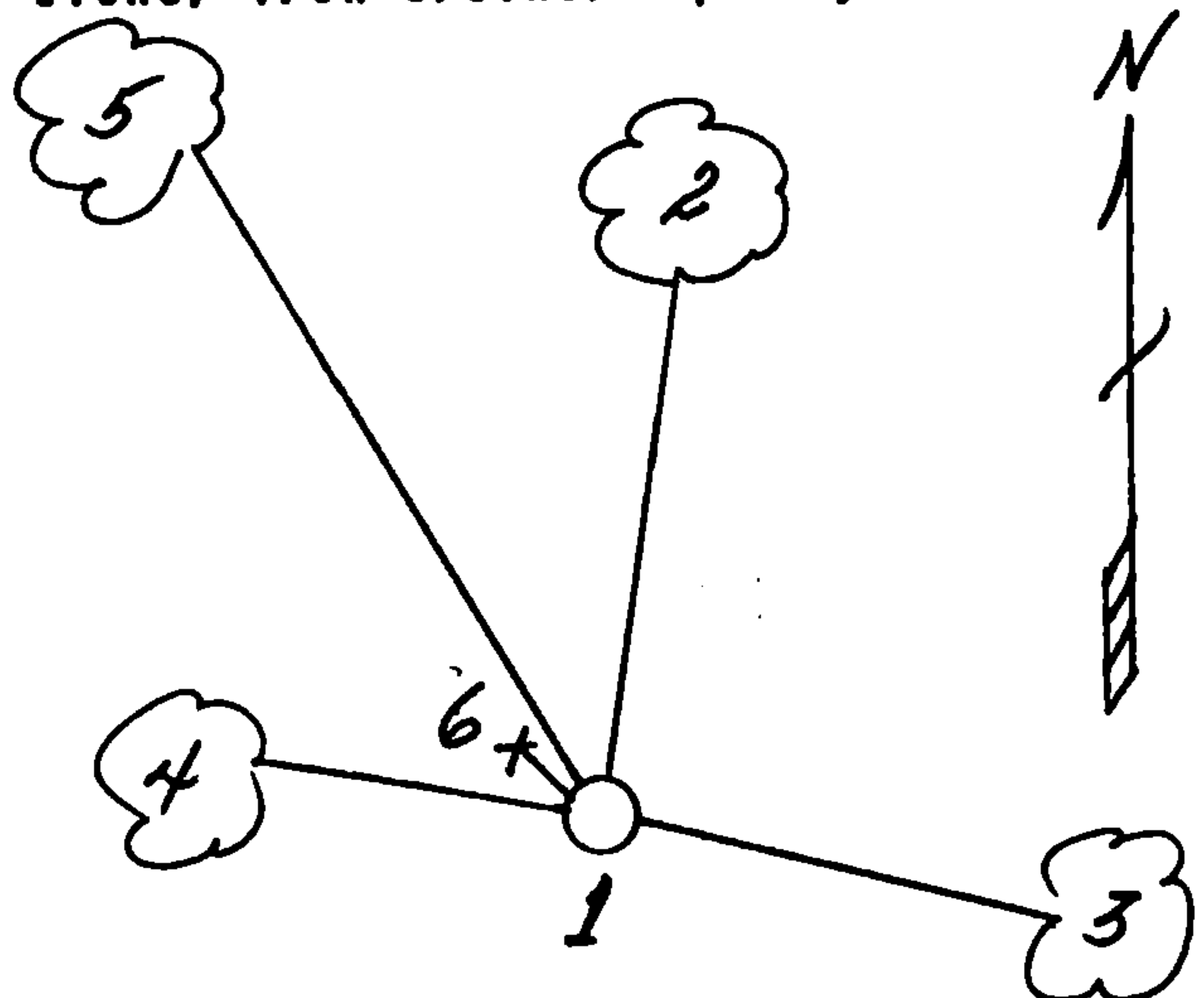
Black Spruce, 6", N.32°W., 31.66'.

This Corner was restored by myself in 1983.

- (c) In the plan view drawing below, provide reference ties to at least 4 witness monuments, or, if the location is within a municipality, to at least 2 witness monuments. (witness monuments shall be made of concrete, natural stone, iron or other equally durable material.)

- (d) Show a plan view drawing depicting the relevant monuments and reference ties which is sufficient in detail to enable accurate relocation of the corner monument if the corner monument is disturbed. Indicate north.

1. 2" Aluminum monument.
2. Black Spruce, 6", N.8°E., 24.75'.
3. Black Spruce, 5", S.77°E., 10.34'.
4. Black Spruce, 5", N.81°W., 8.03'.
5. Black Spruce, 6", N.32°W., 31.66'.
6. Steel sign post, Northwest, 1.50'.



REGISTER'S OFFICE
 Forest County, Wis.

Received for record this 9th day

of March A.D. 1993 at

2:15 o'clock A.M. and recorded

in Vol. 38-13 Casee Restoration

page V-13

Dea Ch. H. Deputy
 Register of Deeds

(a) Describe any material discrepancy between the location of the corner as restored or reestablished and the location of that corner as previously restored or reestablished by distance and direction. Show the discrepancy on the plan view drawing under (d). above. Show the distances between the corner as previously restored or reestablished and (1) the corner as restored or reestablished, and (2) to at least 2 of the witness monuments shown on the drawing in (d), above.

N/A

(f) Was the corner restored through acceptance of (1) an obliterated evidence location, or, (2) a found perpetuated location?

(2)

(g & h) Was the corner reestablished through lost corner proportionate methods? If so, show the method, including the directions and distances to other public land survey corners used as evidence or used for proportioning in determining the corner location?

N/A

(1) I, Milo E. Stefan

(type or print name) certify that the corner location shown on this record was determined by me or under my direction and control and that this U.S. Public Land Survey Monument Record is correct and complete to the best of my knowledge and belief.

Milo E. Stefan

Signature

November 20, 1992

Date

CERTIFICATE READY FOR FILING:

Dale R. Covey
Acting District Ranger



Stock No. 26273
DOCUMENT NUMBER
145346

U.S. PUBLIC LAND SURVEY MONUMENT RECORD

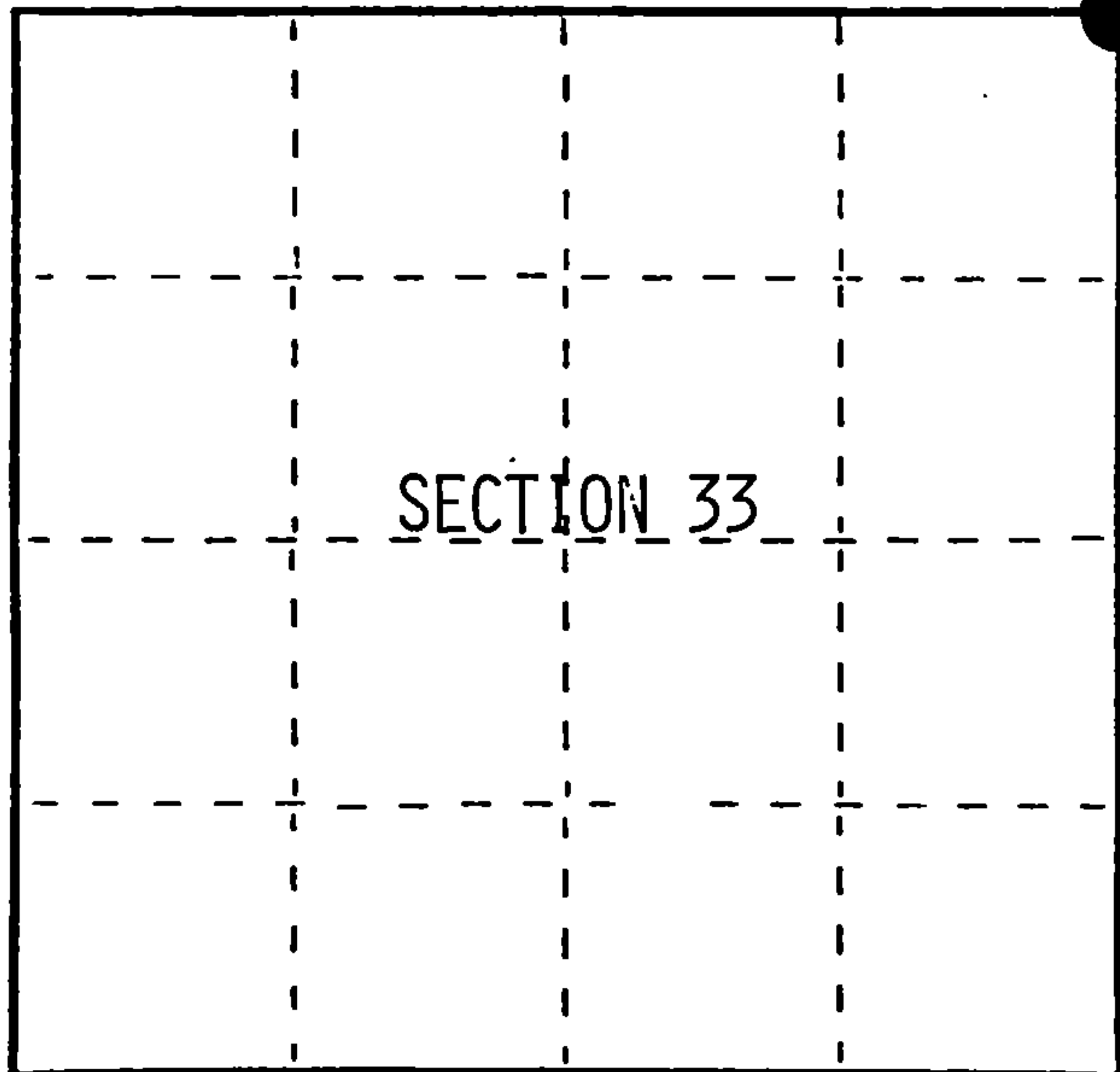
Index No. V-13

State of Wisconsin }
County of Forest } ss.

I, William B. Cochran, do hereby certify that on the 1st day of June, 1990, I found evidence of the Northeast Section corner of Section 33 Township 38 North, Range 13 East, Fourth Principal Meridian, as described hereon; and that from this evidence I established a new monument and accessories as described hereon to perpetuate the original location of this corner.

Resident witnesses:

Manley Albrecht



○ = Corner monument restored.

History of original corner establishment:

Original Government Survey in 1865 by H. & J.L. Nowlin.

In 1983, Milo Stefan, a Land Surveyor with the Forest Service found original bearing tree evidence and a post hole marking the corner position. After locating evidence, Milo Stefan asked Manley Albrecht, a local resident, to accompany him to the corner area. Mr. Albrecht accompanied and testified that the evidence found was the same as what John Hammes found in 1946, although at that time there was visible scribing. In the post hole, Stefan set a 2"x36" Bersten Aluminum Monument with a tablet stamped; T38N R13E, S27, S28, S33, S34, 1983, R.L.S. 1558. From which the following bear;

Description of corner evidence found:	B. Spruce	5"	S77°E	10.34 feet
	B. Spruce	6"	S38°W	28.26 feet
	B. Spruce	5"	N81°W	8.03 feet
	B. Spruce	4"	N25°W	6.00 feet
	Steel Sign Post		West	1.50 feet

Found monument as described above, in place, from which the following bear;

	B. Spruce	5"	S77°E	10.34 feet
	B. Spruce	6"	N81°W	8.03 feet
	B. Spruce (down)	6"	S38°W	28.26 feet
	Steel Sign Post		West	1.50 feet
Description of monument and accessories I established to perpetuate the original location of this corner.				

Blazed and scribed a new bearing tree;

B. Spruce	5"	N10°E	24.85 feet
-----------	----	-------	------------

Re-painted existing bearing trees.

Dated at Hiles, Wis., this 19th day of February, 1992

Signature William B. Cochran, Title Land Surveyor, Registration No. S-1107
(County Surveyor, Registered Land Surveyor, or other duly authorized official)

Office of Register of Deeds, County of Forest, I hereby certify that the within instrument was filed in this office for record on the 31st day of August, 1992 at 10:15 o'clock A.M.

Paul Achenbrenner
(Register of Deeds)

By Deputy

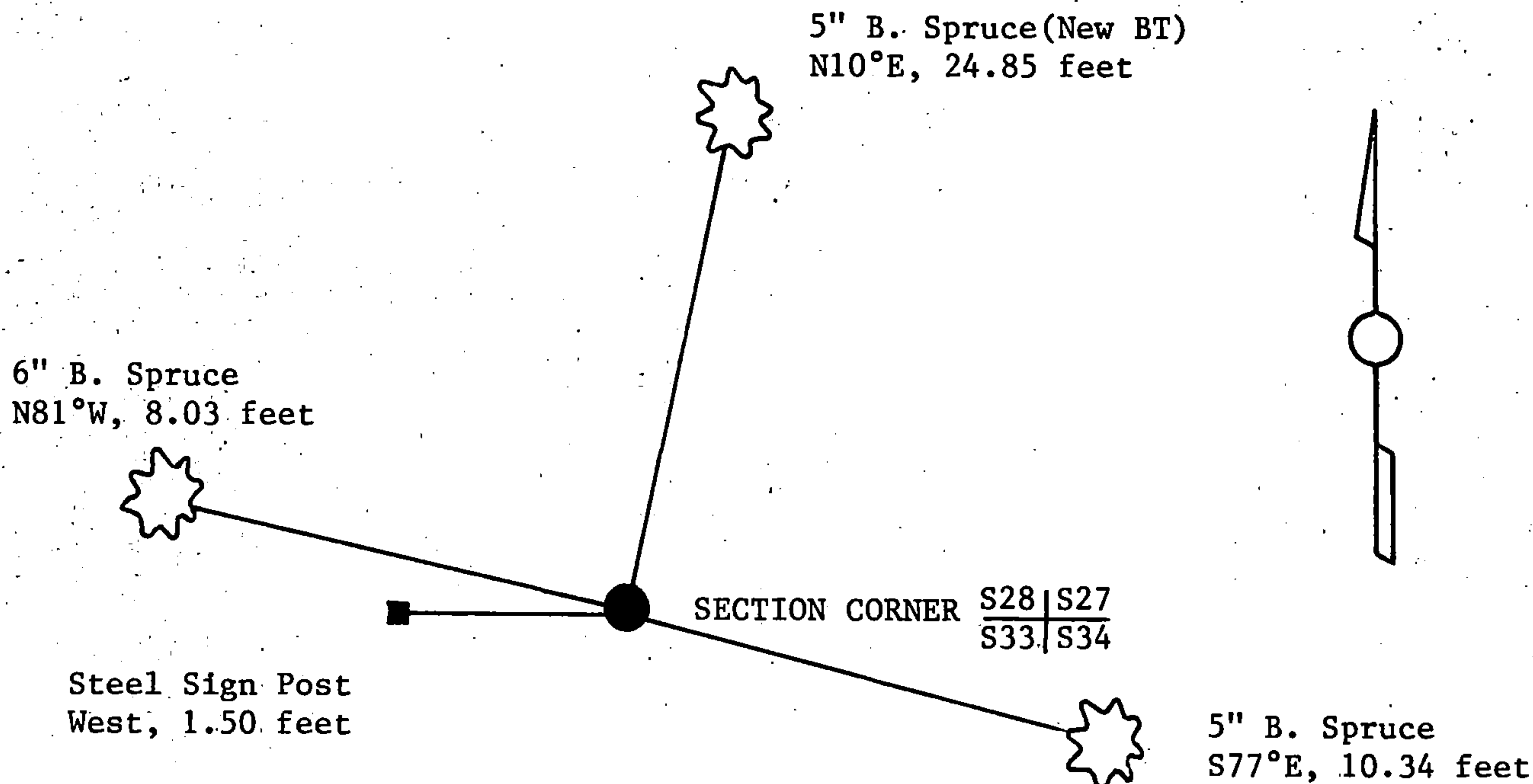
43813280000

(e) Describe any material discrepancy between the location of the corner as restored or reestablished and the location of that corner as previously restored or reestablished by distance and direction. Show the discrepancy on the plan view drawing under (d), above. Show the distances between the corner as previously restored or reestablished and (1) the corner as restored or reestablished, and (2) to at least 2 of the witness monuments shown on the drawing in (d), above.

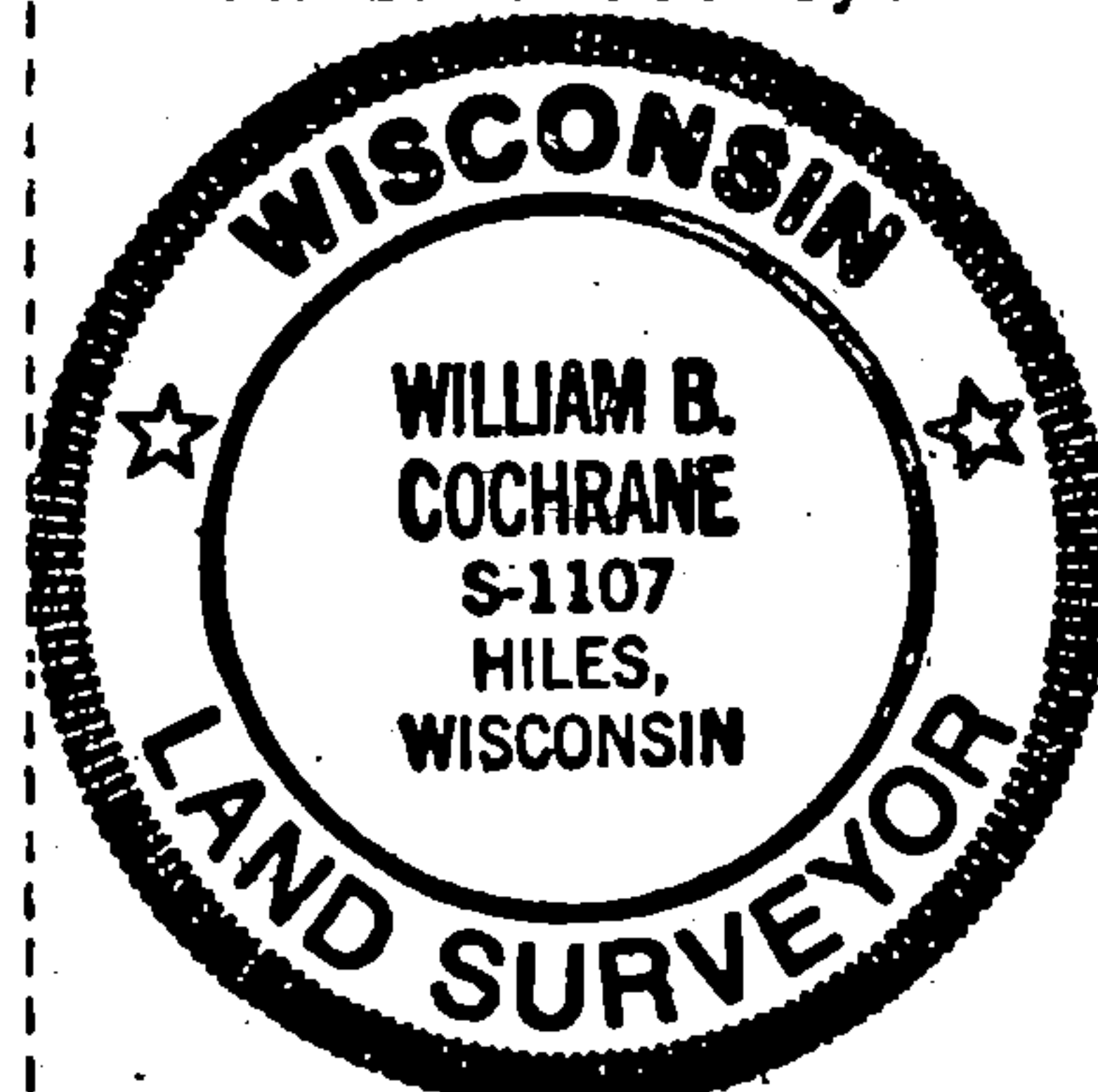
(f) Was the corner restored through acceptance of (1) an obliterated evidence location, or, (2) a found perpetuated location?

Restored through acceptance of a found perpetuated location.

(g&h) Was the corner reestablished through lost corner proportionate methods? If so, show the method, including the directions and distances to other public land survey corners used as evidence or used for proportioning in determining the corner location?



Affix Land Surveyor Seal



(i) I, William B. Cochrane
(type or print name) certify that the corner location shown on this record was determined by me or under my direction and control and that this U.S. Public Land Survey Monument Record is correct and complete to the best of my knowledge and belief.

William B. Cochrane Feb 19, 1992
Signature Date

Survey requested by: Sue Vap 4/2/92
District Ranger Date