

Stock No. 26273

160519

U.S. PUBLIC LAND SURVEY MONUMENT RECORD

Index No. E-11

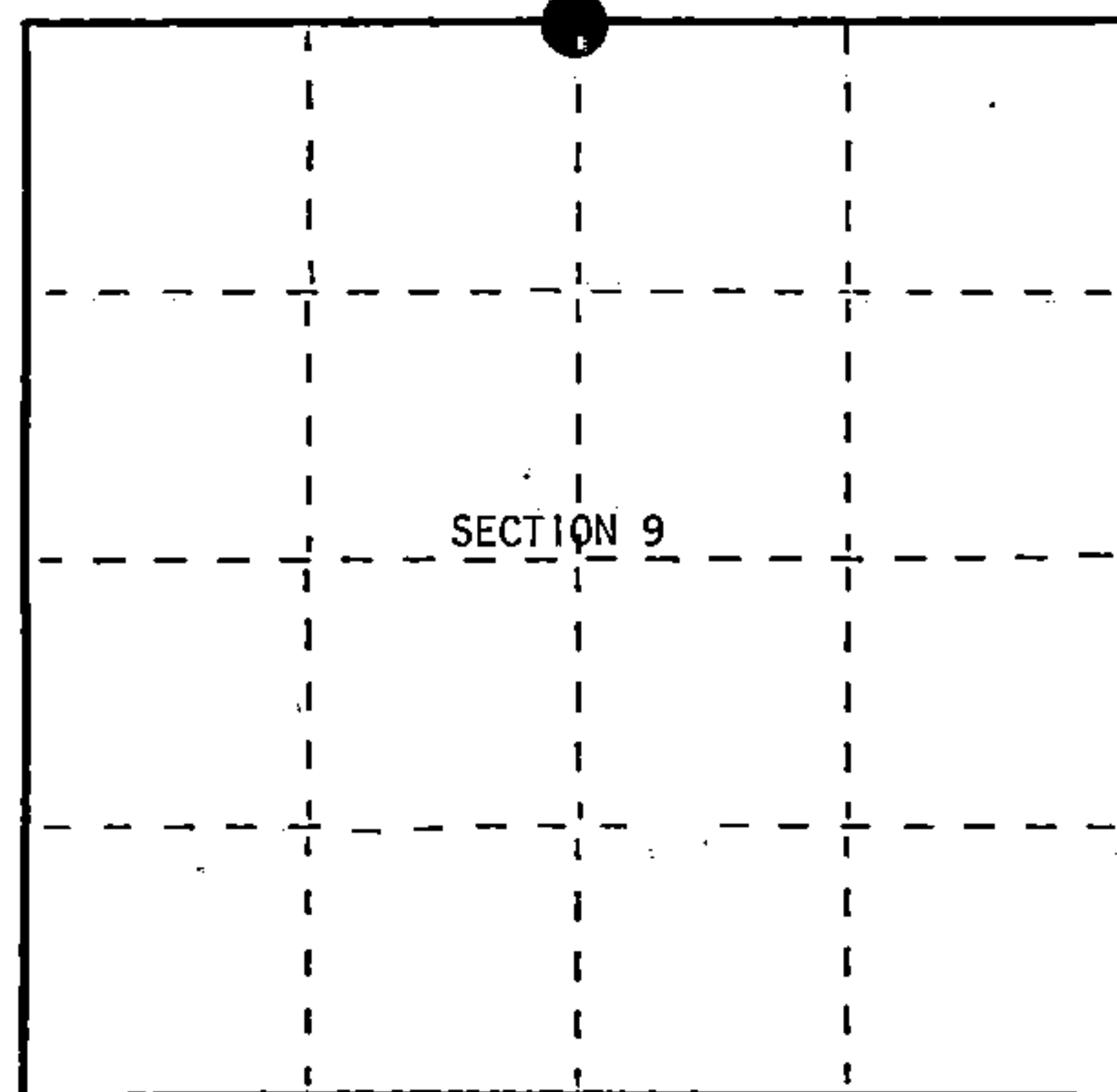
State of Wisconsin }
County of Forest } ss.

I, James H. Moore, do hereby
certify that on the 12th day
of June, 1996, I found
evidence of the North Quarter
corner of Section 9
Township 38, North, Range
14 East, Fourth Principal Meridian,
as described hereon; and that from this evidence
I established a new monument and accessories
as described hereon to perpetuate the original
location of this corner.

Resident witnesses:

Stuart Peterson

Steve Applekamp



○ = Corner monument restored.

History of original corner establishment:

Original government survey in 1865 by James L. Nowlin. West corrected between Section 4 and 9,
40.30 chains, set ¼ post, original bearing trees:

Elm	6"	N9°E	15 lks
Sugar	15"	S51°W	19 lks

1913 Melindy - west from northeast corner of Section 9, 41.97 3/4 chains, 89 lks, south to ¼ corner

Description of corner evidence found:

No original corner evidence found. From single proportion location, where I found no original evidence, I chained west 80' and south 54' to retrace Melindy's 1913 corner position, where I found a moss covered mound of stones and a 16" Hemlock with overgrown chest blazes in 4 cardinal directions N15°W 13.0' from mound of stones. I accepted the mound of stones as the best available evidence for the corner position.

Description of monument and accessories I established to perpetuate the original location of this corner.

In the center of the mound of stones, I set a 2½" x 36" aluminum pipe monument with aluminum cap stamped: T38N, R14E, ¼ cor., S4, S9, 1996, S-1641. Blazed and scribed the following bearing trees:

Sugar	8"	East	39.72 feet
Sugar	4"	S33°E	19.18 feet
Sugar	6"	S62°W	25.15 feet
Sugar	9"	N12°W	26.51 feet
Steel Sign Post	North		0.81 feet

Dated at Hiles, Wis., this 6th day of January, 1997.

Signature James H. Moore Title Land Surveyor Registration No. S-1641
(County Surveyor, Registered Land Surveyor, or other duly authorized official)

Office of Register of Deeds, County of Forest I hereby certify that the within
instrument was filed in this office for record on the 17th day of December, 1997
at 9:27 o'clock A M.

(Register of Deeds)

By Paul T. Lindsey Deputy

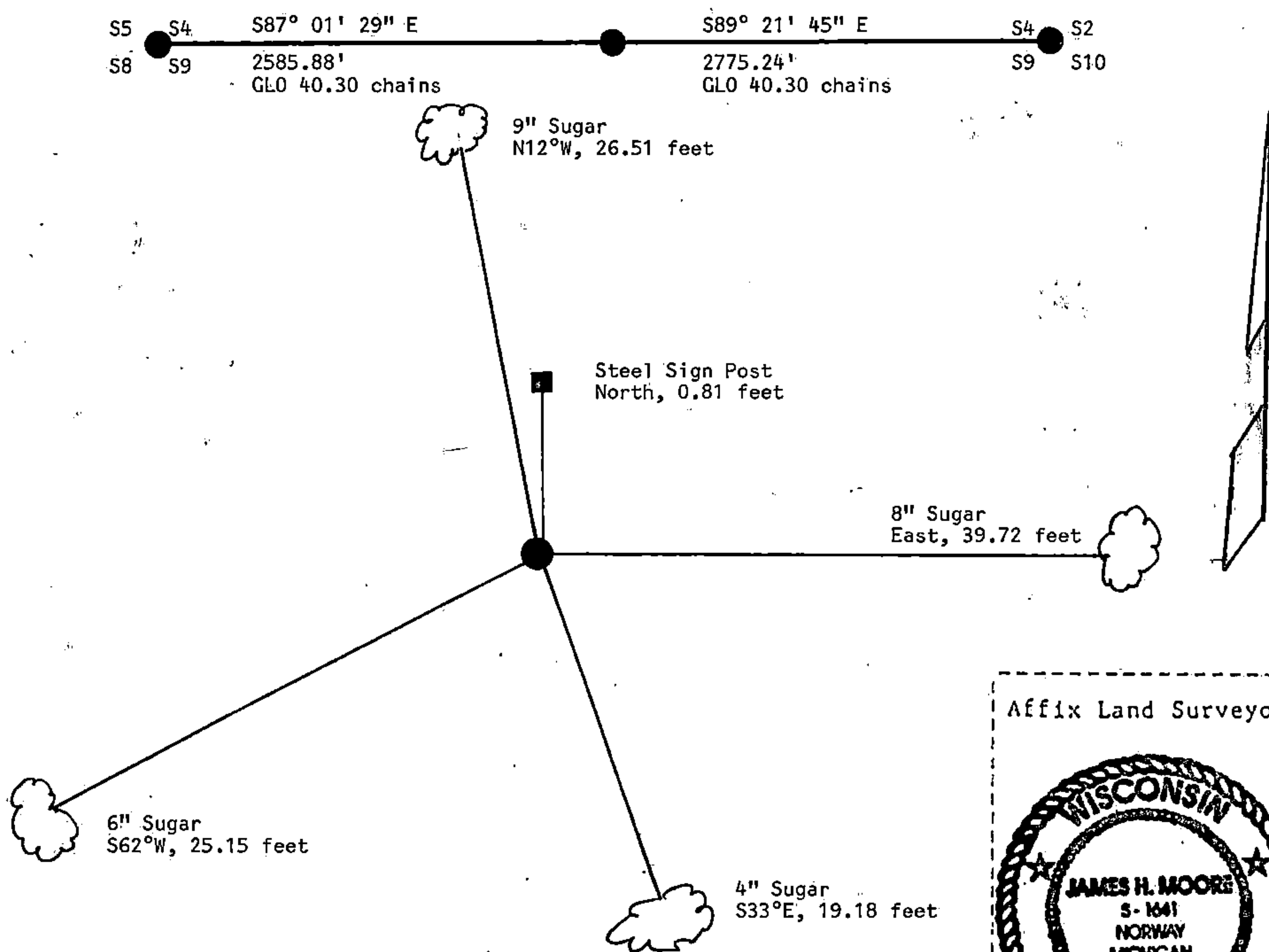
43814040020

(e) Describe any material discrepancy between the location of the corner as restored or reestablished and the location of that corner as previously restored or reestablished by distance and direction. Show the discrepancy on the plan view drawing under (d), above. Show the distances between the corner as previously restored or reestablished and (1) the corner as restored or reestablished, and (2) to at least 2 of the witness monuments shown on the drawing in (d), above.

See Sketch Below.

(f) Was the corner restored through acceptance of (1) an obliterated evidence location, or, (2) a found perpetuated location?

(g&h) Was the corner reestablished through lost corner proportionate methods? If so, show the method, including the directions and distances to other public land survey corners used as evidence or used for proportioning in determining the corner location?



(i) James H. Moore
(Type or print name) certify that the corner location shown on this record was determined by me or under my direction and control and that this U.S. Public Land Survey Monument Record is correct and complete to the best of my knowledge and belief.

Signature

January 6, 1997

Date

Affix Land Surveyor Seal

