

CERTIFIED LAND CORNER RESTORATION

State of Wisconsin

County of Forest

ss.

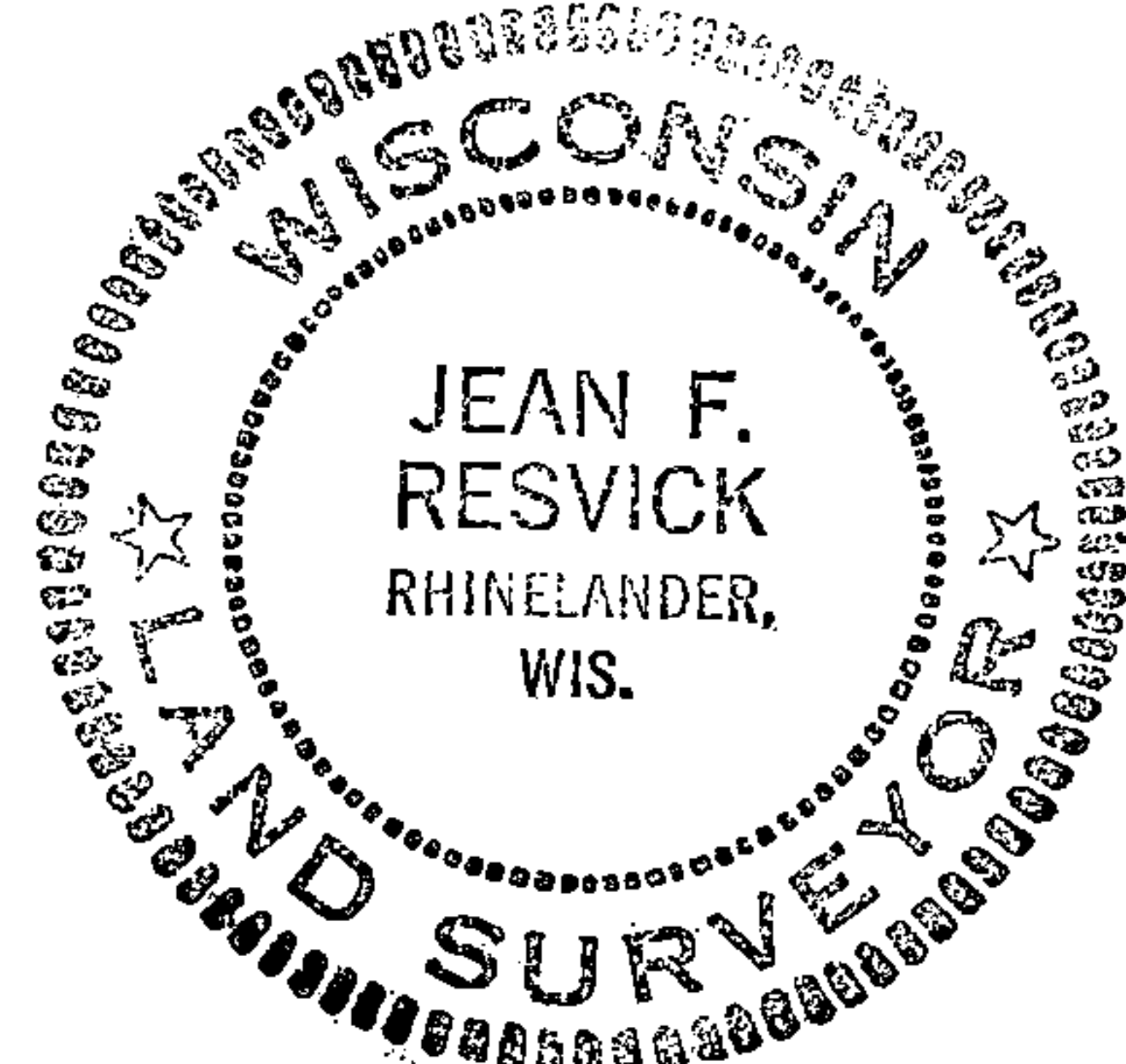
I Jean F. Resvick, do hereby certify that on the 2nd day of June, 1967, I found evidence of the Northeast section corner of Section 34 Township 38 North, Range 14 East, Fourth Principal Meridian, as described hereon; and that from this evidence I established a new monument and accessories as described hereon to perpetuate the original location of this corner:

Description of original monument and accessories and subsequent restorations:

Original survey in 1865 by James L. Nowlin.
80.0 chains north between Sections 34 and 35.
Set wood post for corner of Sections 26, 27, 34 and 35.
Spruce 12, N5°W, 18 links.
Spruce 10, N44°E, 20 links.

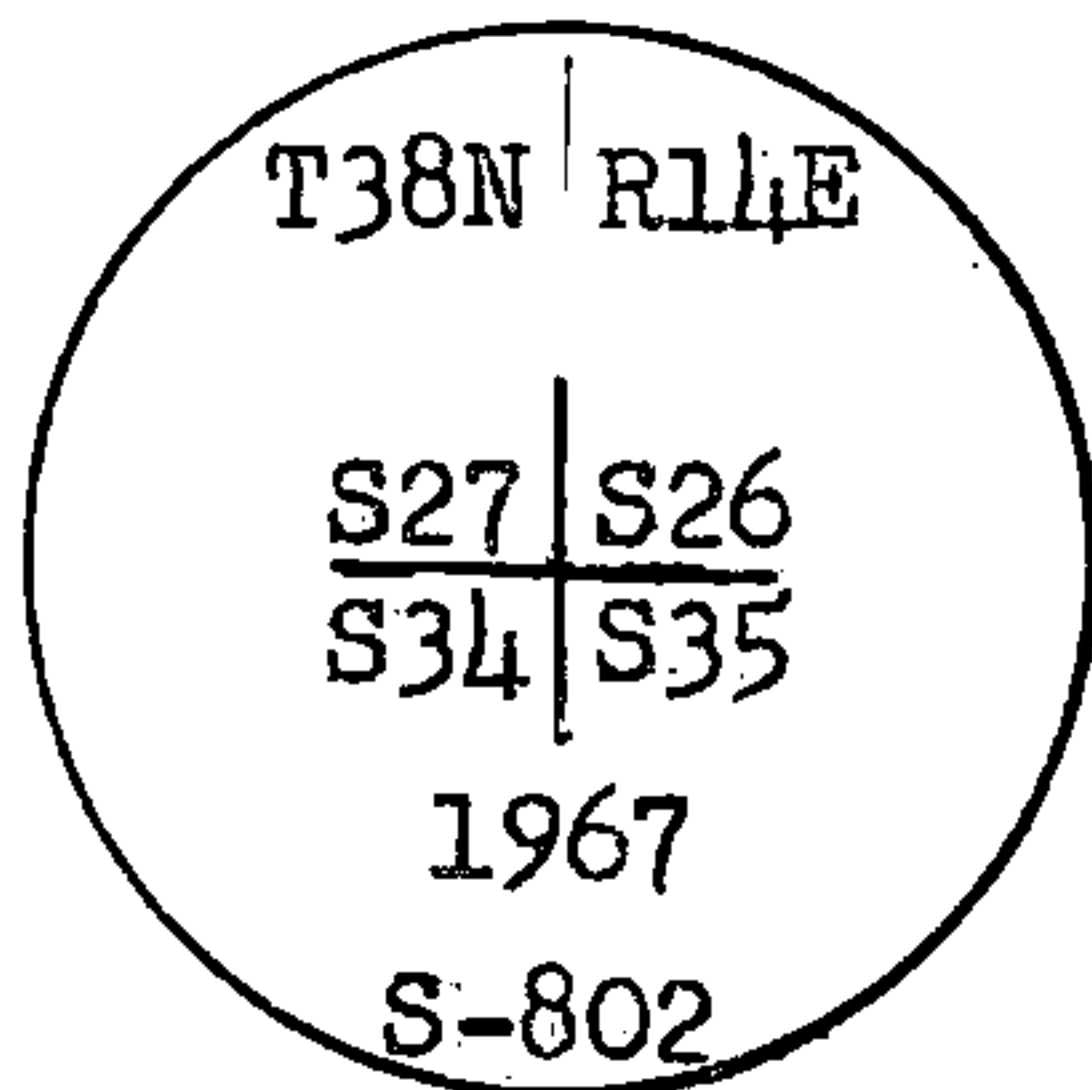
Description of corner evidence found:

3 x 3 post with iron rod driven in ground 0.6 ft. south of post.
On the east side of post, found point of old cedar post.
Spruce stump bears N5°W, 11.88 feet from post point.
Spruce stump bears N44°E, 13.20 feet from post point.



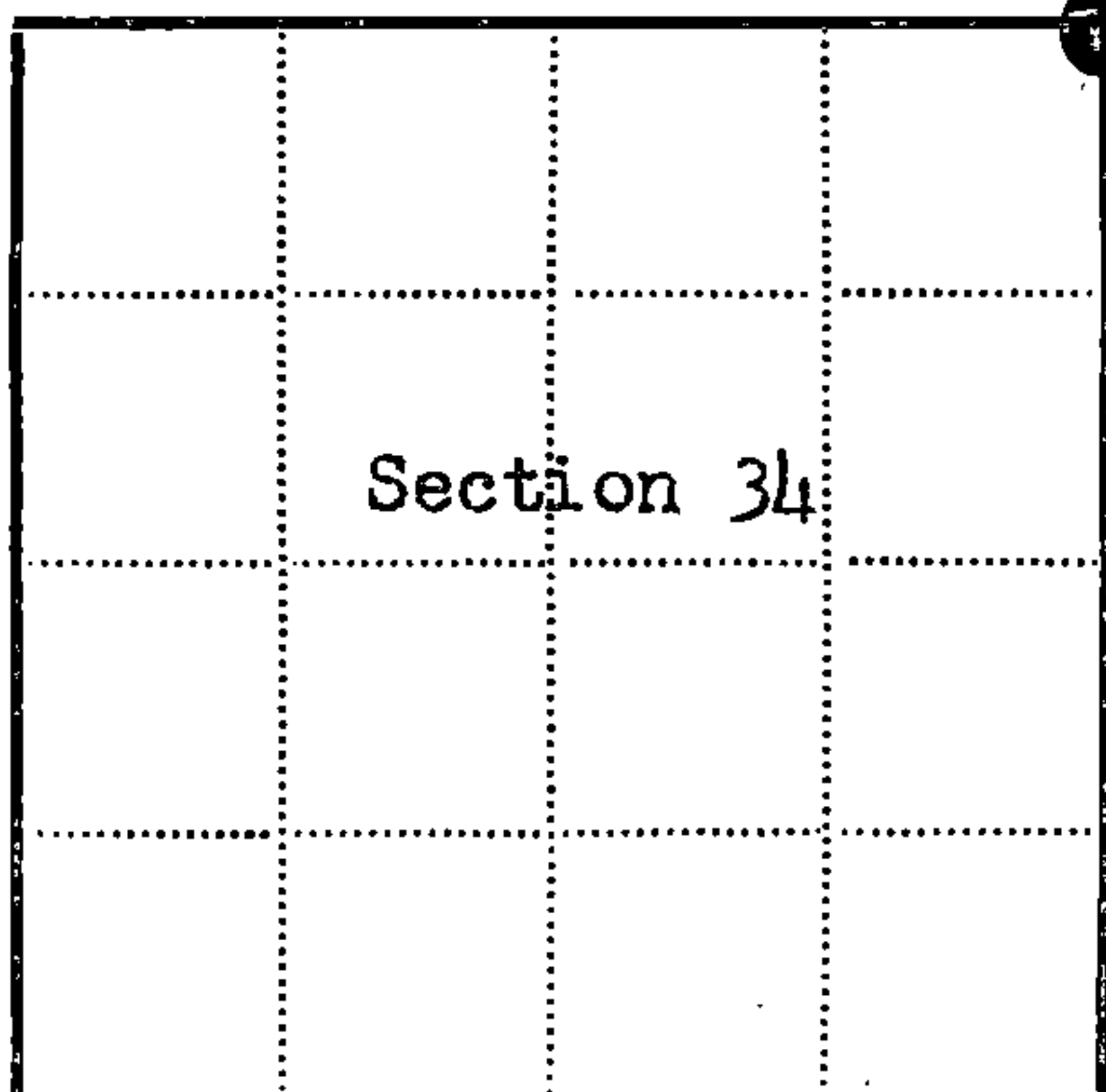
Description of monument and accessories I established to perpetuate the original location of this corner:

Replace point of cedar post with 2 inch inside diameter, galvanized wrought iron pipe, 5 feet long, filled with concrete, with brass cap marked:



from which the following blazed and scribed new bearing trees bear:

Cedar 6", N40°E, 23.29 ft. or 35.29 lks.
Cedar 5", S74°E, 20.95 ft. or 31.74 lks.
Cedar 5", S66°W, 12.90 ft. or 19.55 lks.
Cedar 3", N63°W, 9.20 ft. or 13.94 lks.



● = Corner monument restored

□ =

Resident witnesses.....

Dated at Rhineland Wisconsin, this 21st day of July, 1967.

Signature Jean F. Resvick Title Cadastral Surveyor
(County Surveyor, Registered Land Surveyor, or other duly authorized official)

Surveyors Registration No. S-802 DOC. NO. 94225

Office of Register of Deeds County of Forest

I hereby certify that the within instrument was filed in this office for record on the 27th day of February, 1968, and was filed in Book No. I Page No. of County Records.

Signature Eugene Staszny Title Register of Deeds

Township 38 North, Range 14 East, Section 34, Index No. V-17, Page No.

43814270000

27A

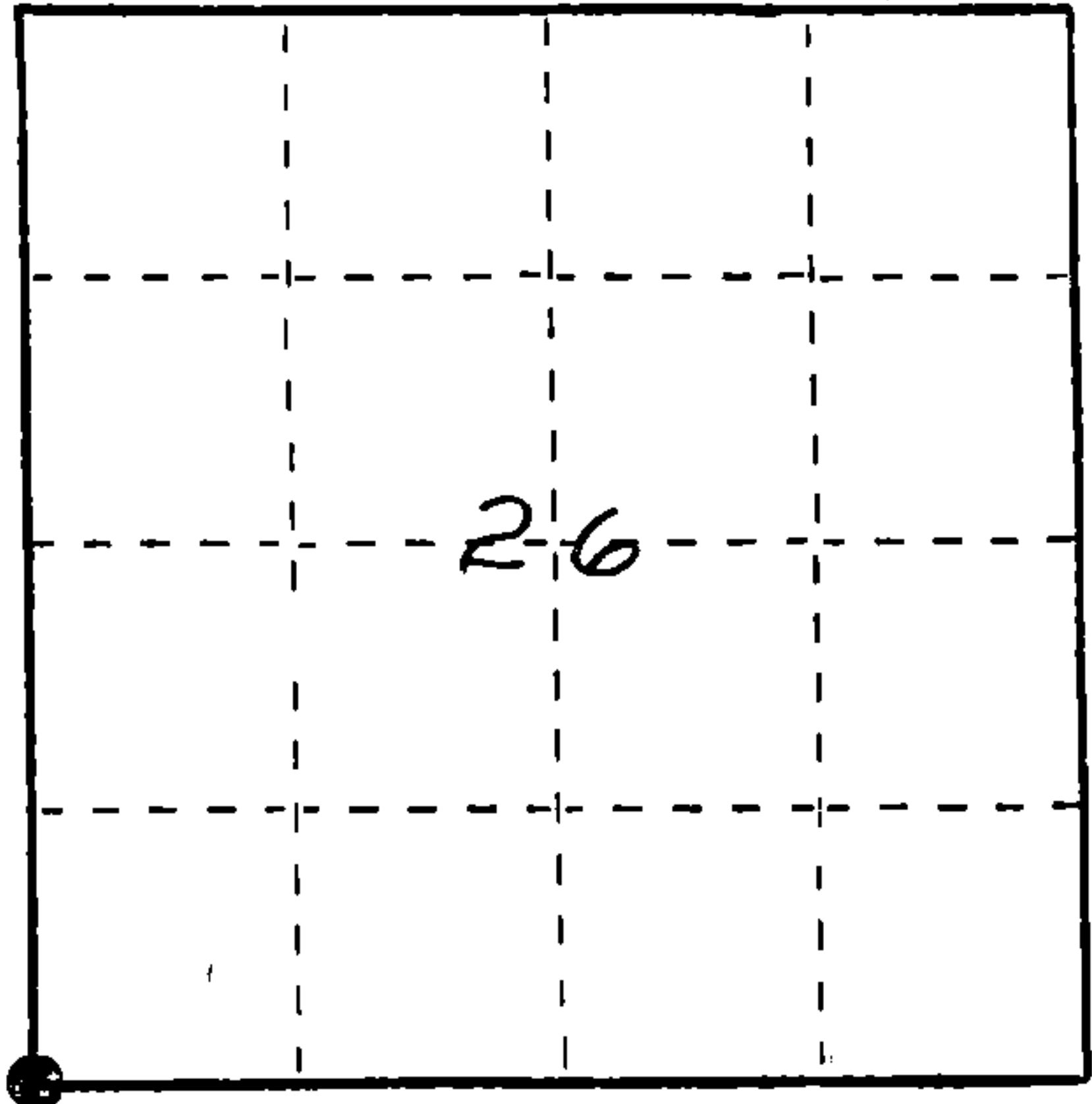
U. S. PUBLIC LAND SURVEY MONUMENT RECORD

INSTRUCTIONS: This record shall show the location of the corner and shall include all of the following nine elements (a through i).

- (a) Identify the corner by reference to the U.S. public land survey system.
 O = Corner monument restored.

Southwest Corner of
 Section 26, T38N, R14E

REGISTER'S OFFICE
 Forest County, Wis.
 Received for record this 5th day
 of November A.D., 1986 at
3:50 o'clock P.M. and recorded
 in Vol. CORNER RESTORATIONS
 page V-17
Paul Archambrenner
 Register of Deeds



- (b) Describe any record evidence, monument evidence, occupational evidence, testimonial evidence or any other material evidence you considered, and whether the monument was found or placed.

In 1865 James L. Nowlin set wood post with the following BTs: Spruce 12", N5°W, 18 links; Spruce 10", N44°E, 20 links.

Found 2" diameter iron pipe with 3" diameter brass tablet stamped to identify corner, Corner was set by Jean F. Resvick in 1967.

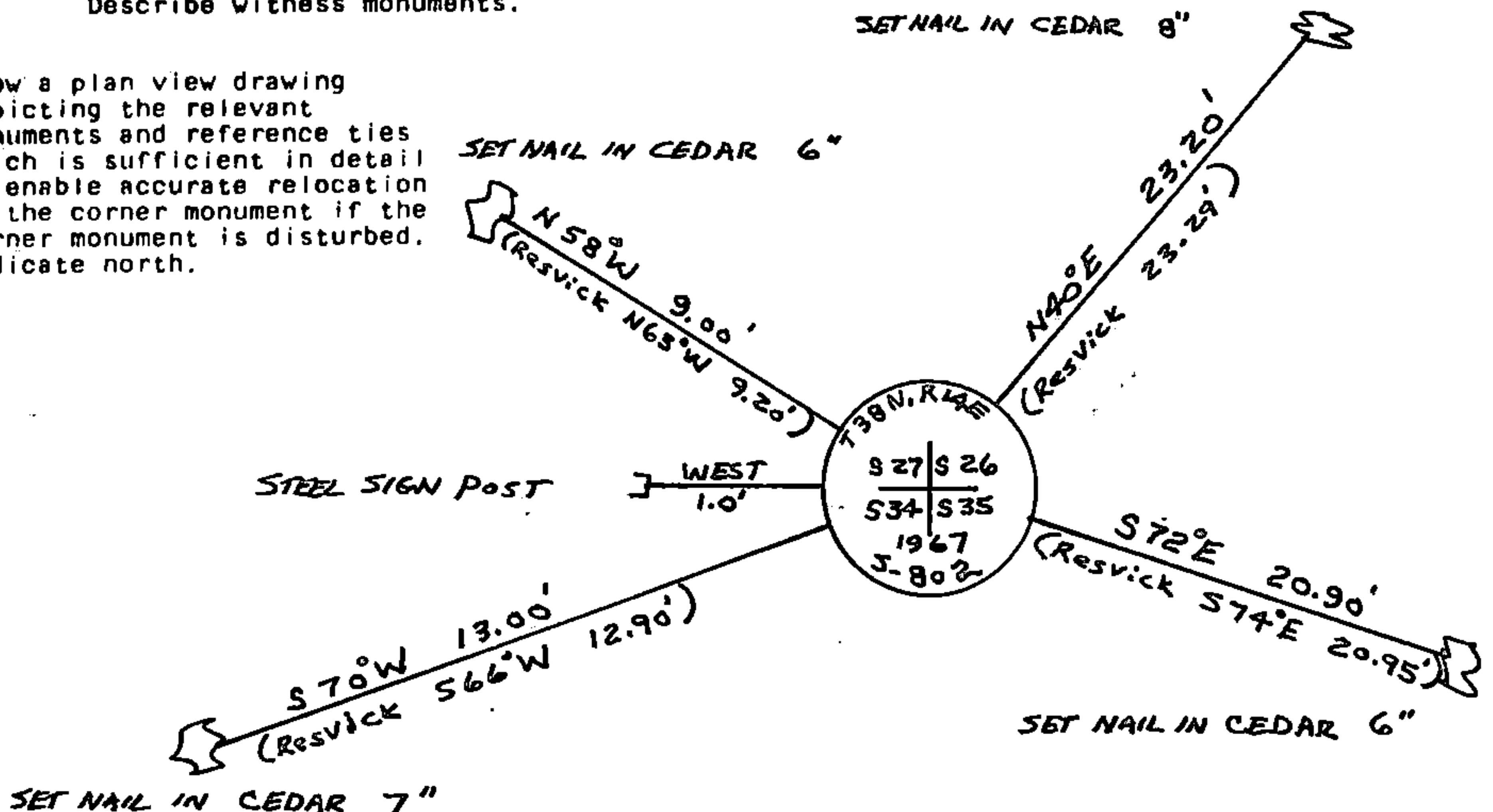
Wood post S40°W 0.9 feet

BTs found (Resvicks)

Cedar	6"	N40°E	23.29 feet
Cedar	5"	S74°E	20.95 feet
Cedar	5"	S66°W	12.9 feet
Cedar	3"	N63°W	9.2 feet

- (c) In the plan view drawing below, provide reference ties to at least 4 witness monuments, or, if the location is within a municipality, to at least 2 witness monuments. (Witness monuments shall be made of concrete, natural stone, iron or other equally durable material.)
 Describe witness monuments.

- (d) Show a plan view drawing depicting the relevant monuments and reference ties which is sufficient in detail to enable accurate relocation of the corner monument if the corner monument is disturbed. Indicate north.



- (e) Describe any material discrepancy between the location of the corner as restored or reestablished and the location of that corner as previously restored or reestablished by distance and direction. Show the discrepancy on the plan view drawing under (d), above. Show the distances between the corner as previously restored or reestablished and (1) the corner as restored or reestablished, and (2) to at least 2 of the witness monuments shown on the drawing in (d), above.

See (d)

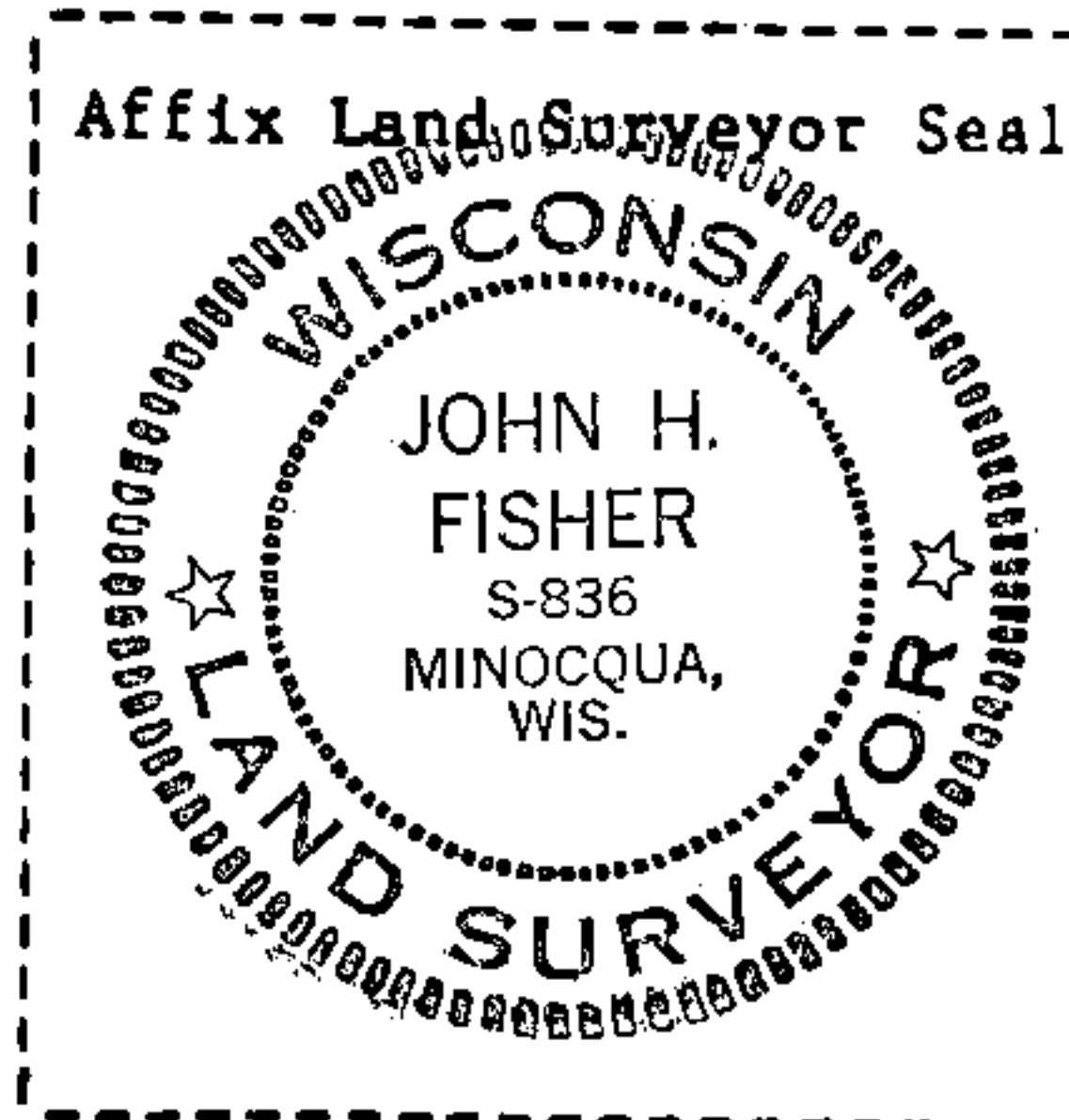
- (f) Was the corner restored through acceptance of (1) an obliterated evidence location, or, (2) a found perpetuated location?

Through acceptance of a found perpetuated location

- (g&h) Was the corner reestablished through lost corner proportionate methods? If so, show the method, including the directions and distances to other public land survey corners used as evidence or used for proportioning in determining the corner location?

NO

[Faint, illegible handwritten notes]



- (1) I, John H. Fisher
(Type or print name) certify that the corner location shown on this record was determined by me or under my direction and control and that this U.S. Public Land Survey Monument Record is correct and complete to the best of my knowledge and belief.

John H. Fisher
Signature

10/30/86
Date