

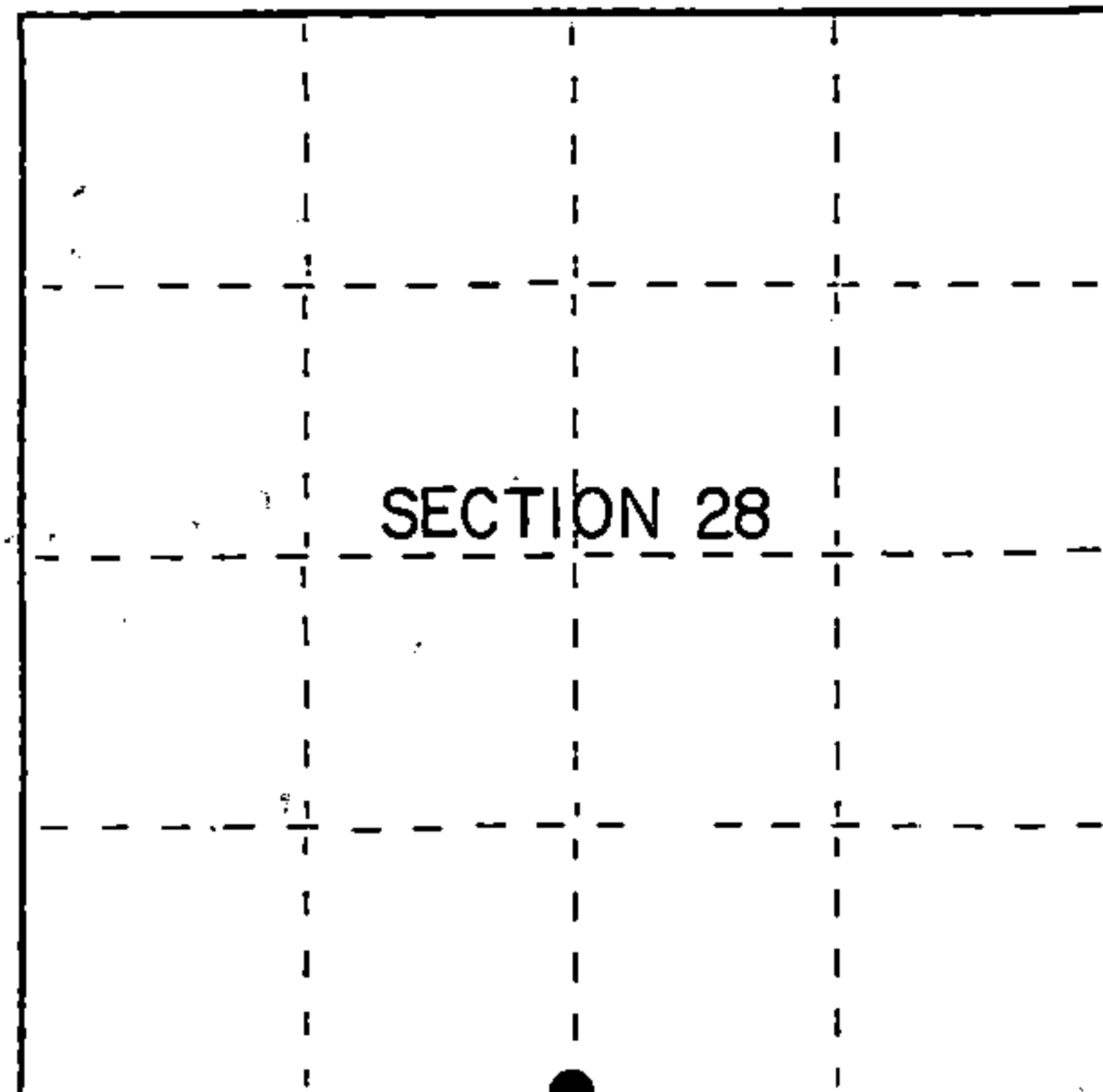
U.S. PUBLIC LAND SURVEY MONUMENT RECORD

Index No. V-II

State of Wisconsin }
County of Forest } ss.

I, Gary L. Pisoni, do hereby certify that on the 6th day of March, 19 89, I found evidence of the South quarter corner of Section 28 Township 38, North, Range 14 East, Fourth Principal Meridian, as described hereon; and that from this evidence I established a new monument and accessories as described hereon to perpetuate the original location of this corner.

Resident witnesses:



● = Corner monument restored.

History of original corner establishment:

Original Government survey in 1865 by James L. Nowlin. S 89°51'W corrected between Sections 28 and 33, 40.25 chains, set quarter section post to Sections 28 and 33 from which the following bear:

Fir	12"	N 32°E	15 links
Fir	10"	S 35°W	

Description of corner evidence found:

No original corner evidence found.

On November 4, 1966, Jean Resvick, U.S.F.S. found a 3/4" diameter iron pipe at corner position. On March 6, 1989, I found same 3/4" pipe by 4' long marking corner position. No other evidence found and accepted iron pipe at best available evidence for restoring this corner position.

Description of monument and accessories I established to perpetuate the original location of this corner.

In place of iron pipe, as described above, set a 2 1/2" diameter aluminum pipe monument, 3 feet long, 33 inches in the ground, with an aluminum cap stamped: T38N, R14E, 1/4, S-28, S-33, 1989, S-1634 from which the following new blazed and scribed bearing trees bear (all measurements taken to a nail in side of tree):

Spruce	8"	S 07°E	6.36 feet
Hemlock	14"	N 55°W	22.10 feet
Spruce	12"	N 06°W	34.93 feet
Steel sign post		N 42°E	1.55 feet

Dated at Iron River, MI, Wis., this 18th day of December, 19 89.

Signature Gary L. Pisoni Title Land Surveyor Registration No. S-1634
(County Surveyor, Registered Land Surveyor, or other duly authorized official)

Office of Register of Deeds, County of Forest, I hereby certify that the within instrument was filed in this office for record on the 20th day of September, 19 90 at 10:45 o'clock A. M.

(Register of Deeds)

By Deak Chitko Deputy

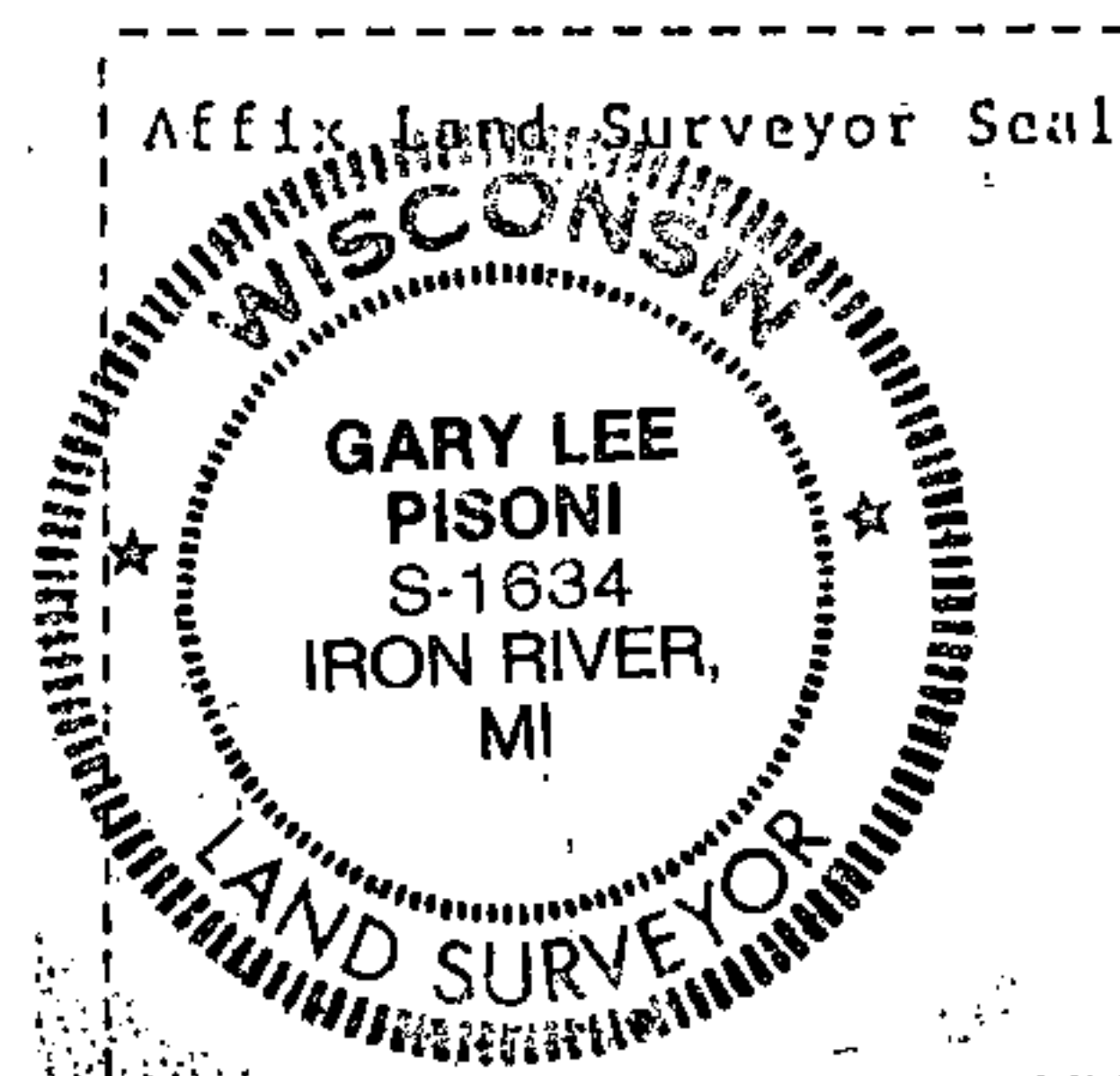
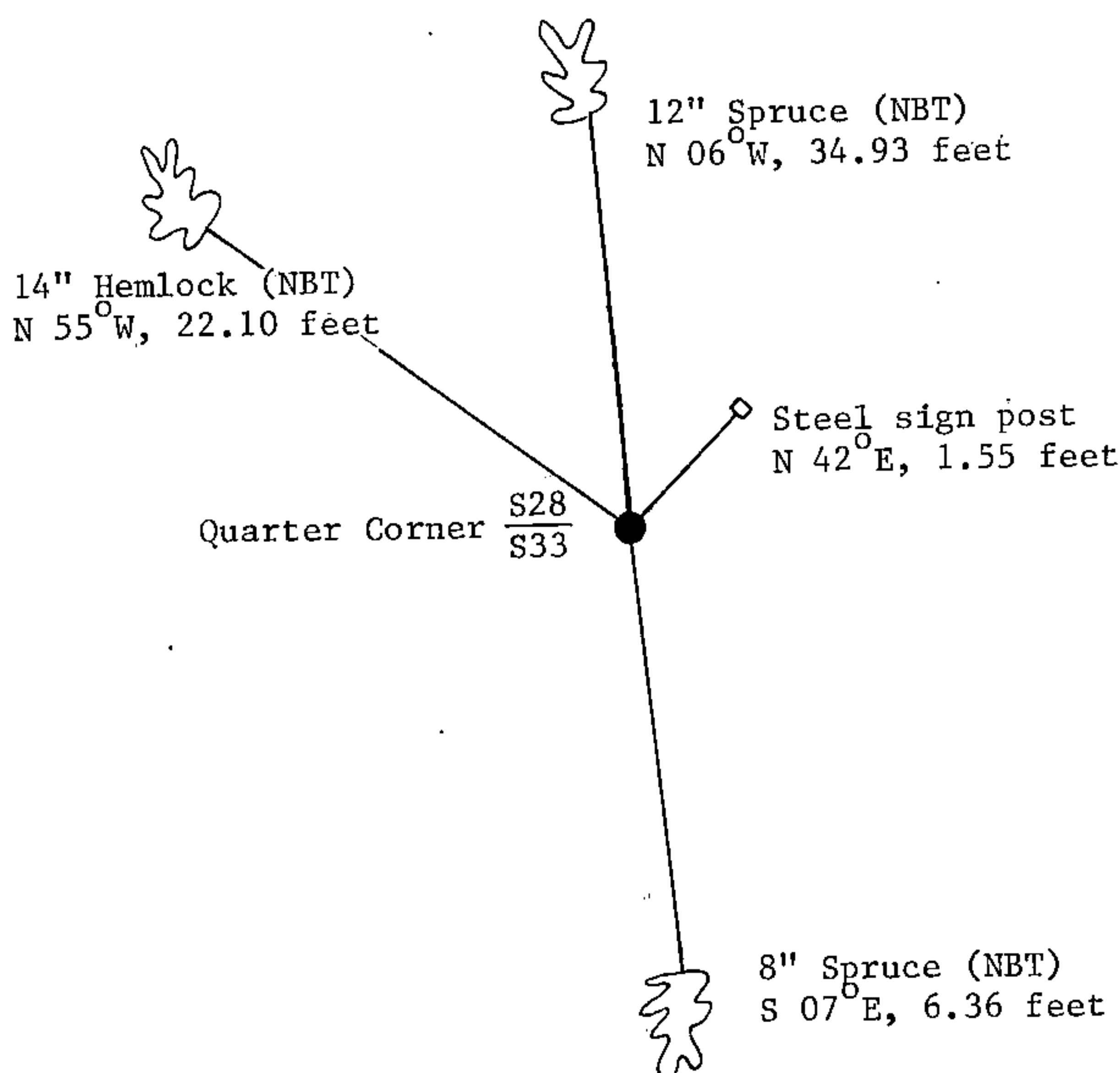
(e) Describe any material discrepancy between the location of the corner as restored or reestablished and the location of that corner as previously restored or reestablished by distance and direction. Show the discrepancy on the plan view drawing under (d), above. Show the distances between the corner as previously restored or reestablished and (1) the corner as restored or reestablished, and (2) to at least 2 of the witness monuments shown on the drawing in (d), above.

See drawing below.

(f) Was the corner restored through acceptance of (1) an obliterated evidence location, or, (2) a found perpetuated location?

Restored from accepted evidence.

(g&h) Was the corner reestablished through lost corner proportionate methods? If so, show the method, including the directions and distances to other public land survey corners used as evidence or used for proportioning in determining the corner location?



Gary L. Pisoni

(i) I, Gary L. Pisoni (type or print name) certify that the corner location shown on this record was determined by me or under my direction and control and that this U.S. Public Land Survey Monument Record is correct and complete to the best of my knowledge and belief.

Signature

Date

Survey requested by:

District Ranger

Date