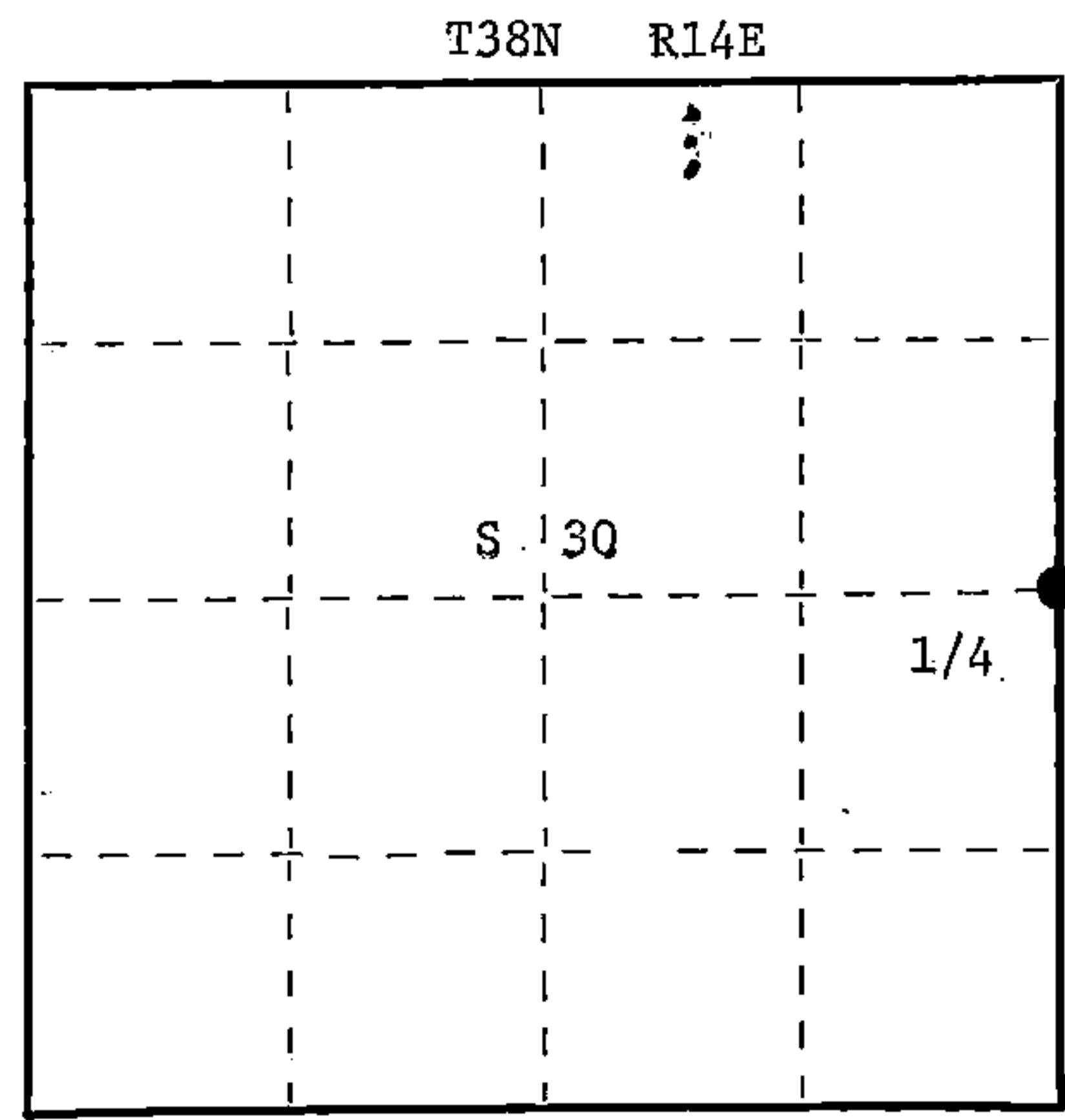


Document Number 127503

FORM 985 H. C. MILLER CO., MILWAUKEE

State of Wisconsin }  
County of Forest } ss.  
Glen Barker  
I, Glen Barker, do hereby  
certify that on the 12th day  
of December, 1984, I found  
established Quarter  
corner of Sections 29 & 30  
Township 38 North, Range  
14 East, Fourth Principal Meridian,  
as described hereon; and that from this evidence  
I established a new monument and accessories  
as described hereon to perpetuate the original  
location of this corner.

Resident witnesses:  
N. Spiess  
R. Lundt



○ = Corner monument restored.

CERTIFIED LAND CORNER RESTORATION  
U.S. PUBLIC LAND SURVEY RECORD

Index No. T-5  
T 5

History of original corner establishment:

Original corner established in 1864 by James L. Nowlin, deputy surveyor from  
which birch 12" bears N55E 13 lks and sugar 8" S79W 20 lks.

Description of corner evidence found:

Corner re-established by proportionate method.  
Total distance from section corner 29-30-31-32 to section corner 19-20-29-30 is 5249.04'.  
Set 1/4 corner 2624.52' intermediate.

Description of monument and accessories I established to perpetuate the original location of this corner.

Set a 2 1/2" A-1 Federal-Forest County monument cap stamped: T38N R14E  
Rock cairn around monument.  
Marked-NBTs: 1/4 S30 S29  
Sugar 6" N33W 31.75'  
Sugar 8" N75E 56.85' S1682  
Maple 12" S43E 53.14' 1984  
Maple 6" S61W 14.73'

Dated at Rhinelander, Wis., this 4th day of February, 1985.

Signature Glen Barker Title Registered Land Surveyor Registration No. 1682  
(County Surveyor, Registered Land Surveyor, or other duly authorized official)

Office of Register of Deeds, County of Forest, I hereby certify that the within  
instrument was filed in this office for record on the 22nd day of February, 1985.  
at 2:15 o'clock P. M.

Paul Aschenbrenner  
(Register of Deeds)

By Deputy

43814302000

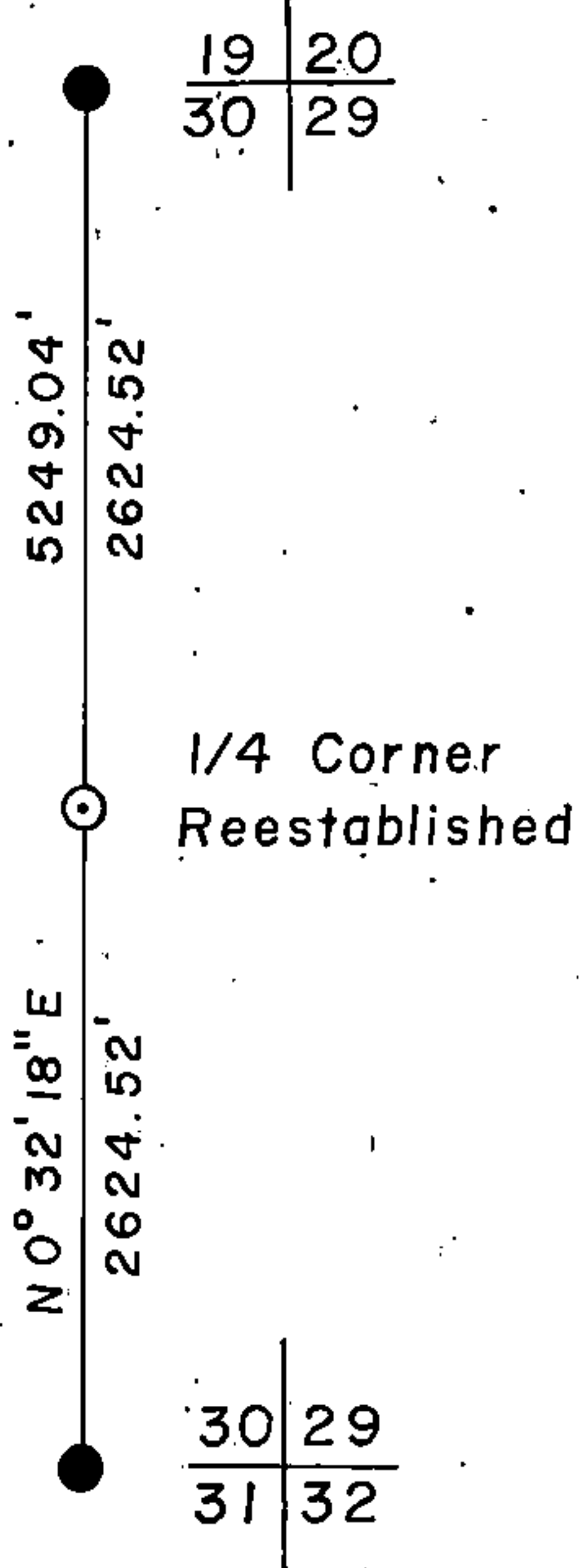
(e) Describe any material discrepancy between the location of the corner as restored or reestablished and the location of that corner as previously restored or reestablished by distance and direction. Show the discrepancy on the plan view drawing under (d), above. Show the distances between the corner as previously restored or reestablished and (1) the corner as restored or reestablished, and (2) to at least 2 of the witness monuments shown on the drawing in (d), above.

See drawing below

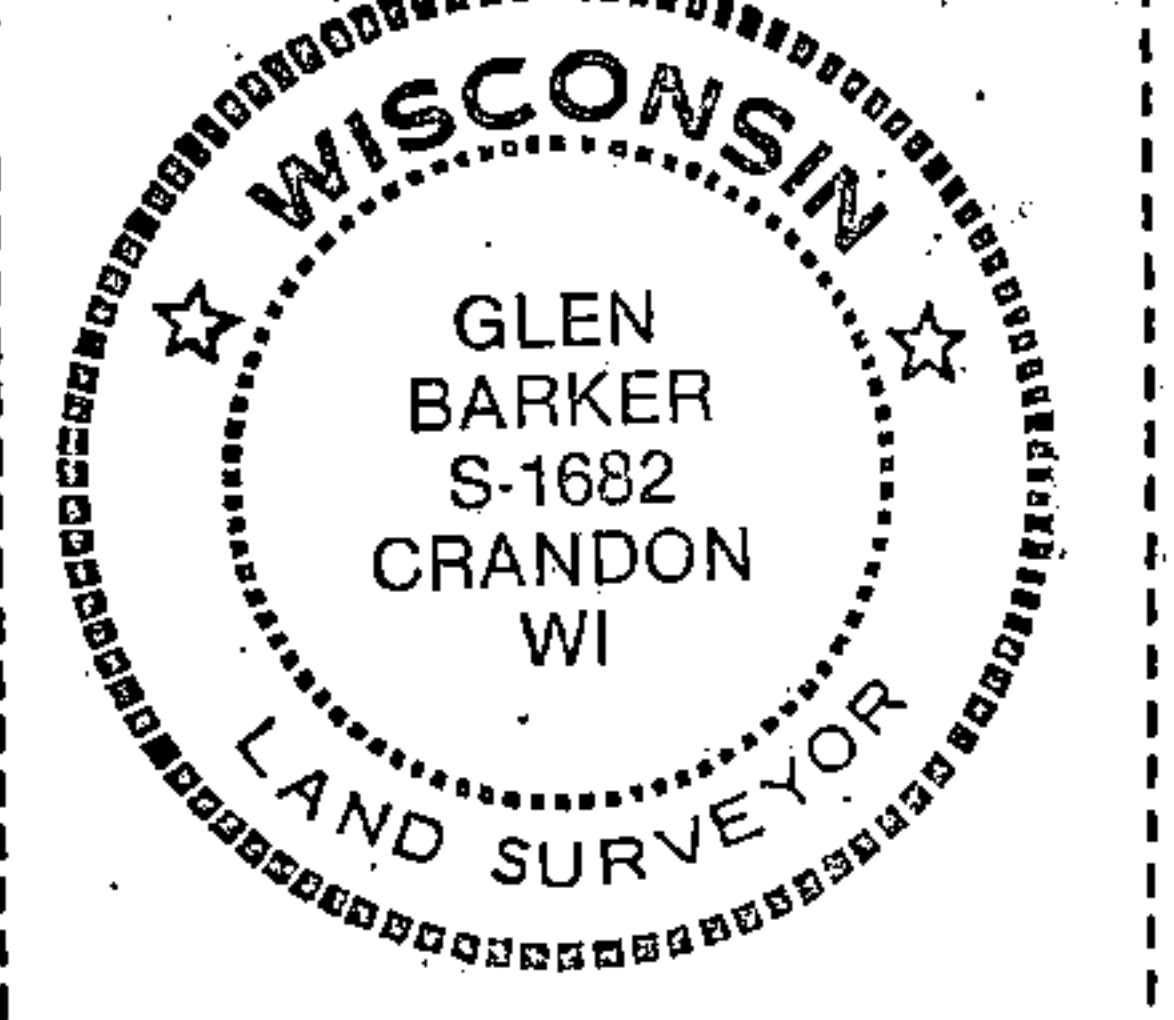
(f) Was the corner restored through acceptance of (1) an obliterated evidence location, or, (2) a found perpetuated location?

(g&h) Was the corner reestablished through lost corner proportionate methods? If so, show the method, including the directions and distances to other public land survey corners used as evidence or used for proportioning in determining the corner location?

Proportionate method.



Affix Land Surveyor Seal



(i) I, Glen Barker  
(type or print name) certify that the corner location shown on this record was determined by me or under my direction and control and that this U.S. Public Land Survey Monument Record is correct and complete to the best of my knowledge and belief.

Signature

Date

2/4/85