

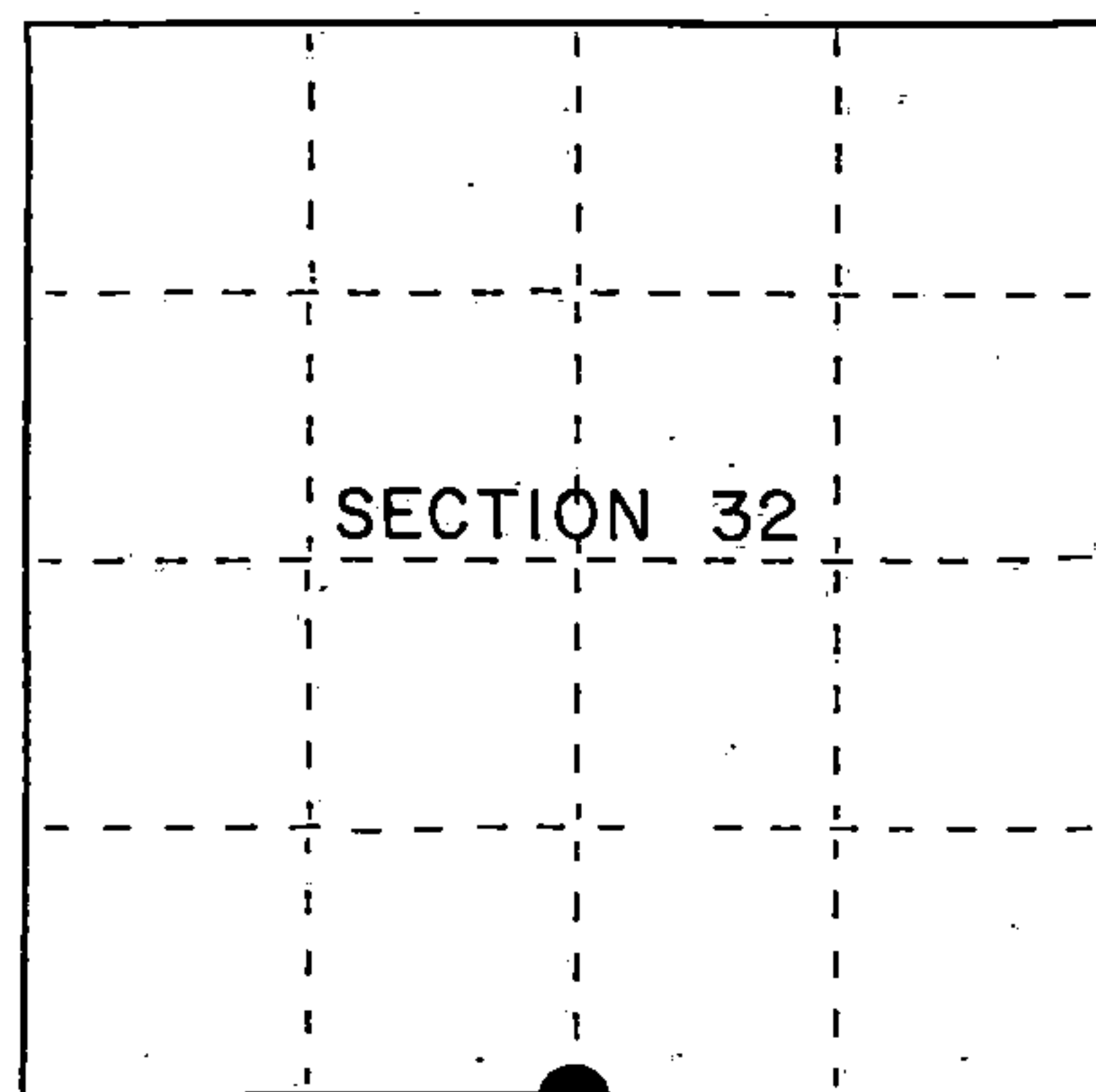
U.S. PUBLIC LAND SURVEY MONUMENT RECORD

Index No. Z - 7

State of Wisconsin }
County of Forest } ss.

I Gary L. Pisoni, do hereby certify that on the 31st day of January, 1995, I found evidence of the South Quarter corner of Section 32 Township 38, North, Range 14 East, Fourth Principal Meridian, as described hereon; and that from this evidence I established a new monument and accessories as described hereon to perpetuate the original location of this corner.

Resident witnesses:



● = Corner monument restored.

History of original corner establishment:

Original Government Survey in 1858 by Alfred Millard. At 40.00 chains, set Quarter Section Post, from which the following bear; Spruce, 6", N45°W, 5 lks., Spruce, 6", S28°E, 31 lks.

In 1987, Glen Barker, RLS, with Consolidated Papers, found an old post point and a location tag on a Cedar tree. This position has been maintained by Consolidated Papers according to CPI maps. In place of post, set a 2 1/4" dia. Forest County Aluminum monument with an alloy cap stamped to identify the corner. Blazed and scribed the following;

	Black Ash	5"	N10°E	31.14 feet
	Black Ash	8"	N66°W	12.12 feet
Description of corner evidence found:	Cedar	12"	S36°W	48.43 feet
	Cedar	12"	South	28.00 feet

Found monument and bearing trees as described above.

Black Ash	5"	N10°E	31.16 feet
Black Ash	8"	N66°W	12.12 feet
Cedar	12"	S36°W	48.35 feet
Cedar (Dead)		South	28.00 feet

Description of monument and accessories I established to perpetuate the original location of this corner.

Blazed and scribed a new bearing tree: (Measurement taken to a nail in side of tree)

Cedar	11"	S57°E	61.14 feet
Steel Sign Post		N61°E	1.00 feet

Dated at Iron River, MI, Wis., this 5th day of March, 1995

Signature Gary L. Pisoni Title Land Surveyor Registration No S-1634
(County Surveyor, Registered Land Surveyor, or other duly authorized official)

Office of Register of Deeds, County of Forest, I hereby certify that the within instrument was filed in this office for record on the 20th day of March, 1997 at 1:30 o'clock P M.

(Register of Deeds)

By Paul T. [Signature] Deputy

- e) Describe any material discrepancy between the location of the corner as restored or reestablished and the location of that corner as previously restored or reestablished by distance and direction. Show the discrepancy on the plan view drawing under (d), above. Show the distances between the corner as previously restored or reestablished and (1) the corner as restored or reestablished, and (2) to at least 2 of the witness monuments shown on the drawing in (d), above.

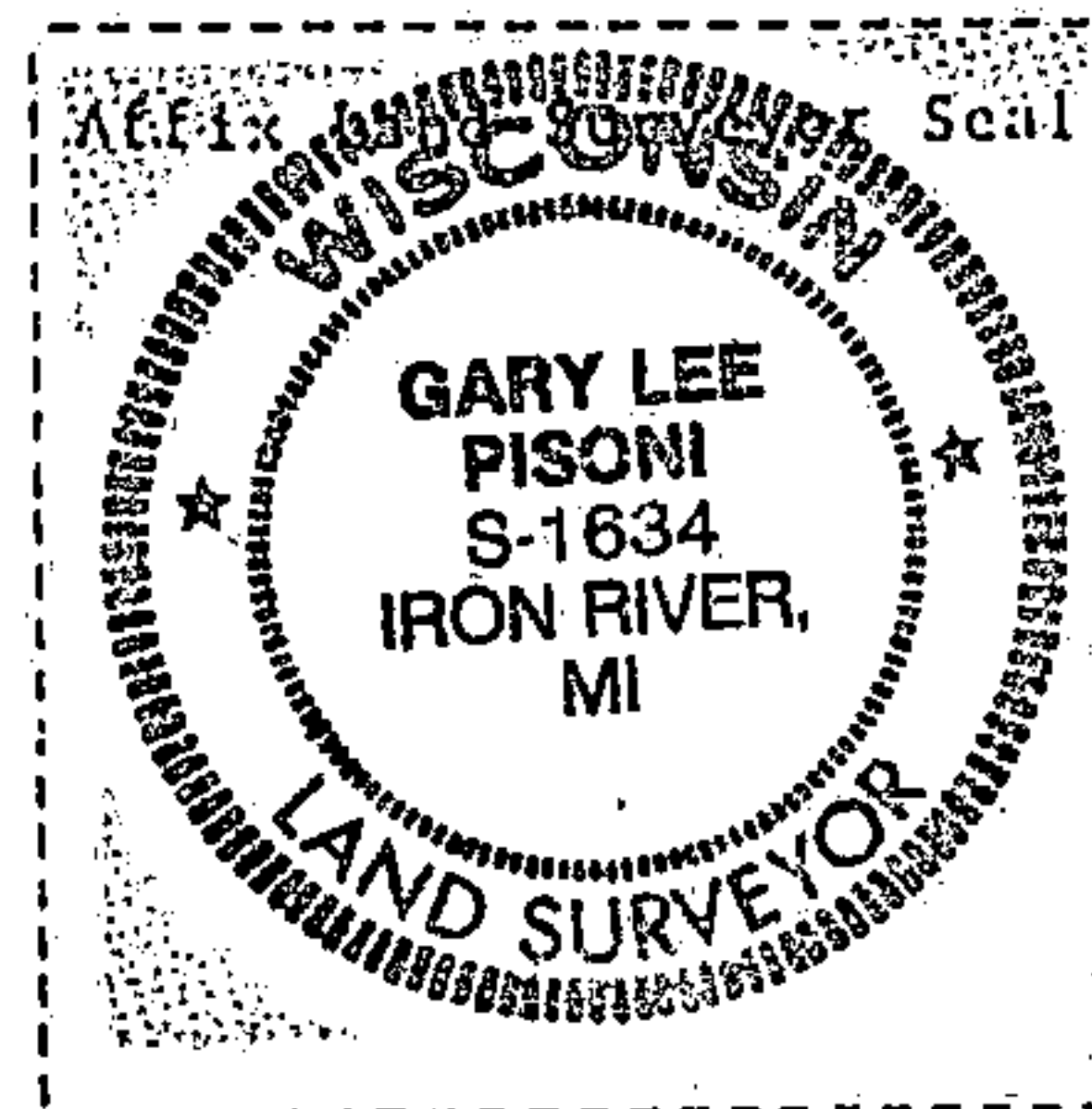
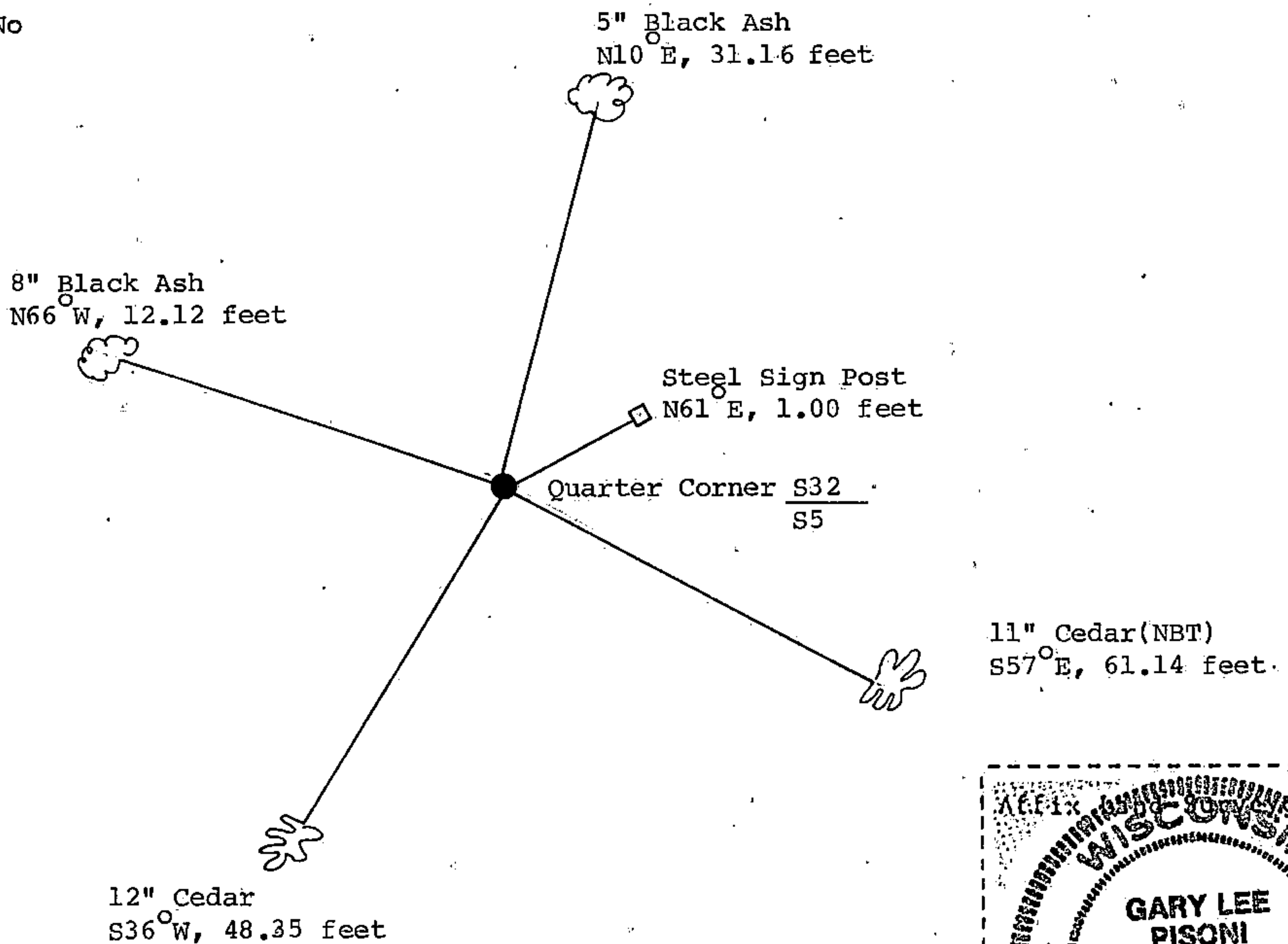
None

- (f) Was the corner restored through acceptance of (1) an obliterated evidence location, or, (2) a found perpetuated location?

Restored through acceptance of a found perpetuated location.

- (g&h) Was the corner reestablished through lost corner proportionate methods? If so, show the method, including the directions and distances to other public land survey corners used as evidence or used for proportioning in determining the corner location?

No



- (i) I, Gary L. Pisoni
(type or print name) certify that the corner location shown on this record was determined by me or under my direction and control and that this U.S. Public Land Survey Monument Record is correct and complete to the best of my knowledge and belief.

Signature

Gary L. Pisoni

Date

4-10-95

DOCUMENT NUMBER
135243

FORM 985 H. C. MILLER CO., MILWAUKEE

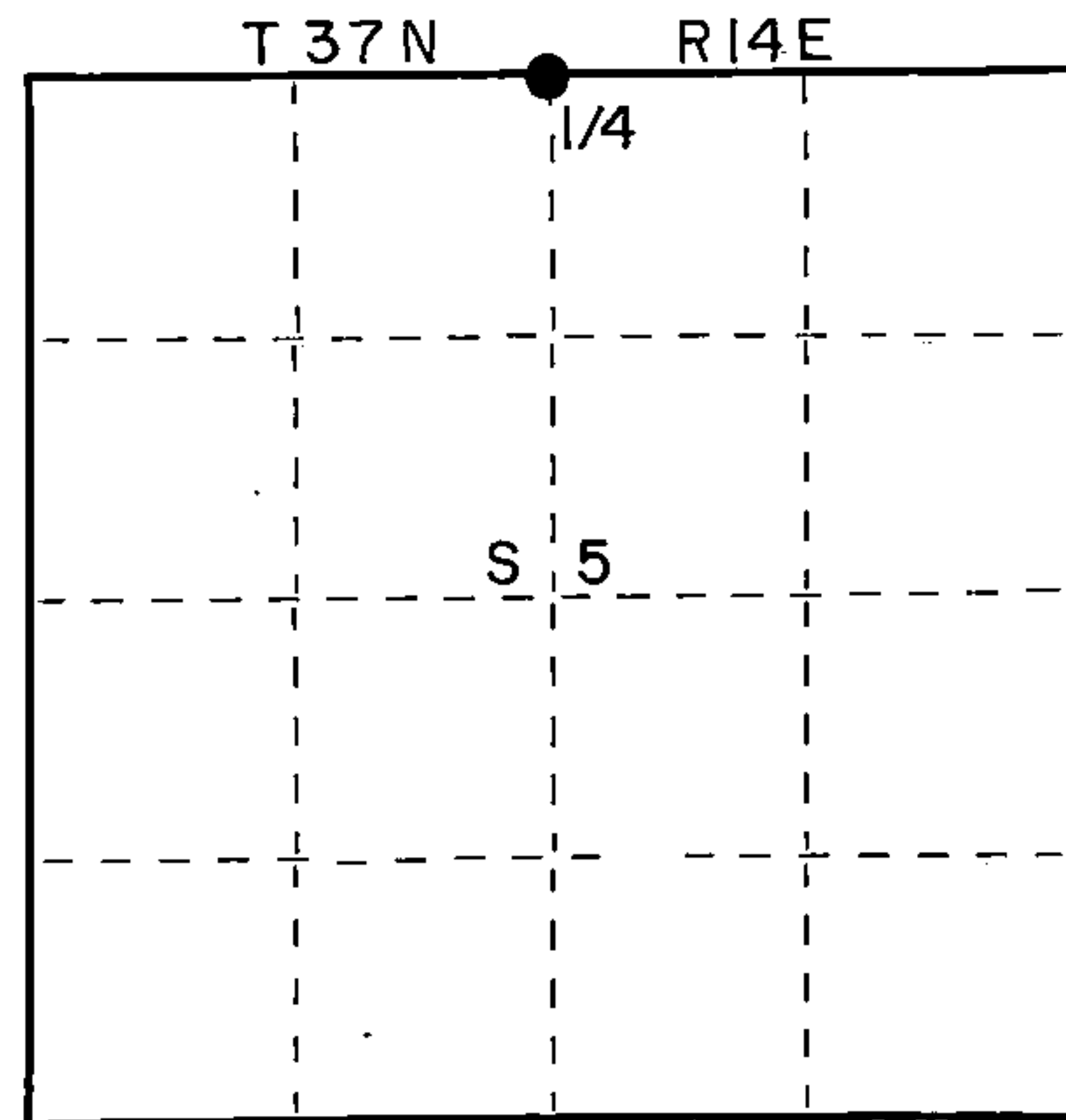
State of Wisconsin }
County of Forest } ss.

I Glen Barker, do hereby
certify that on the 12th day
of November, 19 87, I found
evidence of the Quarter Section
corner of 5 & 32
Township 37 & 38, North, Range
14 East, Fourth Principal Meridian,
as described hereon; and that from this evidence
I established a new monument and accessories
as described hereon to perpetuate the original
location of this corner.

Resident witnesses:

N. Spiess

H. Wagoner



○ = Corner monument restored.

CERTIFIED LAND CORNER RESTORATION
U.S. PUBLIC LAND SURVEY

Index No. A-7

History of original corner establishment:

Original corner established by A. Curtis, Deputy Surveyor, in 1857 from
which Spruce 6" bears N45°W 5 lks and spruce 6" bears S28°E 31 lks.

Description of corner evidence found:

Recovered two old post points under swamp turf and muck, also an old location
tag on a 12" cedar stating the corner to be 28.0' north. Old CPI type maps
identify this position the same as found. Ray Leigh, CPI forester for many
years, maintained this position.

Description of monument and accessories I established to perpetuate the original location of this corner.
Set a 2 1/4" Forest County aluminum monument with 3 1/4" alloy cap stamped:
Monument projects 12" above ground.

Marked NBT's

Black Ash 5" N10°E 31.14'
Black Ash 8" N66°W 12.12'
Cedar 12" S36°W 48.43'
Cedar 12" South 28.00'

R14E
1/4 S32 T38N
S5 T37N
1987
S1682

Dated at _____, Wis., this _____ day of _____, 19 _____

Signature Glen Barker Title Surveyor Registration No. 1682
(County Surveyor, Registered Land Surveyor, or other duly authorized official)

Office of Register of Deeds, County of Forest, I hereby certify that the within
instrument was filed in this office for record on the 18th day of May, 1988
at 1:05 o'clock P. M.

Paul Aschenbrenner
(Register of Deeds)

By _____ Deputy

43814320020

(e) Describe any material discrepancy between the location of the corner as restored or reestablished and the location of that corner as previously restored or reestablished by distance and direction. Show the discrepancy on the plan view drawing under (d), above. Show the distances between the corner as previously restored or reestablished and (1) the corner as restored or reestablished, and (2) to at least 2 of the witness monuments shown on the drawing in (d), above.

(f) Was the corner restored through acceptance of (1) an obliterated evidence location, or, (2) a found perpetuated location?

Perpetuated Location

(g&h) Was the corner reestablished through lost corner proportionate methods? If so, show the method, including the directions and distances to other public land survey corners used as evidence or used for proportioning in determining the corner location?

(i) I, Glen Barker
(type or print name) certify that the corner location shown on this record was determined by me or under my direction and control and that this U.S. Public Land Survey Monument Record is correct and complete to the best of my knowledge and belief.

Signature

Date

