

U.S. PUBLIC LAND SURVEY MONUMENT RECORD

NOTE: This form is intended and designed to fulfill all requirements of Wisconsin Administrative Code, Chapter A-E 7.08 U.S. Public Land Survey Monument Record (3) (a-i)

A-E 7.08(3)(a) Identity of corner:
Meander Corner East line Section 36,
NORTH SIDE of Van Zile Lake
Township 38 North, Range 14 East
of the Fourth Principal Meridian,
Town of Ross, Forest County, Wisconsin

WISCRS - FOREST COUNTY
N: 626,402.203 USft (XXX,XXX.XXX)
E: 894,173.999 USft (XXX,XXX.XXX)
Datum: NAD83 (2011)
GNSS Method RTK
GNSS Control WISCORS VRS

The coordinate value shown has been verified by the average of two or more GPS observations at a markedly different time. Coordinates shown in parenthesis are previously published values.

A-E 7.08(3)(b)

Original Surveyor: Artemas Curtis - October 1857
White Pine 14 - N 46° W, 215 Links, Tamarac 5 - S 58° E, 39 Links

THENCE:

November 12, 2024 - In performing the 2024 - Forest County - "PLSS Corner Remonumentation and GPS Services" project, I made a careful search of the area and found no evidence of the original corner or subsequent evidence of the corner location.

I did find Resvick's meander corner on the west side of the peninsula. The monument was laying on the lake bed in $\pm 16"$ of water. The bottom end of the monument was near a pile of stones that measured N86°W, ± 10.22 feet from a 20" white pine that has traces of red paint in the bark.

In 1969, Resvick set this monument from original evidence, and witnessed the corner with a "white pine, 17 ins. diam. S86°E, 10.22 ft.". I accepted the pile of stones on the lake bed as a perpetuation of the original meander corner.

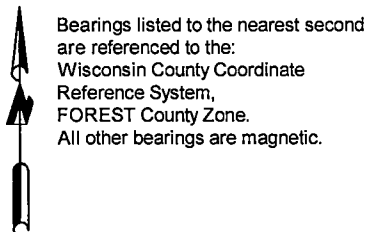
March 13, 2025 - I established a calculated position for the Southeast corner of Section 36 using original evidence at the meaner corner on the west side of the peninsula on Van Zile, Lake.

I set a 2.4" diameter X 30.5" long aluminum pipe monument with a 3.25" diameter aluminum cap stamped to identify the corner location, on a line between the calculated section corner, and the East 1/4 corner of Section 36.

The monument is $\pm 30'$ from the edge of water in a tamarack swamp, and is flush with grade.

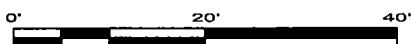
I established 4 new reference monuments as shown below.

A-E 7.08(3)(c)(d) Plan view of corner with references to at least 4 witness monuments.



LEGEND

Monument sizes = outside diameter measurements.



A-E 7.08(3)(e) 1857 Surveyor set a post. I set an aluminum pipe monument in 2025.

A-E 7.08(3)(f) I accept this monument in good faith as an ESTABLISHED WITNESS to the original corner.

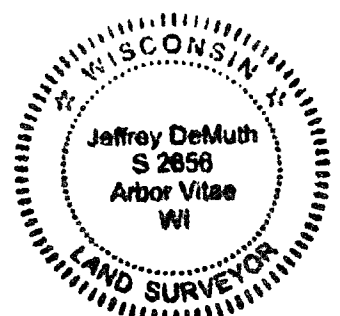
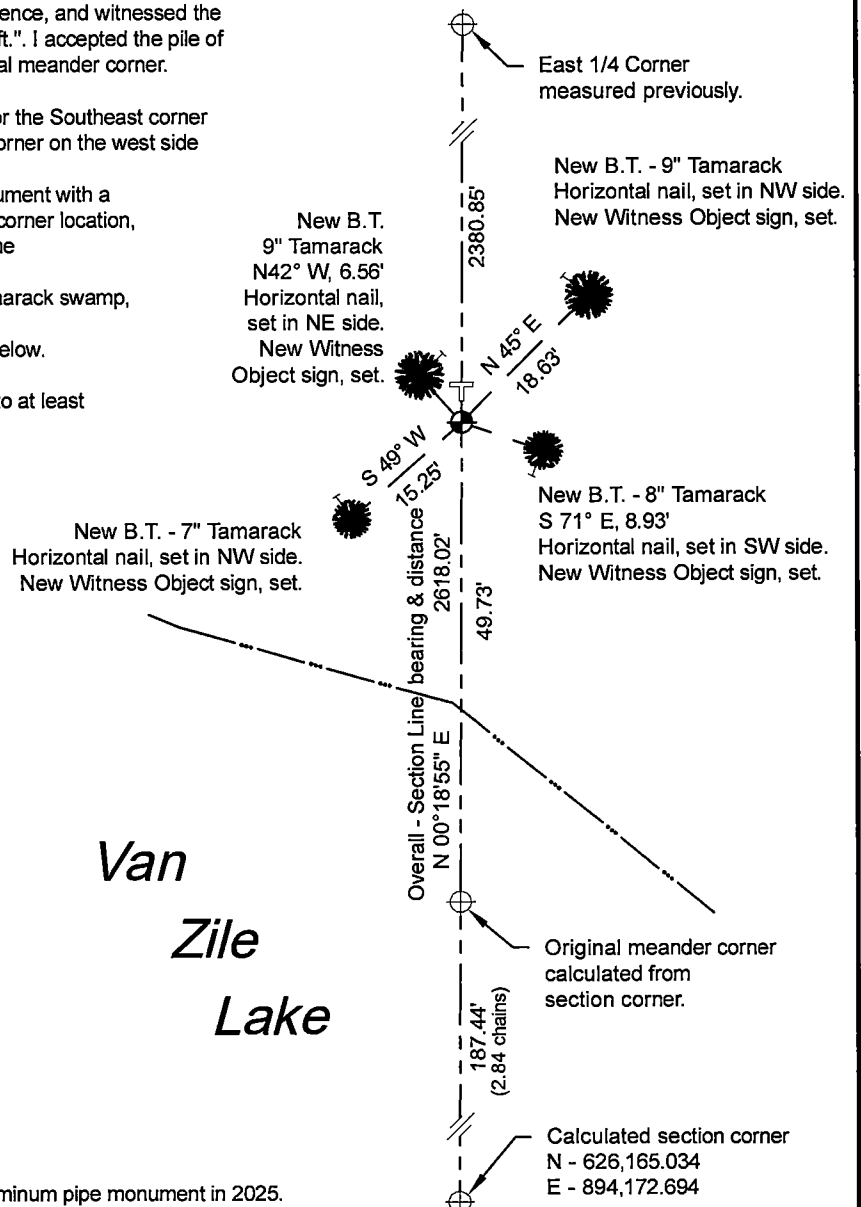
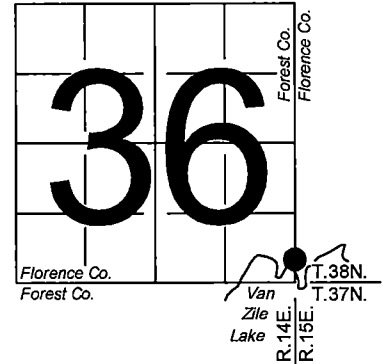
A-E 7.08(3)(g)(h) This corner was not determined through lost-corner-proportionate methods.

A-E 7.08(3)(i) I, Jeffrey L. DeMuth, Professional Land Surveyor No. S-2656, hereby certify that the corner location on this record was determined by me or under my direction and control, and that this U.S. Public Land Survey Monument Record is correct and complete to the best of my knowledge, and belief.

SIGNATURE

March 14, 2025

DATE _____



43814360100

43814360100

725