

CERTIFIED LAND CORNER RESTORATION

Index No. **X 25**

State of Wisconsin }
County of Forest } ss.

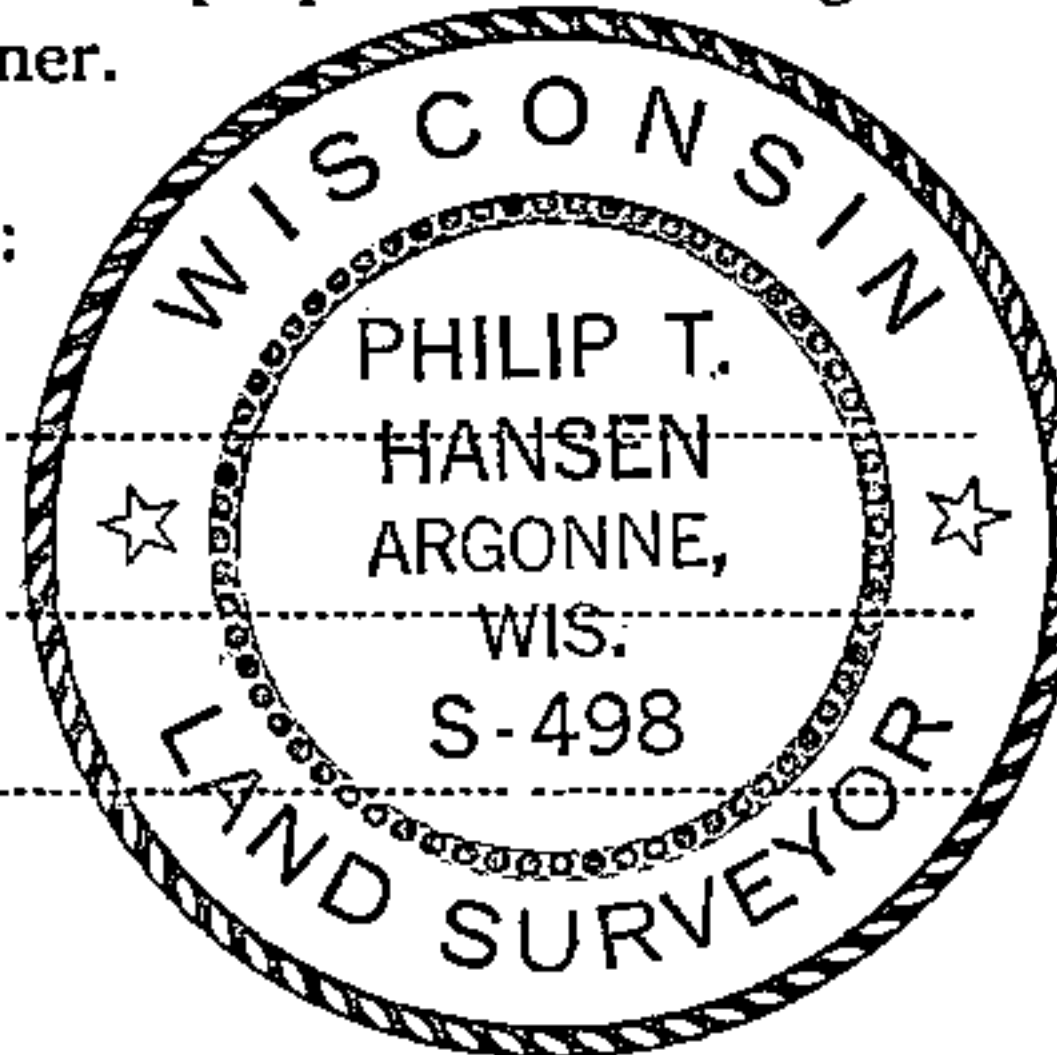
I Philip T. Hansen, do hereby
certify that on the 24th day
of April, 1977, I found
evidence of the Quarter
corner of Section 36 & 31
Township 38, North, Range
14 & 15 East, Fourth Principal Meridian,
as described hereon; and that from this evidence
I established a new monument and accessories
as described hereon to perpetuate the original
location of this corner.

Resident witnesses:

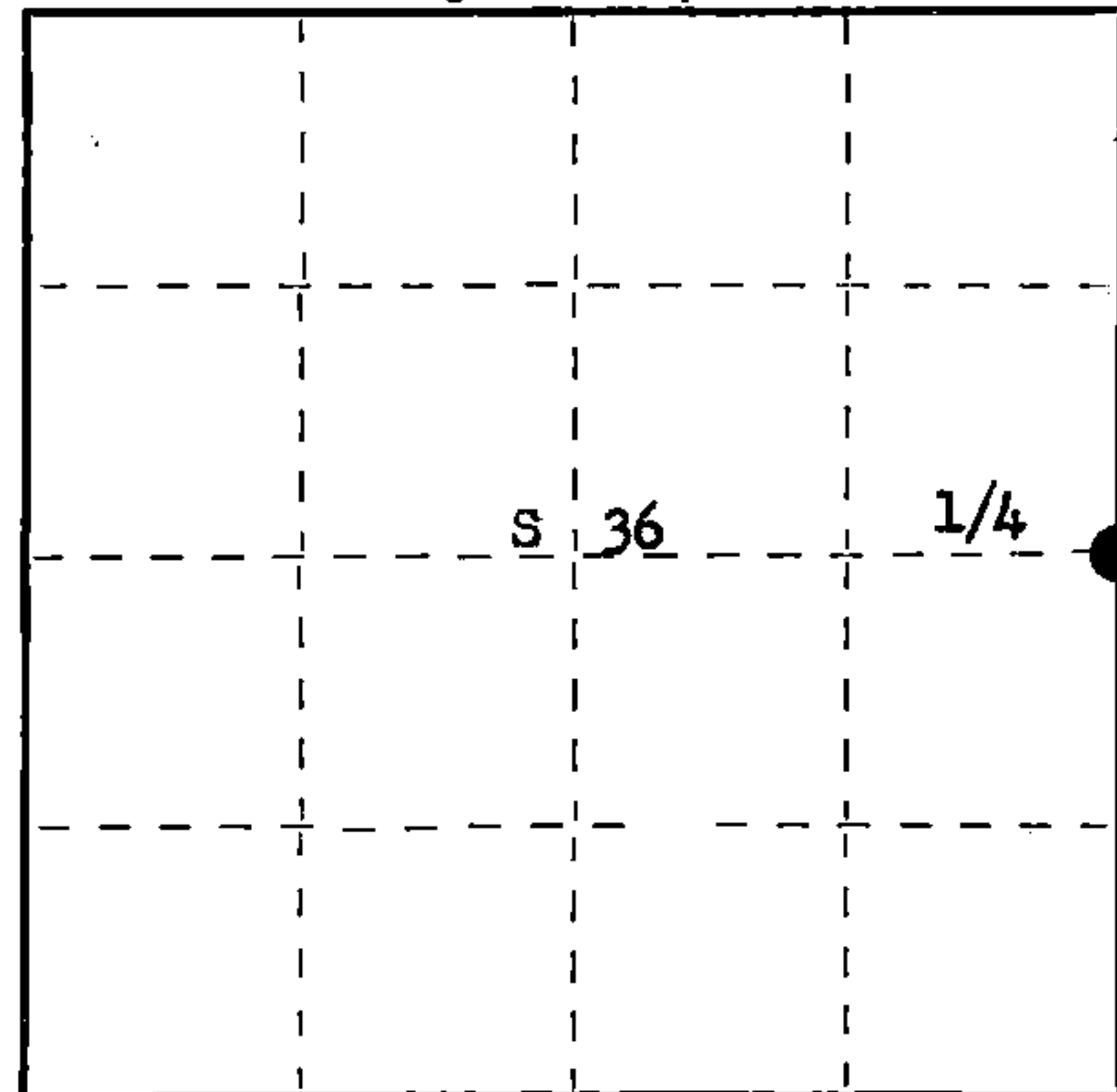
Glen Barker

Jim Claflin

Herb Wagoner



T38N R14E



○ = Corner monument restored.

History of original corner establishment:

Original Corner established by Alfred Millard in 1859 from which cedar 10" bears S16°W
27 links and hemlock 15" bears N6°E 15 links.
No records of any subsequent survey or restoration.

Description of corner evidence found:

Recovered a 3" squared cedar post with large rock cairn around base. A very old squared
5" cedar squared post was lying on the rock cairn.
No evidence of any old BTs were visible.
Connor Company surveyor and forester, Kolbe, has recognized this corner for 30 years.

Description of monument and accessories I established to perpetuate the original location of this corner.

Replaced cedar post with 2 1/2" Berntsen A-1 Federal Monument, aluminum with magnet in cap
and base.

Replaced the rock cairn around base of new monument, cap stamped:

NBTs - Sugar 5" S6°E, 30.1 links, scribed 1/4 BT.

Maple 7" N71°E, 25.4 links, scribed 1/4 BT.

Sugar 8" N49°E, 58.9 links, scribed 1/4 BT.

This corner sets on the northeast edge of a wet pot hole.

R T38N R
14 1/4 36 31 15
E E
S498-1977

Dated at Rhineland, Wis., this 3rd day of May, 1977.

Signature Philip T. Hansen Title Registered Land Surveyor Registration No. S-498
(County Surveyor, Registered Land Surveyor, or other duly authorized official)

Office of Register of Deeds, County of Forest, I hereby certify that the within
instrument was filed in this office for record on the 5th day of May, 1977
at 4:00 o'clock P. M.

Eugene Staszny
(Register of Deeds)

DOCUMENT NUMBER **111361**

By _____ Deputy

43814362000

U.S. PUBLIC LAND SURVEY MONUMENT RECORD

Index No. **X-25**

State of Wisconsin }
County of Forest } ss.

I William B. Cochrane, do hereby
certify that on the 26th day
of February, 1985, I found
evidence of the East Quarter
corner of Section 36
Township 38, North, Range
14 East, Fourth Principal Meridian,
as described hereon; and that from this evidence
I established a new monument and accessories
as described hereon to perpetuate the original
location of this corner.

Resident witnesses:

David Brownell

History of original corner establishment:

Original Government Survey in 1857 by Artemas Curtis. North between sections 31 and 36,
40.00 chains, set quarter corner post to sections 31 and 36. From which the
following bear:

Cedar	10"	S16°W	27 lks.
Hemlock	15"	N6°E	15 lks.

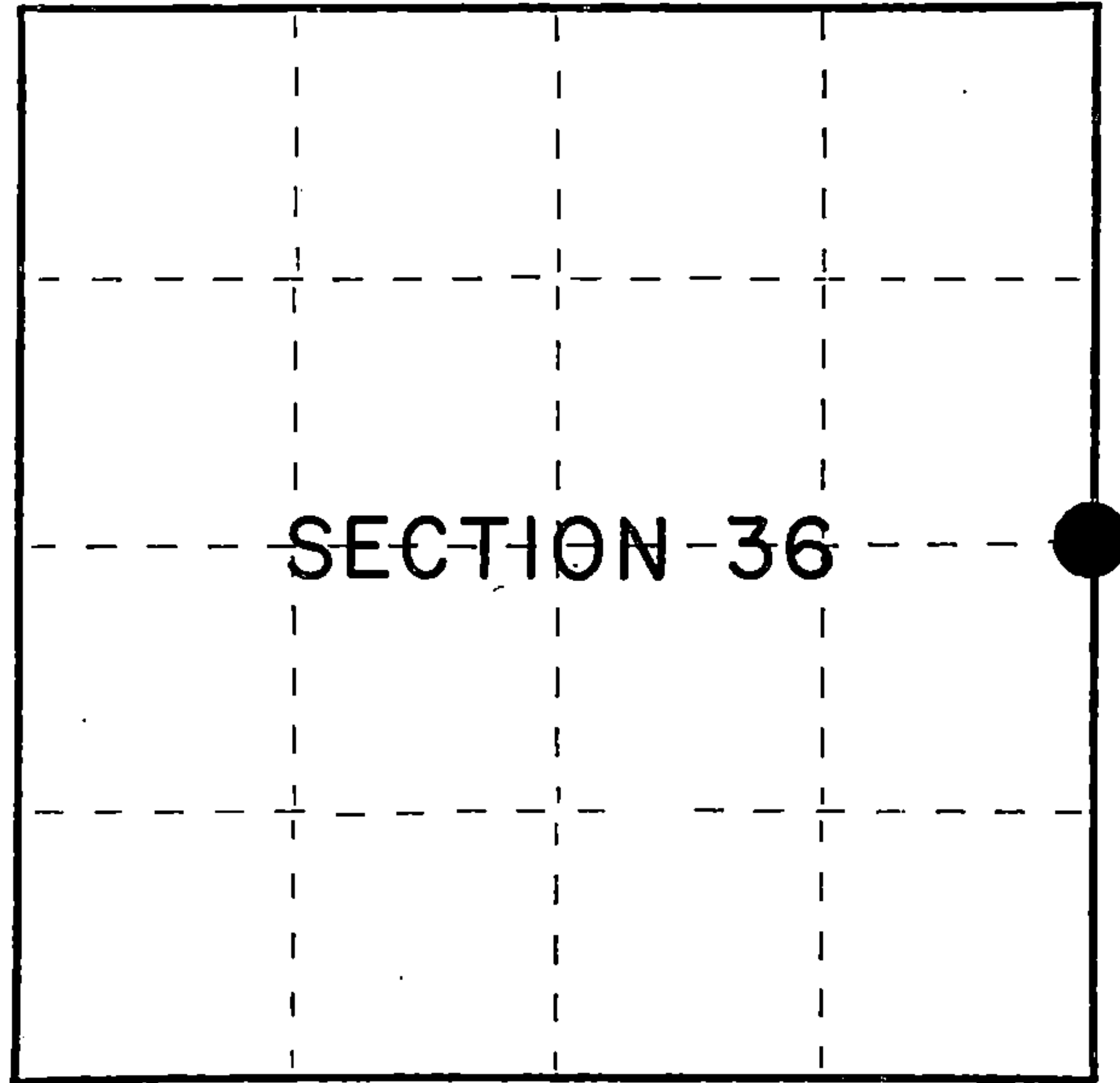
Description of corner evidence found:

A 2½" diameter aluminum pipe monument, with an aluminum cap stamped: T38N, R14E,
R15E, 1/4, S31, S36, S-498, 1977, Forest County. From which the following bear:

Maple	9"	N71°E	16.43 feet
Maple	6"	S 7°E	19.88 feet
Maple	10"	N49°E	39.65 feet

Description of monument and accessories I established to perpetuate the original location of this corner.

Steel sign post	NW	2.00 feet
-----------------	----	-----------



○ = Corner monument restored.

Dated at Hiles, Wis., this 11th day of March, 1985

Signature William B. Cochrane Title Land Surveyor Registration No. S-1107
(County Surveyor, Registered Land Surveyor, or other duly authorized official)

Office of Register of Deeds, County of Forest, I hereby certify that the within
instrument was filed in this office for record on the 24th day of April, 1985
at 1:00 o'clock P. M.

Paul Aschenbrenner
(Register of Deeds)

By _____ Deputy

FORM NO. 985-A

H.C. Miller Company
Milwaukee, Wisconsin

Stock No. 26273

Document Number **127911**

43814302000

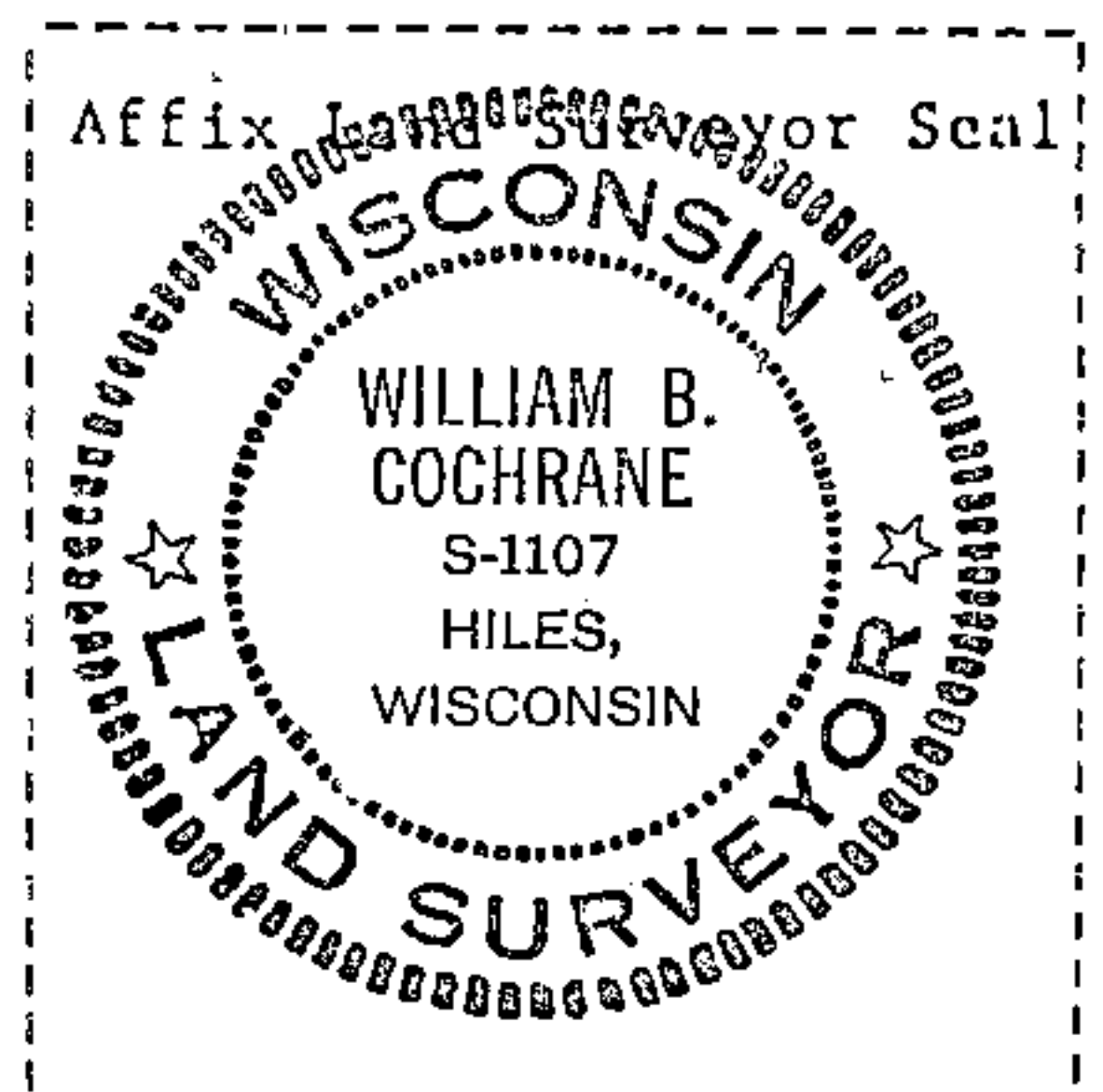
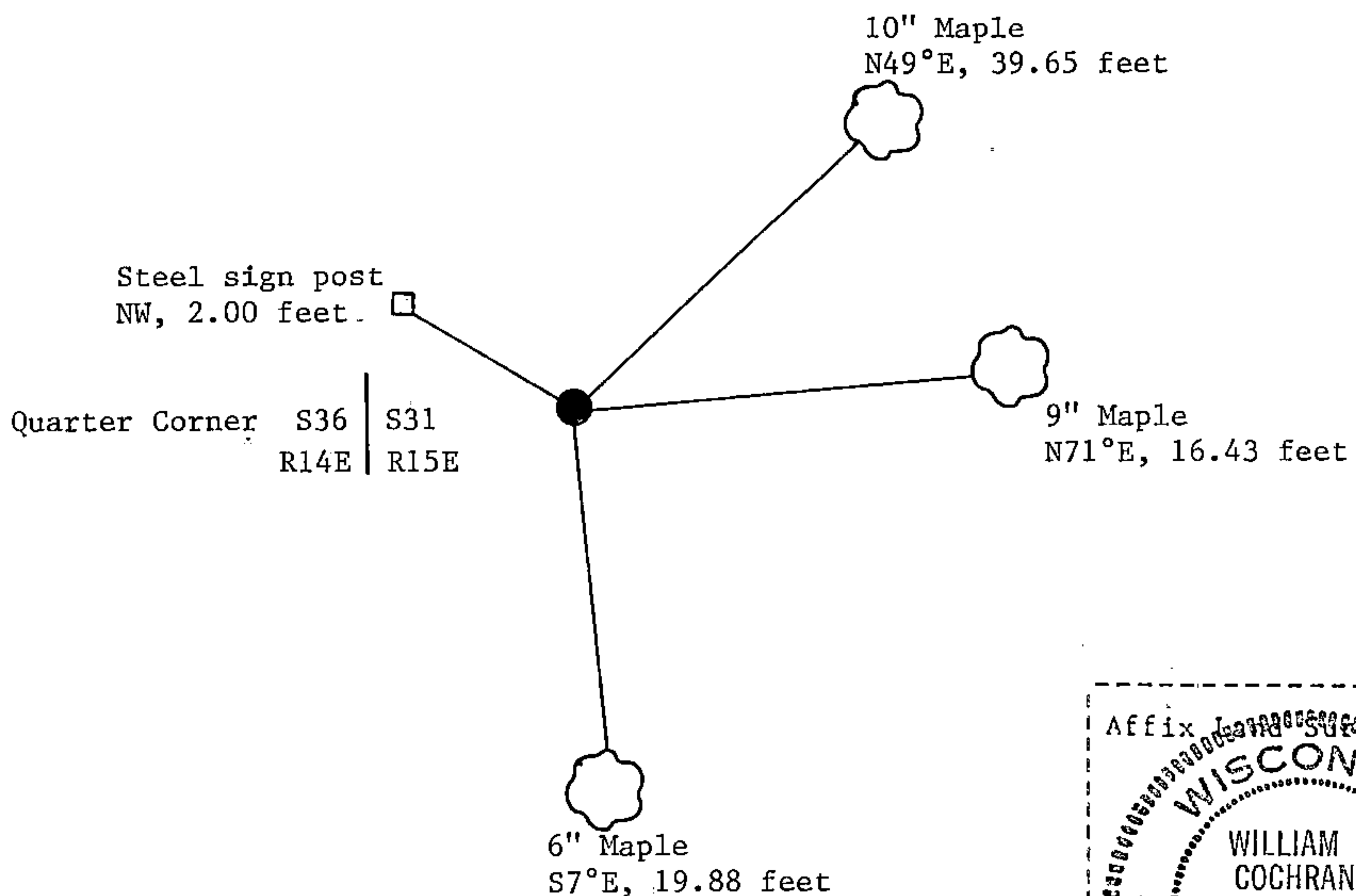
- (e) Describe any material discrepancy between the location of the corner as restored or reestablished and the location of that corner as previously restored or reestablished by distance and direction. Show the discrepancy on the plan view drawing under (d), above. Show the distances between the corner as previously restored or reestablished and (1) the corner as restored or reestablished, and (2) to at least 2 of the witness monuments shown on the drawing in (d), above.

See drawing below.

- (f) Was the corner restored through acceptance of (1) an obliterated evidence location, or, (2) a found perpetuated location?

Restored through acceptance of a found perpetuated location.

- (g&h) Was the corner reestablished through lost corner proportionate methods? If so, show the method, including the directions and distances to other public land survey corners used as evidence or used for proportioning in determining the corner location?



- (i) I, William B. Cochrane
(type or print name) certify that the corner location shown on this record was determined by me or under my direction and control and that this U.S. Public Land Survey Monument Record is correct and complete to the best of my knowledge and belief.

William B. Cochrane
Signature

March 11, 1985
Date