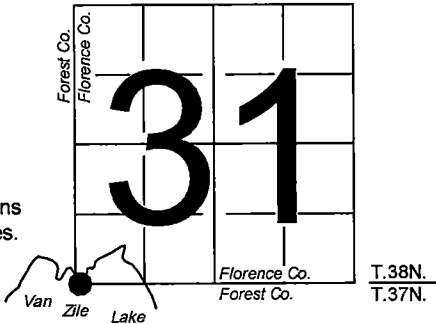


U.S. PUBLIC LAND SURVEY
MONUMENT RECORD

NOTE: This form is intended and designed to fulfill all requirements of Wisconsin Administrative Code, Chapter A-E 7.08 U.S. Public Land Survey Monument Record (3) (a-l)

A-E 7.08(3)(a) Identity of corner:
Meander Corner South line Section 31,
WEST SIDE of peninsula - Van Zile Lake
Township 38 North, Range 15 East
of the Fourth Principal Meridian,
Town of Fence, Florence County, Wisconsin

WISCRS - FOREST COUNTY
N: 626,164.835 USft (XXX,XXX.XXX)
E: 894,258.378 USft (XXX,XXX.XXX)
Datum: NAD83 (2011)
GNSS Method RTK
GNSS Control WISCORS VRS



The coordinate value shown has been verified by the average of two or more GPS observations at a markedly different time. Coordinates shown in parenthesis are previously published values.

A-E 7.08(3)(b)

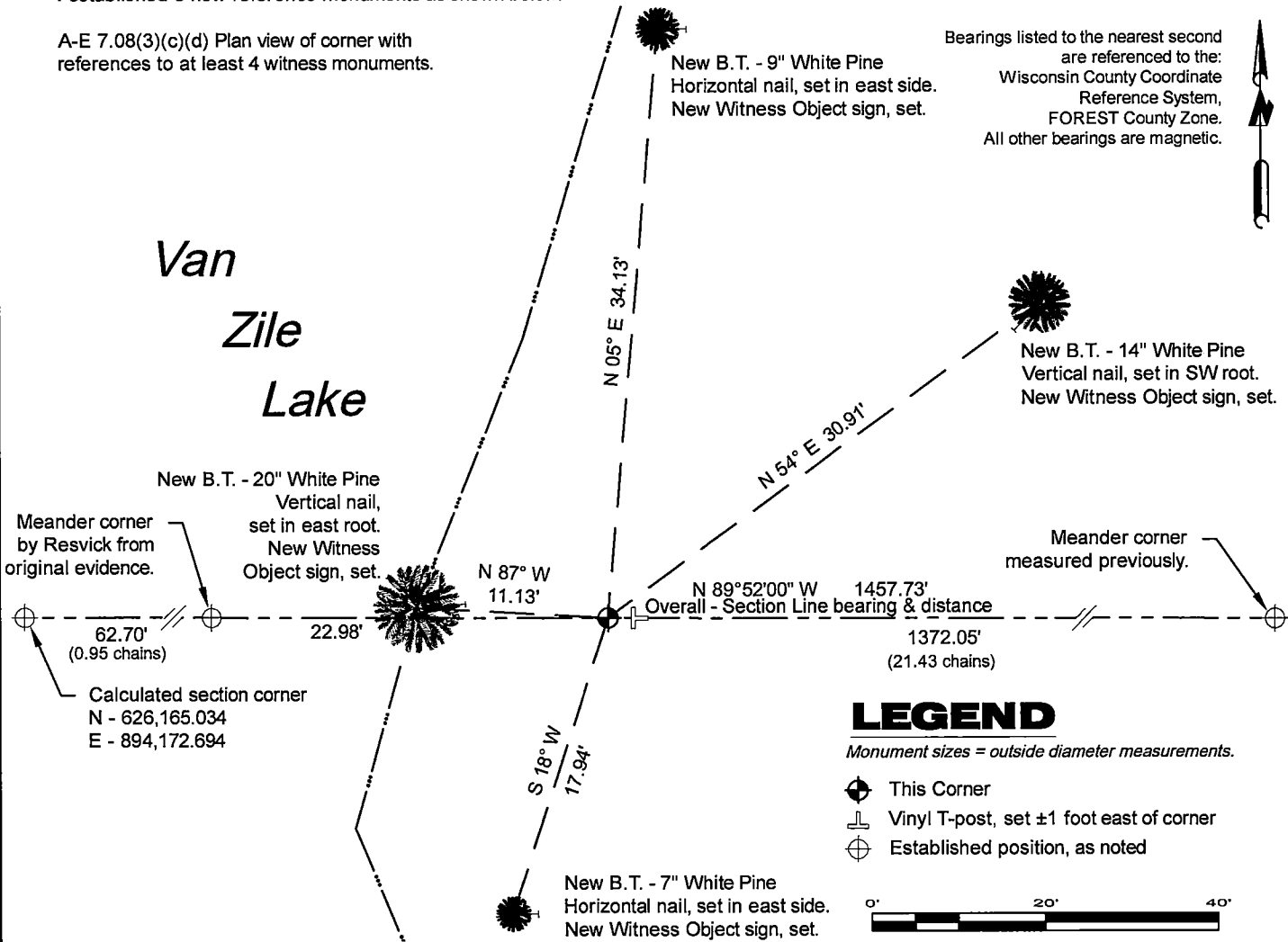
Original Surveyor: Artemas Curtis - October 1857
Tamarac 6 - N 46° E, 41 Links, Spruce 5 - S 77° E, 21 Links

See previous Certified Land Corner Restoration - A 1,2 - November 5, 1969 - Surveyor 802 - Jean F. Resvick - THENCE:

November 16, 2024 - In performing the 2024 - Forest County - "PLSS Corner Remonumentation and GPS Services" project, I found Resvick's meander corner on the west side of the peninsula. The monument was laying on the lake bed in ±16" of water. The bottom end of the monument was near a pile of stones that measured N86°W, ±10.22 feet from a 20" white pine that has traces of red paint in the bark. In 1969, Resvick set this monument from original evidence, and witnessed the corner with a white pine, 17 ins. diam. S86°E, 10.22 ft.. I accepted the pile of stones on the lake bed as a perpetuation of the original meander corner.

March 13, 2025 - I set a 1" diameter X 32.5" long aluminum pipe - drivable monument with a 3.25" diameter aluminum cap stamped to identify the corner location. The monument is on land, and set on a line between the pile of stones, and the meander corner on the east side of Van Zile Lake. The monument is ±14' from the edge of water, and is flush with grade. I established 3 new reference monuments as shown below.

A-E 7.08(3)(c)(d) Plan view of corner with references to at least 4 witness monuments.



A-E 7.08(3)(e) 1857 Surveyor set a post, 1969 Surveyor set a 2" inside diameter galvanized wrought iron pipe with brass cap stamped to identify corner. I set an aluminum pipe monument in 2025.

A-E 7.08(3)(f) I accept this monument in good faith as an ESTABLISHED WITNESS to the original corner.
A-E 7.08(3)(g)(h) This corner was not determined through lost-corner-proportionate methods.

A-E 7.08(3)(i) I, Jeffrey L. DeMuth, Professional Land Surveyor No. S-2656, hereby certify that the corner location on this record was determined by me or under my direction and control, and that this U.S. Public Land Survey Monument Record is correct and complete to the best of my knowledge, and belief.



SIGNATURE

March 14, 2025

DATE

43815310038

43815310038

21