

CERTIFIED LAND CORNER RESTORATION

State of Wisconsin

County of Forest

ss.

I, Jean F. Resvick, do hereby certify that on the 20th day of October, 1972, I found evidence of the Northwest Section corner of Section 4 Township 37 North, Range 15 East, Fourth Principal Meridian, as described hereon; and that from this evidence I established a new monument and accessories as described hereon to perpetuate the original location of this corner:

Description of original monument and accessories and subsequent restorations:

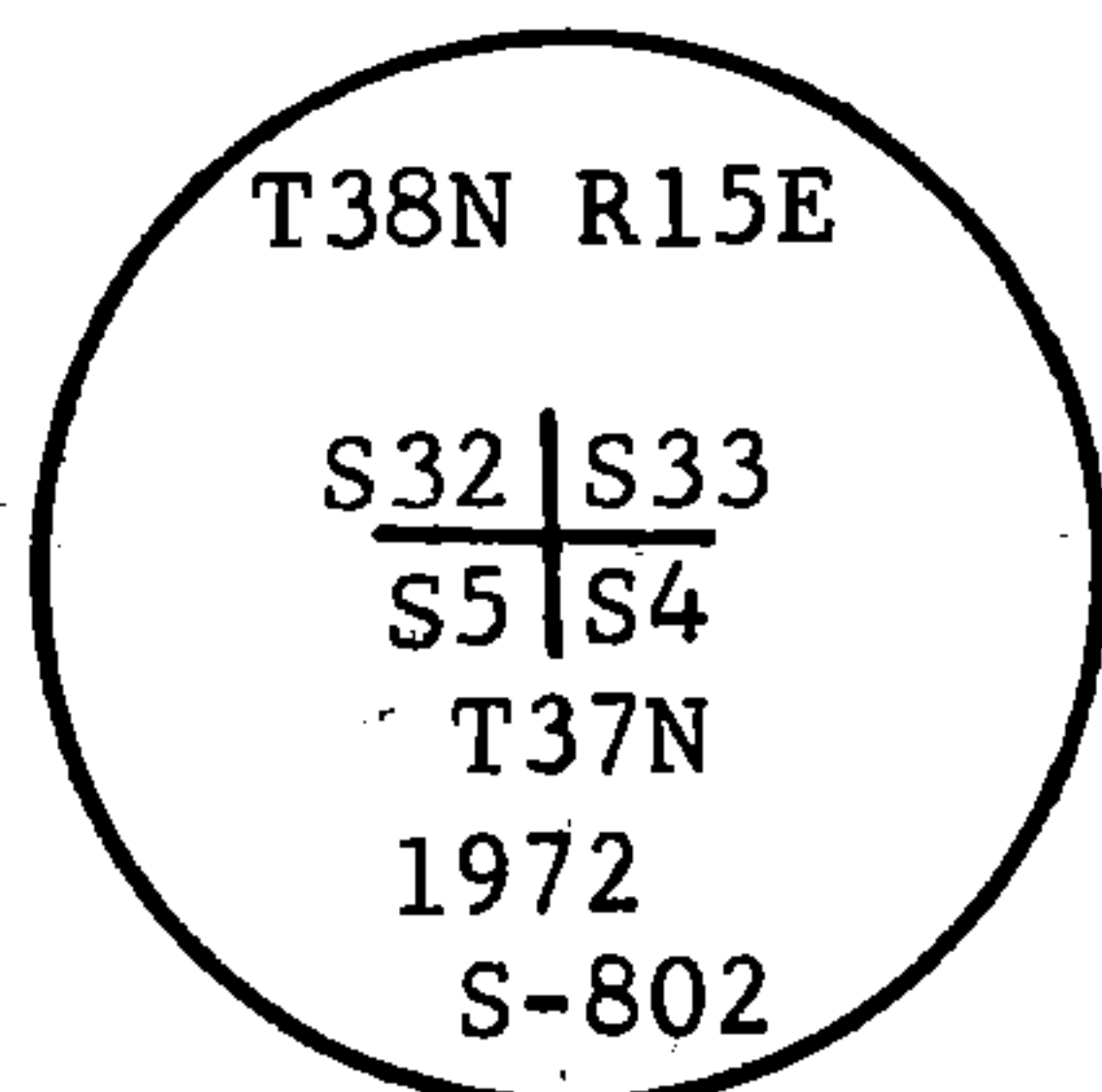
Surveyed in 1857 by Artemas Curtis
80.00 chains west between sec. 4 and 33 set post.
Tamarack 10, S84°10'W, 605 lks.
Tamarack 12, N89°30'W, 612 lks.
East, 9.41 chains, W. pine 8 inches
East, 9.41 chains leave swamp bears NW, SE
West, 8.00 chains leave swamp bears SE

Description of corner evidence found:

Tamarack snag, scribing and reversed impression readable in both upper and lower blaze. Tamarack fallen, blazed but no scribing remains. White pine stump on east edge of swamp. 2x2 spruce post about 10 years old, rotten off at ground. Bearing and distances as recorded for bearing trees are impossible from remains found. The original bearings being recorded to the minute I assume that they were computed from offsets from the 6 chain mark west of corner on line. By assuming that the distance should have been 6 chains minus 12 lks. not plus and that the offset to the south was 37 lks. not 62 lks. or a 25 lks. error the two position from the two, bearing trees become a common point agreeing with the swamp calls East and West.

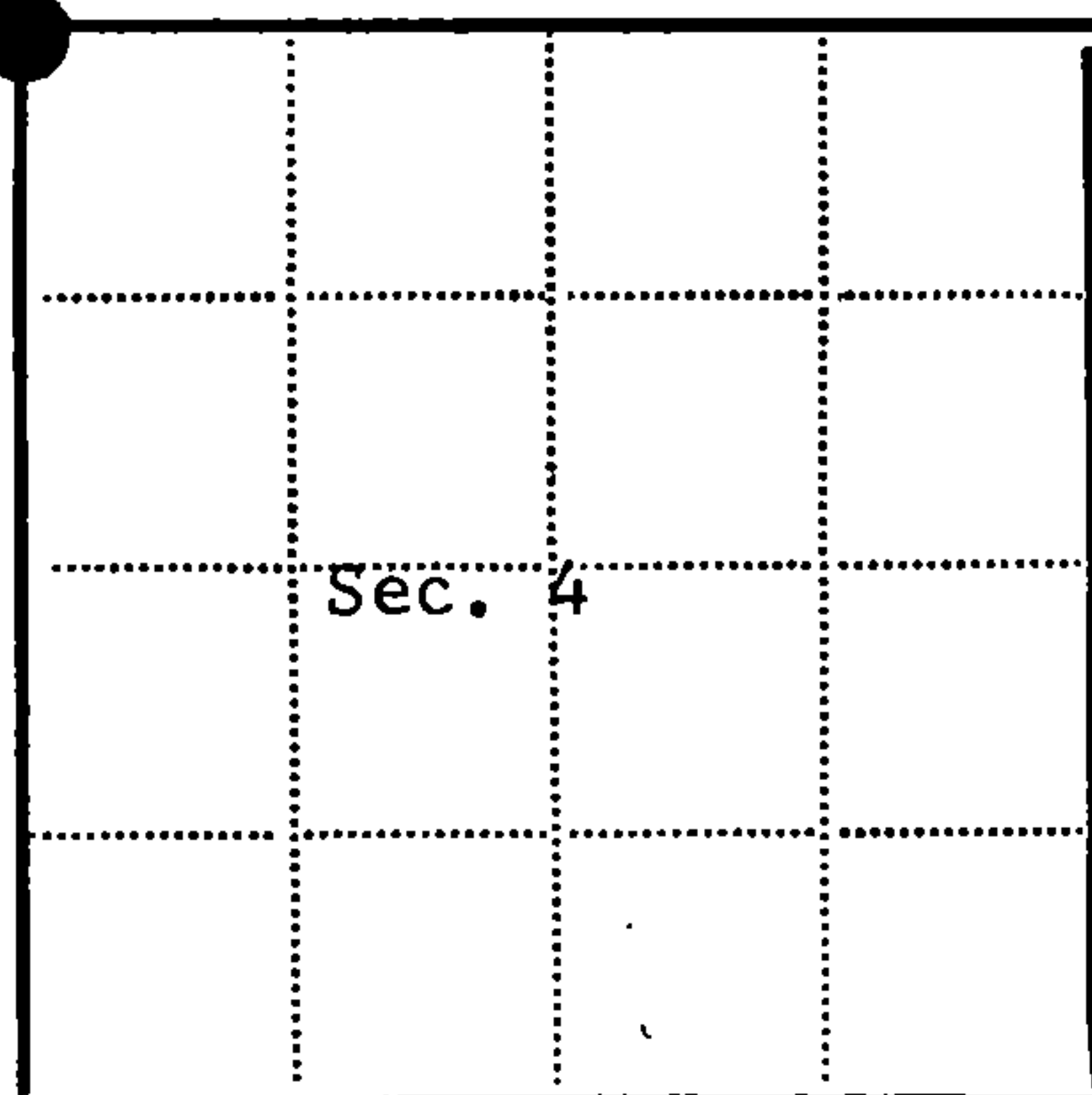
Description of monument and accessories I established to perpetuate the original location of this corner:

At a point S89°30'E, 588 lks. and N86°30'E, 605 lks. from the bearing tree remains found and 9.4 chains, west of white pine stump on edge of swamp set a 2 inch inside diameter, galvanized iron pipe, 5 feet long, filled with concrete with brass cap stamped:



From which the following new blazed scribed bearing trees bear:

Black Spruce 3, N22E, 49.17 ft.
Black Spruce 3, N82E, 36.29 ft.
Black Spruce 3, S33W, 95.86 ft.
Black Spruce 4, N33W, 90.81 ft.
Set steel sign post on north side of mound
No trees in SE quadrant.



● = Corner monument restored

□ =

Resident witnesses

Dated at Rhineland Wisconsin, this 20th day of October, 1972.

Signature, Jean F. Resvick Title, Land Surveyor
(County Surveyor, Registered Land Surveyor, or other duly authorized official)

Surveyors Registration No.

DOCUMENT NUMBER

104439

Office of Register of Deeds County of Forest

I hereby certify that the within instrument was filed in this office for record on the 13th day of November, 1973, and was filed in Book No. of County Records.

Signature, Eugene Stegman Title, Register of Deeds

Township 37 North, Range 15 East, Section 4, Index No. A-9, Page No.

43815320000

A
9

U.S. PUBLIC LAND SURVEY MONUMENT RECORD

Index No. **A-9**

State of Wisconsin }
County of Forest } ss.

I William B. Cochrane, do hereby
certify that on the 27th day
of February, 1985, I found
evidence of the Northeast Section
corner of Section 5
Township 37, North, Range
15 East, Fourth Principal Meridian,
as described hereon; and that from this evidence
I established a new monument and accessories
as described hereon to perpetuate the original
location of this corner.

Resident witnesses:

David Brownell

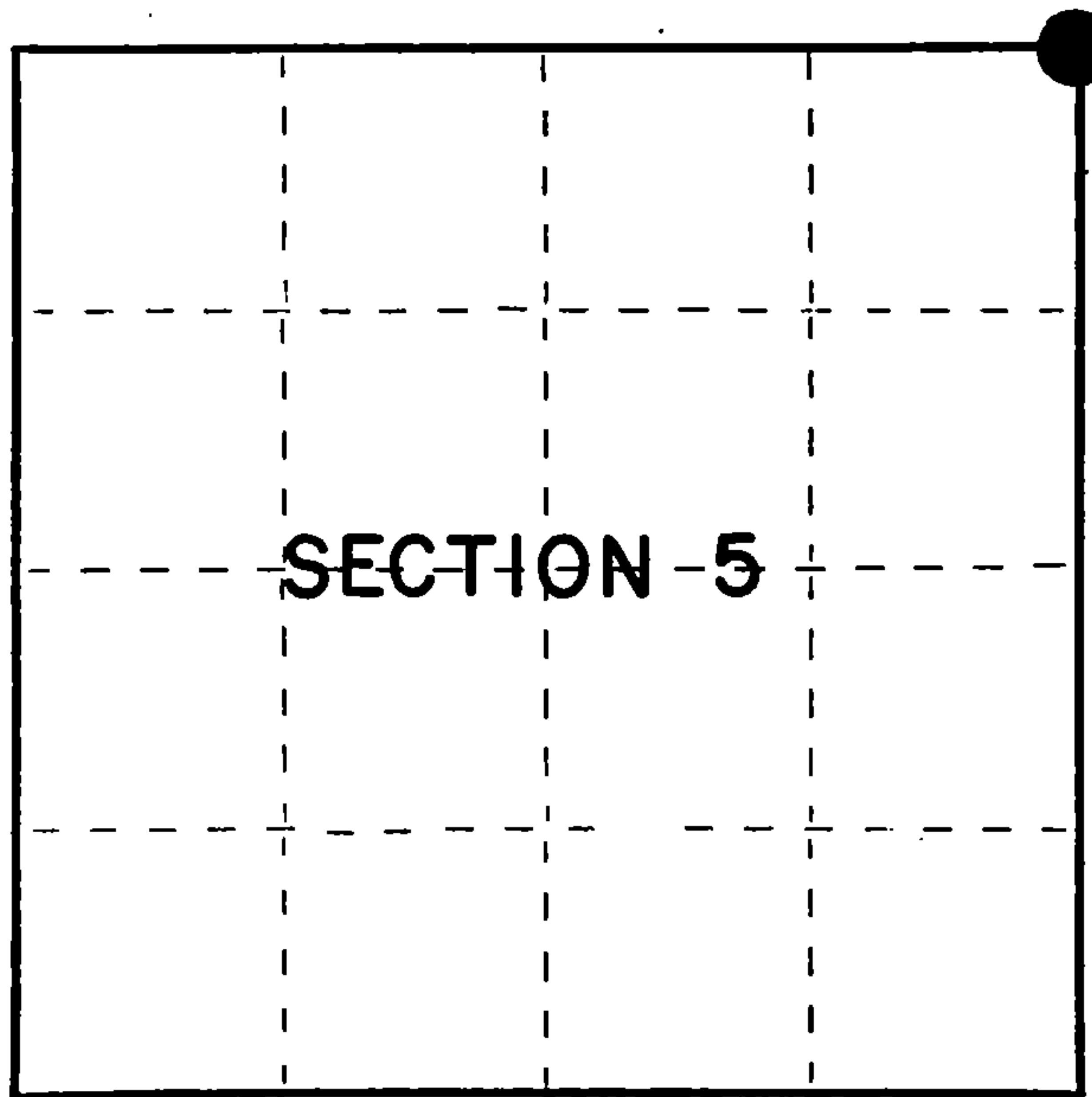
History of original corner establishment:
Original Government Survey in 1857 by Artemas Curtis. In 1972, Jean Resvick, a Land Surveyor
with the U.S. Forest Service, found original bearing tree evidence. From evidence, set a
2" diameter galvanized iron pipe, 5 feet long, with a brass cap stamped: T38N R15E, S4, S5,
S32, S33, T37N, 1972, S-802. From which the following bear:

B. Spruce	3"	N22°E	49.17 feet
B. Spruce	3"	N82°E	36.29 feet
B. Spruce	3"	S33°W	95.86 feet
B. Spruce	4"	N33°W	90.81 feet

Description of corner evidence found:
Monument as described and in place, from which the following bear:

B. Spruce (Dead)	4"	N22°E	49.17 feet
B. Spruce	4"	N82°E	36.29 feet
B. Spruce	4"	S33°W	95.86 feet
B. Spruce	5"	N33°W	90.81 feet

Description of monument and accessories I established to perpetuate the original location of this corner.
Steel Sign Post NW 0.50 feet



○ = Corner monument restored.

Dated at Hiles, Wis., this 26th day of March, 1985

Signature William B. Cochrane Title Land Surveyor Registration No. S-1107
(County Surveyor, Registered Land Surveyor, or other duly authorized official)

Office of Register of Deeds, County of Forest, I hereby certify that the within
instrument was filed in this office for record on the 24th day of April, 1985
at 1:00 o'clock P. M.

Paul Aschenbrenner
(Register of Deeds)

By _____ Deputy

FORM NO. 985-A
H.C. Muller Company
ST. LOUIS, MO.

Stock No. 26273

Document Number **127864**

4381532 0000

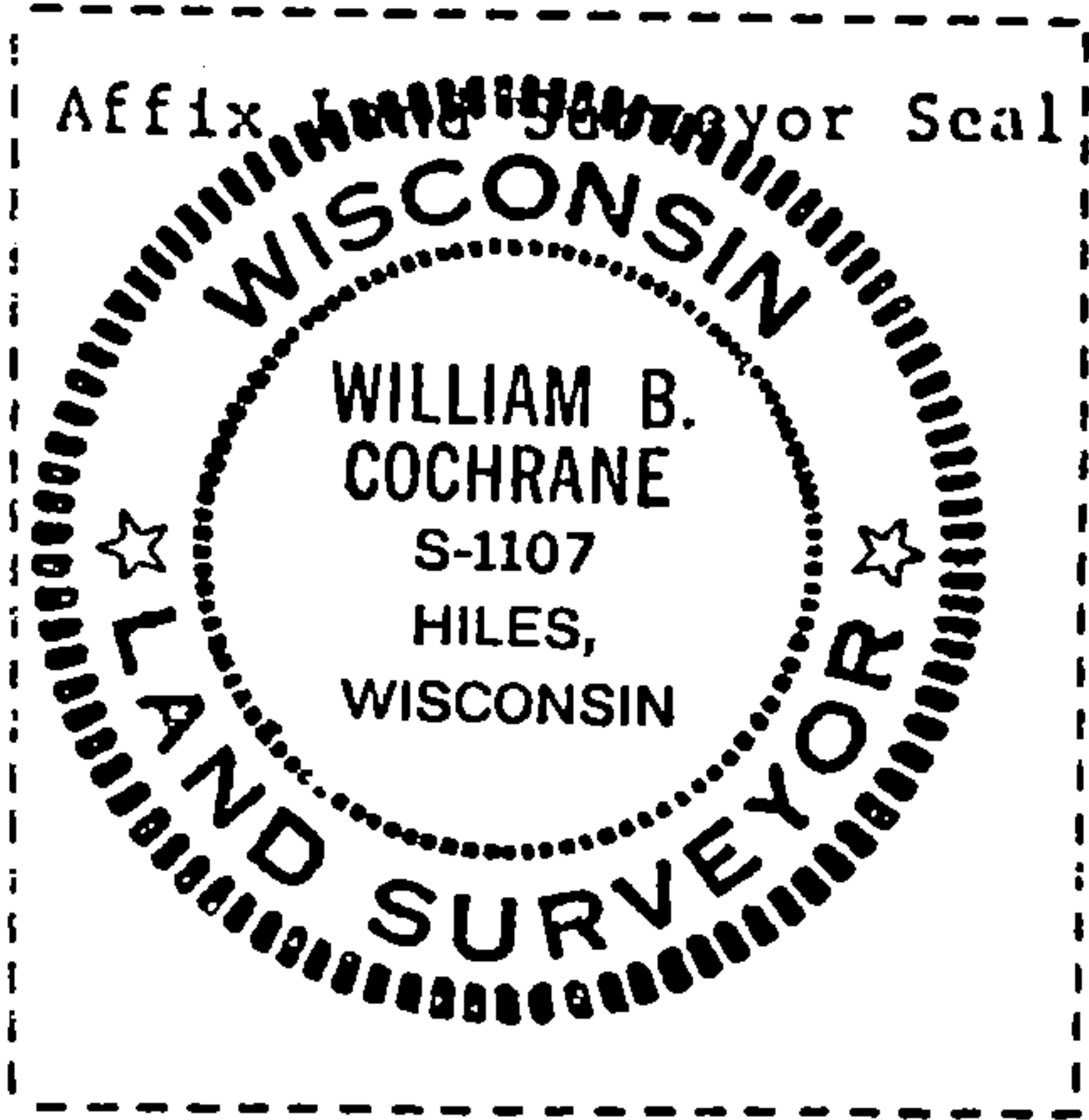
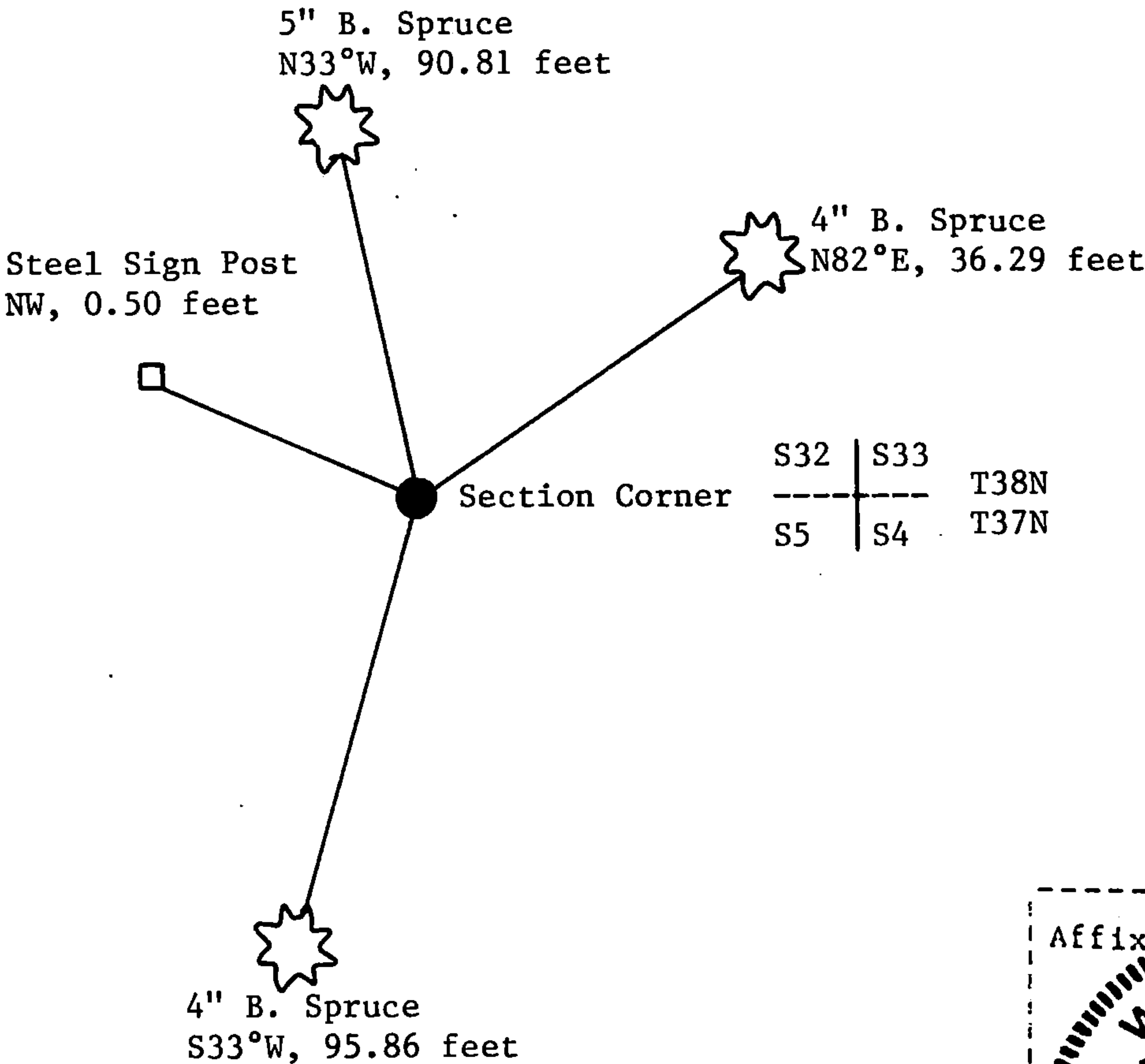
(e) Describe any material discrepancy between the location of the corner as restored or reestablished and the location of that corner as previously restored or reestablished by distance and direction. Show the discrepancy on the plan view drawing under (d), above. Show the distances between the corner as previously restored or reestablished and (1) the corner as restored or reestablished, and (2) to at least 2 of the witness monuments shown on the drawing in (d), above.

See drawing below.

(f) Was the corner restored through acceptance of (1) an obliterated evidence location, or, (2) a found perpetuated location?

Restored through acceptance of a found perpetuated location.

(g&h) Was the corner reestablished through lost corner proportionate methods? If so, show the method, including the directions and distances to other public land survey corners used as evidence or used for proportioning in determining the corner location?



(i) I, William B. Cochrane
(type or print name) certify that the corner location shown on this record was determined by me or under my direction and control and that this U.S. Public Land Survey Monument Record is correct and complete to the best of my knowledge and belief.

William B. Cochrane
Signature

March 26, 1985
Date