

U.S. PUBLIC LAND SURVEY MONUMENT RECORD

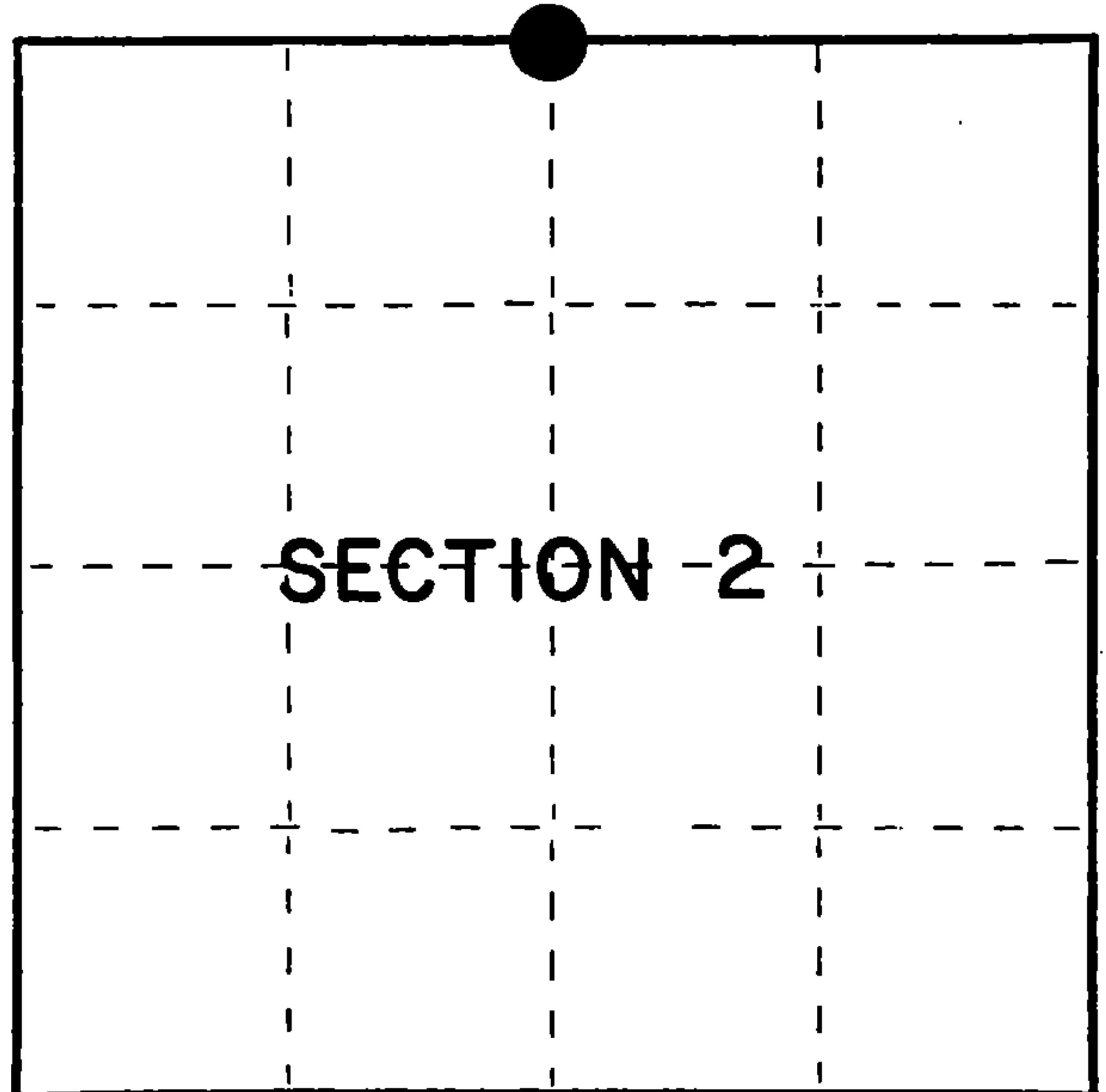
Index No. **A-19**

State of Wisconsin }
County of Forest } ss.

I William B. Cochran, do hereby
certify that on the 15th day
of September, 1983, I found
evidence of the North Quarter
corner of Section 2
Township 37, North, Range
15 East, Fourth Principal Meridian,
as described hereon; and that from this evidence
I established a new monument and accessories
as described hereon to perpetuate the original
location of this corner.

Resident witnesses:

Tony Tillman



○ = Corner monument restored.

History of original corner establishment:
Original Government Survey in 1857 by Artemas Curtis. West Between sections
2 and 35, 40.00 chains, set quarter corner post to sections 2 and 35. From
which the following bear:

Y. Pine	16"	N18°E	41 lks.
Y. Pine	16"	S81°E	65 lks.

Description of corner evidence found:
6"x6" squared post, from which the following bear:
Y. Pine, stump, N18°E 41 lks.

I accept the location of the 6"x6" squared post as the original corner position,
in concurrence with original B.T. evidence.

Description of monument and accessories I established to perpetuate the original location of this corner.
In place of 6"x6" squared post, set a 2½" diameter aluminum pipe monument, 5 feet
long, with an aluminum cap stamped: T38N R15E, 1/4, S2, S35, T37N, 1983, S-1107.
From which the following bear:

B. Spruce	7"	N24°E,	41.84 feet
B. Spruce	5"	S82°E	11.25 feet
B. Spruce	5"	S28°W	34.76 feet
B. Spruce	4"	N48°W	26.50 feet
Steel sign post		West	1.00 feet

Dated at Hiles, Wis., this 11th day of March, 1985

Signature William B. Cochran Title Land Surveyor Registration No. S-1107
(County Surveyor, Registered Land Surveyor, or other duly authorized official)

Office of Register of Deeds, County of Forest, I hereby certify that the within
instrument was filed in this office for record on the 24th day of April, 1985
at 1:00 o'clock P. M.

Paul Aschenbrenner
(Register of Deeds)

By _____ Deputy

FORM NO. 985-A

H.C. Miller Company

Stock No. 26273

Document Number **127009**

43815350020

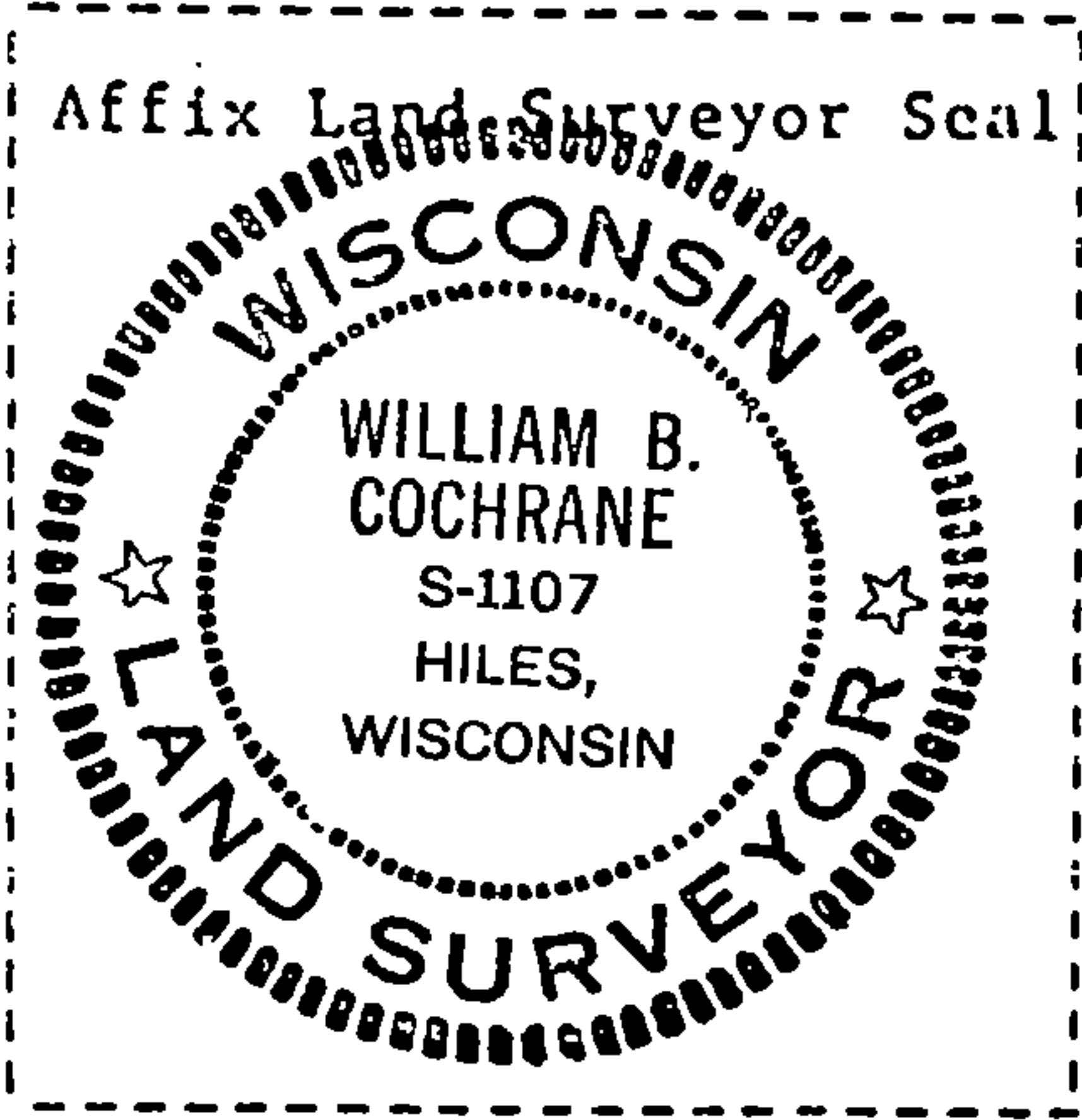
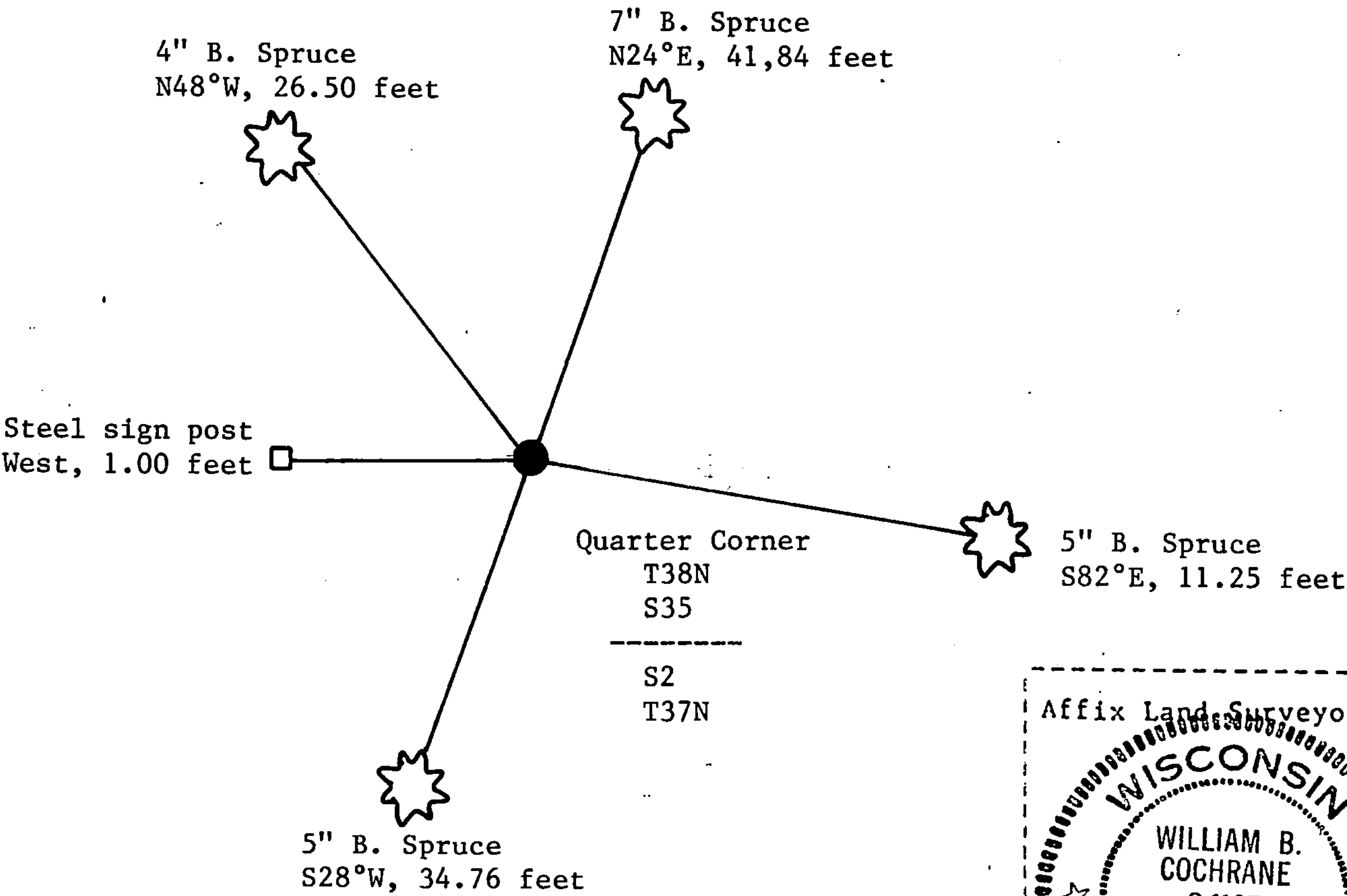
(e) Describe any material discrepancy between the location of the corner as restored or reestablished and the location of that corner as previously restored or reestablished by distance and direction. Show the discrepancy on the plan view drawing under (d), above. Show the distances between the corner as previously restored or reestablished and (1) the corner as restored or reestablished, and (2) to at least 2 of the witness monuments shown on the drawing in (d), above.

See drawing below.

(f) Was the corner restored through acceptance of (1) an obliterated evidence location, or, (2) a found perpetuated location?

Restored from original evidence.

(g&h) Was the corner reestablished through lost corner proportionate methods? If so, show the method, including the directions and distances to other public land survey corners used as evidence or used for proportioning in determining the corner location?



(i) I, William B. Cochrane
(type or print name) certify that the corner location shown on this record was determined by me or under my direction and control and that this U.S. Public Land Survey Monument Record is correct and complete to the best of my knowledge and belief.

William B. Cochrane March 11, 1985
Signature Date