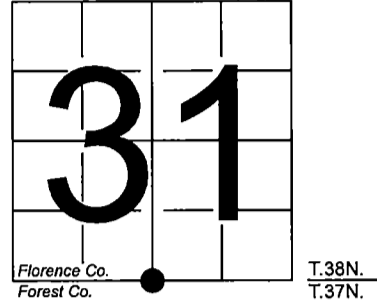


# U. S. PUBLIC LAND SURVEY MONUMENT RECORD

NOTE: This form is intended and designed to fulfill all requirements of Wisconsin Administrative Code, Chapter A-E 7.08 U.S. Public Land Survey Monument Record (3) (a-i)

A-E 7.08(3)(a) Identity of corner:  
South 1/4 Corner Section 31,  
Township 38 North, Range 16 East  
of the Fourth Principal Meridian,  
Town of Fence, Florence County,  
Wisconsin

WISCRS - FOREST COUNTY  
N: 626,134.449 USft (XXX,XXX.XXX)  
E: 929,110.319 USft (XXX,XXX.XXX)  
Datum: NAD83 (2011)  
GNSS Method RTK  
GNSS Control WISCORS VRS



The coordinate value shown has been verified by the average of two or more GPS observations at a markedly different time. Coordinates shown in parenthesis are previously published values.

A-E 7.08(3)(b)

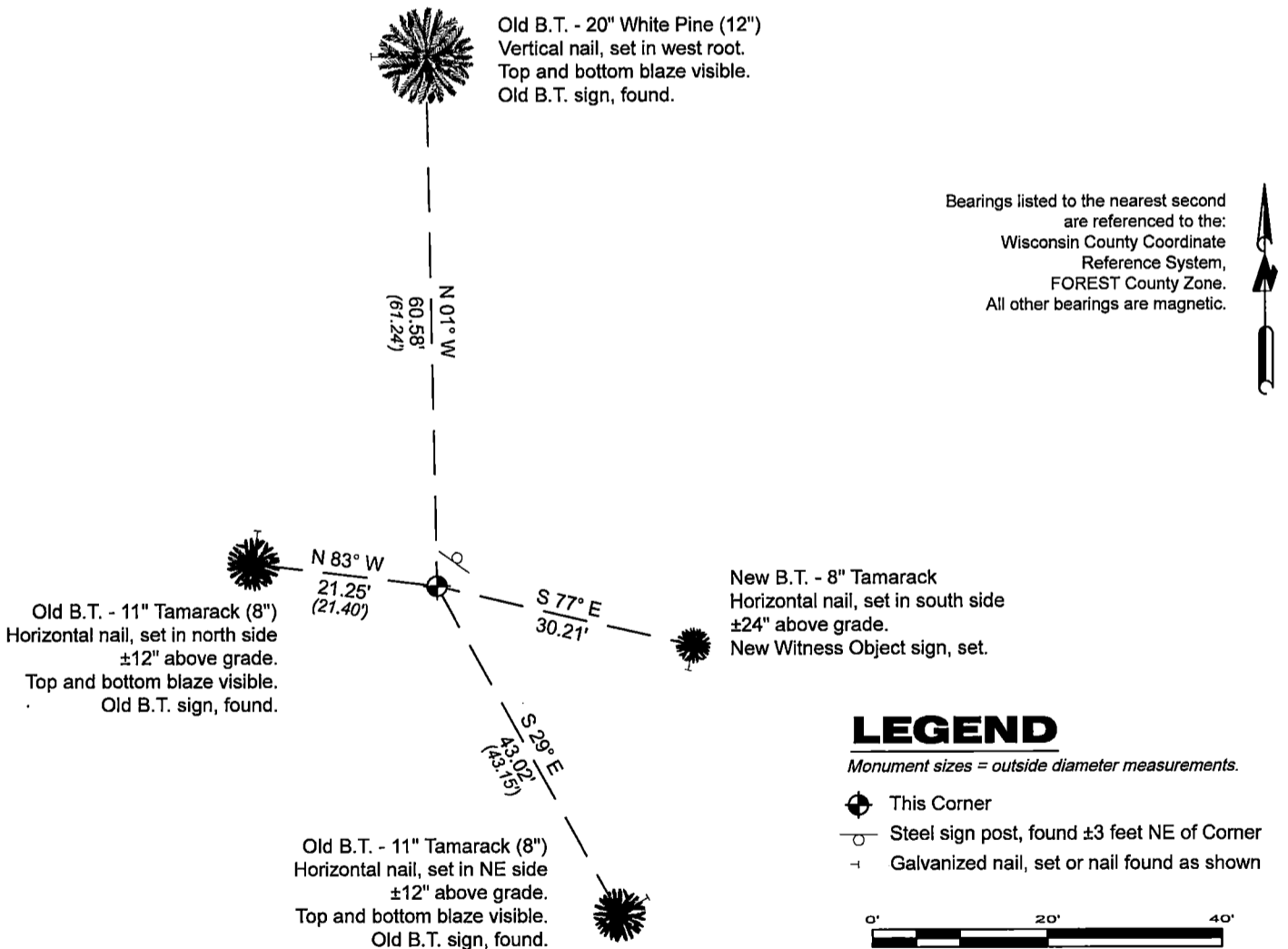
Original Surveyor: Artemas Curtis - September 1857 to October 1857  
Tamarac 10 - N 38° E, 22 Links, Tamarac 8 - S 19° W, 26 Links

See Plat of Survey for Certified Land Corner Restoration & Establishment - C0991 (Florence Co.) - 1986 - Surveyor 1634  
Gary Lee Pisoni - THENCE:

- November 2010 - Surveyor 2402 - Steven Applekamp - indicates this position as "USFS mon" on Florence Co. record Map M0041.

April 22, 2024 - In performing the 2024 - Forest County - "PLSS Corner Remonumentation and GPS Services" project, I found a 2.25" diameter aluminum pipe monument with a 3.25" diameter aluminum cap stamped to identify the corner. The monument is in a spruce swamp, and extends ±12" above grade. I also found 3 of Pisoni's bearing trees alive and in good condition. I established 1 new reference monuments as shown below.

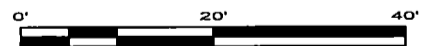
A-E 7.08(3)(c)(d) Plan view of corner with references to at least 4 witness monuments.



## LEGEND

Monument sizes = outside diameter measurements.

- This Corner
- Steel sign post, found ±3 feet NE of Corner
- Galvanized nail, set or nail found as shown

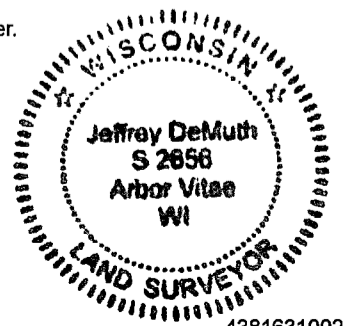


A-E 7.08(3)(e) 1857 Surveyor set a post, 1986 surveyor found a 2 1/2" aluminum pipe monument, 2010 surveyor found a monument. In 2024, I found a 2.25" diameter aluminum pipe monument with a 3.25" diameter aluminum cap stamped to identify the corner.

A-E 7.08(3)(f) I accept this monument in good faith as a FOUND PERPETUATED LOCATION of the corner.  
A-E 7.08(3)(g)(h) This corner was not determined through lost-corner-proportionate methods.

A-E 7.08(3)(i) I, Jeffrey L. DeMuth, Professional Land Surveyor No. S-2656, hereby certify that the corner location on this record was determined by me or under my direction and control, and that this U.S. Public Land Survey Monument Record is correct and complete to the best of my knowledge, and belief.

April 29, 2024  
DATE



43816310020

43816310020

Z3