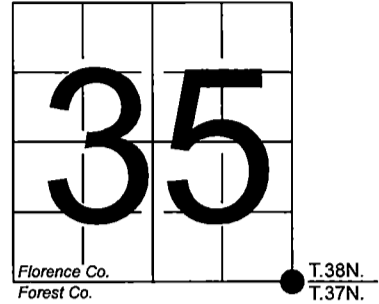


U. S. PUBLIC LAND SURVEY MONUMENT RECORD

NOTE: This form is intended and designed to fulfill all requirements of Wisconsin Administrative Code, Chapter A-E 7.08 U.S. Public Land Survey Monument Record (3) (a-i)

A-E 7.08(3)(a) Identity of corner:
Southeast Corner Section 35,
Township 38 North, Range 16 East
of the Fourth Principal Meridian,
Town of Fence, Florence County,
Wisconsin

WISCRS - FOREST COUNTY
N: 626,119.767 USft (XXX,XXX.XXX)
E: 952,870.254 USft (XXX,XXX.XXX)
Datum: NAD83 (2011)
GNSS Method RTK
GNSS Control WISCORS VRS



The coordinate value shown has been verified by the average of two or more GPS observations at a markedly different time. Coordinates shown in parenthesis are previously published values.

A-E 7.08(3)(b)

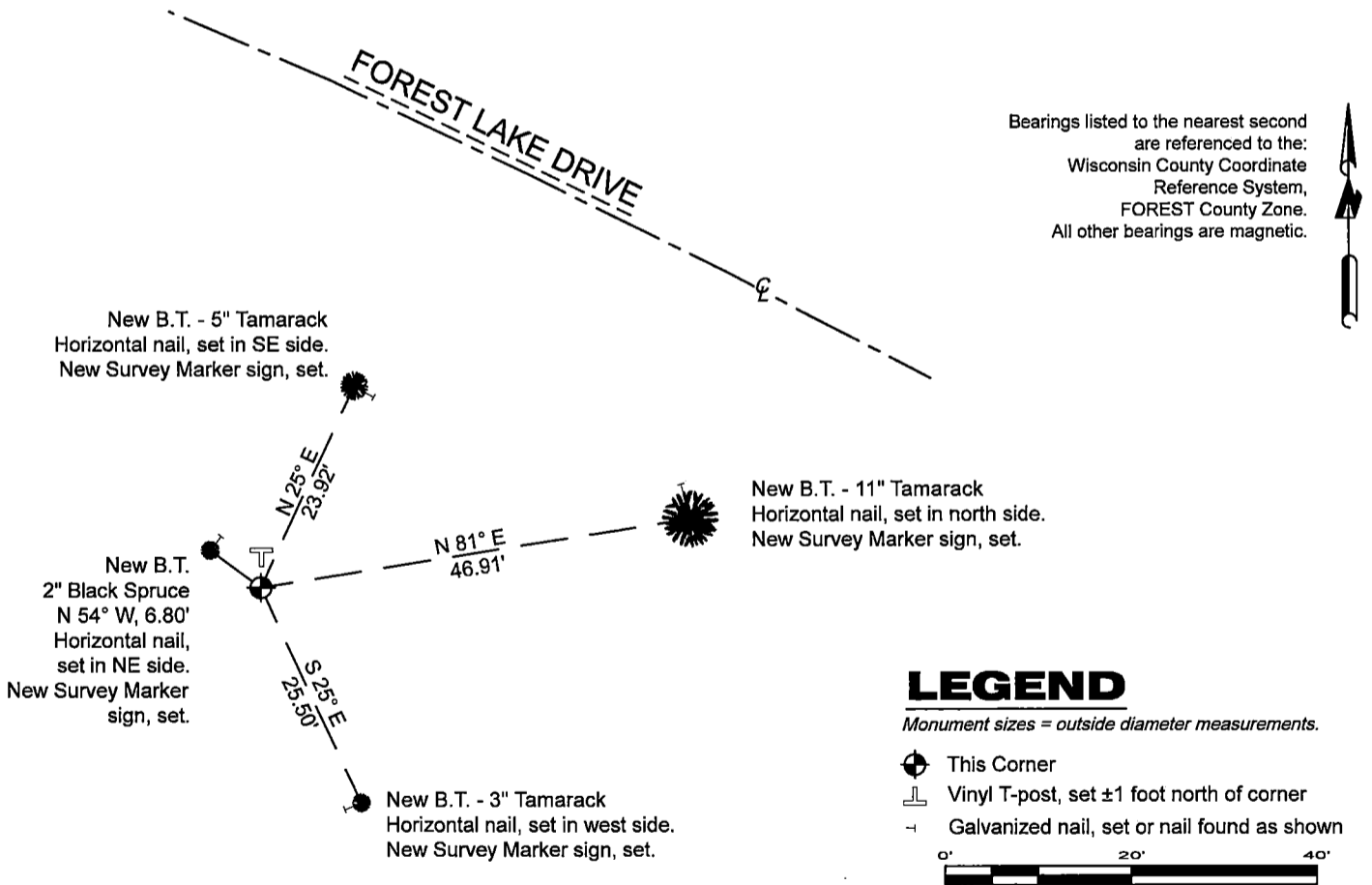
Original Surveyor: Artemas Curtis - September 1857 to October 1857
Tamarac 6 - N 30° W, 31 Links, Tamarac 10 - N 35° E, 56 Links, Tamarac 6 - S 80° E, 92 Links

THENCE:

- December 18, 1990 - Surveyor 1394 - Norman A. Harrison - indicates this position as "2" i.p." on Florence Co. Assessor's Plat No.2.
- August 7, 2014 - Surveyor 2402 - Steven Applekamp - indicates this position as "fnd. 2" pipe" on Forest Co. record Map #371601-20141106.

February 27, 2024 - In performing the 2024 - Forest County - "PLSS Corner Remonumentation and GPS Services" project, I found a 2" diameter iron pipe in a tamarack / spruce marsh. The monument is ±53' southwest of the centerline of Forest Lake Drive, and is flush with grade. I established 4 new reference monuments as shown below.

A-E 7.08(3)(c)(d) Plan view of corner with references to at least 4 witness monuments.

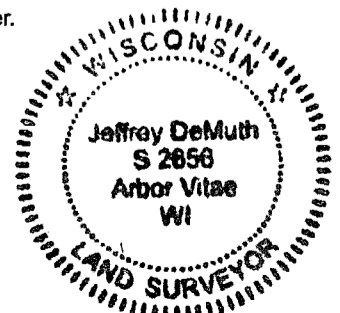


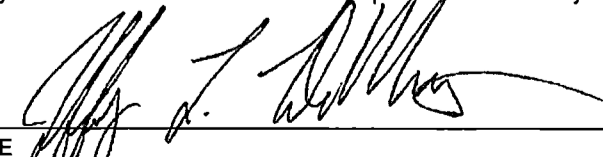
A-E 7.08(3)(e) 1857 Surveyor set a post, 1990 & 2014 Surveyors found a 2" iron pipe. In 2024, I found a 2" diameter iron pipe.

A-E 7.08(3)(f) I accept this monument in good faith as a FOUND PERPETUATED LOCATION of the corner.

A-E 7.08(3)(g)(h) This corner was not determined through lost-corner-proportionate methods.

A-E 7.08(3)(i) I, Jeffrey L. DeMuth, Professional Land Surveyor No. S-2656, hereby certify that the corner location on this record was determined by me or under my direction and control, and that this U.S. Public Land Survey Monument Record is correct and complete to the best of my knowledge, and belief.




SIGNATURE _____ DATE April 17, 2024

43816350000

43816350000

221