

Stock No. 26273

DOCUMENT NUMBER

137021

## U.S. PUBLIC LAND SURVEY MONUMENT RECORD

Index No. T-1

State of Wisconsin }  
County of Forest } ss.

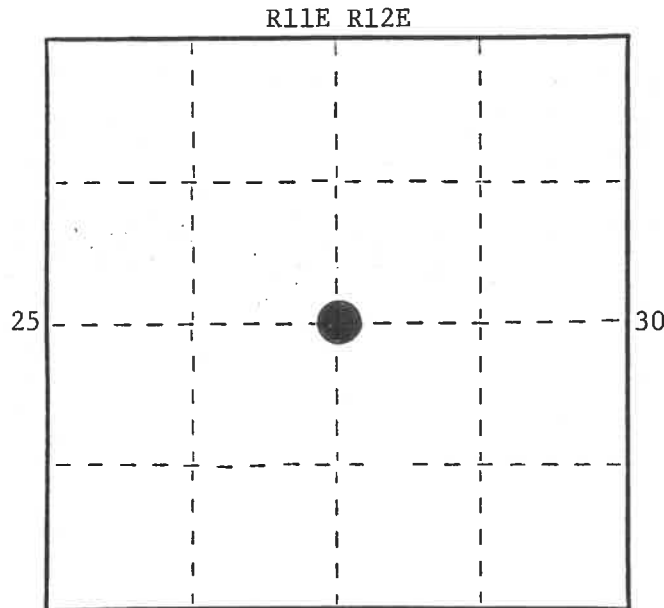
I, Milo E. Stefan, do hereby  
certify that on the 3rd day  
of October, 1988, I found  
evidence of the quarter  
corner of Sections 25/30  
Township 39  
11 East, North, Range  
as described hereon; and that from this evidence  
I established a new monument and accessories  
as described hereon to perpetuate the original  
location of this corner.

Resident witnesses:

Jeanne M. Stefan

Jeffrey L. Kennedy

Myron L. Smith



○ = Corner monument restored.

History of original corner establishment: By Alfred Millard in 1858.

1941 - Hugh Crawford restored this corner from remains of the original BTs.

He set a GLO brass cap in a 6" x 24" concrete monument and made two BTs:

5" Spruce, N5°E, 71 links (46.86') -

3" Spruce, N54 1/4°W, 21 links (13.86')

Description of corner evidence found:

A 6" x 24" concrete monument.

Decayed Spruce stump, N5°E, 46.8'

Decayed Spruce stump, N54°W, 13.9'

Description of monument and accessories I established to perpetuate the original location of this corner.

We made four new BTs and set steel sign post:

10" Tamarack, S79°E, 55.17'

8" Tamarack, S5°E, 28.37'

10" Tamarack, S45°W, 34.51'

6" Black Spruce, N3°E, 13.49'

6' Steel Sign Post, Southwest, 1.5'

Dated at Rhinelander, Wis., this 15th day of November, 1988

Signature Milo E. Stefan Title Land Surveyor Registration No. S-1558  
(County Surveyor/Registered Land Surveyor, or other duly authorized official)Office of Register of Deeds, County of Forest, I hereby certify that the within  
instrument was filed in this office for record on the 7th day of March, 1989  
at 9:55 o'clock A. M.

Paul Aschenbrenner

(Register of Deeds)

By

Sandra L. Deddo

Deputy

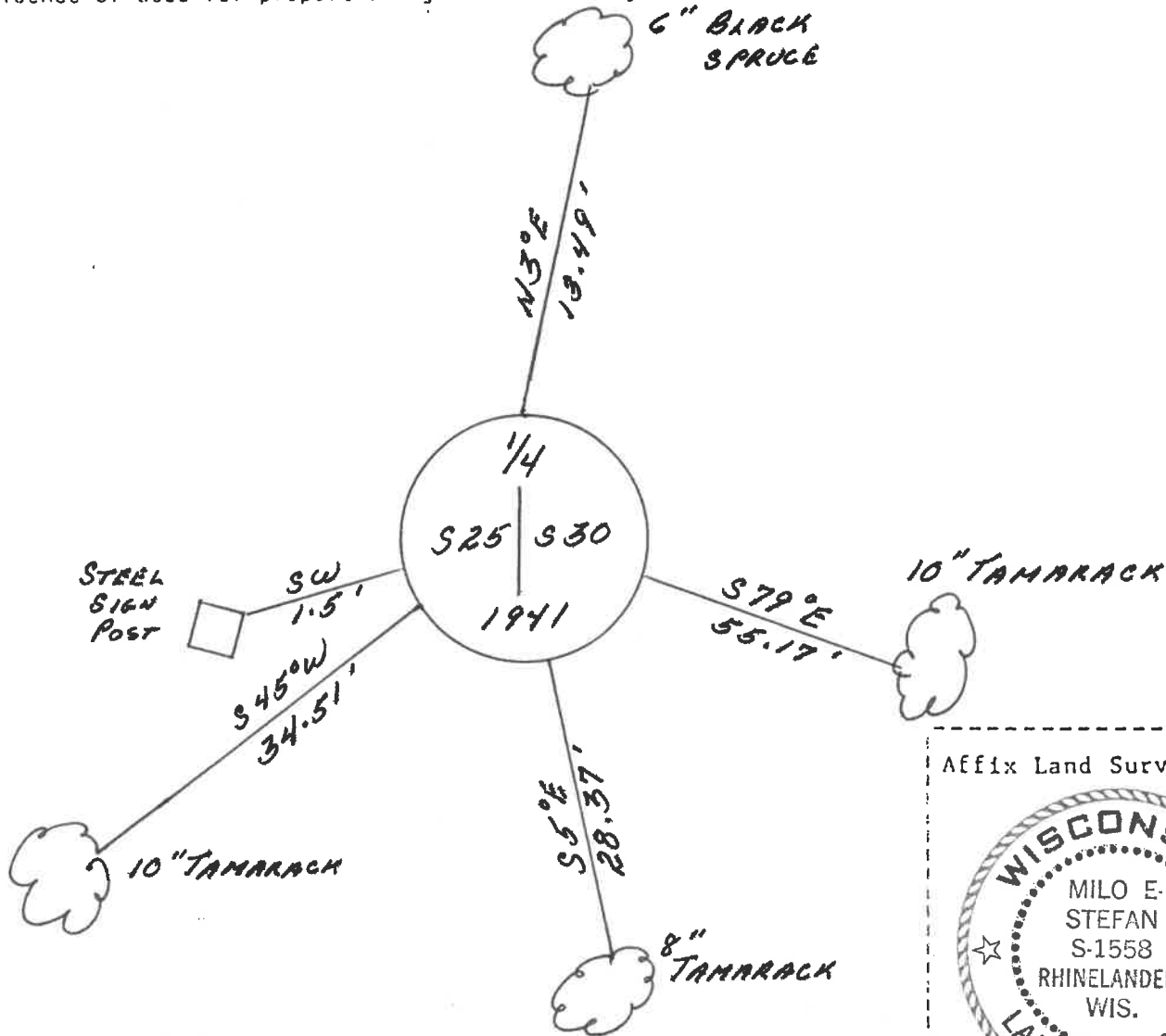
43911.252000

(e) Describe any material discrepancy between the location of the corner as restored or reestablished and the location of that corner as previously restored or reestablished by distance and direction. Show the discrepancy on the plan view drawing under (d), above. Show the distances between the corner as previously restored or reestablished and (1) the corner as restored or reestablished, and (2) to at least 2 of the witness monuments shown on the drawing in (d), above.

(f) Was the corner restored through acceptance of (1) an obliterated evidence location, or, (2) a found perpetuated location?

2) A found perpetuated position

(g&h) Was the corner reestablished through lost corner proportionate methods? If so, show the method, including the directions and distances to other public land survey corners used as evidence or used for proportioning in determining the corner location?



(i) I, Milo E. Stefan  
(type or print name) certify that the corner location shown on this record was determined by me or under my direction and control and that this U.S. Public Land Survey Monument Record is correct and complete to the best of my knowledge and belief.

Milo E. Stefan  
Signature

10/31/88  
Date

Certificate ready for filing:

Amelia Sford  
District Ranger

Affix Land Surveyor Seal

