

CERTIFIED ESTABLISHED LAND CORNER

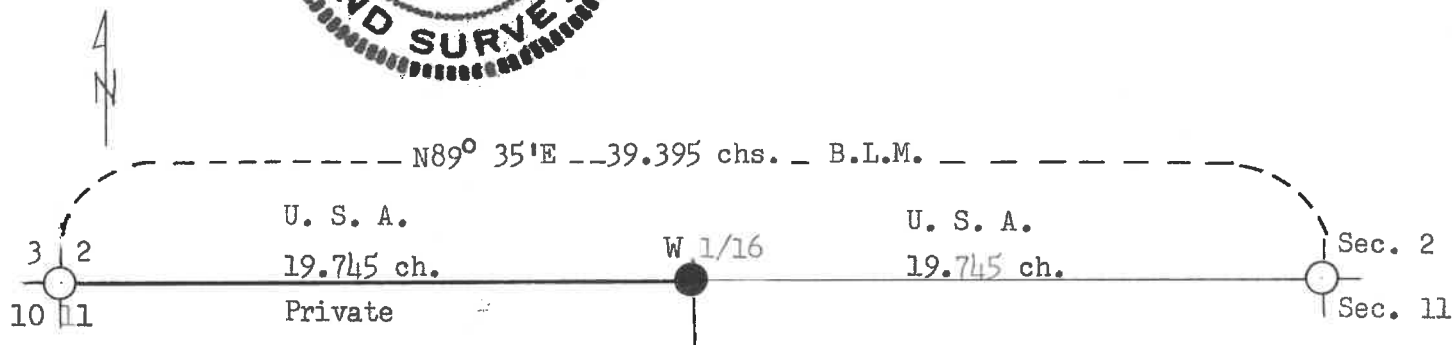
STATE OF WISCONSIN)
County of Forest) SS

I, Jean F. Resvick, do hereby certify that on the 3rd day of August, 1967, I established the West 1/16 corner between Sections 2 and 11, Township 39 North, Range 12 East, of the Fourth Principal Meridian, in accordance with the rules for the subdivision survey of the Public Lands. The plat map hereon is a correct representation of the method used and the monument and accessories as established and described to perpetuate the location of this corner.



Jean F. Resvick

Cadastral Surveyor, U. S. Forest Service
Wisconsin Registered Land Surveyor
Certificate No. S-802



W 1/16 Corner Accessories:

Maple, 7", N12°E, 21.19 ft. 32.1 lks.
Maple, 7", N87°E, 17.44 ft. 26.4 lks.
Maple, 6", S70° 30'W, 21.67 ft. 32.8 lks.

LEGEND:

- - B.L.M. Survey Monument
- - Corner established - Marked by a 2" diameter pipe, 5 feet long, with Brass tablet stamped to identify corner.
- U. S. A. - U. S. Government Land
- Private - Private Land
- Scale - 1 inch = 6 chains
- - Boundary line marked

DOC. NO. **91227**

Office of Register of Deeds County of Forest, I hereby certify that the within instrument was filed in this office for record on the 27th day of February, 1968, and was filed in Book No. I, Page No. E-18 of County Records as Document No. 91227.

Signature Eugene Staszny Title Register of Deeds
Township 39 North, Range 12 East, Section 11, Index No. E-18, Page No.

43912020030

E
18