

# U.S. PUBLIC LAND SURVEY MONUMENT RECORD

Index No. E-7

15

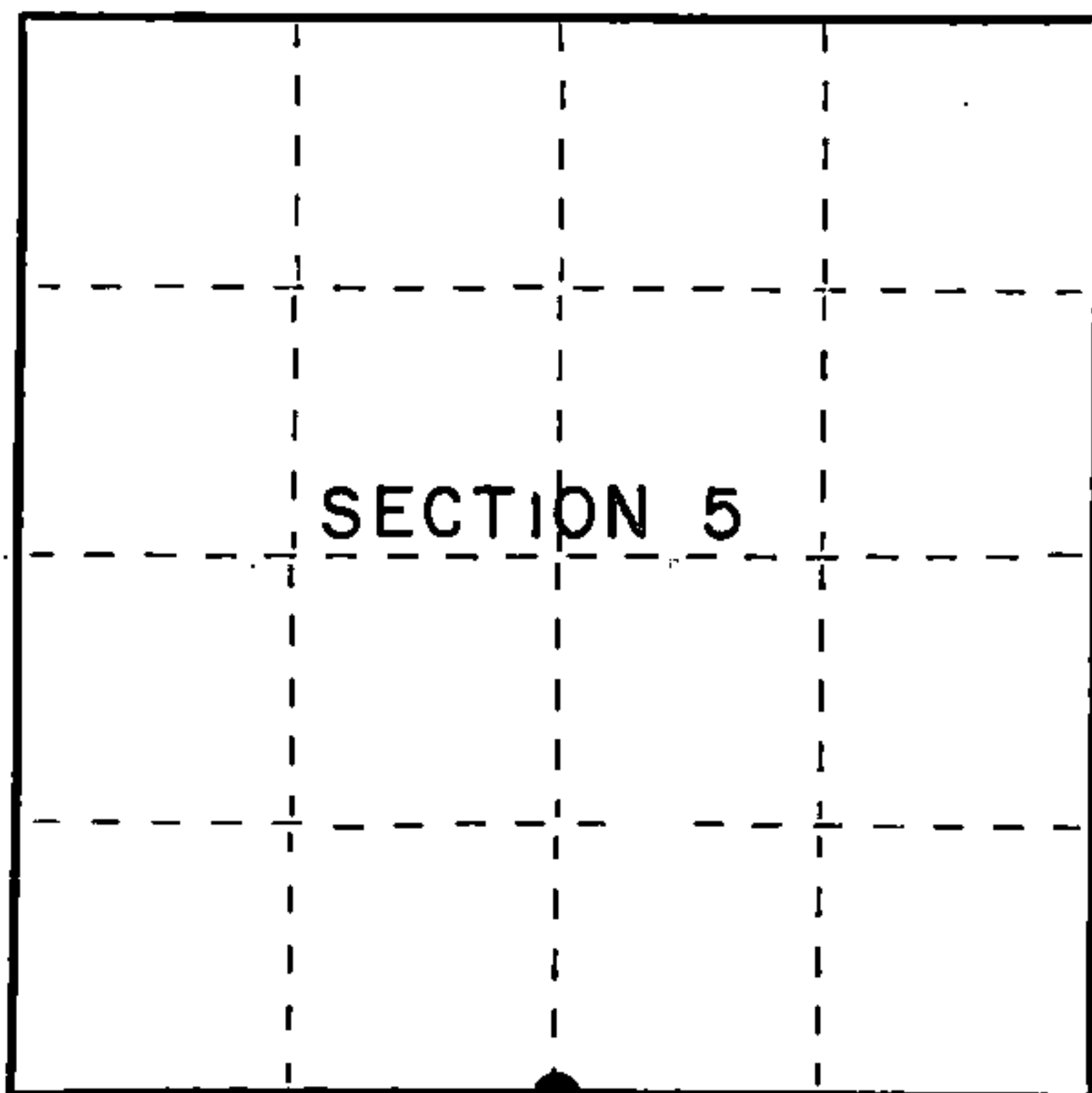
State of Wisconsin }  
County of Forest } ss.

I, Gary L. Pisoni, do hereby  
certify that on the 4th day  
of December, 1986, I found  
evidence of the South quarter  
corner of Section 5  
Township 39, North, Range  
12E, Fourth Principal Meridian,  
as described hereon; and that from this evidence  
I established a new monument and accessories  
as described hereon to perpetuate the original  
location of this corner.

Resident witnesses:

Mark Selmo

Bill Erickson



○ = Corner monument restored.

History of original corner establishment:

1939 Dependent resurvey.

No evidence found of the original post or original bearing trees. Corner restored by proportionate methods.

Set a 6" diameter concrete monument 24" long (flush with ground surface) with a 3½" diameter brass tablet stamped as follows: U.S. General Land Office Survey, 1/4, S5, S8, 1939 from which the following bear:

Spruce	7"	S.01°30'W.	24 links
Spruce	7"	N.01°W.	68 links

Description of corner evidence found:

Monument as described and in place, from which the following bear:

All bearing trees dead.

Description of monument and accessories I established to perpetuate the original location of this corner.

Blazed and scribed the following new bearing trees:

Tamarack	7"	N.80°E.	18.68 feet
Black Spruce	3"	S.23°E.	6.29 feet
Black Spruce	3"	N.70°W.	8.20 feet
Steel sign post		N.04°E.	0.8 feet

Dated at Iron River, MI, Wis., this 2nd day of November, 1987.

Signature Gary L. Pisoni Title Land Surveyor Registration No. S-1634  
(County Surveyor, Registered Land Surveyor, or other duly authorized official)

Office of Register of Deeds, County of Forest, I hereby certify that the within  
instrument was filed in this office for record on the 5th day of February, 1988  
at 12:45 o'clock P. M.

Paul Aschenbrenner  
(Register of Deeds)

By \_\_\_\_\_ Deputy

FORM NO. 985-A

H.C. Miller Company  
Bismarck, N.D.

Stock No. 26273

DOCUMENT NUMBER **134613**

43912050920

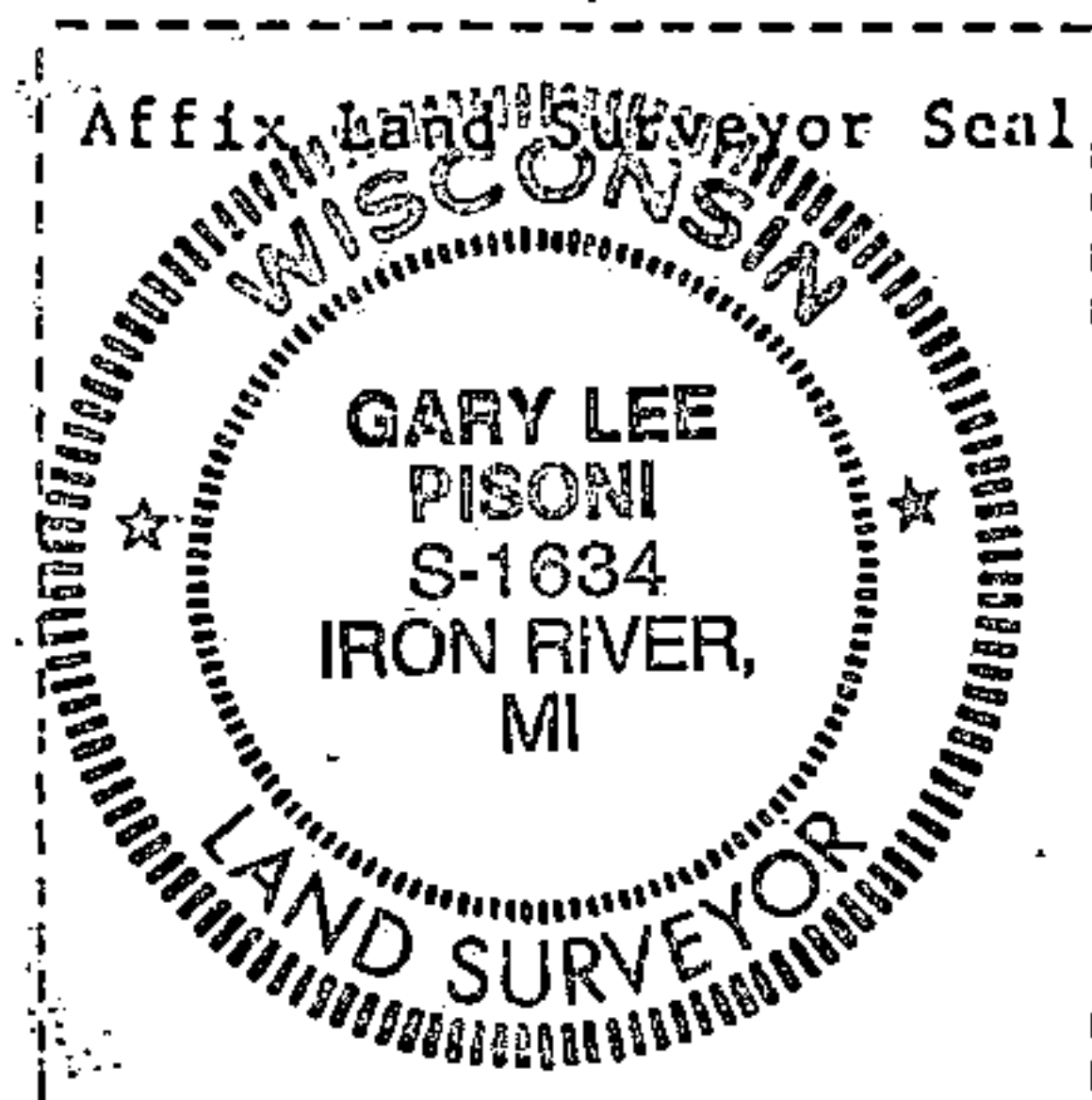
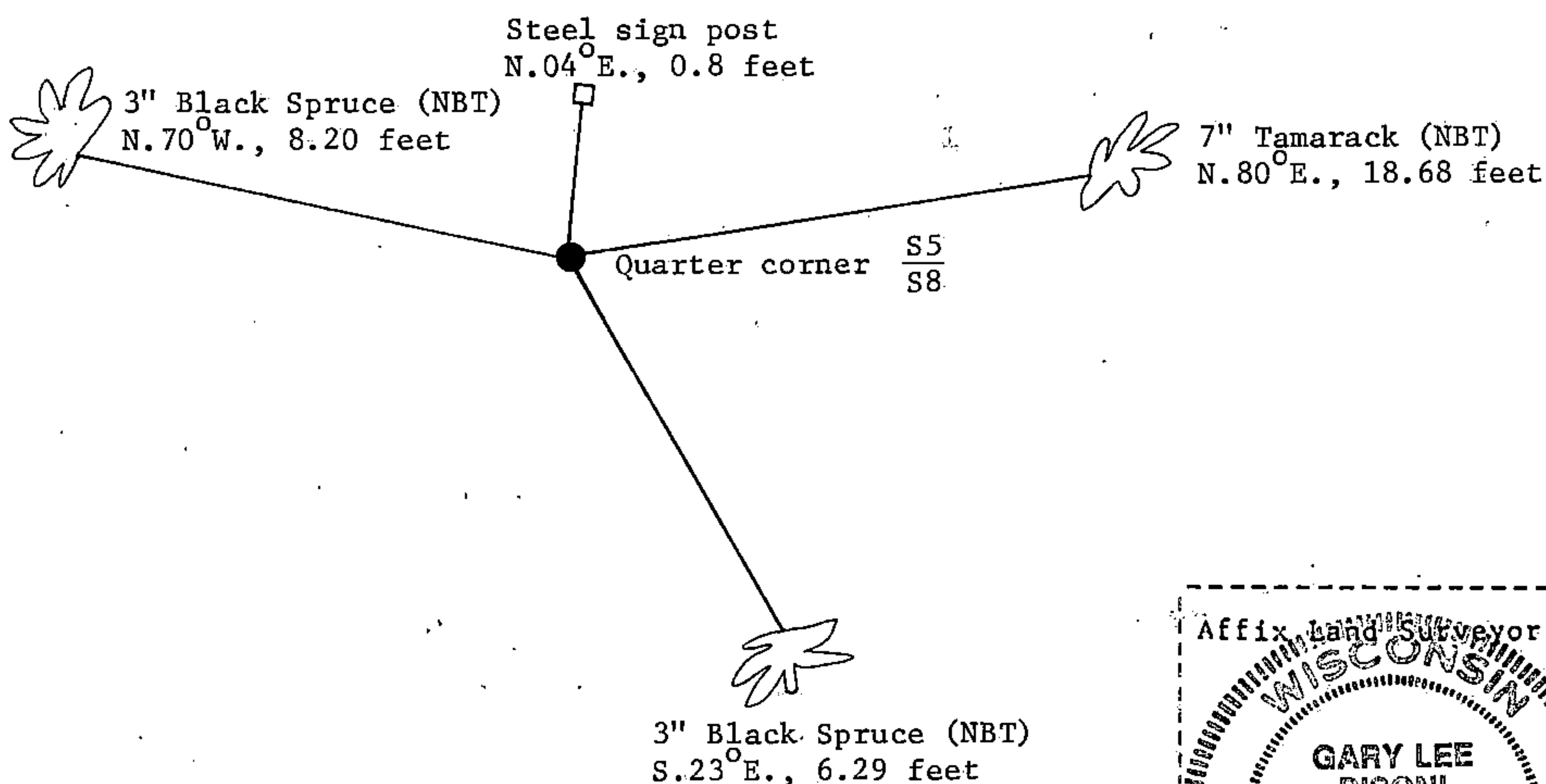
- (e) Describe any material discrepancy between the location of the corner as restored or reestablished and the location of that corner as previously restored or reestablished by distance and direction. Show the discrepancy on the plan view drawing under (d), above. Show the distances between the corner as previously restored or reestablished and (1) the corner as restored or reestablished, and (2) to at least 2 of the witness monuments shown on the drawing in (d), above.

See drawing below.

- (f) Was the corner restored through acceptance of (1) an obliterated evidence location, or, (2) a found perpetuated location?

Restored through acceptance of a found perpetuated location.

- (g&h) Was the corner reestablished through lost corner proportionate methods? If so, show the method, including the directions and distances to other public land survey corners used as evidence or used for proportioning in determining the corner location?



- (i) I, Gary L. Pisoni  
(type or print name) certify that the corner location shown on this record was determined by me or under my direction and control and that this U.S. Public Land Survey Monument Record is correct and complete to the best of my knowledge and belief.

Signature

Date

Survey requested by:

Jeffrey F. Henett  
District Ranger

2/2/83  
Date