

CERTIFIED LAND CORNER RESTORATION

State of Wisconsin

County of Forest

ss.

I Jean F. Resvick, do hereby certify that on the 19th day of October, 1978, I found evidence of the Northwest section corner of Section 30 Township 39 North, Range 14 East, Fourth Principal Meridian, as described hereon; and that from this evidence I established a new monument and accessories as described hereon to perpetuate the original location of this corner:

Description of original monument and accessories and subsequent restorations:

Surveyed in 1858 by Alfred Millard
North 80 chains between sections 25 and 30, set post
Cedar 14, N75W, 24 lks.
Cedar 16, N79E, 16 lks.
Hemlock 16, S47E, 18 lks.
Fir 10, S51W, 42 lks.
1.50 ch. North enter swamp NW & SE
1.66 ch. West enter swamp NE & SW

Description of corner evidence found:

6x6 scribed post
Fallen cedar bears N79E, 16 lks.
Fallen cedar bears N75W, 24 lks.
Hemlock stump remains under balsam bears S47E, 18 lks.

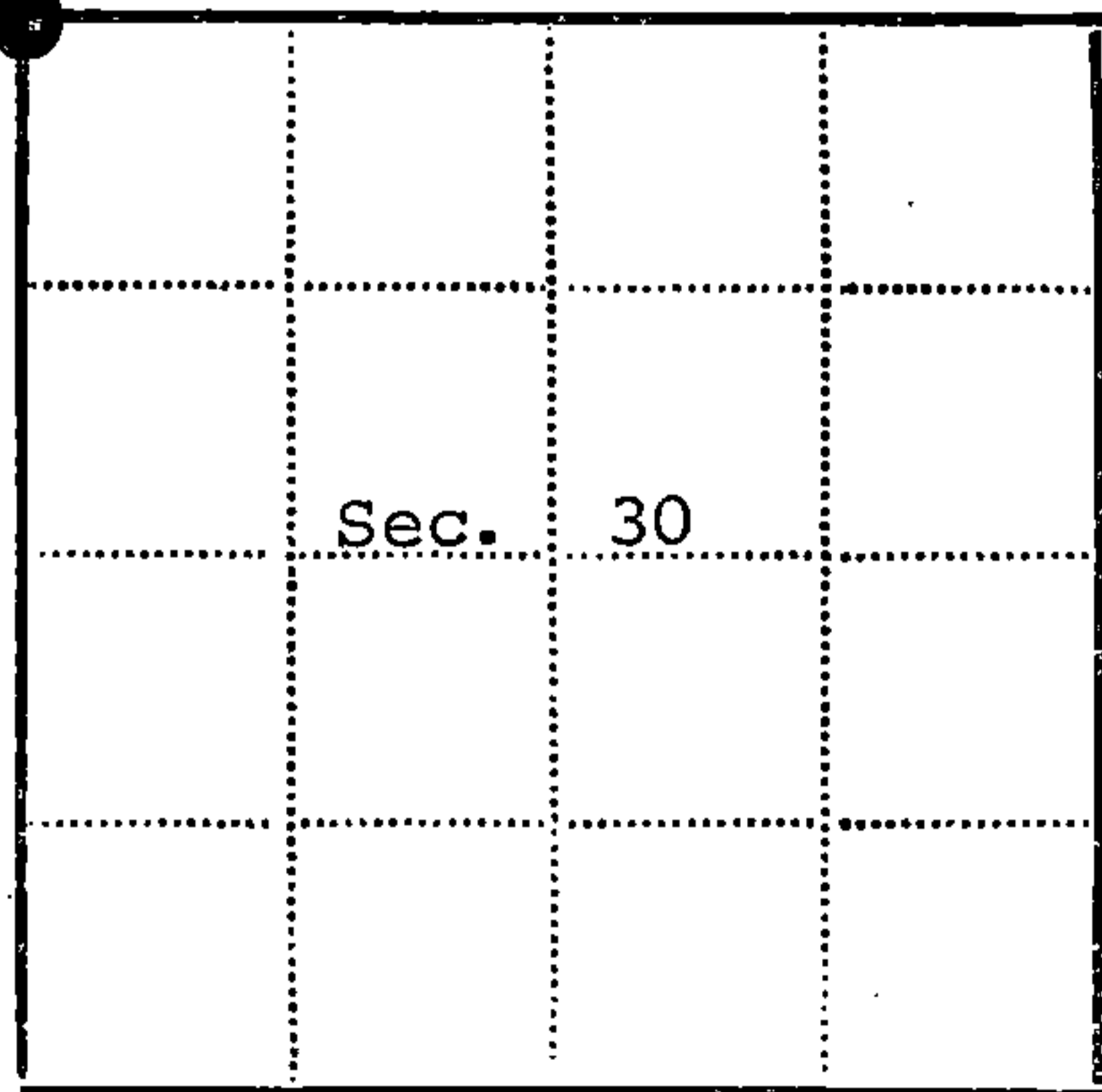
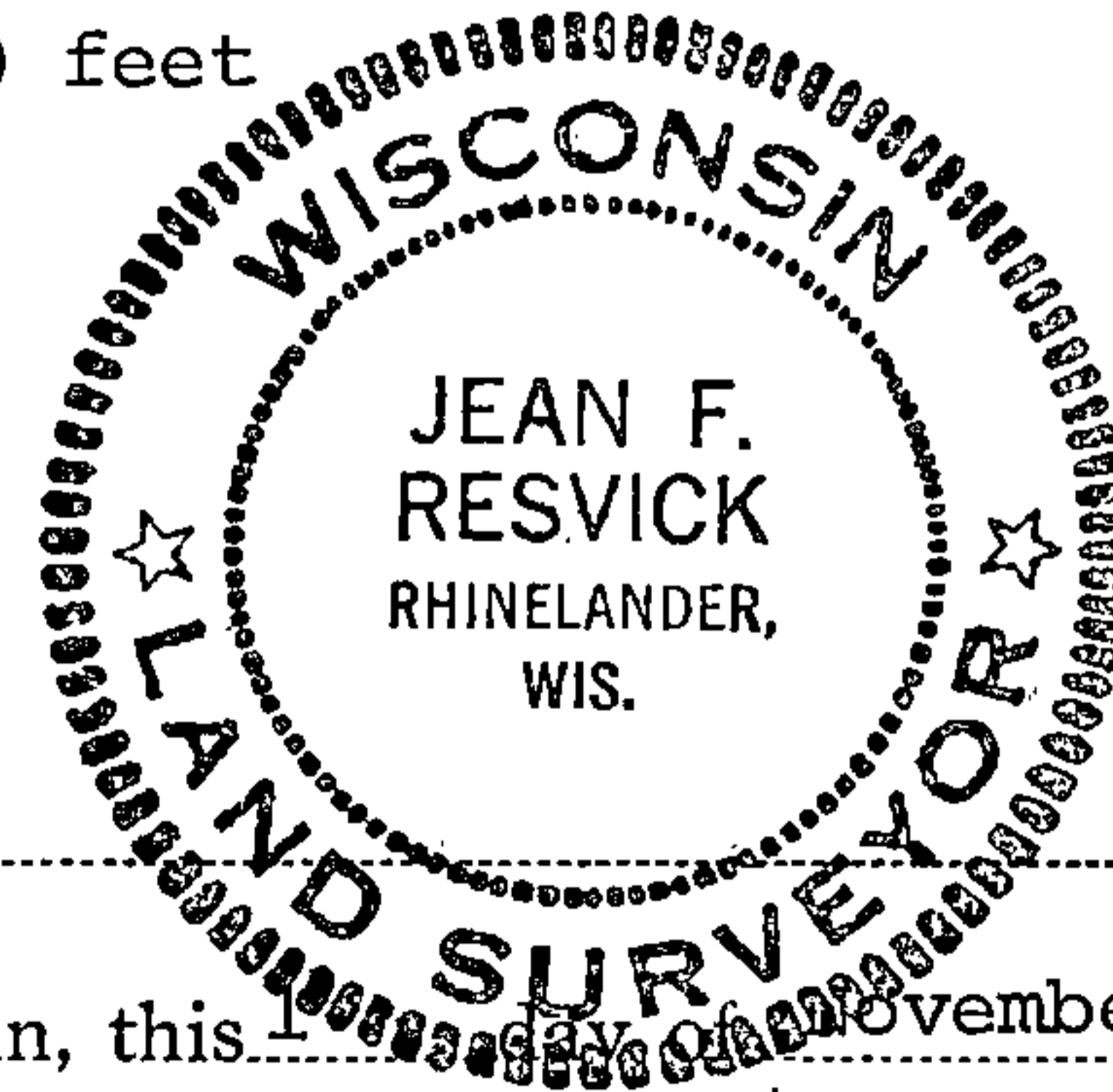
Description of monument and accessories I established to perpetuate the location of this corner:

Replaced 6x6 post with a 2 inch inside diameter, galvanized iron pipe, 3 feet long, filled with concrete with brass cap stamped, T39N, R13E, R14E, S24, S19, S25, S30, 1978.

Blazed and scribed the following new bearing trees:

Balsam 8, N83E, 12.63 ft.
Spruce 6, N27W, 15.56 ft.
Measured to high point on North side of large rock, S53W, 30.90 feet
Rock is 8 ft. by 9 ft. by 4 1/2 ft. above ground.

439.13240000



● - Corner monument restored
□ -

Resident witnesses

Dated at Rhinelander Wisconsin, this 19th day of November 1978.

Signature Jean F. Resvick Title Land Surveyor
(County Surveyor, Registered Land Surveyor, or other duly authorized official)

Surveyors Registration No. S-802

DOCUMENT NUMBER 115180

Office of Register of Deeds County of Forest

I hereby certify that the within instrument was filed in this office for record on the 27th day of November 1978, and was filed in Book No. Page No. of County Records.

Signature Eugene Stutzman Title Register of Deeds

Township 39 North, Range 14 East, Section 30, Index No. R-1, Page No.

U.S. PUBLIC LAND SURVEY MONUMENT RECORD

Index No. R-25

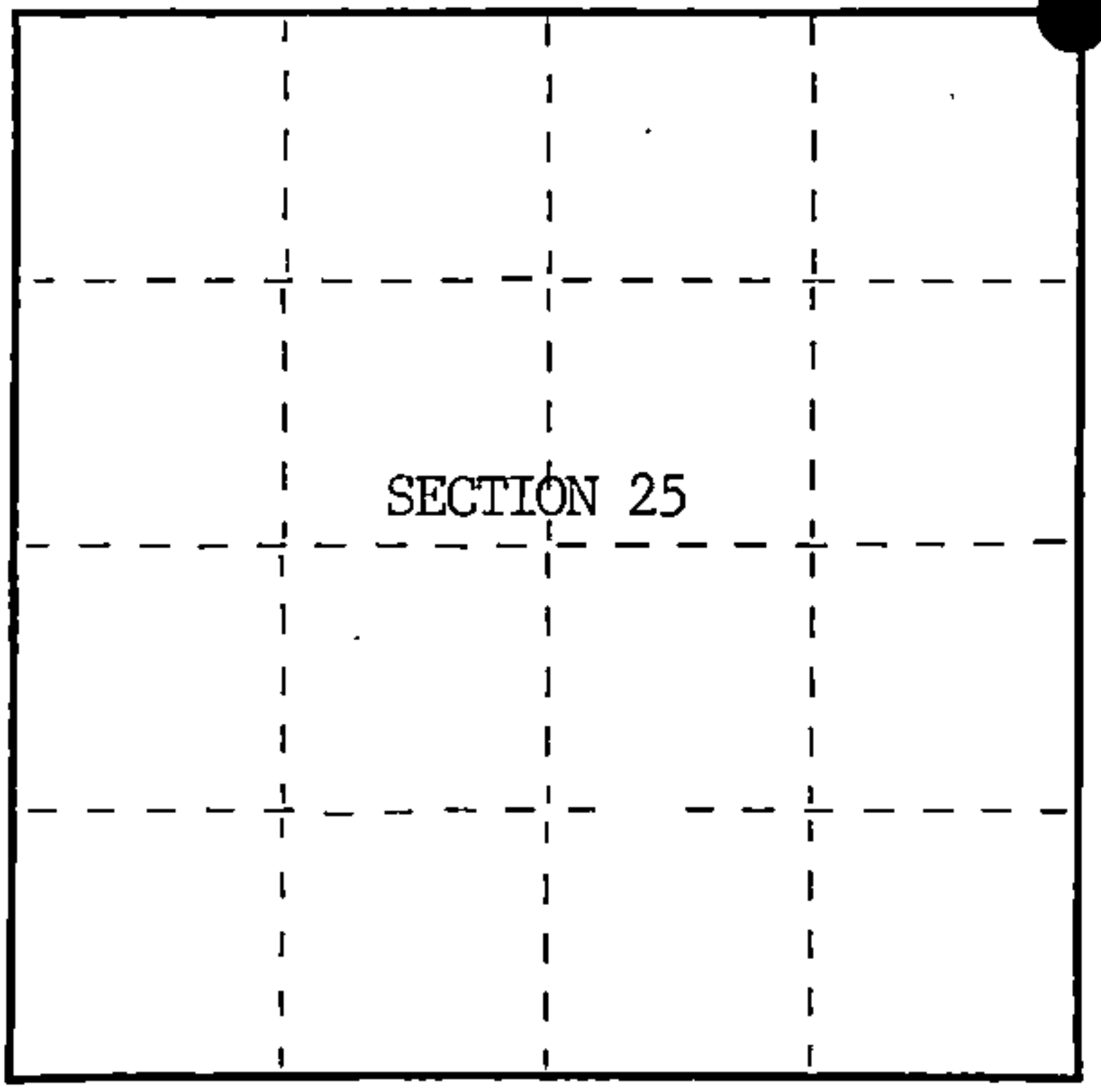
State of Wisconsin }
County of Forest } ss.

I, William B. Cochrane, do hereby
certify that on the 25th day
of July, 1985, I found
evidence of the Northeast Section
corner of Section 25
Township 39, North, Range
13 East, Fourth Principal Meridian,
as described hereon; and that from this evidence
I established a new monument and accessories
as described hereon to perpetuate the original
location of this corner.

Resident witnesses:

David Brownell

State Plane Co-ordinates
N- 247,272.6310
E-2,305,953.1260



○ = Corner monument restored.

History of original corner establishment:

Original Government Survey in 1858 by Alfred Millard.

Corner restored on October 19th, 1978, by Jean Resvick, a Registered Land
Surveyor with the U.S. Forest Service.

See Certified Land Corner Restoration Certificate #115180, filed in the Registrar
of Deeds Office, in the Forest County Courthouse.

Description of corner evidence found:

Monument as described and in place, from which the following bear;

Balsam	9"	N83°E	12.63 feet-Cut down for Aerial Photo Project
Spruce	7"	N27°W	15.56 feet-Cut down for Aerial Photo Project
High Point on Rock		S53°W	30.90 feet

Description of monument and accessories I established to perpetuate the original location of this corner.

Blazed and scribed the following new bearing trees;

Maple	7"	N86°E	62.64 feet
Balsam	6"	N26°W	45.35 feet
Steel Sign Post		NE	3.00 feet

Dated at Hiles, Wis., this 16th day of January, 1986.

Signature William B. Cochrane Title Land Surveyor Registration No. S-1107
(County Surveyor, Registered Land Surveyor, or other duly authorized official)

Office of Register of Deeds, County of Forest, I hereby certify that the within
instrument was filed in this office for record on the 11th day of March, 1987
at 3:30 o'clock P. M.

Paul Aschentranner
(Register of Deeds)

By Deputy

FORM NO. 985-A
H.C. Miller Company

Stock No. 26273

DOCUMENT NUMBER 132306

43913240000

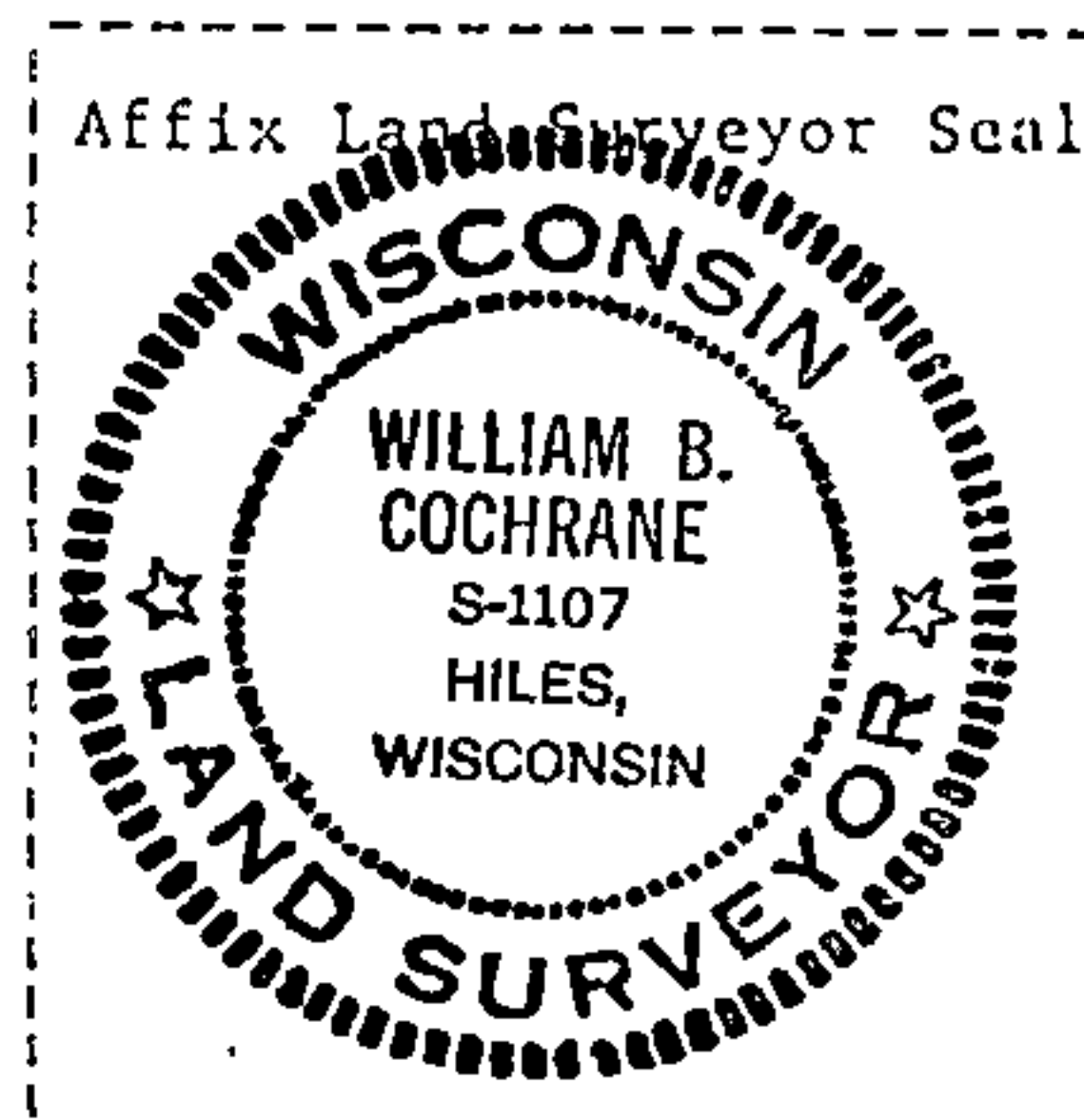
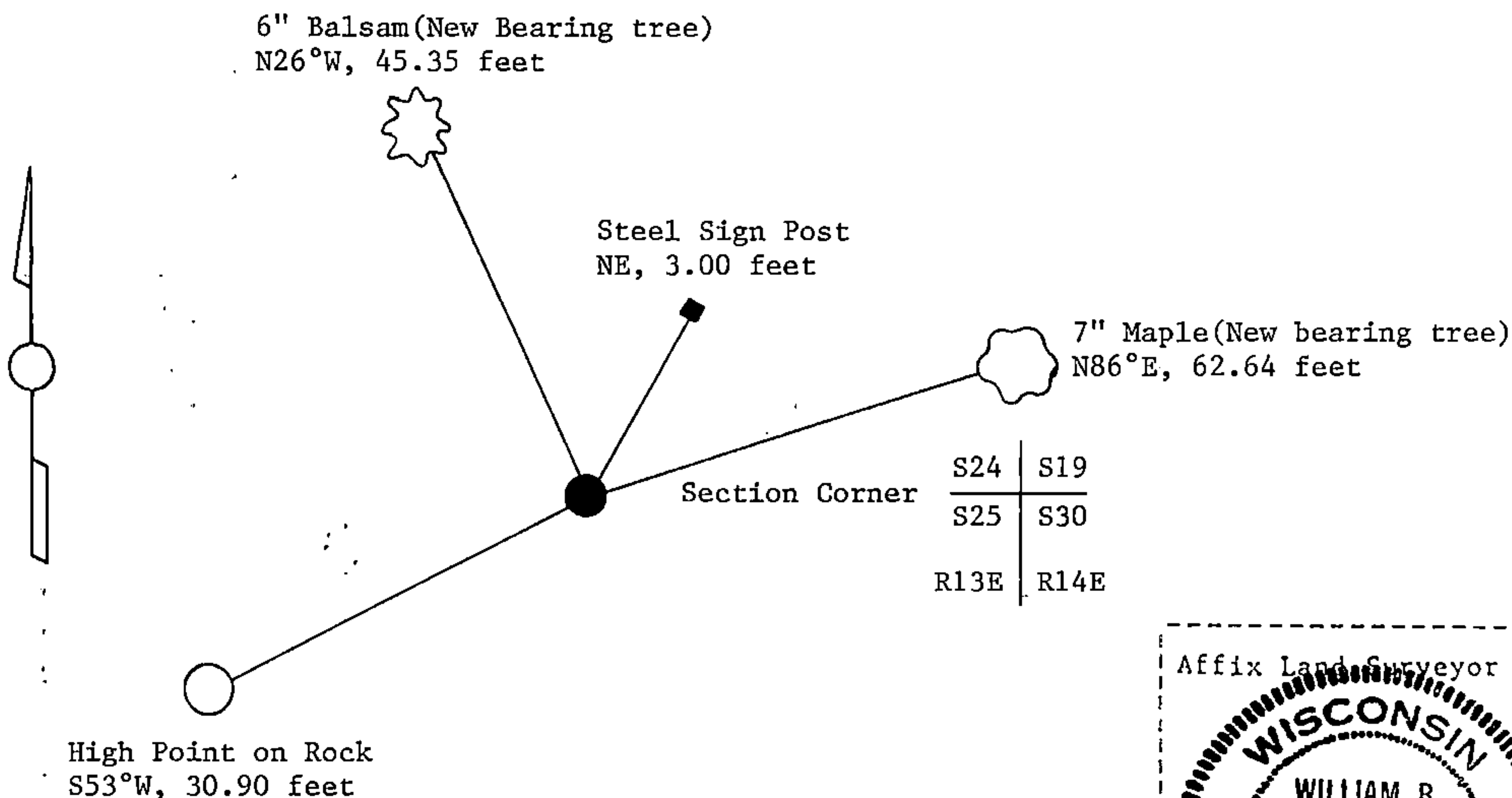
- (e) Describe any material discrepancy between the location of the corner as restored or reestablished and the location of that corner as previously restored or reestablished by distance and direction. Show the discrepancy on the plan view drawing under (d), above. Show the distances between the corner as previously restored or reestablished and (1) the corner as restored or reestablished, and (2) to at least 2 of the witness monuments shown on the drawing in (d), above.

See drawing below.

- (f) Was the corner restored through acceptance of (1) an obliterated evidence location, or, (2) a found perpetuated location?

Restored through acceptance of a found perpetuated location.

- (g&h) Was the corner reestablished through lost corner proportionate methods? If so, show the method, including the directions and distances to other public land survey corners used as evidence or used for proportioning in determining the corner location?



- (i) I, William B. Cochrane
(type or print name) certify that the corner location shown on this record was determined by me or under my direction and control and that this U.S. Public Land Survey Monument Record is correct and complete to the best of my knowledge and belief.

William B. Cochrane October 7, 1986
Signature Date

Survey requested by: Edward Wenger 3-9-87
District Ranger Date

U.S. PUBLIC LAND SURVEY MONUMENT RECORD

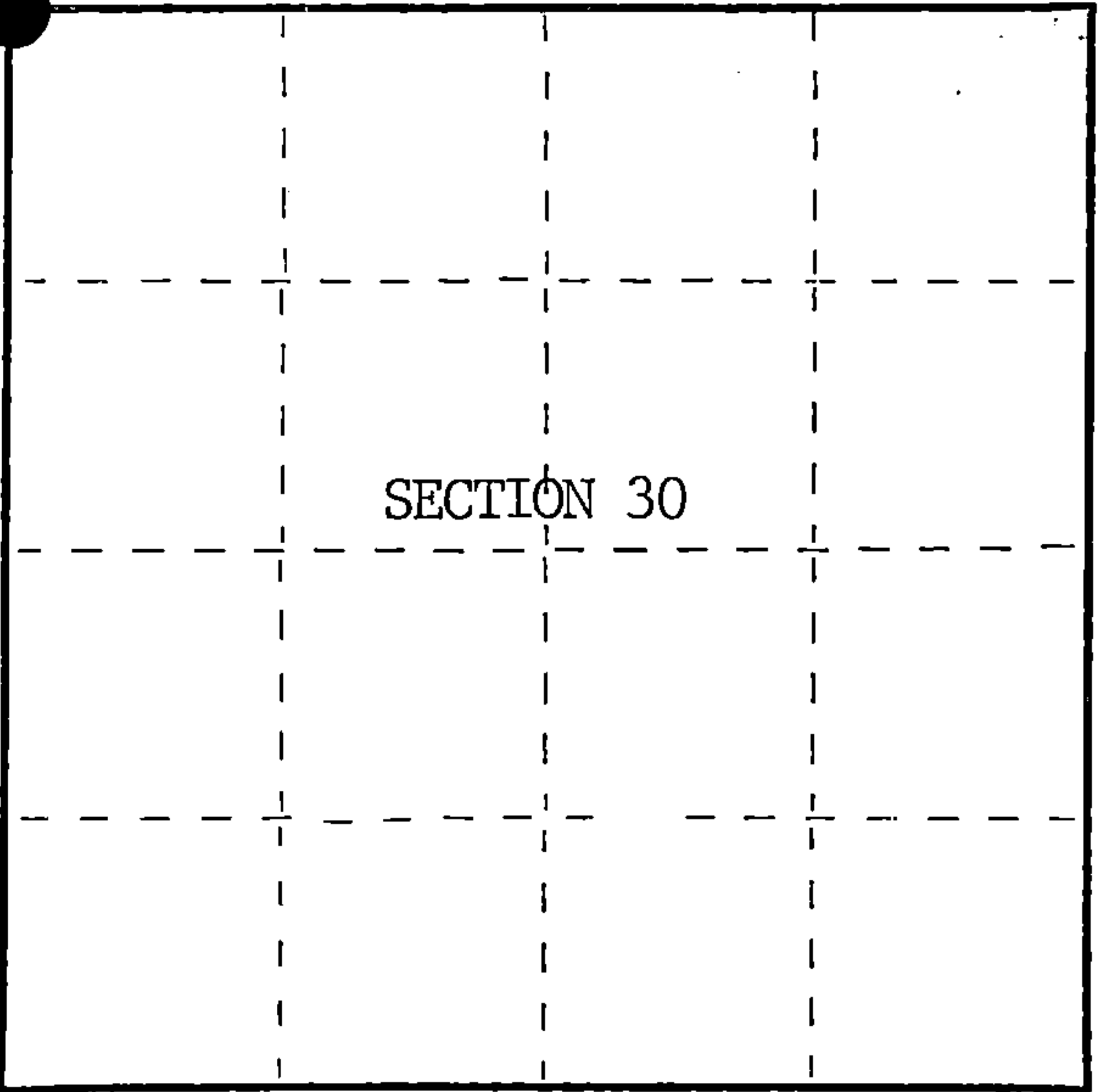
Index No. R-1

State of Wisconsin }
County of Forest } ss.

I William B. Cochrane, do hereby
certify that on the 25th day
of July, 1985, I found
evidence of the Northwest Section
corner of Section 30
Township 39, North, Range
14 East, Fourth Principal Meridian,
as described hereon; and that from this evidence
I established a new monument and accessories
as described hereon to perpetuate the original
location of this corner.

Resident witnesses:
David Brownell

State Plane Co-ordinates
N- 247,272.6310
E-2,305,953.1260



○ = Corner monument restored.

History of original corner establishment:

Original Government Survey in 1858 by Alfred Millard.

Corner restoration on October 19, 1978, by Jean Resvick, a Registered Land
Surveyor with the U.S. Forest Service.

See Certified Land Corner Restoration Certificate #115180, filed in the Registrar
of Deeds Office, in the Forest County Courthouse.

Description of corner evidence found:

Monument as described and in place, from which the following bear;

Balsam	9"	N83°E	12.63 feet	- Cut down for Aerial Photo Project
Spruce	7"	N27°W	15.56 feet	- Cut down for Aerial Photo Project
High Point of Rock		S53°W	30.90 feet	

Description of monument and accessories I established to perpetuate the original location of this corner.

Blazed and scribed the following new bearing trees;

Maple	7"	N86°E	62.64 feet
Balsam	6"	N26°W	45.35 feet
Steel Sign Post		NE	3.00 feet

Dated at Hiles, Wis., this 15th day of January, 1986

Signature William B. Cochrane Title Land Surveyor Registration No. S-1107
(County Surveyor, Registered Land Surveyor, or other duly authorized official)

Office of Register of Deeds, County of Forest, I hereby certify that the within
instrument was filed in this office for record on the 11th day of March, 1987
at 3:30 o'clock P. M.

Paul Aschenbrenner
(Register of Deeds)

By Deputy

FORM NO. 985-A
H.C. Miller Company
P.O. Box 100
Forest, Wisconsin

Stock No. 26273

DOCUMENT NUMBER 132375

43913240000

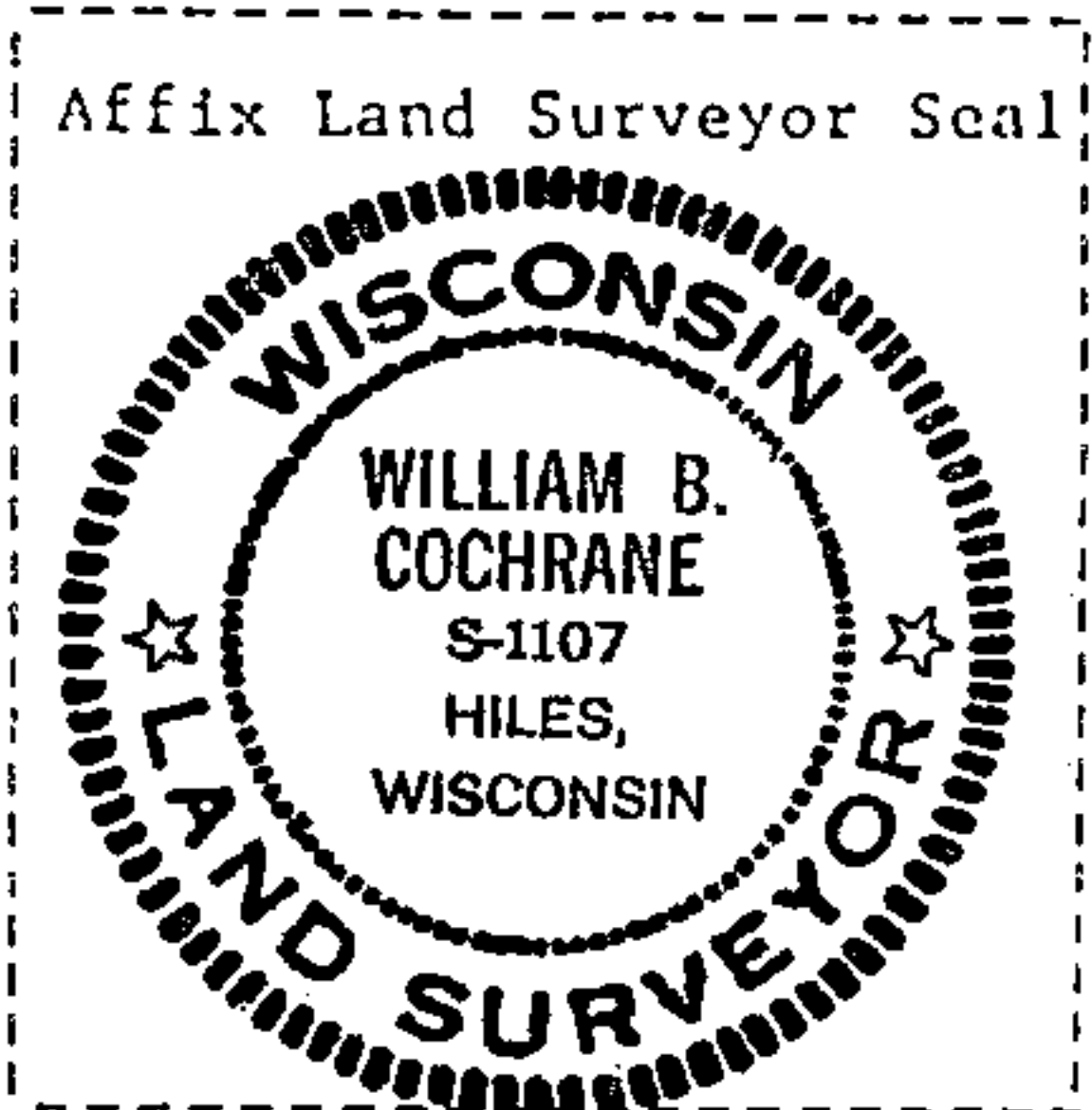
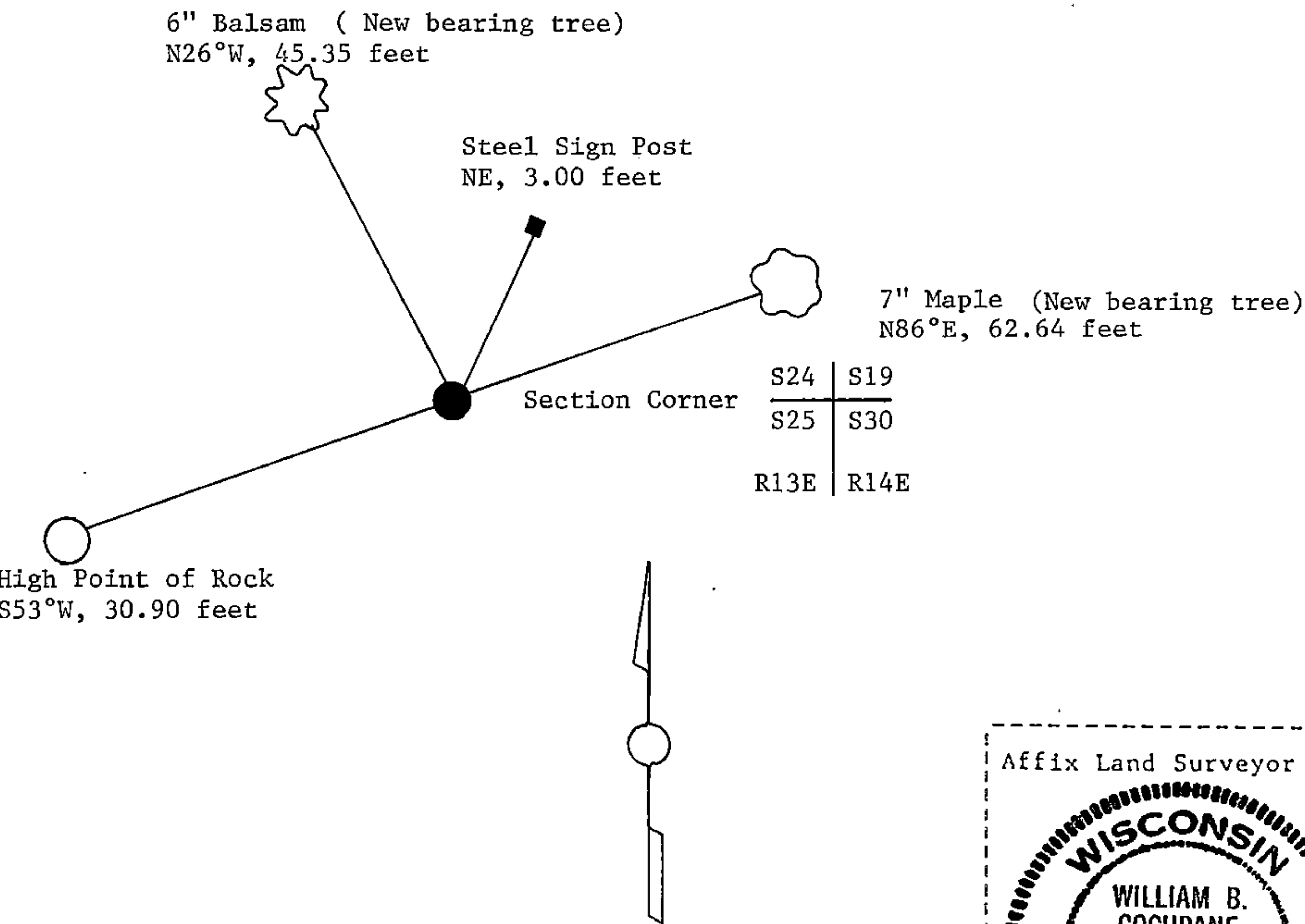
(e) Describe any material discrepancy between the location of the corner as restored or reestablished and the location of that corner as previously restored or reestablished by distance and direction. Show the discrepancy on the plan view drawing under (d), above. Show the distances between the corner as previously restored or reestablished and (1) the corner as restored or reestablished, and (2) to at least 2 of the witness monuments shown on the drawing in (d), above.

See drawing below.

(f) Was the corner restored through acceptance of (1) an obliterated evidence location, or, (2) a found perpetuated location?

Restored through acceptance of a found perpetuated location.

(g&h) Was the corner reestablished through lost corner proportionate methods? If so, show the method, including the directions and distances to other public land survey corners used as evidence or used for proportioning in determining the corner location?



(i) I, William B. Cochrane
(type or print name) certify that the corner location shown on this record was determined by me or under my direction and control and that this U.S. Public Land Survey Monument Record is correct and complete to the best of my knowledge and belief.

William B. Cochrane October 7, 1986
Signature Date

Survey requested by: Edward Aeger 3-9-87
District Ranger Date