

U.S. PUBLIC LAND SURVEY MONUMENT RECORD

Index No. P-1State of Wisconsin }
County of Forest } ss.

I William B. Cochrane, do hereby
certify that on the 2nd day
of October, 1986, I found
evidence of the West Quarter
corner of Section 19
Township 39, North, Range
14 East, Fourth Principal Meridian,
as described hereon; and that from this evidence
I established a new monument and accessories
as described hereon to perpetuate the original
location of this corner.

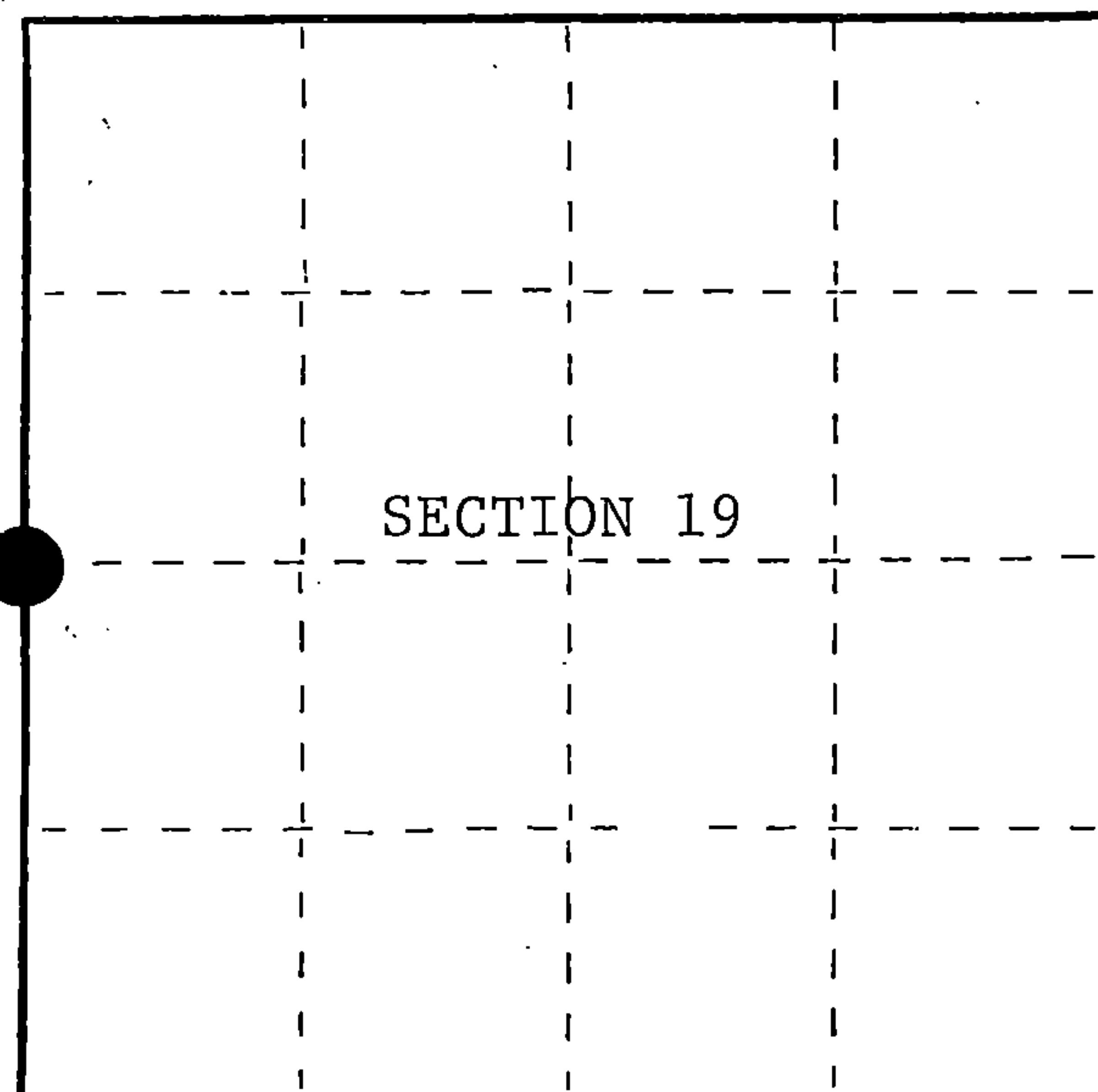
Resident witnesses:

David BrownellTony Tillman

State Plane Co-ordinates

N- 249,854.0410

E-2,305,965.3490



○ = Corner monument restored.

History of original corner establishment:

Original Government Survey in 1858 by Artemas Curtis. North between Sections
19 and 24, at 40 chains, set Quarter Section Post to Sections 19 and 24, R13E
R14E, from which the following bear;

Sugar	10"	S22°E	17 lks.
B.Oak	12"	N46°W	29 lks.

Description of corner evidence found:

No corner evidence was recovered.

The corner position is re-established at proportionate distance and on line
between the Northwest and Southwest Section Corners of Section 19.

Description of monument and accessories I established to perpetuate the original location of this corner.

At the corner position, set a 2½ inch diameter aluminum pipe monument, 3 feet long,
2½ feet in the ground, with an aluminum cap stamped; T39N, R13E, R14E, 1/4, S19,
S24, 1986, S-1107. From which the following new blazed and scribed bearing trees bear;

R. Maple	8"	N46°E	16.90 feet
R. Maple	8"	S30°E	13.05 feet
Steel Sign Post		NE	1.00 feet

Dated at Hiles, Wis., this 2nd day of February, 1987Signature William B. Cochrane Title Land Surveyor Registration No. S-1107
(County Surveyor, Registered Land Surveyor, or other duly authorized official)

Office of Register of Deeds, County of Forest, I hereby certify that the within
instrument was filed in this office for record on the 11th day of March, 1987
at 3:30 o'clock P. M.

Paul Aschenbrenner
(Register of Deeds)

By _____ Deputy

43913242000

- (e) Describe any material discrepancy between the location of the corner as restored or reestablished and the location of that corner as previously restored or reestablished by distance and direction. Show the discrepancy on the plan view drawing under (d), above. Show the distances between the corner as previously restored or reestablished and (1) the corner as restored or reestablished, and (2) to at least 2 of the witness monuments shown on the drawing in (d), above.

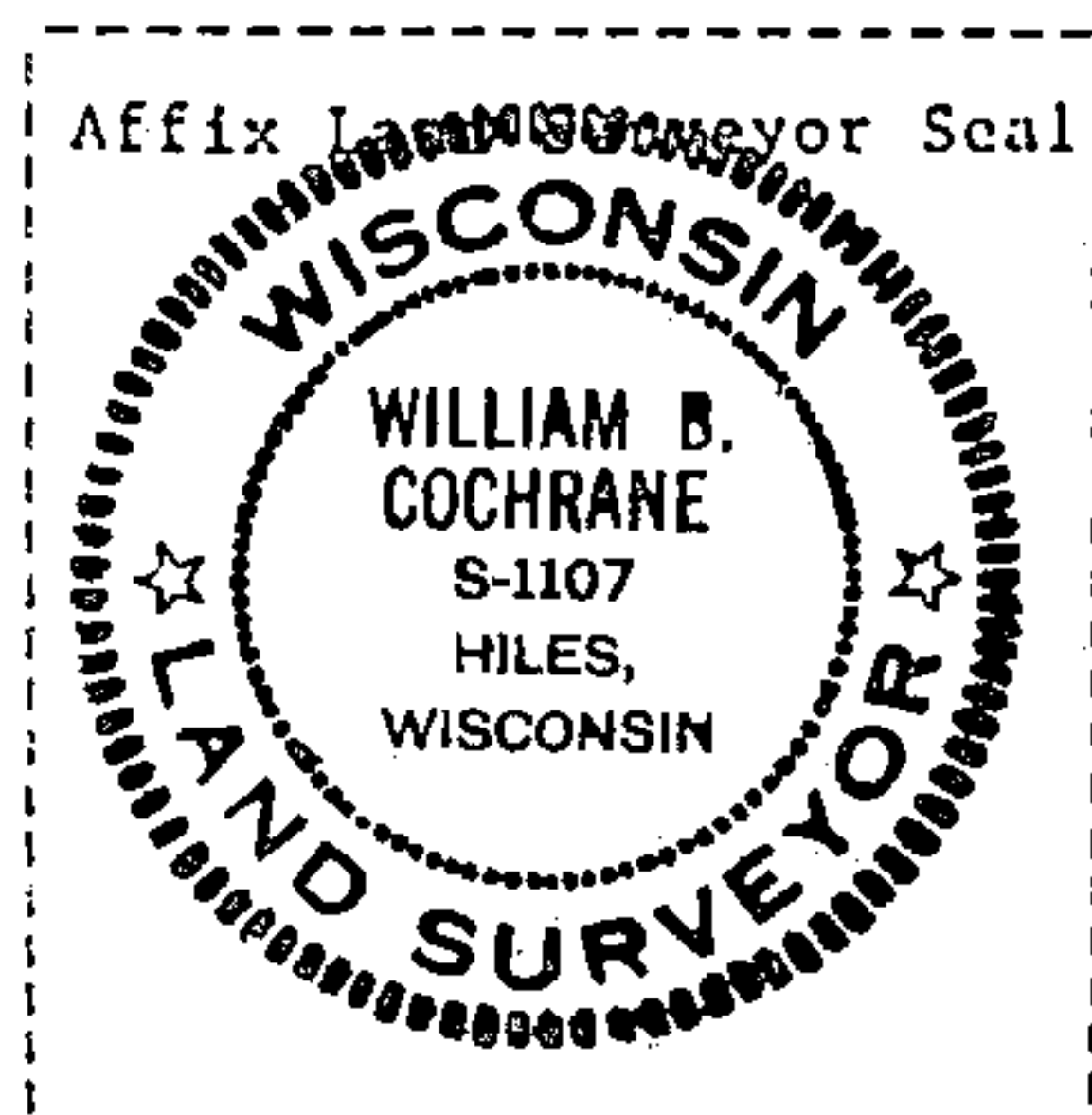
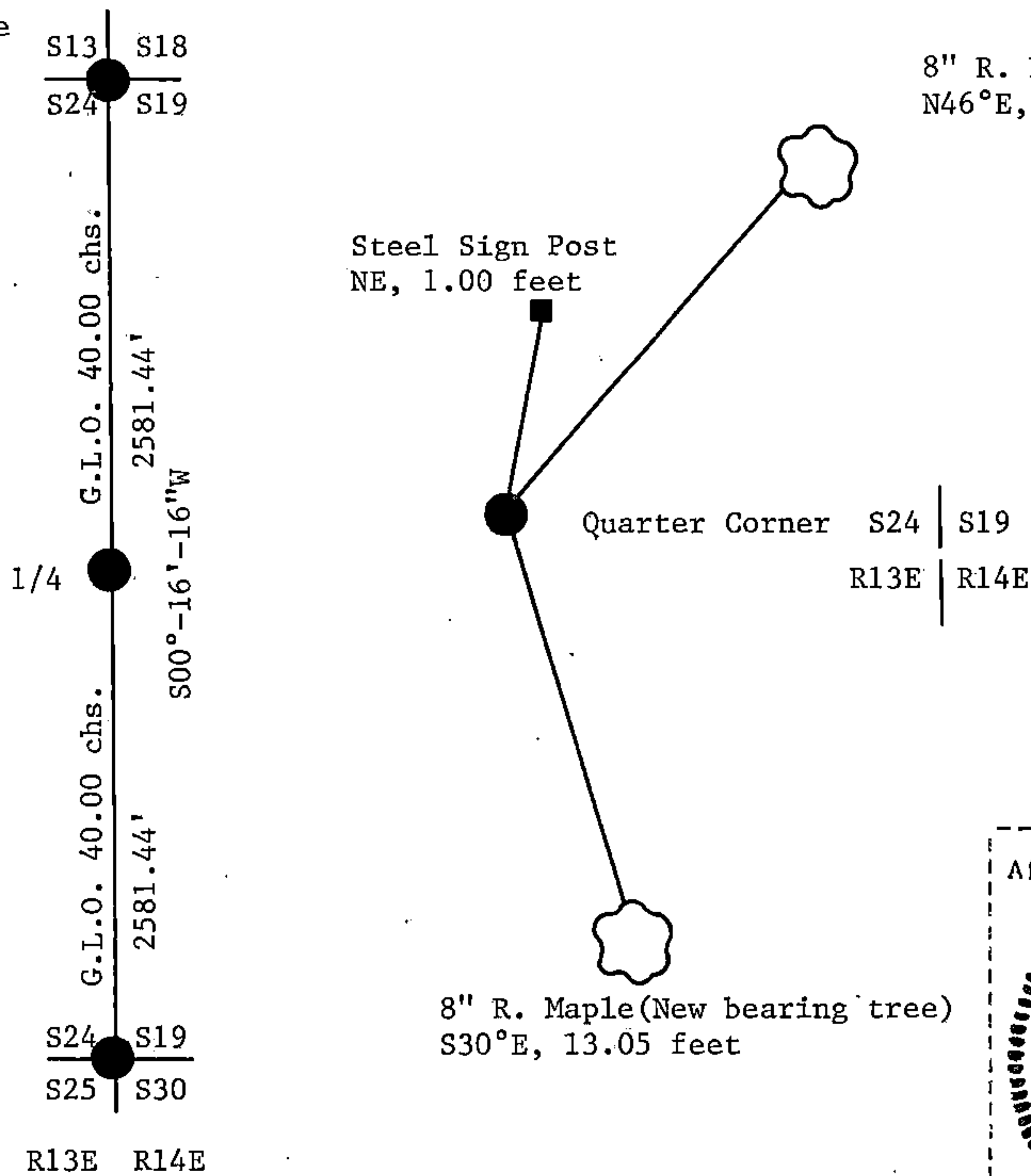
See drawing below.

- (f) Was the corner restored through acceptance of (1) an obliterated evidence location, or, (2) a found perpetuated location?

The corner was re-established using State Plane Co-ordinates computed from Aerial Photography and a Global Positioning Satellite Survey. The computed corner position was located in the field using a North Seeking Gyro, an Electronic Distance Meter, and/or a steel tape.

- (g&h) Was the corner reestablished through lost corner proportionate methods? If so, show the method, including the directions and distances to other public land survey corners used as evidence or used for proportioning in determining the corner location?

See above



- (i) I, William B. Cochrane
(type or print name) certify that the corner location shown on this record was determined by me or under my direction and control and that this U.S. Public Land Survey Monument Record is correct and complete to the best of my knowledge and belief.

William B. Cochrane February 2, 1987
Signature Date

Survey requested by: Chad [Signature] 3-9-87
District Ranger Date

U.S. PUBLIC LAND SURVEY MONUMENT RECORD

Index No. P-25

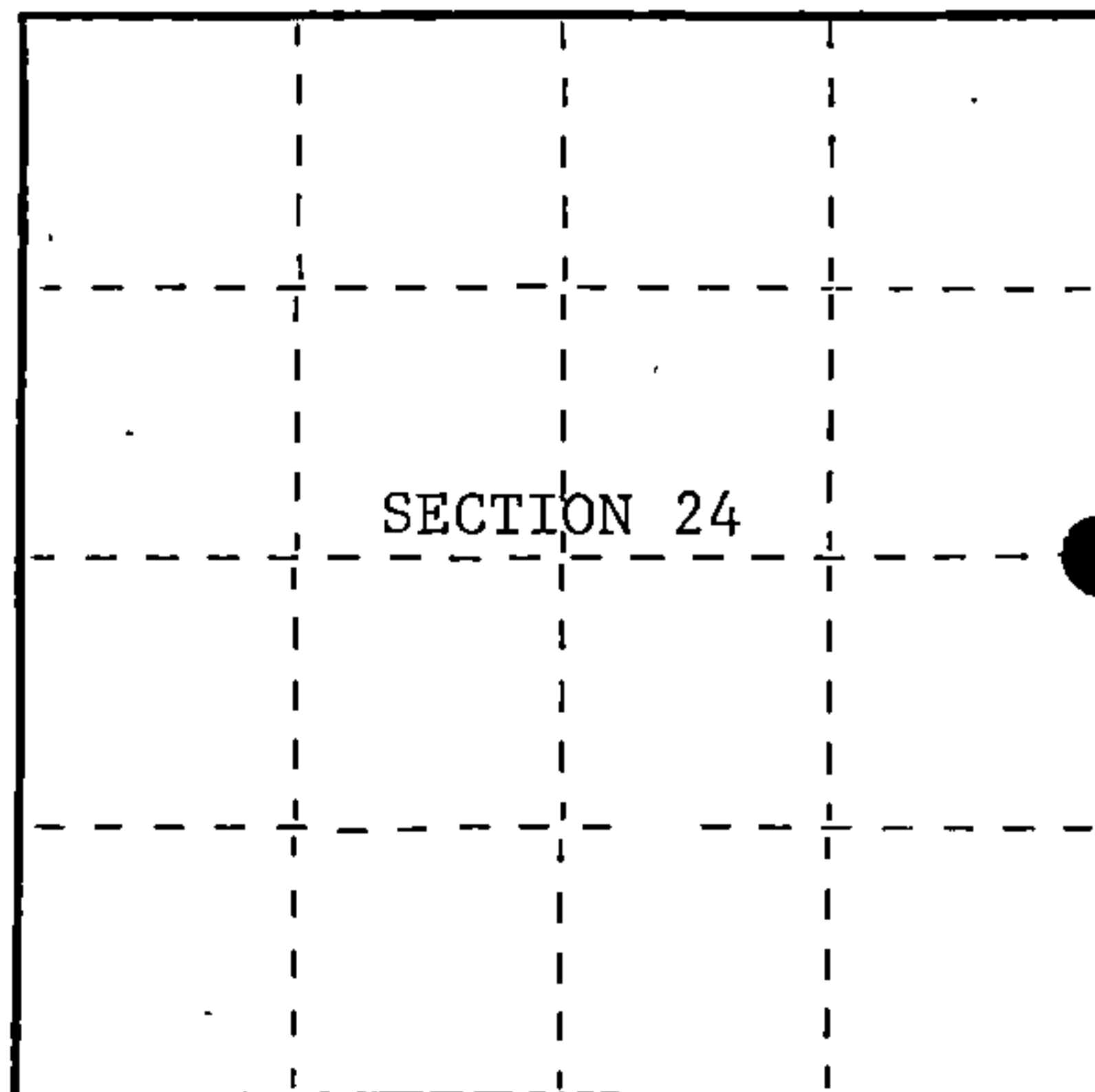
State of Wisconsin }
County of Forest } ss.

I, William B. Cochrane, do hereby
certify that on the 2nd day
of October, 1986, I found
evidence of the East Quarter
corner of Section 24
Township 39 North, Range
13 East, Fourth Principal Meridian,
as described hereon; and that from this evidence
I established a new monument and accessories
as described hereon to perpetuate the original
location of this corner.

Resident witnesses:

David Brownell
Tony Tillman

State Plane Co-ordinates
N- 249,854.0410
E-2,305,965.3490



○ = Corner monument restored.

History of original corner establishment:

Original Government Survey in 1858 by Artemas Curtis. North between Sections
24 and 19, at 40 chains, set Quarter Section Post to Sections 19 and 24,
from which the following bear;

Sugar	10"	S22°E	17 lks.
B. Oak	12"	N46°W	29 lks.

Description of corner evidence found:

No corner evidence was recovered.

The corner position is re-established at proportionate distance and on line
between the Northeast and Southeast Section Corners of Section 24.

Description of monument and accessories I established to perpetuate the original location of this corner.

At the corner position, set a 2½ inch diameter aluminum pipe monument, 3 feet long,
2½ feet in the ground, with an aluminum cap stamped; T39N, R13E, R14E, 1/4,
S24, S19, 1986, S-1107. From which the following new blazed and scribed bearing
trees bear;

R. Maple	8"	N46°E	16.90 feet
R. Maple	8"	S30°E	13.05 feet
Steel Sign Post		NE	1.00 feet

Dated at Hiles, Wis., this 2nd day of February, 1987

Signature: William B. Cochrane Title: Land Surveyor Registration No. S-1107
(County Surveyor, Registered Land Surveyor, or other duly authorized official)

Office of Register of Deeds, County of Forest, I hereby certify that the within
instrument was filed in this office for record on the 11th day of March, 1987
at 3:30 o'clock P. M.

Paul Aschenbrenner
(Register of Deeds)

By Deputy

- (e) Describe any material discrepancy between the location of the corner as restored or reestablished and the location of that corner as previously restored or reestablished by distance and direction. Show the discrepancy on the plan view drawing under (d), above. Show the distances between the corner as previously restored or reestablished and (1) the corner as restored or reestablished, and (2) to at least 2 of the witness monuments shown on the drawing in (d), above.

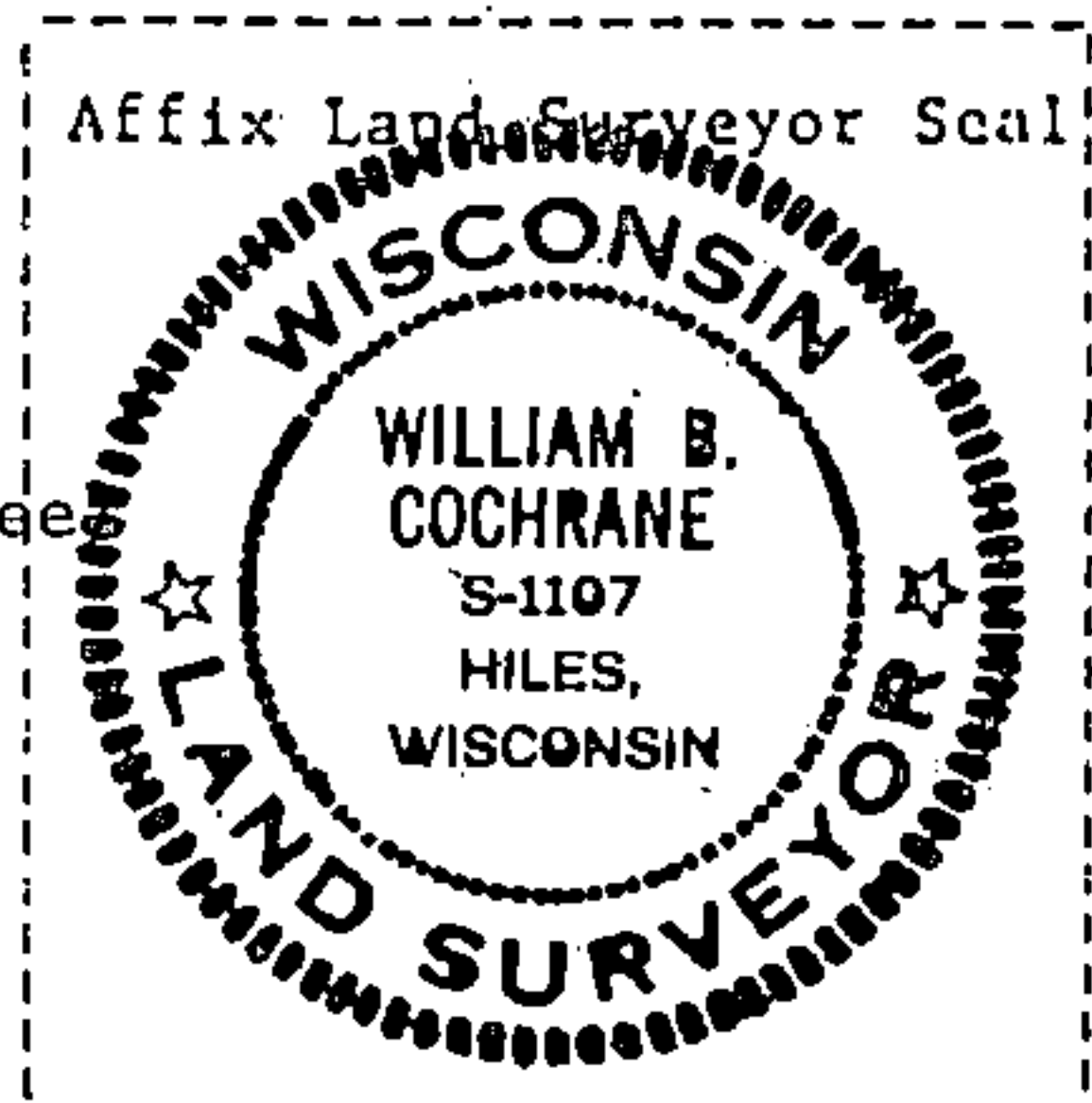
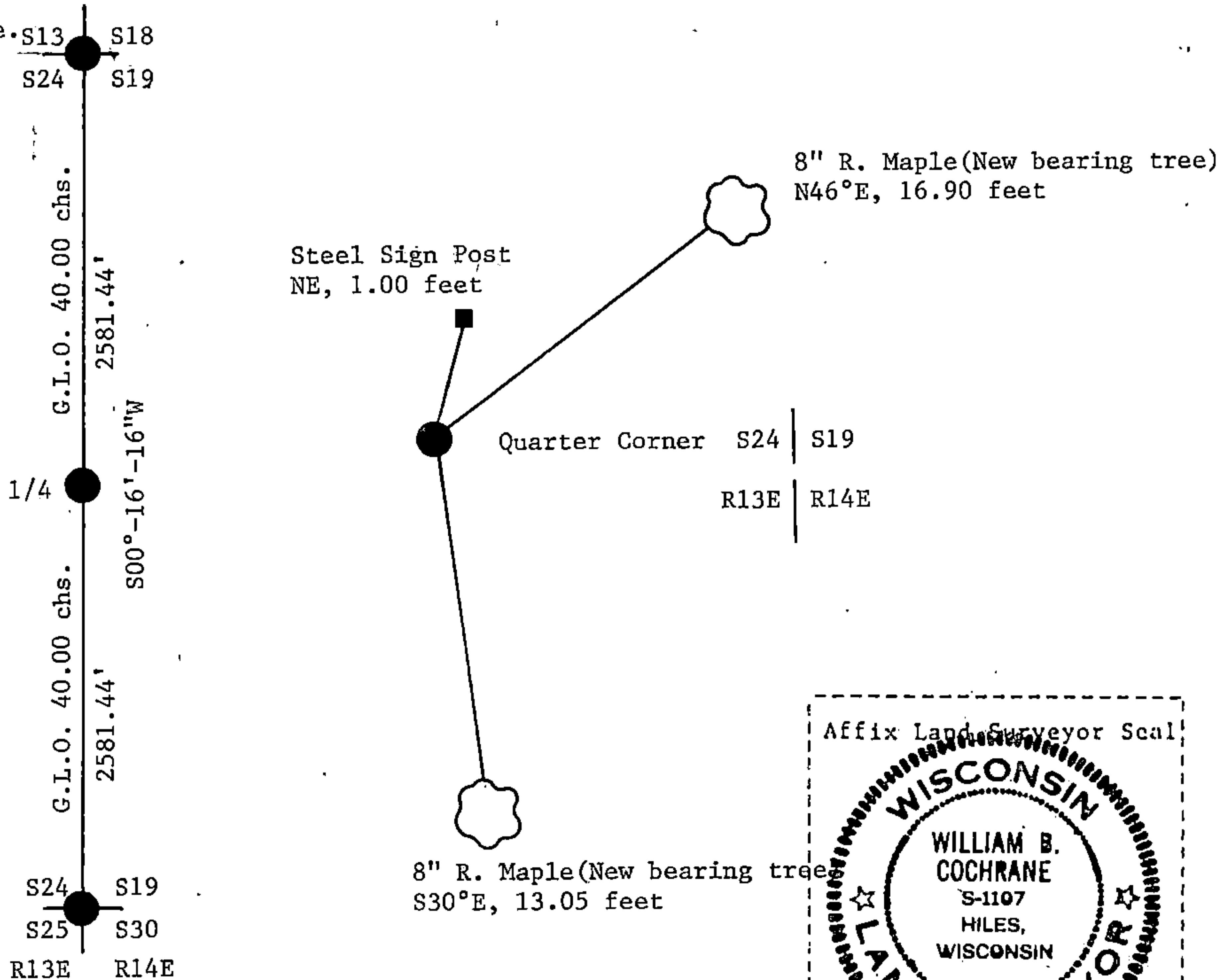
See drawing below.

- (f) Was the corner restored through acceptance of (1) an obliterated evidence location, or, (2) a found perpetuated location?

The corner was re-established using the State Plane Co-ordinates computed from Aerial Photography and a Global Positioning Satellite Survey. The computed corner position was located in the field using a North Seeking Gyro, an Electronic Distance Meter, and/or a steel tape.

- (g&h) Was the corner reestablished through lost corner proportionate methods? If so, show the method, including the directions and distances to other public land survey corners used as evidence or used for proportioning in determining the corner location?

See above.



- (i) I, William B. Cochrane
(type or print name) certify that the corner location shown on this record was determined by me or under my direction and control and that this U.S. Public Land Survey Monument Record is correct and complete to the best of my knowledge and belief.

William B. Cochrane February 2, 1987
Signature Date

Survey requested by: [Signature] 3-9-87
District Ranger Date