

CERTIFIED LAND CORNER RESTORATION

State of Wisconsin

County of Forest

SS.

I William B. Cochrane, do hereby certify that on the 1st day of May, 1974, I found evidence of the Southeast Section corner of Section 3 Township 39 North, Range 14 East, Fourth Principal Meridian, as described hereon; and that from this evidence I established a new monument and accessories as described hereon to perpetuate the original location of this corner:

Description of original monument and accessories and subsequent restorations:

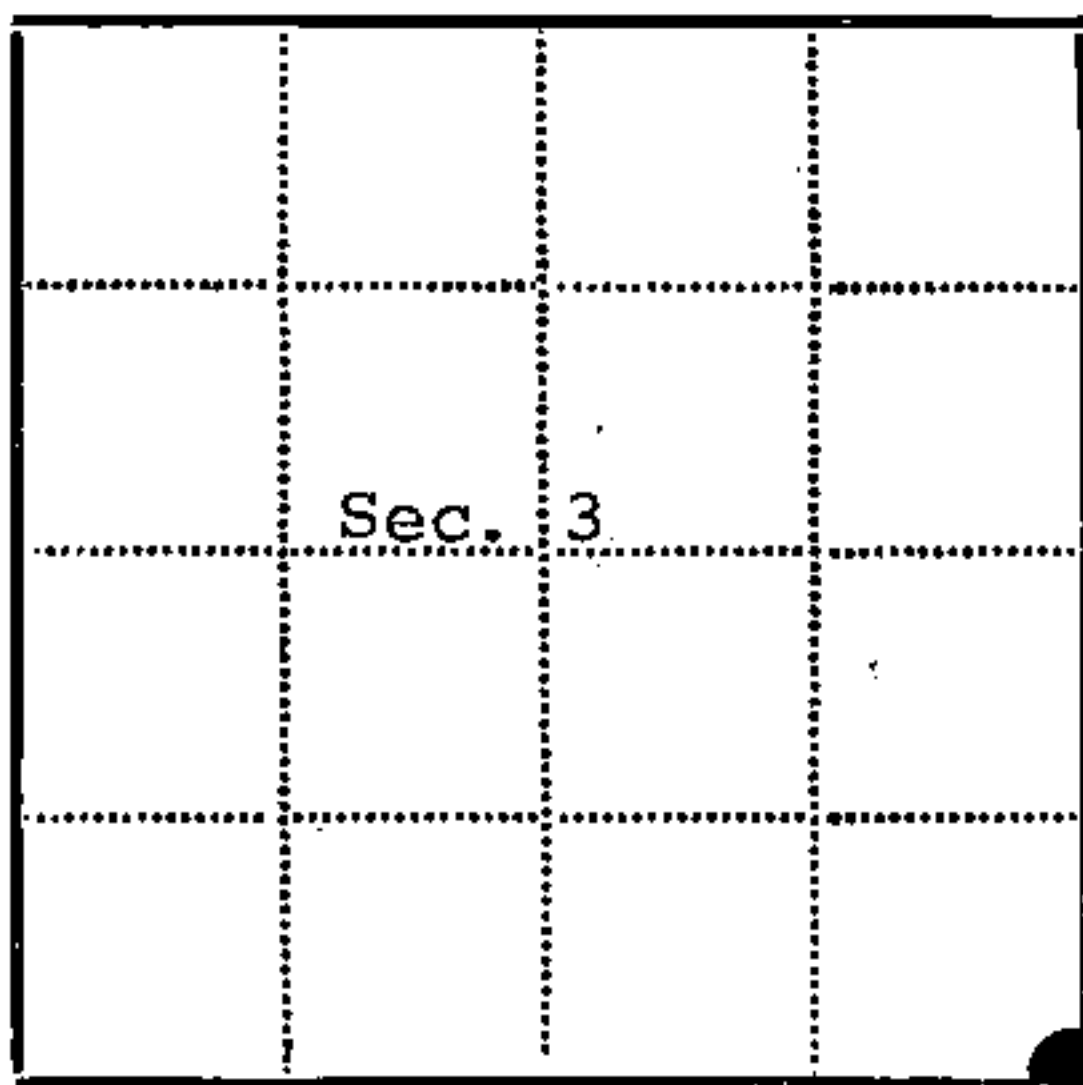
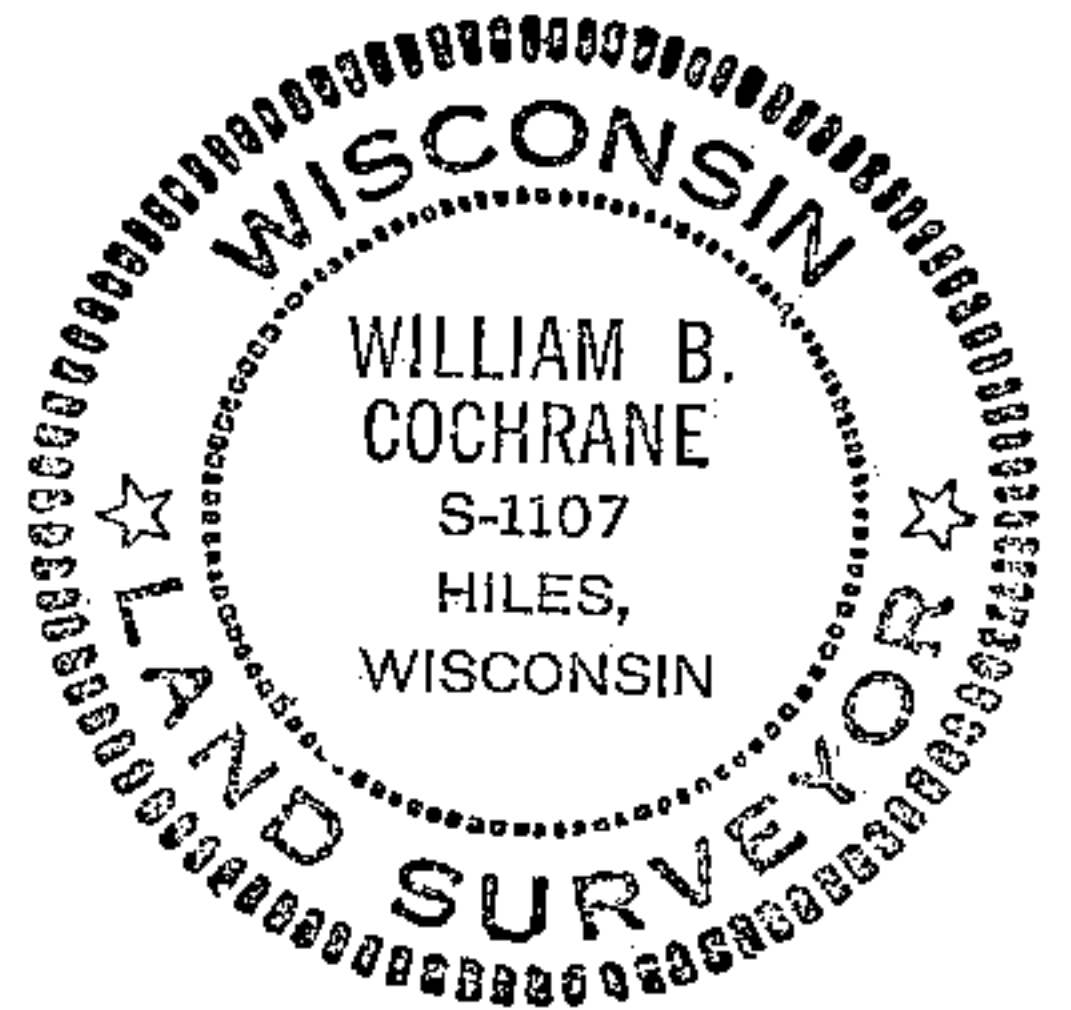
Surveyed in 1865 by Wm. E. Daugherty.
North between Sections 10 and 11. 80.0 chains set post corner to Sections 2, 3, 10 and 11.
Maple, 8", S25°W, 4 lks.
Spruce, 10", N35°E, 20 lks.

Description of corner evidence found:

6 x 6 scribed cedar post.
Maple stump, 12", with scribed overgrowth, S25°W, 4 lks. from post.
No evidence of the spruce was found.

Description of monument and accessories I established to perpetuate the location of this corner:

I replaced the post with a 2 inch inside diameter galvanized pipe, 3 feet long, filled with concrete with a brass cap stamped: T39N, R14E, S2, S3, S10 and S11, 1975.
From which the following bear:
Black spruce, 3", N23°E, 20.88 feet.
Black spruce, 5", S50°E, 6.69 feet.
White spruce, 3", S26°W, 29.27 feet.
Black spruce, 3", N83°W, 12.08 feet.
Set a steel sign post, NW of the monument, 0.50 feet.



- - Corner monument restored
□ -

Resident witnesses

Dated at Three Lakes Wisconsin, this 12th day of June 1975.

Signature William B. Cochrane Title Survey Technician
(County Surveyor, Registered Land Surveyor, or other duly authorized official)

Surveyors Registration No. S-1107 DOCUMENT NUMBER 107232

Office of Register of Deeds County of Forest

I hereby certify that the within instrument was filed in this office for record on the 16th day of June 1975, and was filed in Book No. _____ Page No. _____ of County Records.

Signature Eugene Staszny Title Register of Deeds

Township 39 North, Range 14 East, Section 3, Index No. E-17, Page No. _____

43914030000

E 17

U.S. PUBLIC LAND SURVEY MONUMENT RECORD

Index No. E-17

State of Wisconsin }
County of Forest } ss.

I William B. Cochrane, do hereby
certify that on the 24th day
of July, 1985, I found
evidence of the Southeast Section
corner of Section 3
Township 39, North, Range
14 East, Fourth Principal Meridian,
as described hereon; and that from this evidence
I established a new monument and accessories
as described hereon to perpetuate the original
location of this corner.

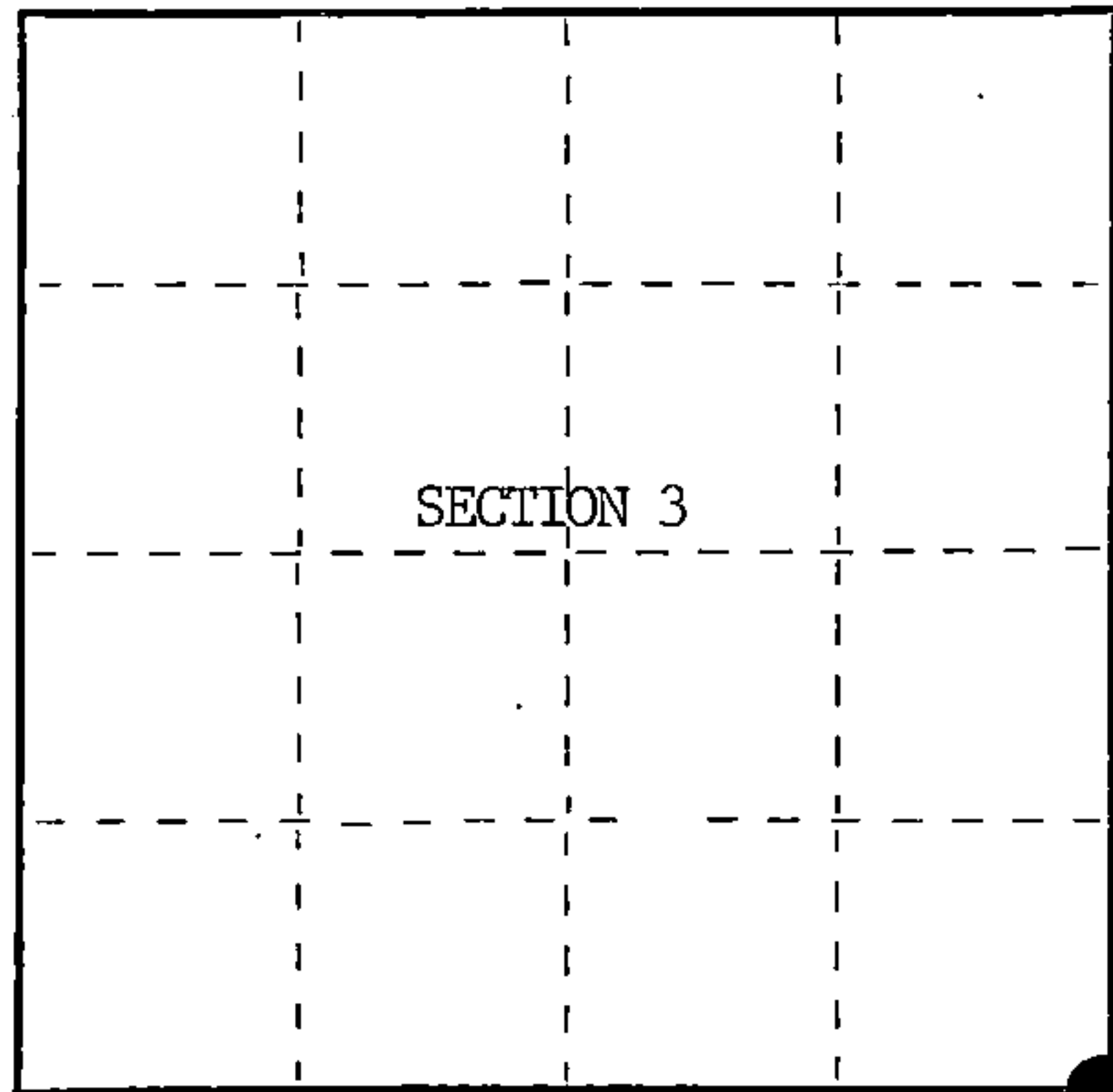
Resident witnesses:

Tony Tillman

State Plane Co-ordinates

N- 263,488.7930

E- 2,326,699.6160



○ = Corner monument restored.

History of original corner establishment:

Original Government Survey in 1865 by William E. Daugherty, and Alex McDill.

Corner restored on May 1st, 1974, by William B. Cochrane, a Registered
Land Surveyor with the U.S. Forest Service.

See Certified Land Corner Restoration Certificate #107232, filed in the
Registrar of Deeds Office, in the Forest County Courthouse.

Description of corner evidence found:

Found monument as described and in place, from which the following bear;

B. Spruce	4"	N23°E	20.88 feet
B. Spruce	6"	S50°E	6.69 feet
B. Spruce	4"	S26°W	29.27 feet
B. Spruce	4"	N83°W	12.08 feet
Steel Sign Post		NW	0.50 feet

Description of monument and accessories I established to perpetuate the original location of this corner.

Blazed and scribed the following new bearing trees;

Balsam	10"	N35°E	39.40 feet
Spruce	5"	S24°E	41.41 feet
Spruce	6"	S49°W	47.80 feet

Dated at Hiles, Wis., this 27th day of February, 1986

Signature William B. Cochrane Title Land Surveyor Registration No. S-1107
(County Surveyor, Registered Land Surveyor, or other duly authorized official)

Office of Register of Deeds, County of Forest, I hereby certify that the within
instrument was filed in this office for record on the 11th day of March, 1987
at 3:30 o'clock P. M.

Paul Aschenbrenner
(Register of Deeds)

By _____ Deputy

439 14030000

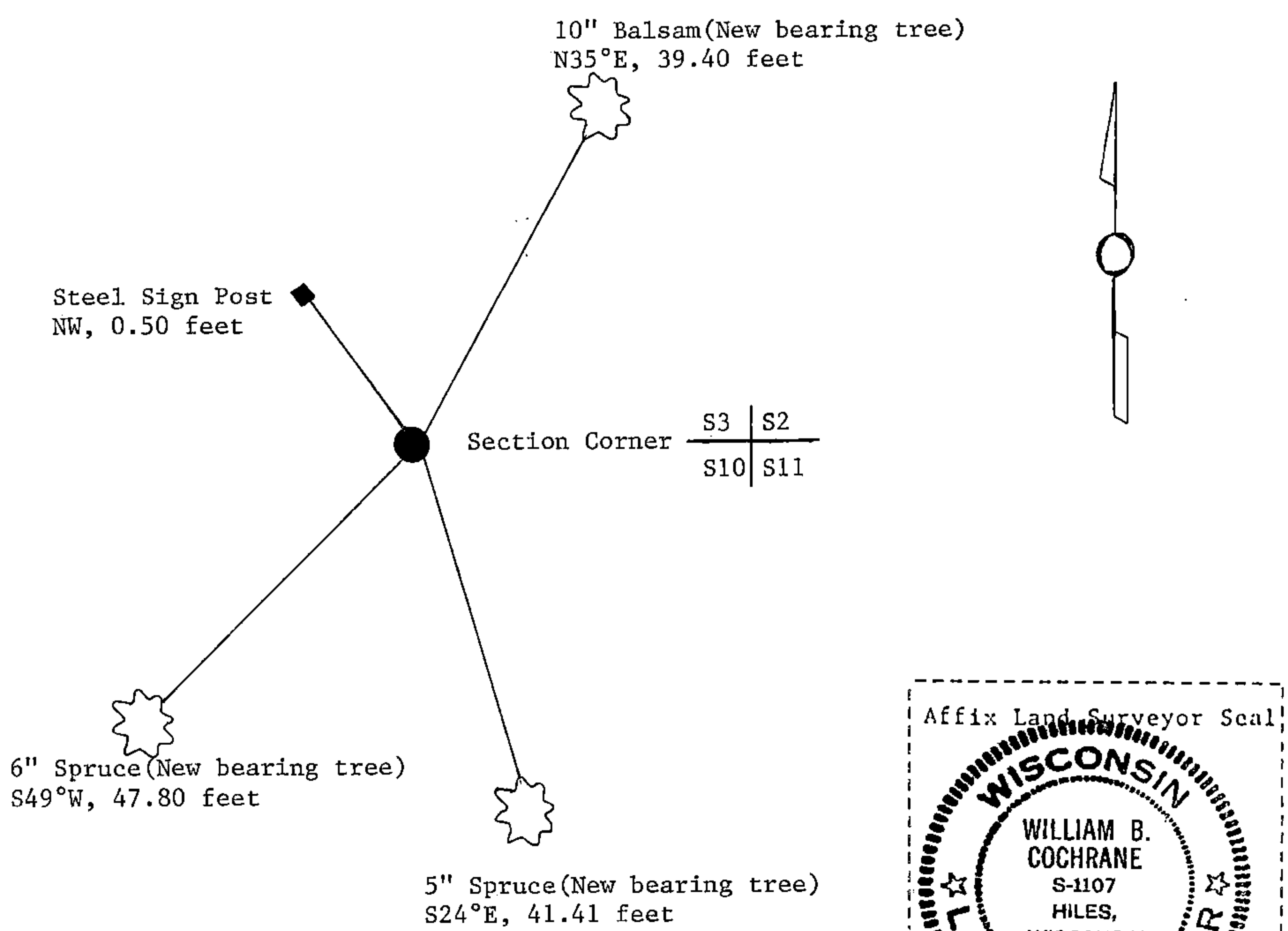
(e) Describe any material discrepancy between the location of the corner as restored or reestablished and the location of that corner as previously restored or reestablished by distance and direction. Show the discrepancy on the plan view drawing under (d), above. Show the distances between the corner as previously restored or reestablished and (1) the corner as restored or reestablished, and (2) to at least 2 of the witness monuments shown on the drawing in (d), above.

See drawing below.

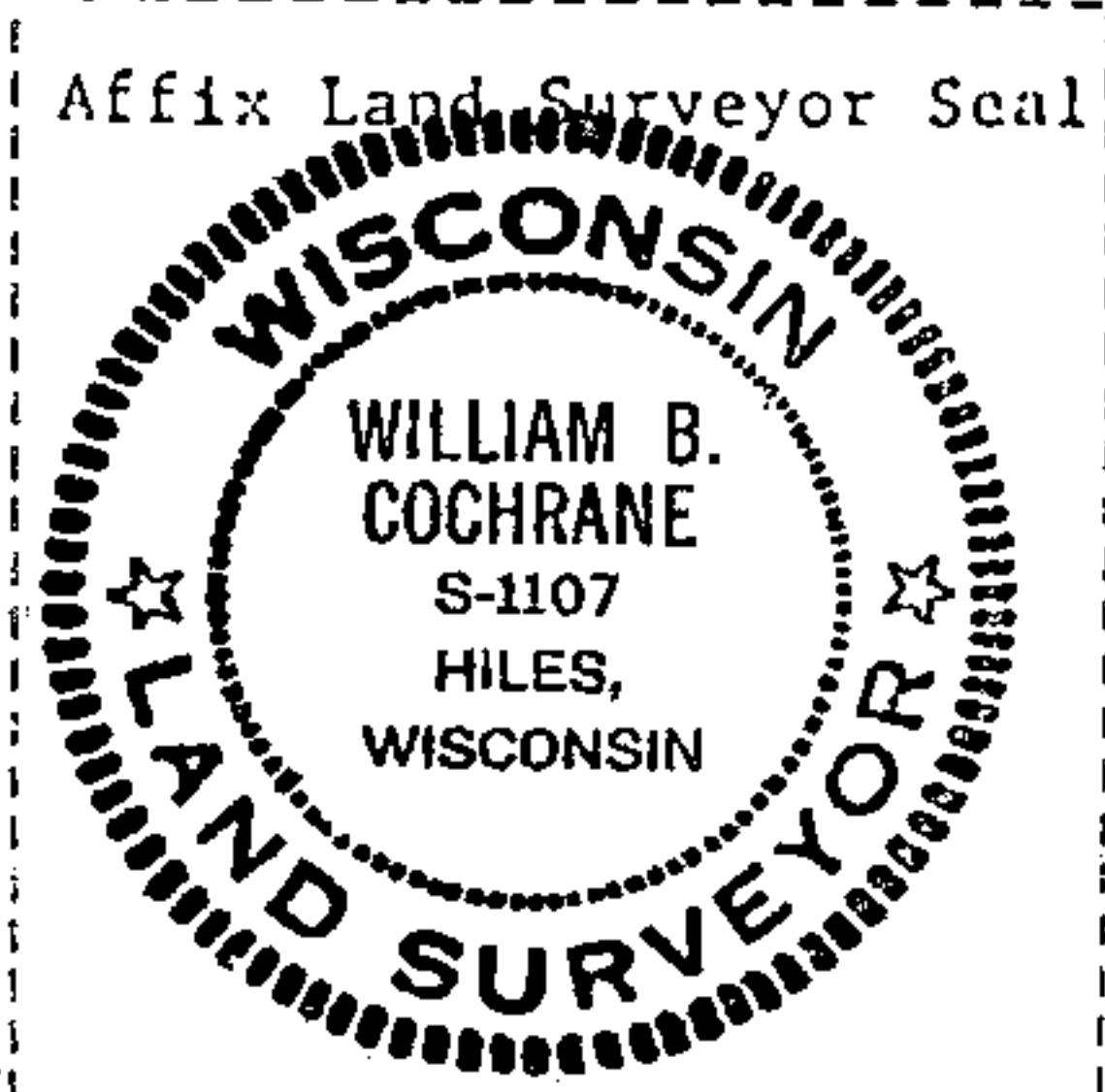
(f) Was the corner restored through acceptance of (1) an obliterated evidence location, or, (2) a found perpetuated location?

Restored through acceptance of a found perpetuated location.

(g&h) Was the corner reestablished through lost corner proportionate methods? If so, show the method, including the directions and distances to other public land survey corners used as evidence or used for proportioning in determining the corner location?



(i) 1. William B. Cochrane
(type or print name) certify that the corner location shown on this record was determined by me or under my direction and control and that this U.S. Public Land Survey Monument Record is correct and complete to the best of my knowledge and belief.



William B. Cochrane October 7, 1986
Signature Date

Survey requested by: Dave Arger 3-9-87
District Ranger Date