

U.S. PUBLIC LAND SURVEY MONUMENT RECORD

Index No. C-9

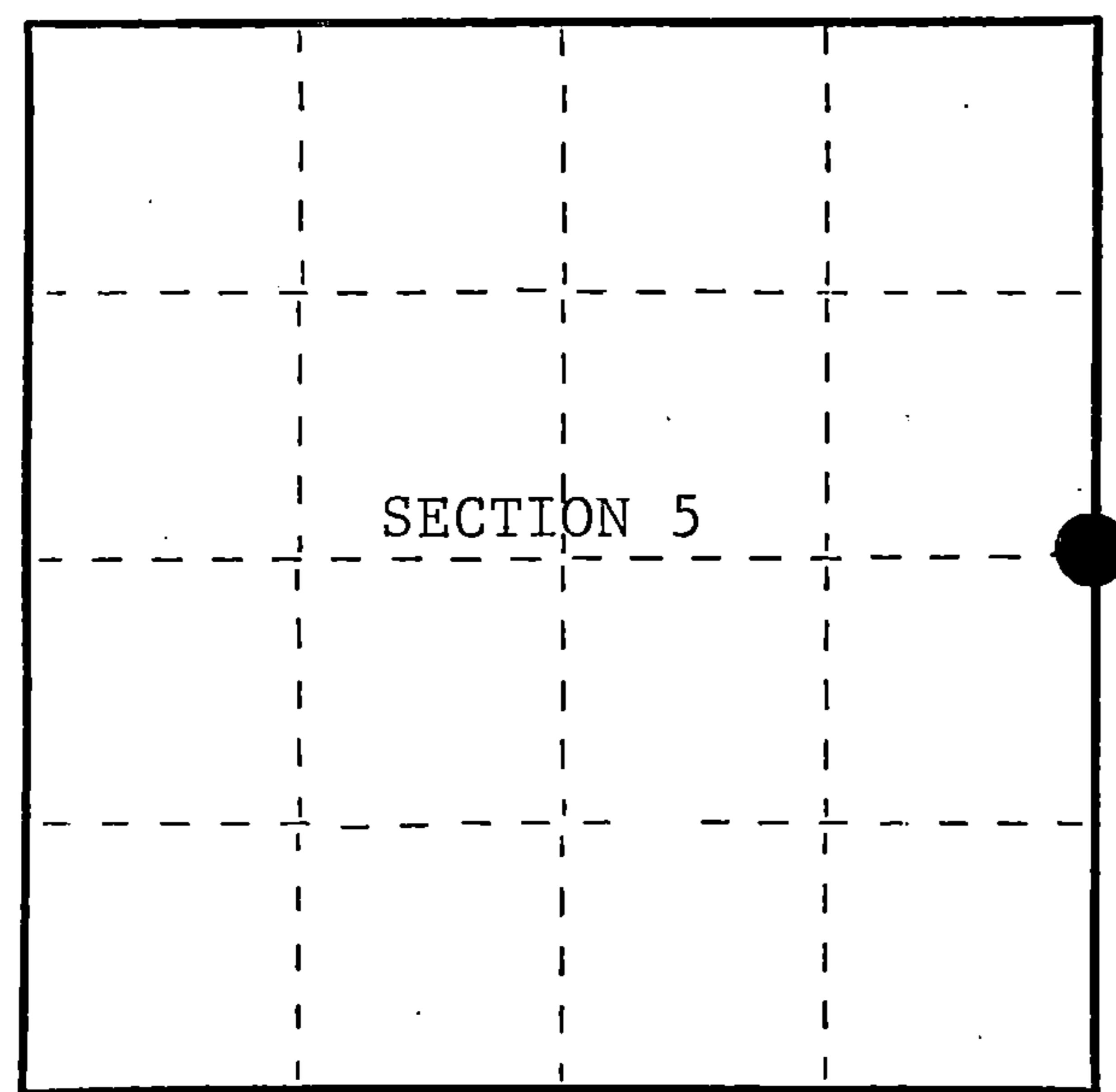
State of Wisconsin }
County of Forest } ss.

I William B. Cochrane, do hereby
certify that on the 20th day
of August, 1985, I found
evidence of the East Quarter
corner of Section 5
Township 39 North, Range
14 East, Fourth Principal Meridian,
as described hereon; and that from this evidence
I established a new monument and accessories
as described hereon to perpetuate the original
location of this corner.

Resident witnesses:

Tony Tillman

State Plane Co-ordinates
N- 265,825.2023
E-2,316,421.2010



○ = Corner monument restored.

History of original corner establishment:

Original Government Survey in 1865 by William E. Daugherty and Alex McDill.
South corrected between Sections 4 and 5, at 41.40 chains, set Quarter Section
Post to Sections 4 and 5, from which the following bear;

W. Pine	25"	N40°W	17 lks.
W. Pine	25"	S40°E	43 lks.

Description of corner evidence found:

No corner evidence was recovered.

The corner position is re-established at proportionate distance and on line
between the Northeast and Southeast Section Corners of Section 5.

Description of monument and accessories I established to perpetuate the original location of this corner.

At the corner position, set a 2½ inch diameter aluminum pipe monument, 3 feet long,
2½ feet in the ground, with an aluminum cap stamped; T39N, R14E, 1/4, S4, S5, 1986,
S-1107. From which the following new blazed and scribed bearing trees bear;

Tamarack	12"	S80°W	101.70 feet
Tamarack	12"	N31°W	93.09 feet
Steel Sign Post		West	0.50 feet

Dated at Hiles, Wis., this 11th day of February, 1987

Signature William B. Cochrane Title Land Surveyor Registration No. S-1107
(County Surveyor, Registered Land Surveyor, or other duly authorized official)

Office of Register of Deeds, County of Forest, I hereby certify that the within
instrument was filed in this office for record on the 11th day of March, 1987
at 3:30 o'clock P. M.

Paul Aschenbrenner
(Register of Deeds)

By Deputy

FORM NO. 985-A
H.C. Miller Company
MILWAUKEE, WISCONSIN

Stock No. 26273

DOCUMENT NUMBER 132319

439140526007

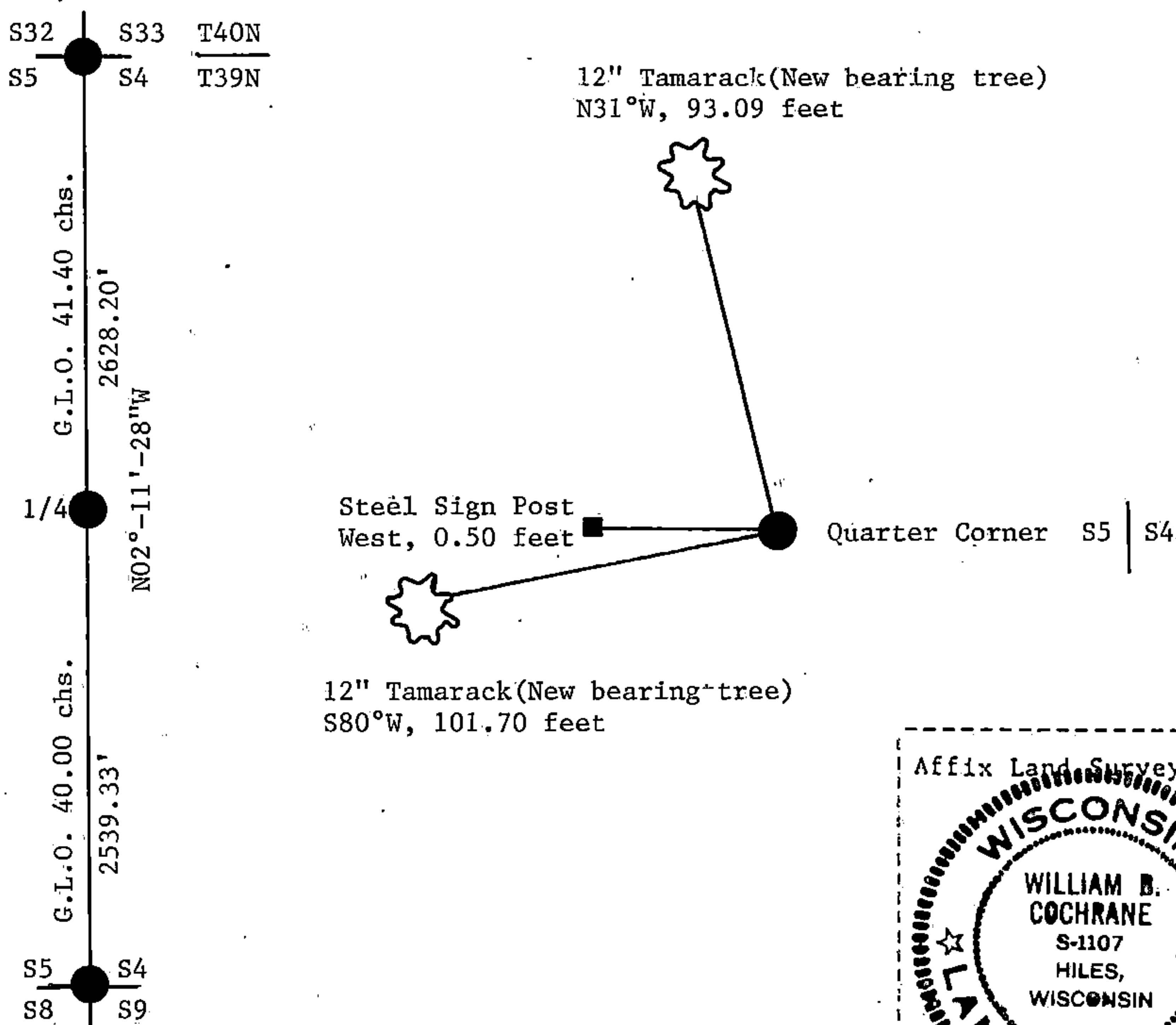
- (e) Describe any material discrepancy between the location of the corner as restored or reestablished and the location of that corner as previously restored or reestablished by distance and direction. Show the discrepancy on the plan view drawing under (d), above. Show the distances between the corner as previously restored or reestablished and (1) the corner as restored or reestablished, and (2) to at least 2 of the witness monuments shown on the drawing in (d), above.

See drawing below.

- (f) Was the corner restored through acceptance of (1) an obliterated evidence location, or, (2) a found perpetuated location?

This corner position was re-established using State Plane Co-ordinates computed from Aerial Photography and a Global Positioning Satellite Survey. The computed corner position was located in the field using a North Seeking Gyro, an Electronic Distance Meter and/or a steel tape.

- (g&h) Was the corner reestablished through lost corner proportionate methods? If so, show the method, including the directions and distances to other public land survey corners used as evidence or used for proportioning in determining the corner location?



- (i) I, William B. Cochrane
(type or print name) certify that the corner location shown on this record was determined by me or under my direction and control and that this U.S. Public Land Survey Monument Record is correct and complete to the best of my knowledge and belief.

William B. Cochrane February 11, 1987
Signature Date

Survey requested by: [Signature] 3-9-87
District Ranger Date