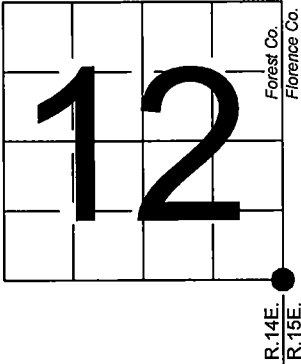


U. S. PUBLIC LAND SURVEY MONUMENT RECORD

NOTE: This form is intended and designed to fulfill all requirements of Wisconsin Administrative Code, Chapter A-E 7.08 U.S. Public Land Survey Monument Record (3) (a-i)

A-E 7.08(3)(a) Identity of corner:
Southeast Corner Section 12,
Township 39 North, Range 14 East
of the Fourth Principal Meridian,
Town of Popple River, Forest County,
Wisconsin

WISCRS - FOREST COUNTY
N: 678,952.443 USft (XXX,XXX.XXX)
E: 894,207.008 USft (XXX,XXX.XXX)
Datum: NAD83 (2011)
GNSS Method RTK
GNSS Control WISCORS VRS



The coordinate value shown has been verified by the average of two or more GPS observations at a markedly different time. Coordinates shown in parenthesis are previously published values.

A-E 7.08(3)(b)

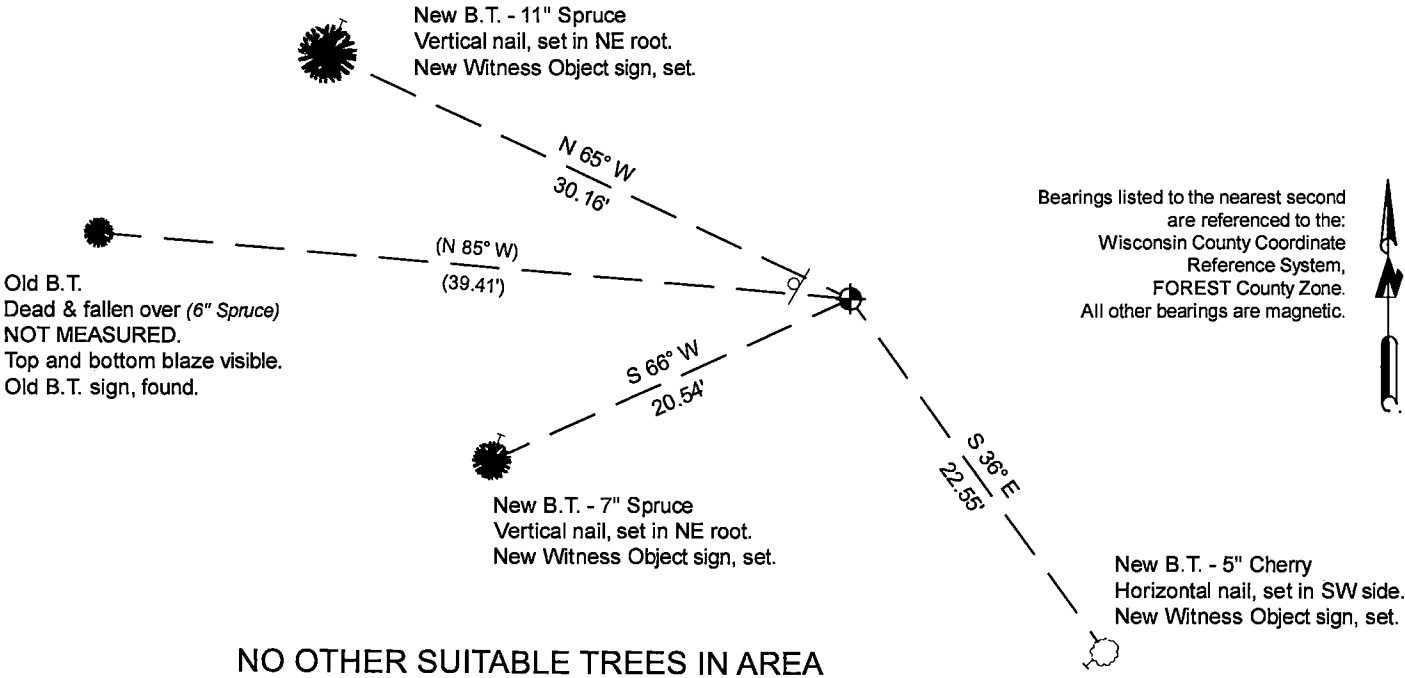
Original Surveyor: Artemas Curtis - May 1858
Tamarac 8 - S 42° W, 69 Links, Tamarac 10 - S 25° E, 31 Links, Tamarac 6 - N 3° W, 79 Links

See previous U.S. Public Land Survey Monument Record - J-1 (Florence Co.) - March 19, 1986 - Surveyor 1107 - William B. Cochrane - THENCE:

- 1988 - Surveyor 1107 - William B. Cochrane - indicates this position as "2 1/2" aluminum pipe monument 36 inches long with an aluminum cap " on Forest Co. record Map #391413-19890504.

November 22, 2024 - In performing the 2024 - Forest County - "PLSS Corner Remonumentation and GPS Services" project, I found a 2.25" diameter aluminum pipe monument with a 3.25" diameter aluminum cap stamped to identify the corner. The monument is on the edge of a spruce marsh, and extends ±8" above grade. I found 1 of Cochrane's bearing trees dead and fallen over. I established 3 new reference monuments as shown below.

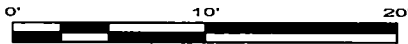
A-E 7.08(3)(c)(d) Plan view of corner with references to at least 4 witness monuments.



LEGEND

Monument sizes = outside diameter measurements.

- ⊕ This Corner
- Steel post, found ±2.5 feet NW of Corner
- ⊖ Galvanized nail, set or nail found as shown



A-E 7.08(3)(e) 1858 Surveyor set a post, 1986 Surveyor set a 2 1/2" diameter aluminum pipe monument, with an aluminum cap stamped to identify corner, 1988 Surveyor found the same. In 2024, I found a 2.25" diameter aluminum pipe monument with a 3.25" diameter aluminum cap stamped to identify the corner.

A-E 7.08(3)(f) I accept this monument in good faith as a FOUND PERPETUATED LOCATION of the corner.

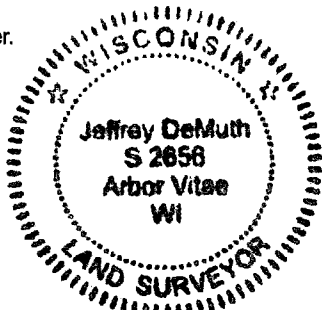
A-E 7.08(3)(g)(h) This corner was not determined through lost-corner-proportionate methods.

A-E 7.08(3)(i) I, Jeffrey L. DeMuth, Professional Land Surveyor No. S-2656, hereby certify that the corner location on this record was determined by me or under my direction and control, and that this U.S. Public Land Survey Monument Record is correct and complete to the best of my knowledge, and belief.

SIGNATURE

November 26, 2024

DATE



43914120000

43914120000

J25