

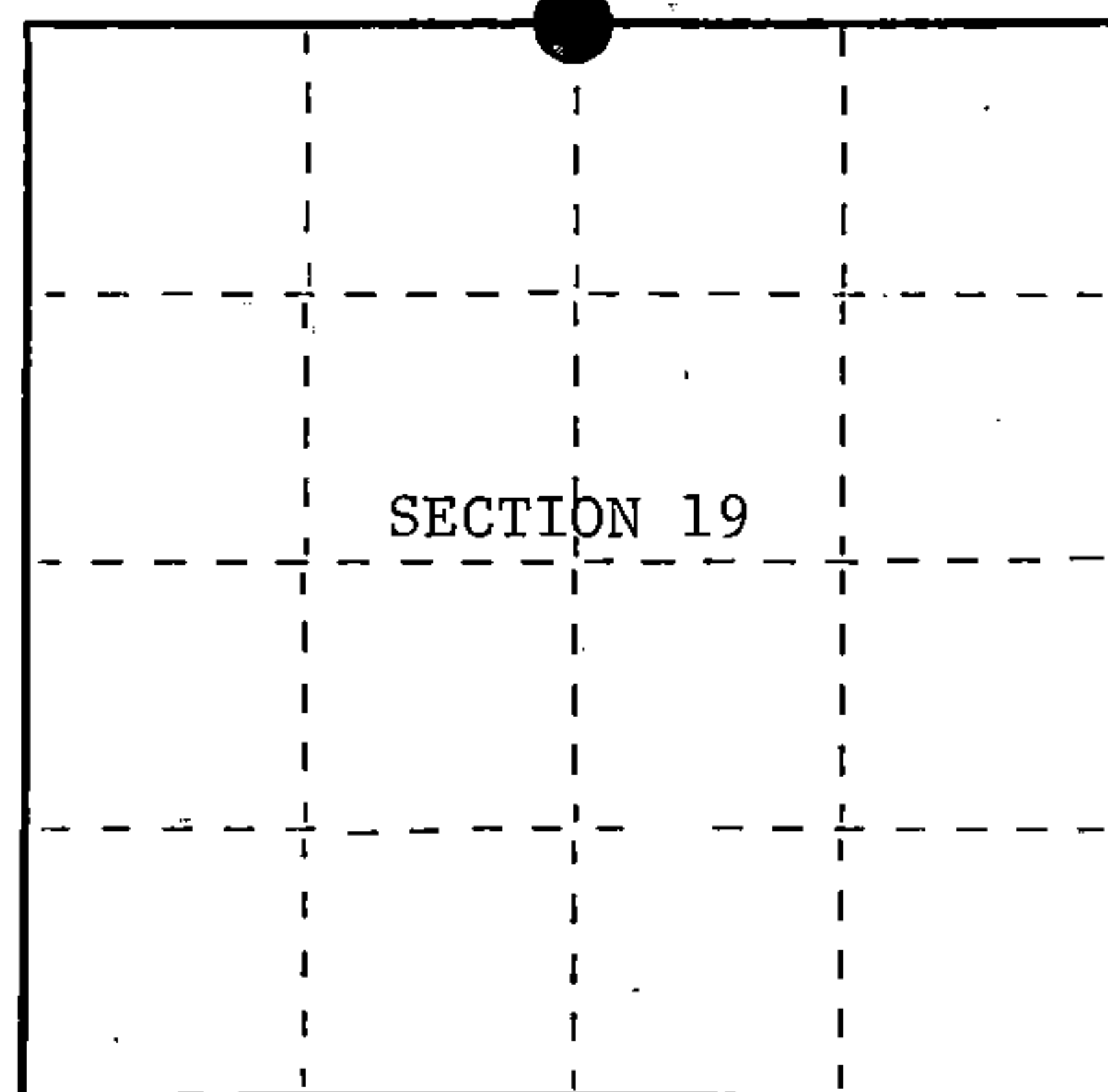
U.S. PUBLIC LAND SURVEY MONUMENT RECORD

Index No. N-3

State of Wisconsin }
County of Forest } ss.

I, William B. Cochran, do hereby
certify that on the 21st day
of August, 1986, I found
evidence of the North Quarter
corner of Section 19
Township 39, North, Range
14 East, Fourth Principal Meridian,
as described hereon; and that from this evidence
I established a new monument and accessories
as described hereon to perpetuate the original
location of this corner.

Resident witnesses:

Tony TillmanState Plane Co-ordinates
N- 252,380.2635
E-2,308,715.2760

○ = Corner monument restored.

History of original corner establishment:

Original Government Survey in 1865 by William E. Daugherty and Alex McDill. In 1929,
Melindy, a local surveyor, re-established the corner position. At the corner position,
set a wood post, from which the following bear;

Poplar	6"	N 7°E	23.10 feet
Poplar	6"	N85°W	14.40 feet

Set stones around post.

Description of corner evidence found:

Found pile of stones, from which the following bear;

Poplar(stump)	N 7°E	23.10 feet
Poplar(stump)	N85°W	14.40 feet

I accept this evidence as the best available evidence for restoring the corner position.

Description of monument and accessories I established to perpetuate the original location of this corner.

From bearing tree evidence, set a 2½ inch diameter aluminum pipe monument, 3 feet
long, 2½ feet in the ground, with an aluminum cap stamped; T39N, R14E, 1/4, S18, S19,
1986, S-1107. From which the following new blazed and scribed bearing trees bear;

Spruce	4"	S12°E	10.58 feet
Balsam	7"	N79°W	37.73 feet
Steel Sign Post	NW		1.00 feet

Monument is surrounded by stone.

Dated at Hiles, Wis., this 9th day of February, 1987Signature William B. Cochran Title Land Surveyor Registration No. S-1107
(County Surveyor, Registered Land Surveyor, or other duly authorized official)

Office of Register of Deeds, County of Forest, I hereby certify that the within
instrument was filed in this office for record on the 11th day of March, 1987
at 3:30 o'clock P. M.

Paul A. Schenck
(Register of Deeds)

By _____ Deputy

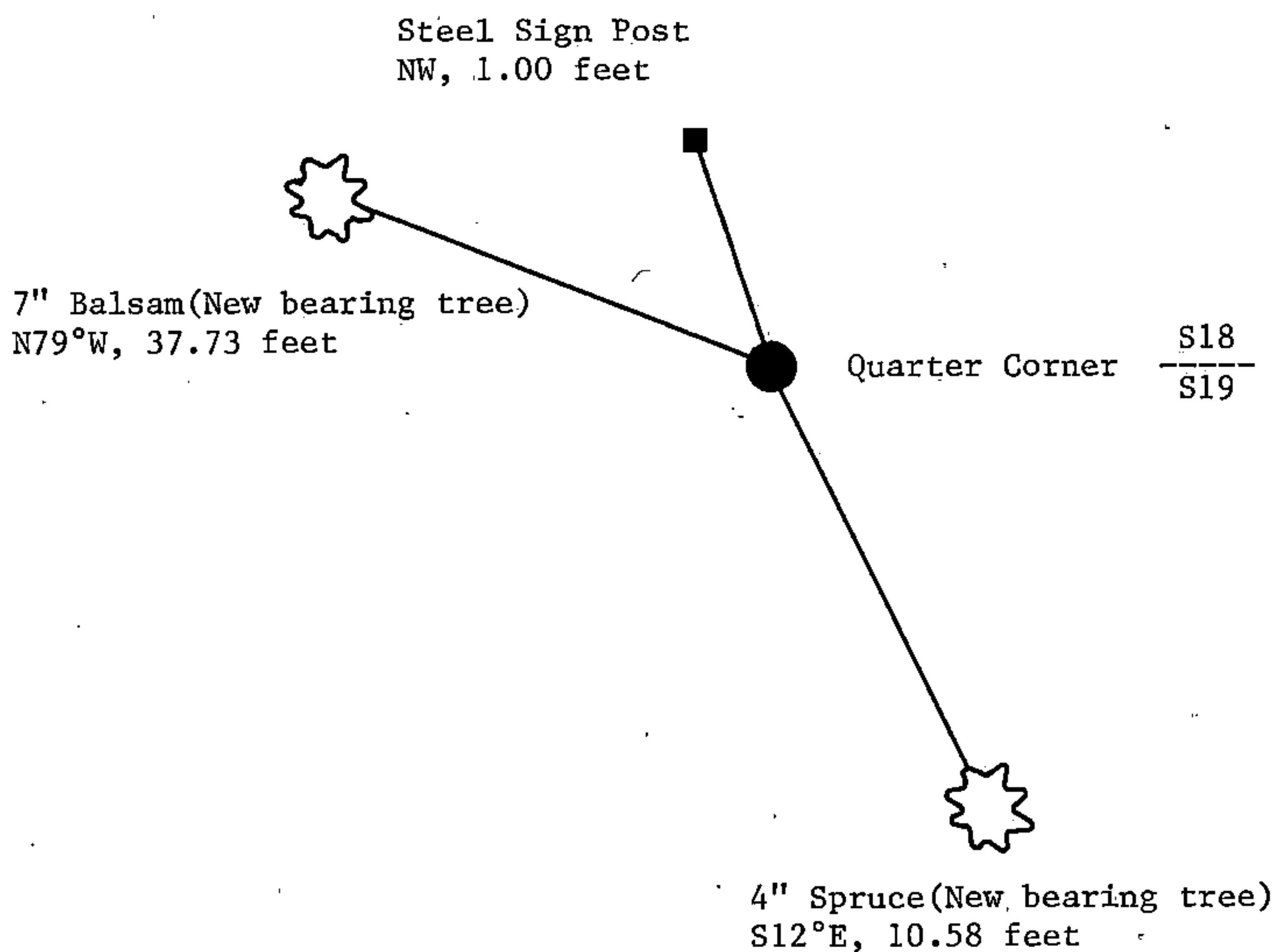
(e) Describe any material discrepancy between the location of the corner as restored or reestablished and the location of that corner as previously restored or reestablished by distance and direction. Show the discrepancy on the plan view drawing under (d), above. Show the distances between the corner as previously restored or reestablished and (1) the corner as restored or reestablished, and (2) to at least 2 of the witness monuments shown on the drawing in (d), above.

See drawing below.

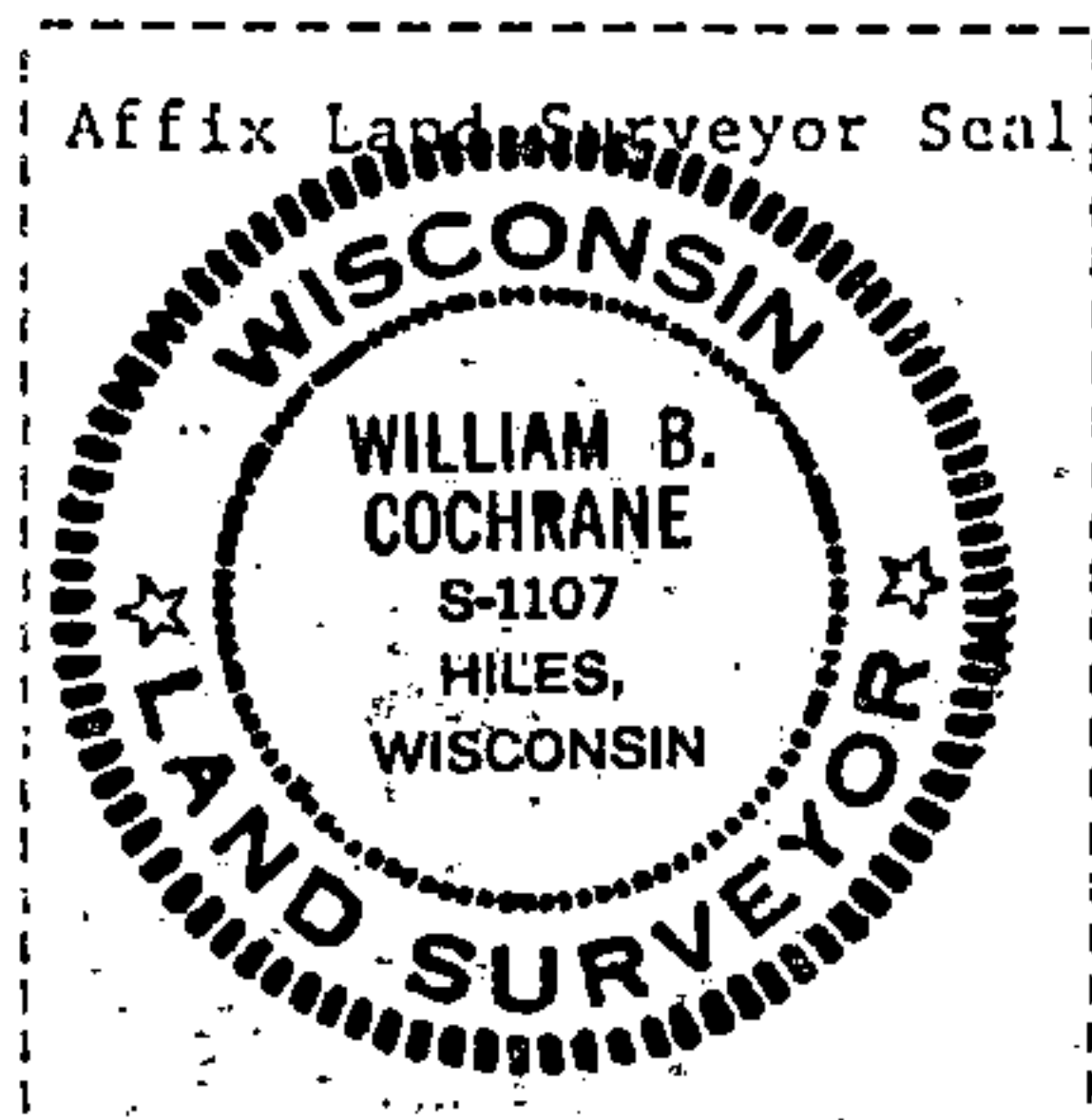
(f) Was the corner restored through acceptance of (1) an obliterated evidence location, or, (2) a found perpetuated location?

Restored from accepted evidence:

(g&h) Was the corner reestablished through lost corner proportionate methods? If so, show the method, including the directions and distances to other public land survey corners used as evidence or used for proportioning in determining the corner location?



(i) 1. William B. Cochrane
(type or print name) certify that the corner location shown on this record was determined by me or under my direction and control and that this U.S. Public Land Survey Monument Record is correct and complete to the best of my knowledge and belief.



William B. Cochrane February 9, 1987
Signature Date

Survey requested by [Signature] 3-9-87

District Ranger

Date