

U.S. PUBLIC LAND SURVEY MONUMENT RECORD

Index No. R-23

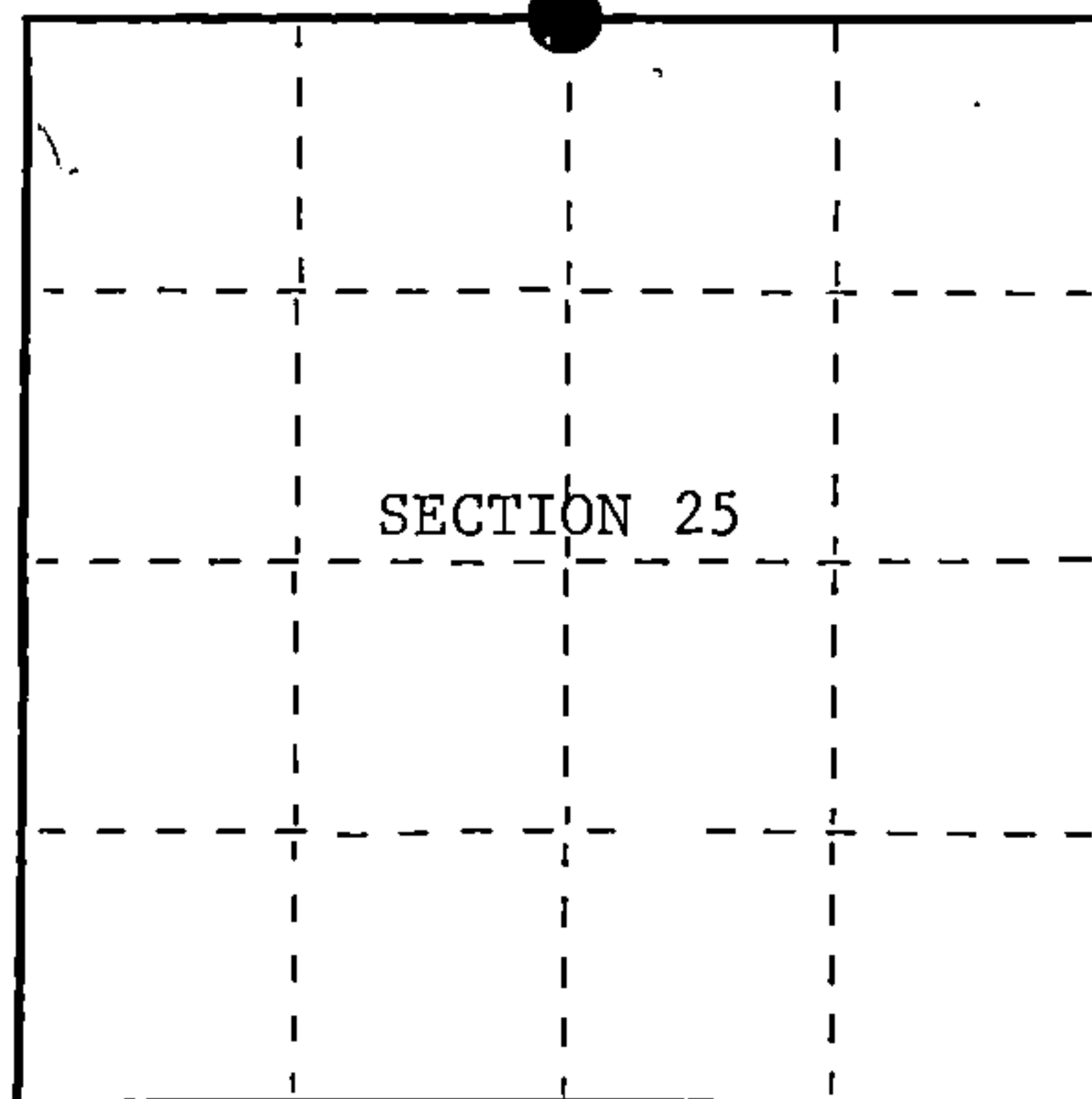
State of Wisconsin }
County of Forest } ss.

I, William B. Cochran, do hereby certify that on the 10th day of June, 1986, I found evidence of the North Quarter corner of Section 25 Township 39, North, Range 14 East, Fourth Principal Meridian, as described hereon; and that from this evidence I established a new monument and accessories as described hereon to perpetuate the original location of this corner.

Resident witnesses:

David Brownell

State Plane Co-ordinates
N- 247,930.9678
E- 2,334,958.8730



○ = Corner monument restored.

History of original corner establishment:

Original Government Survey in 1865 by William E. Daugherty and Alex McDill. East between Sections 24 and 25, at 40 chs., set Quarter Section Post to Sections 24 and 25, from which the following bear;

Hemlock	10"	N40°W	13 lks.
Sugar	15"	S38°E	19 lks.

Description of corner evidence found:

Found a 3" diameter Cedar Post, 3 feet AGL, with red paint on top, from which a Sugar stump hole bears S38°E, 19 lks.

I accept the post in concurrence with original bearing tree evidence as the original corner position.

Description of monument and accessories I established to perpetuate the original location of this corner.

In place of wood post, set a 2½ inch diameter aluminum pipe monument, 3 feet long, 2½ feet in the ground, with an aluminum cap stamped; T39N, R14E, 1/4, S24, S25, 1986, S-1107. From which the following new blazed and scribed bearing trees bear;

Oak	14"	S10°E	11.65 feet
Oak	10"	N86°W	12.76 feet
Steel Sign Post		East	1.00 feet

Dated at Hiles, Wis., this 27th day of January, 1987.

Signature William B. Cochran Title Land Surveyor Registration No. S-1107
(County Surveyor, Registered Land Surveyor, or other duly authorized official)

Office of Register of Deeds, County of Forest, I hereby certify that the within instrument was filed in this office for record on the 11th day of March, 1987 at 3:30 clock P. M.

Faul Aschenbrenner
(Register of Deeds)

By _____ Deputy

FORM NO. 985-A

H.C. Miller Company

Stock No. 26273

DOCUMENT NUMBER 132382

43914 290020

- (e) Describe any material discrepancy between the location of the corner as restored or reestablished and the location of that corner as previously restored or reestablished by distance and direction. Show the discrepancy on the plan view drawing under (d), above. Show the distances between the corner as previously restored or reestablished and (1) the corner as restored or reestablished, and (2) to at least 2 of the witness monuments shown on the drawing in (d), above.

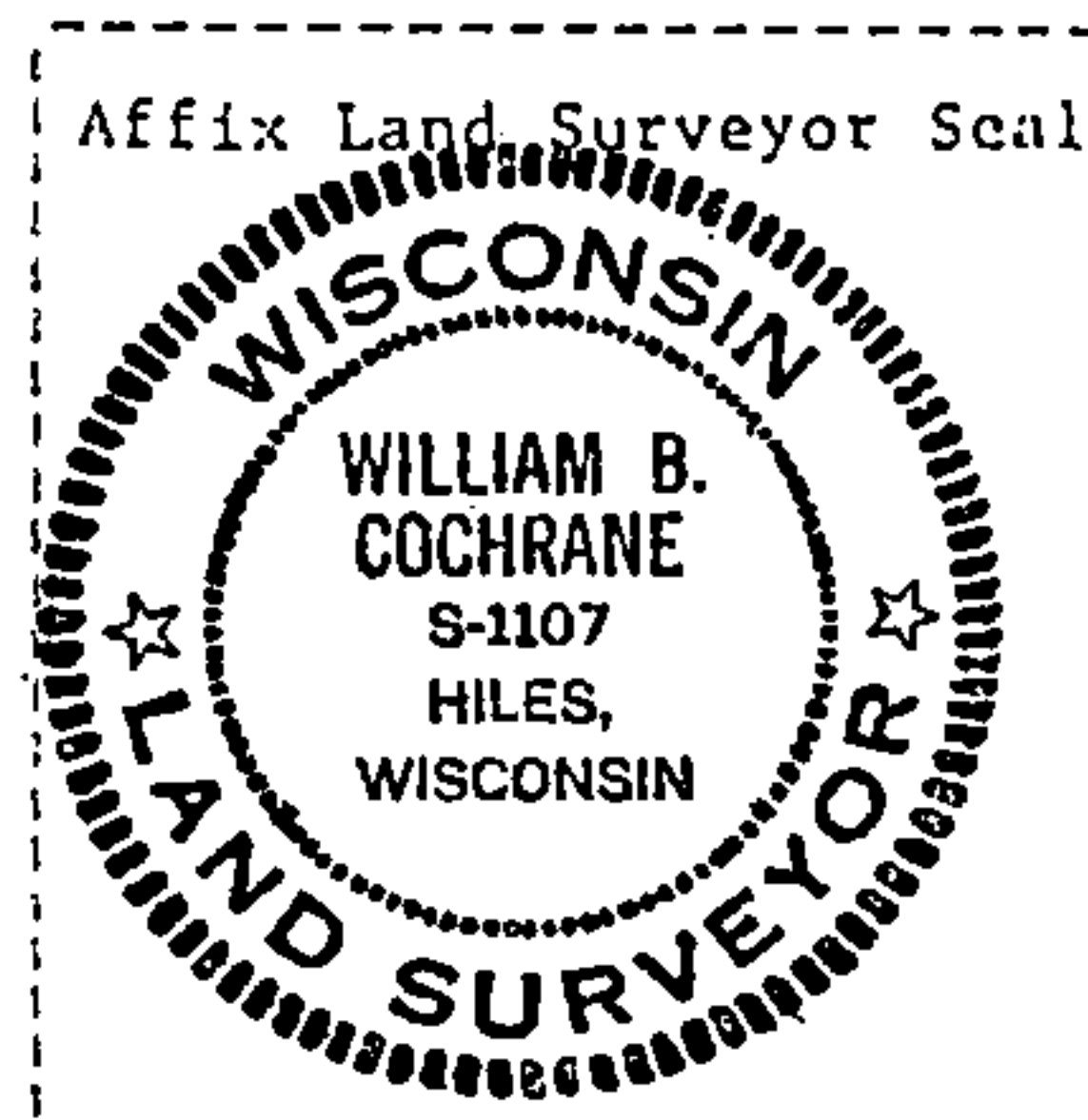
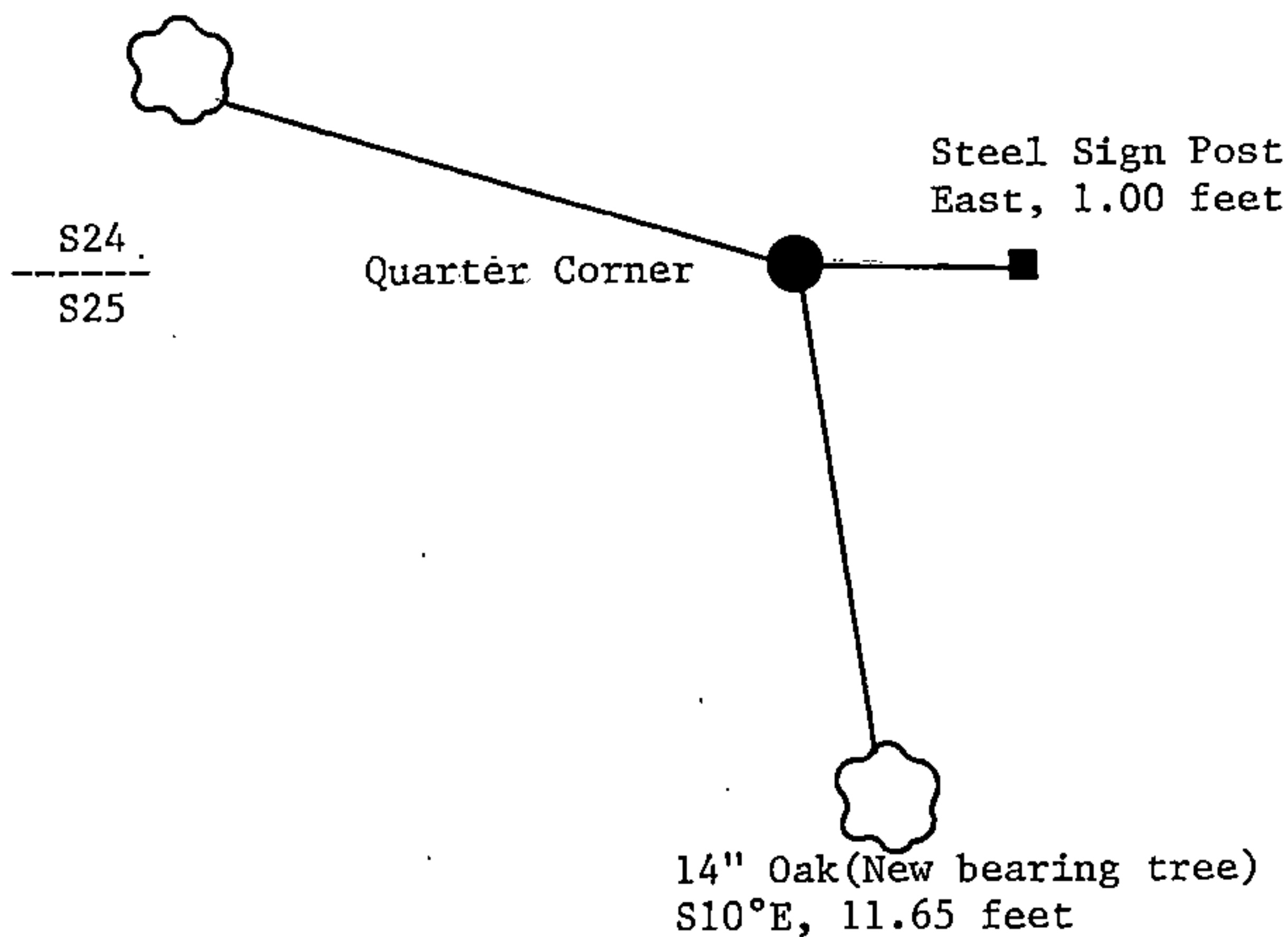
See drawing below.

- (f) Was the corner restored through acceptance of (1) an obliterated evidence location, or, (2) a found perpetuated location?

Restored from original evidence.

- (g&h) Was the corner reestablished through lost corner proportionate methods? If so, show the method, including the directions and distances to other public land survey corners used as evidence or used for proportioning in determining the corner location?

10" Oak(New bearing tree)
N86°W, 12.76 feet



- (i) I, William B. Cochrane
(type or print name) certify that the corner location shown on this record was determined by me or under my direction and control and that this U.S. Public Land Survey Monument Record is correct and complete to the best of my knowledge and belief.

William B. Cochrane January 27, 1987
Signature Date

Survey requested by: Edward [unclear] 3-9-87

District Ranger

Date