

U. S. PUBLIC LAND SURVEY MONUMENT RECORD

NOTE: This form is intended and designed to fulfill all requirements of Wisconsin Administrative Code, Chapter A-E 7.08 U.S. Public Land Survey Monument Record (3) (a-i)

A-E 7.08(3)(a) Identity of corner:
Witness to Meander Corner, East line Section 24,
SOUTH SIDE of peninsula - Lake Long Lake,
Township 39 North, Range 14 East
of the Fourth Principal Meridian,
Town of Popple River, Forest County, Wisconsin

WISCRS - FOREST COUNTY
N: 670,369.009 USft (XXX,XXX.XXX)
E: 894,204.795 USft (XXX,XXX.XXX)
Datum: NAD83 (2011)
GNSS Method RTK
GNSS Control WISCORS VRS



The coordinate value shown has been verified by the average of two or more GPS observations at a markedly different time. Coordinates shown in parenthesis are previously published values.

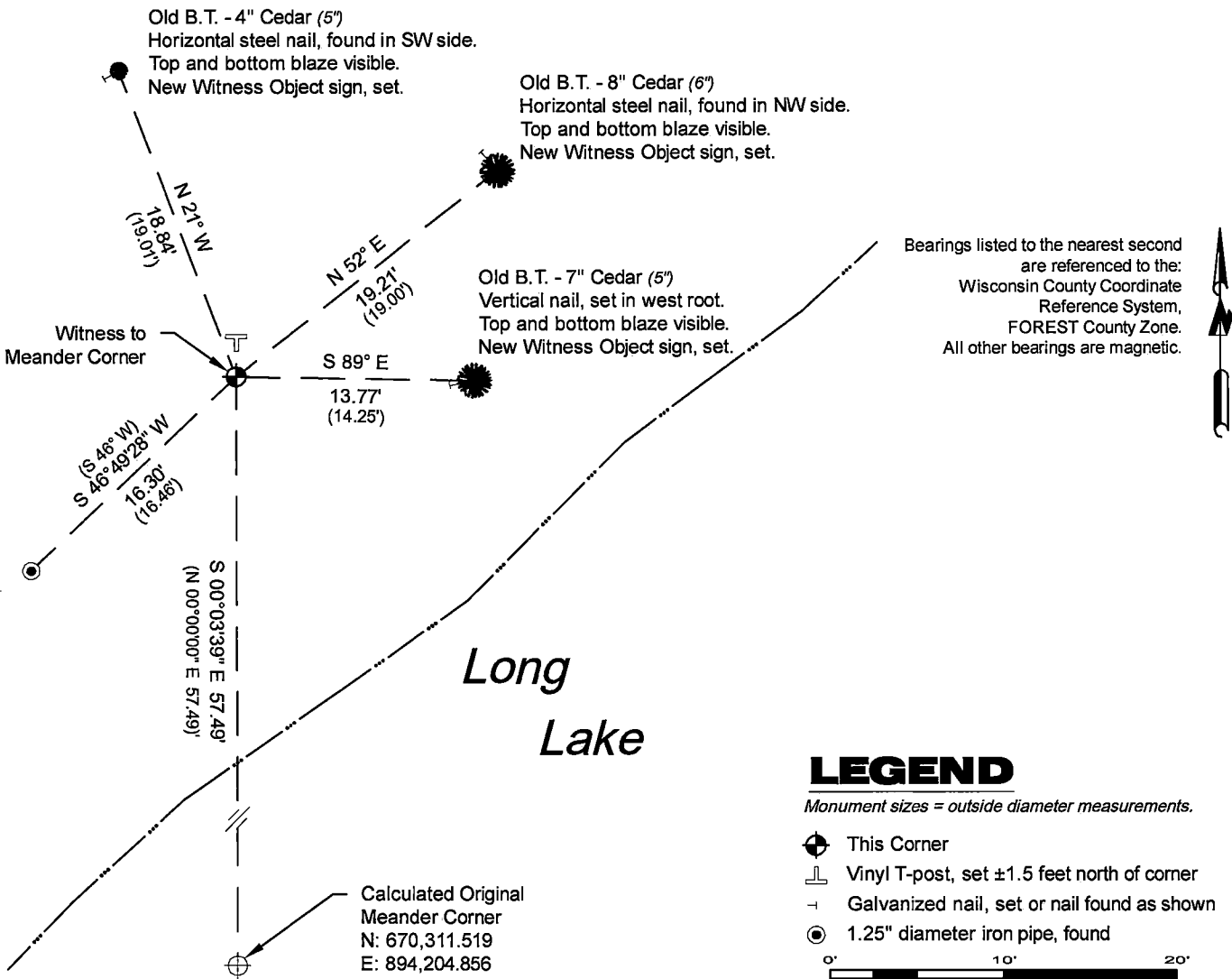
A-E 7.08(3)(b)

Original Surveyor: Artemas Curtis - May 1858
Cedar 6 - West, 17 Links, Tamarac 6 - N 16° E, 47 Links

See previous U.S. Public Land Survey Monument Record - P,Q-1 (Florence Co.) - April 24, 2008 - Surveyor 2197 - Michael A. Tremi
THENCE:

November 20, 2024 - In performing the 2024 - Forest County - "PLSS Corner Remonumentation and GPS Services" project, I found a 2.25" diameter aluminum pipe monument with a 3.25" diameter aluminum cap stamped to identify the witness corner. The monument is in a cedar swamp and extends ±8" above grade. I also found 3 of Tremi's bearing trees alive and in good condition, and his iron pipe reference monument. I established 0 new reference monuments as shown below.

A-E 7.08(3)(c)(d) Plan view of corner with references to at least 4 witness monuments.



A-E 7.08(3)(e) 1858 Surveyor set a post, 2008 Surveyor set a witness to the Meander Corner, being a 2 1/2" Forest County aluminum pipe monument. In 2024, I found a 2.25" diameter aluminum pipe monument with a 3.25" diameter aluminum cap stamped to identify the witness corner.

A-E 7.08(3)(f) I accept this monument in good faith as a FOUND PERPETUATED WITNESS to the corner.

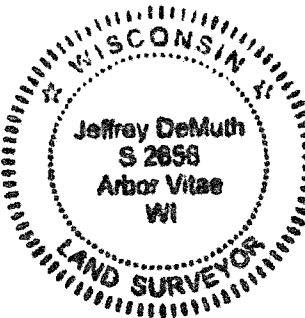
A-E 7.08(3)(g)(h) This corner was previously determined through lost-corner-proportionate methods.

A-E 7.08(3)(i) I, Jeffrey L. DeMuth, Professional Land Surveyor No. S-2656, hereby certify that the corner location on this record was determined by me or under my direction and control, and that this U.S. Public Land Survey Monument Record is correct and complete to the best of my knowledge, and belief.

SIGNATURE

November 26, 2024

DATE



43914241700

43914241700

Q25