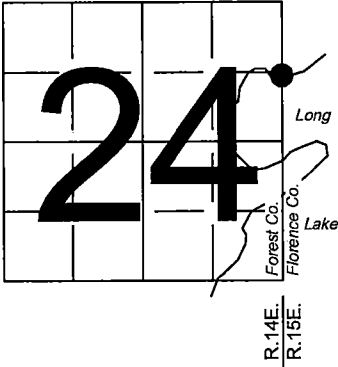


U. S. PUBLIC LAND SURVEY MONUMENT RECORD

NOTE: This form is intended and designed to fulfill all requirements of Wisconsin Administrative Code, Chapter A-E 7.08 U.S. Public Land Survey Monument Record (3) (a-i)

A-E 7.08(3)(a) Identity of corner:  
Meander Corner, East line Section 24,  
NORTH SIDE of Long Lake,  
Township 39 North, Range 14 East  
of the Fourth Principal Meridian,  
Town of Popple River, Forest County, Wisconsin

WISCRS - FOREST COUNTY  
N: 672,189.659 USft (XXX,XXX.XXX)  
E: 894,202.907 USft (XXX,XXX.XXX)  
Datum: NAD83 (2011)  
GNSS Method RTK  
GNSS Control WISCORS VRS



The coordinate value shown has been verified by the average of two or more GPS observations at a markedly different time. Coordinates shown in parenthesis are previously published values.

A-E 7.08(3)(b)

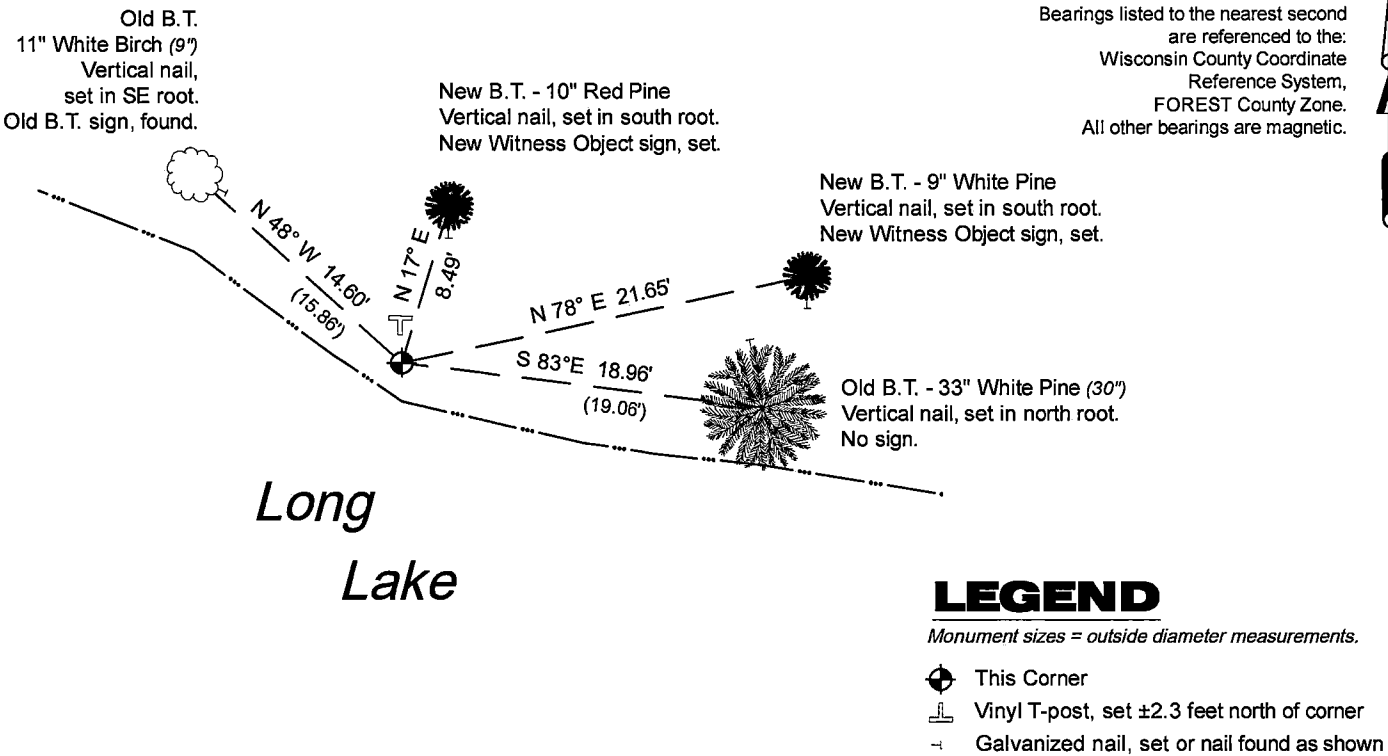
Original Surveyor: Artemas Curtis - May 1858  
Spruce 12 - S 84° W, 41 Links, Yellow Pine 14 - S 80° E, 38 Links

See previous U.S. Public Land Survey Monument Record - O,P-1 (Florence Co.) - January 15, 1986 - Surveyor 1107 - William B. Cochrane THENCE:

- 1988 - Surveyor 1107 - William B. Cochrane - indicates this position as "2 1/2" diameter galvanized iron pipe monument 36 inches long with brass cap" on Forest Co. record Map #391424-19890412.
- April 24, 2008 - Surveyor 2197 - Michael A. Trembl - indicates this position as "existing 2 1/2" U.S.F.S. galvanized iron pipe monument w/brass cap" on Florence Co. U.S. Public Land Survey Monument Record - P,Q-1

November 20, 2024 - In performing the 2024 - Forest County - "PLSS Corner Remonumentation and GPS Services" project, I found a 2.25" diameter galvanized iron pipe monument with a 3" diameter brass cap stamped to identify the corner. The monument is at the toe of a steep slope, ±2' from the shore of Long Lake, and extends ±20" above grade. I also found 2 of Cochrane's bearing trees alive and in good condition. I established 2 new reference monuments as shown below.

A-E 7.08(3)(c)(d) Plan view of corner with references to at least 4 witness monuments.



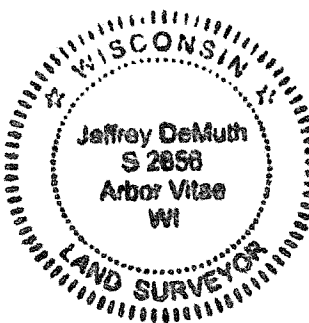
A-E 7.08(3)(e) 1858 Surveyor set a post, 1986 Surveyor found a 2" inside diameter galvanized iron pipe monument, 1988 Surveyor found a 2 1/2" diameter galvanized iron pipe monument 36 inches long with a brass cap, 2008 Surveyor found the same. In 2024, I found a 2.25" diameter galvanized iron pipe monument with a 3" diameter brass cap stamped to identify the corner.  
A-E 7.08(3)(f) I accept this monument in good faith as a FOUND PERPETUATED LOCATION of the corner.  
A-E 7.08(3)(g)(h) This corner was not determined through lost-corner-proportionate methods.

A-E 7.08(3)(i) I, Jeffrey L. DeMuth, Professional Land Surveyor No. S-2656, hereby certify that the corner location on this record was determined by me or under my direction and control, and that this U.S. Public Land Survey Monument Record is correct and complete to the best of my knowledge, and belief.

SIGNATURE

November 26, 2024

DATE



43914242700

43914242700

025