

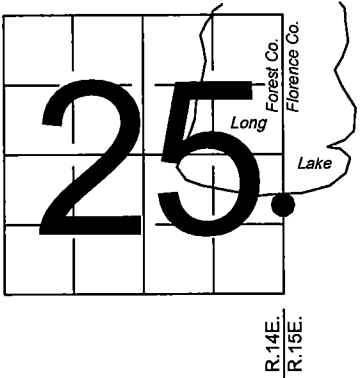
FILED ON:  
06/06/2025 03:26 PM  
CORTNEY BRITTEN CLEEREMAN  
REGISTER OF DEEDS  
FOREST COUNTY WI  
PAGES: 1

U.S. PUBLIC LAND SURVEY  
MONUMENT RECORD

NOTE: This form is intended and designed to fulfill all requirements of Wisconsin Administrative Code, Chapter A-E 7.08 U.S. Public Land Survey Monument Record (3) (a-l)

A-E 7.08(3)(a) Identity of corner:  
Meander Corner, East line Section 25,  
SOUTH SIDE of Long Lake,  
Township 39 North, Range 14 East  
of the Fourth Principal Meridian,  
Town of Popple River, Forest County, Wisconsin

WISCRS - FOREST COUNTY  
N: 664,763.607 USft (XXX,XXX.XXX)  
E: 894,182.597 USft (XXX,XXX.XXX)  
Datum: NAD83 (2011)  
GNSS Method RTK  
GNSS Control WISCORS VRS



The coordinate value shown has been verified by the average of two or more GPS observations at a markedly different time. Coordinates shown in parenthesis are previously published values.

A-E 7.08(3)(b)

Original Surveyor: Artemas Curtis - May 1858  
Tamarac 6 - S 41° W, 27 Links, Tamarac 8 - S 71° E, 44 Links

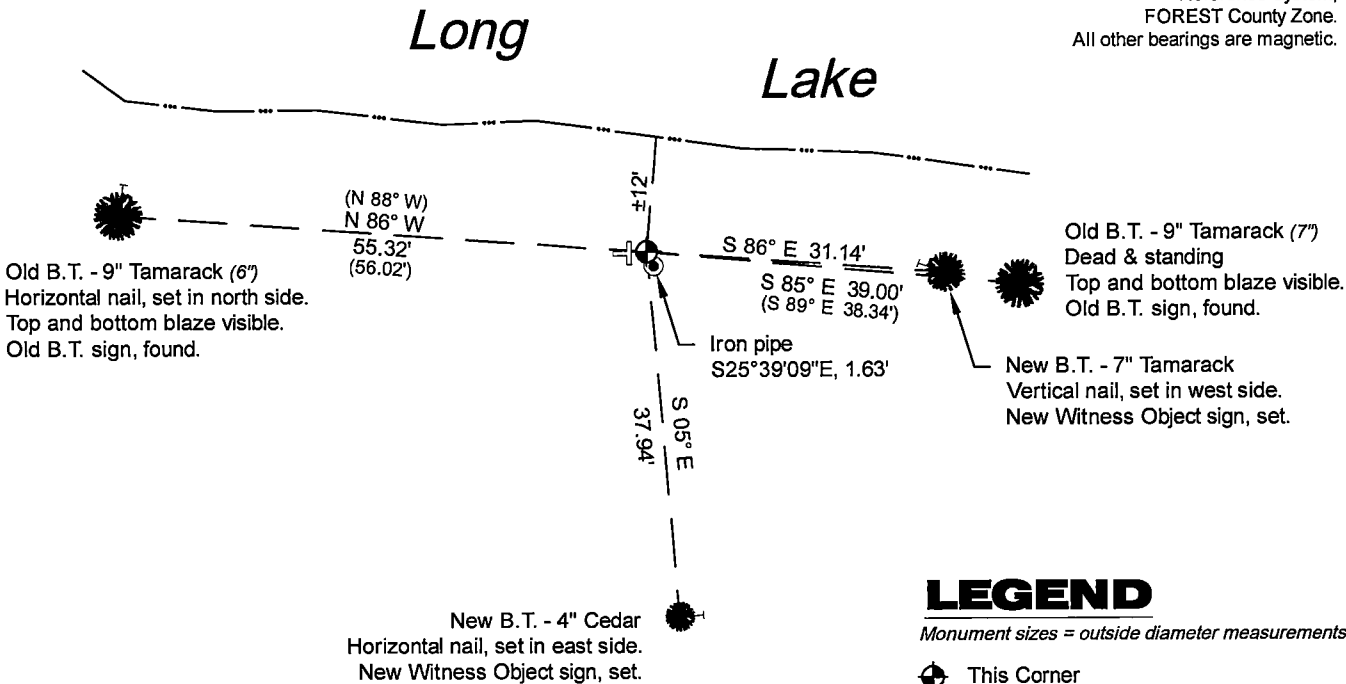
THENCE:

- 1979 - Surveyor 802 - Jean F. Resvick - reestablished this corner, and set a "2" diameter aluminum pipe, 5 feet long (pg. 1) or 10 feet long (pg. 3) with aluminum cap" per Florence Co. record Map #C1208.
- May 18, 1988 - Surveyor 00973 - Wayne G. Dobbratz - indicates this position as "existing monumentation established by U.S.F.S." on Florence Co. record Map #M0319.
- 1988 - Surveyor 1107 - William B. Cochrane - indicates this position as "2 1/2" diameter galvanized iron pipe monument 60 inches long with brass cap" on Forest Co. record Map #391425-19890412.

April 22, 2025 - In performing the 2024 - Forest County - "PLSS Corner Remonumentation and GPS Services" project, I found a 2.25" diameter aluminum pipe monument with a 3.25" diameter aluminum cap stamped to identify the corner. The monument is in a tamarack marsh / floating bog area ±12' from the shore of Long Lake, and is ±18" below the water surface. I also found 1 of Resvick's bearing trees alive and in good condition and 1 dead and standing.  
I established 3 new reference monuments as shown below.

A-E 7.08(3)(c)(d) Plan view of corner with references to at least 4 witness monuments.

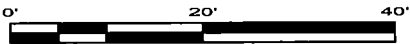
Bearings listed to the nearest second  
are referenced to the:  
Wisconsin County Coordinate  
Reference System,  
FOREST County Zone.  
All other bearings are magnetic.



LEGEND

Monument sizes = outside diameter measurements.

- ⊕ This Corner
- └ Vinyl T-post, set at west edge of monument
- ⊙ 1.6" diameter x 60" long iron pipe, set
- ⊢ Galvanized nail, set or nail found as shown



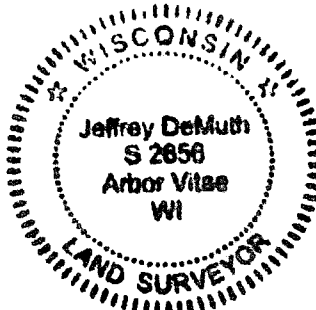
A-E 7.08(3)(e) 1858 Surveyor set a post, 1979 Surveyor set a 2" diameter aluminum pipe with an aluminum cap, 1988 Surveyors found a U.S.F.S. monument and a 2 1/2" diameter galvanized iron pipe monument 60 inches long with a brass cap. In 2024, I found a 2.25" diameter aluminum pipe monument with a 3.25" diameter aluminum cap stamped to identify the corner.  
A-E 7.08(3)(f) I accept this monument in good faith as a FOUND PERPETUATED LOCATION of the corner.  
A-E 7.08(3)(g)(h) This corner was not determined through lost-corner-proportionate methods.

A-E 7.08(3)(i) I, Jeffrey L. DeMuth, Professional Land Surveyor No. S-2656, hereby certify that the corner location on this record was determined by me or under my direction and control, and that this U.S. Public Land Survey Monument Record is correct and complete to the best of my knowledge, and belief.

SIGNATURE

April 23, 2025

DATE



43914251200

43914251200

U25