

CERTIFIED LAND CORNER RESTORATION

State of Wisconsin }
County of Forest } ss.

I Jean F. Resvick, do hereby certify that on the 10 day of October, 1975, I found evidence of the Northeast Section corner of Section 35 Township 39 North Range 14 East, Fourth Principal Meridian, as described hereon; and that from this evidence I established a new monument and accessories as described hereon to perpetuate the original location of this corner:

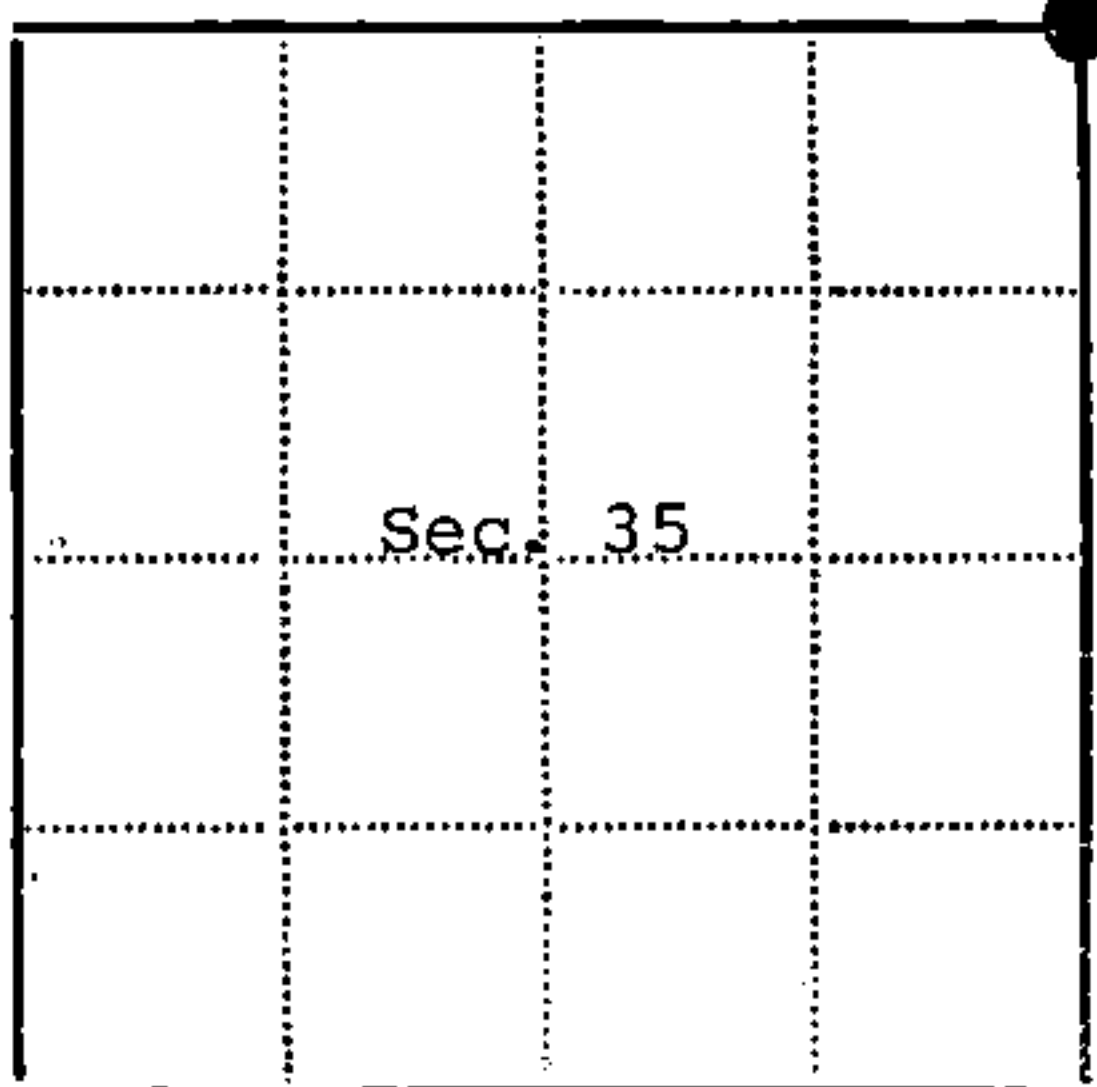
Description of original monument and accessories and subsequent restorations:

Surveyed in 1865 by William E. Daugherty
80.0 chains North between Sections 35 and 36
Set Post
Sugar 18, S62°W, 21 lks
Hemlock 10, N58E, 10 lks

Description of corner evidence found:

Old State Highway 139 runs North and South, old established fence runs East.
The center line of road and fence east has been accepted locally as the section corner.
No evidence of the original bearing trees were found.
The road was excavated with a back hoe and no evidence of the corner or bearing trees were found.
I then established this corner using the center line of old Highway 139 and fence line east as the best available evidence which was found to be in agreement with the natural calls and distance North and South with the center line of road controlling departures.
Description of monument and accessories I established to perpetuate the location of this corner:

At the corner position established above, I set a 2 inch inside diameter galvanized iron pipe, 3 feet long, filled with concrete, 0.7 feet below the surface of the blacktop road, with a brass cap stamped: T39N, R14E, S26, S25, S35, S36, 1975, S-802.
Referenced to the following blazed and scribed new bearing trees.
Double Elm 10, N22E, 57.20 feet
Aspen 8, S49E, 62.54 feet
Elm 12, S82W, 35.69 feet
Cherry 10, N49W, 47.95 feet
One quarter corner between sections 25 and 26 bears N0°27'53"W, 2664.05 ft. distance
One quarter corner between sections 35 and 36 bears S0°18'16"W, 2678.88 ft. distance



● - Corner monument restored
□ -

43914260000

Resident witnesses.....

Dated at Rhineland Wisconsin, this 30 day of April, 1976.

Signature Jean F. Resvick Title Land Surveyor
(County Surveyor, Registered Land Surveyor, or other duly authorized official)

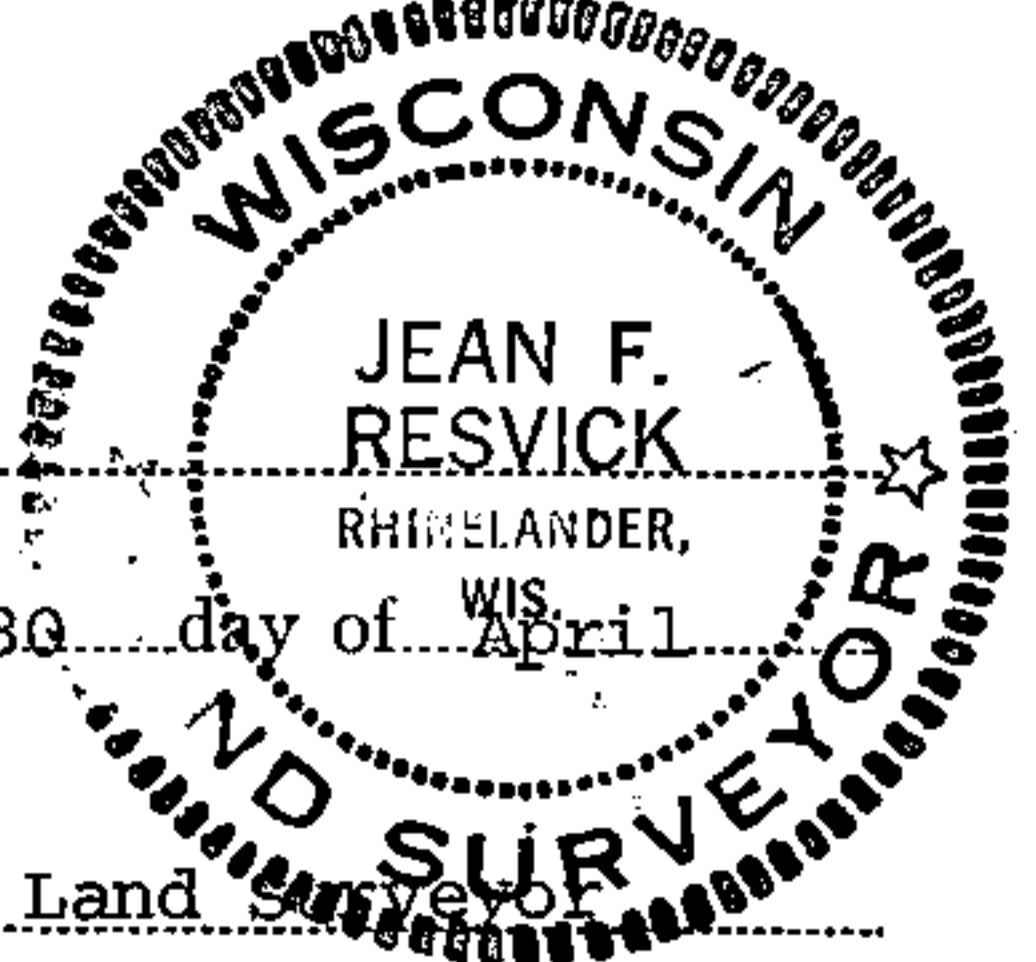
Surveyors Registration No. S-802 DOCUMENT NUMBER 109609

Office of Register of Deeds County of Forest

I hereby certify that the within instrument was filed in this office for record on the 2nd day of July, 1976, and was filed in Book No. _____ Page No. _____ of County Records.

Signature Eugene Stutzman Title Register of Deeds

Township 39 North, Range 14 East, Section 35, Index No. V-21, Page No. _____



V21

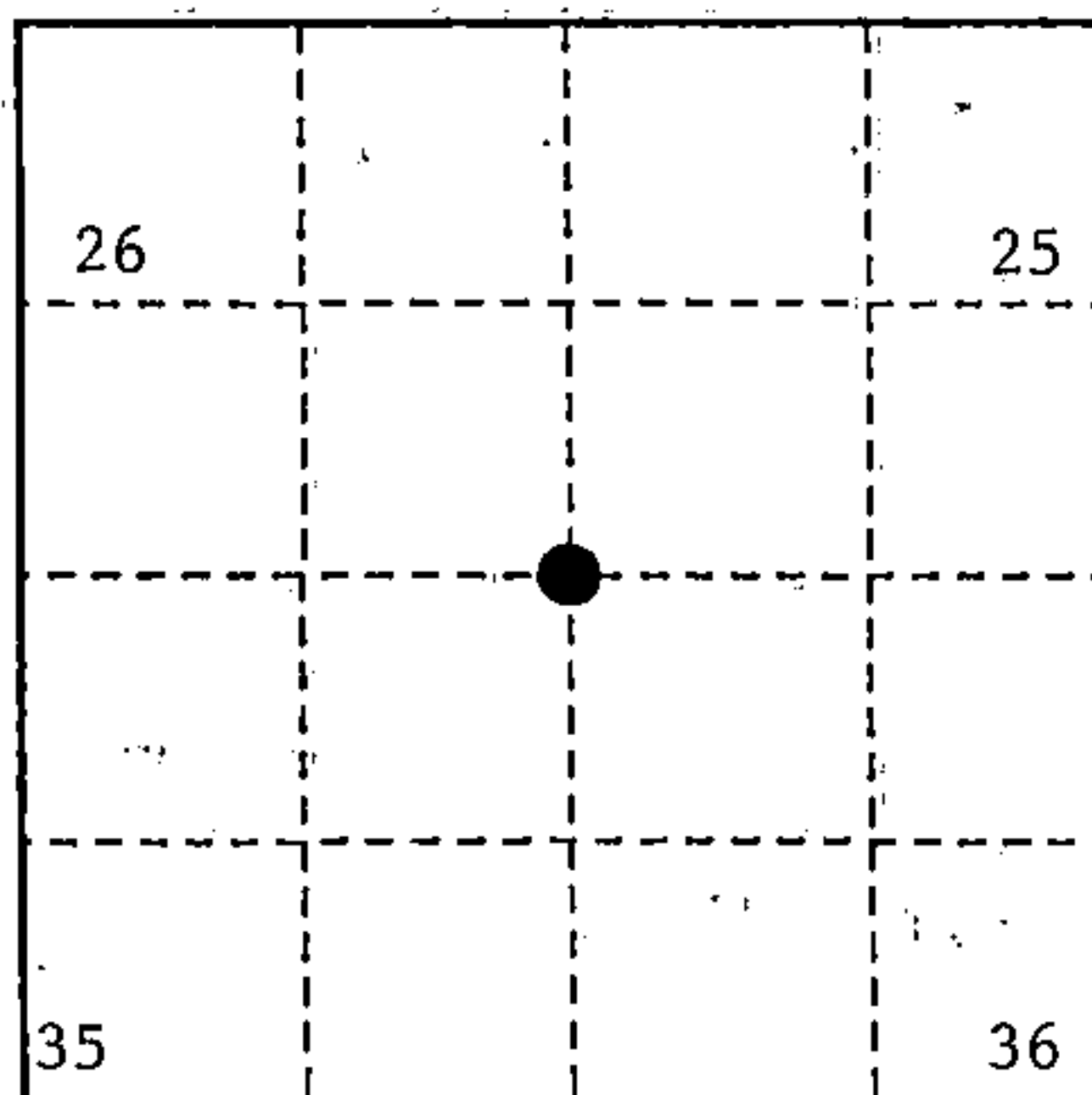
U. S. PUBLIC LAND SURVEY MONUMENT RECORD

INSTRUCTIONS:

This record shall show the location of the corner and shall include all of the following nine elements (a through i).

- (a) Identify the corner by reference to the U.S. public land survey system.
 O = Corner monument restored.

Section Corner to Sections 25, 26, 35, 36
 T39N, R14E, Forest County, Wisconsin



- (b) Describe any record evidence, monument evidence, occupational evidence, testimonial evidence or any other material evidence you considered, and whether the monument was found or placed.

Original Government Survey in 1865 by William E. Daugherty and Alex McDill.

In 1975, Jean Resvick, a Land Surveyor with the U.S. Forest Service, accepted the centerline of a North/South road and a fence line running to the East as the best available evidence for restoring the corner position. He set a 2" diameter galvanized iron pipe with a brass cap stamped as follows: T39N, R14E, S26, S25, S35, S36, 1975, S-802, from which the following bear:

| | | | |
|--------|-----|--------|------------|
| Elm | 10" | N 22°E | 57.20 feet |
| Aspen | 12" | S 49°E | 62.54 feet |
| Elm | 12" | S 82°W | 35.69 feet |
| Cherry | 12" | N 49°W | 47.95 feet |

Monument is 0.7 feet below the road bed surface.

In 1985, William B. Cochrane RLS with the U.S. Forest Service, found the above described monument and the following corner references:

Aspen, 12", S 49°E, 62.54 feet Cherry 10", N 49°W, 47.95 feet

In 1985, blazed and scribed new bearing tree:

Maple 5" S 70°W 51.45 feet

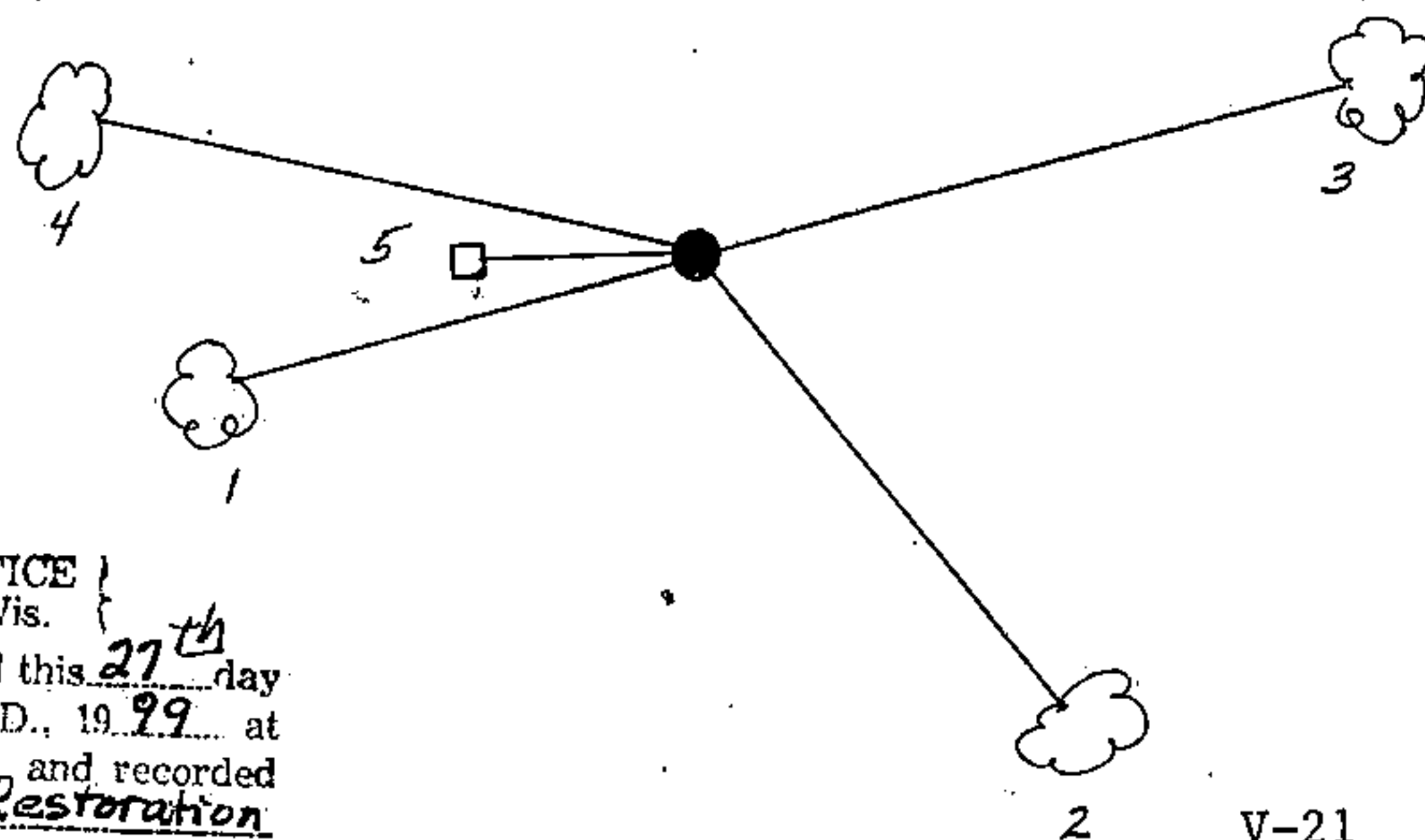
On 9/25/99, Gary L. Pisoni, RLS found above monument and assessories as described below.

See previous Land Corner Certificate dated April 12, 1989, Document Number 137190.

- (c) In the plan view drawing below, provide reference ties to at least 4 witness monuments, or, if the location is within a municipality, to at least 2 witness monuments. (witness monuments shall be made of concrete, natural stone, iron or other equally durable material.)

- (d) Show a plan view drawing depicting the relevant monuments and reference ties which is sufficient in detail to enable accurate relocation of the corner monument if the corner monument is disturbed. Indicate north.

1. Maple, 7", S 70°W, 51.45 feet
2. Aspen, 13", S 49°E, 62.54 feet
3. Popple, 6", N 68°E, 30.95 feet (NBT)
4. Maple, 9", N 72°W, 38.40 feet (NBT)
5. Steel sign post, West, 19.60 feet



REGISTER'S OFFICE
 Forest County, Wis.
 Received for record this 27th day
 of October A.D., 1999 at
10:05 o'clock A.M. and recorded
 in Vol. Corner Restoration
 page V-21

Kay Swanson, Deputy
 Register of Deeds

43914260000

V-21

V-21

(e) Describe any material discrepancy between the location of the corner as restored or reestablished and the location of that corner as previously restored or reestablished by distance and direction. Show the discrepancy on the plan view drawing under (d). above. Show the distances between the corner as previously restored or reestablished and (1) the corner as restored or reestablished, and (2) to at least 2 of the witness monuments shown on the drawing in (d), above.

None

(f) Was the corner restored through acceptance of (1) an obliterated evidence location, or, (2) a found perpetuated location ?

Restored from accepted evidence.

(g & h) Was the corner reestablished through lost corner proportionate methods? If so, show the method, including the directions and distances to other public land survey corners used as evidence or used for proportioning in determining the corner location?

(1) I, Gary L. Pisoni

(type or print name) certify that the corner location shown on this record was determined by me or under my direction and control and that this U.S. Public Land Survey Monument Record is correct and complete to the best of my knowledge and belief.

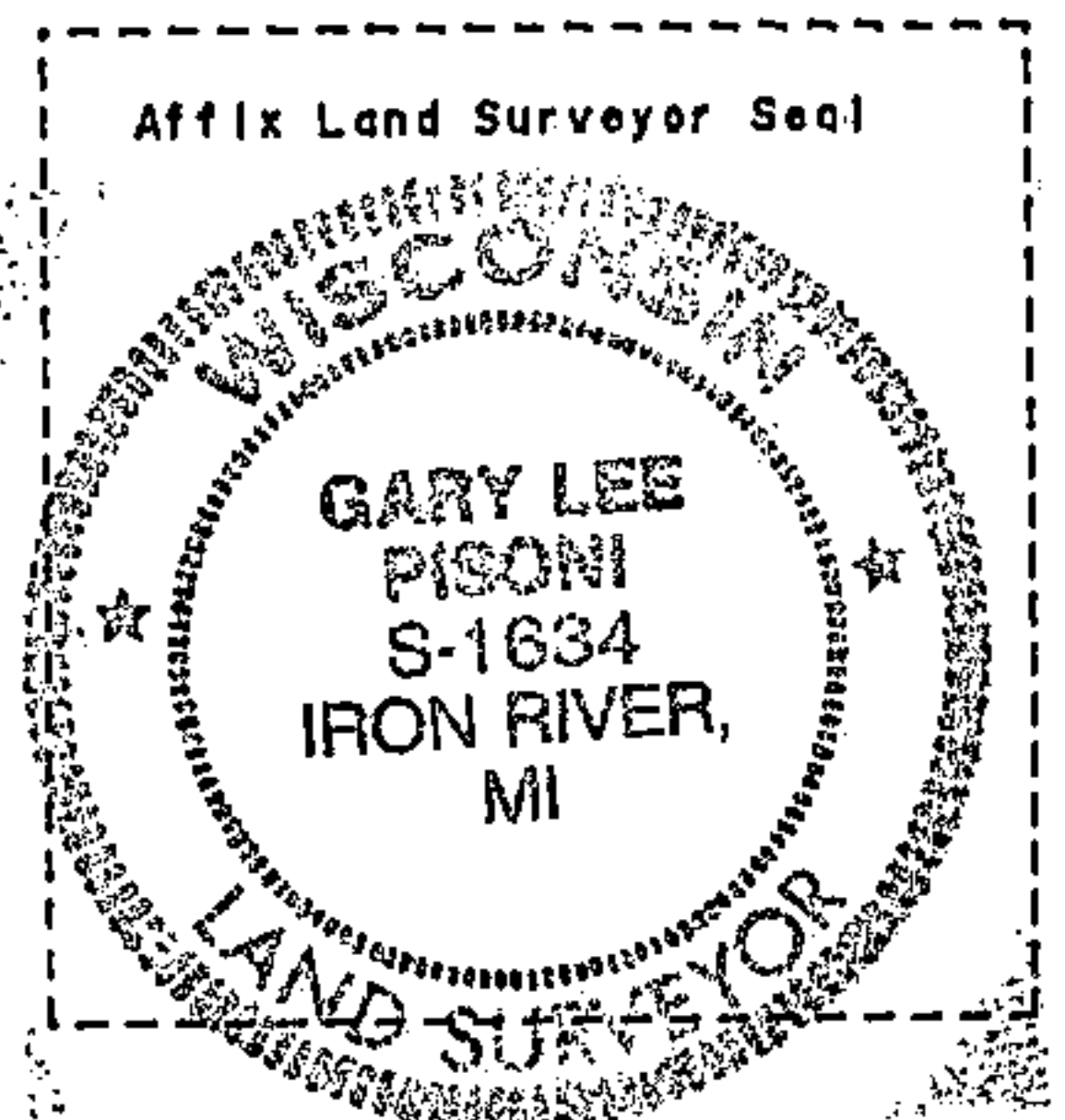
Signature

CERTIFICATE READY FOR FILING:

10-1-99

Date

District Ranger



Stock No. 26273

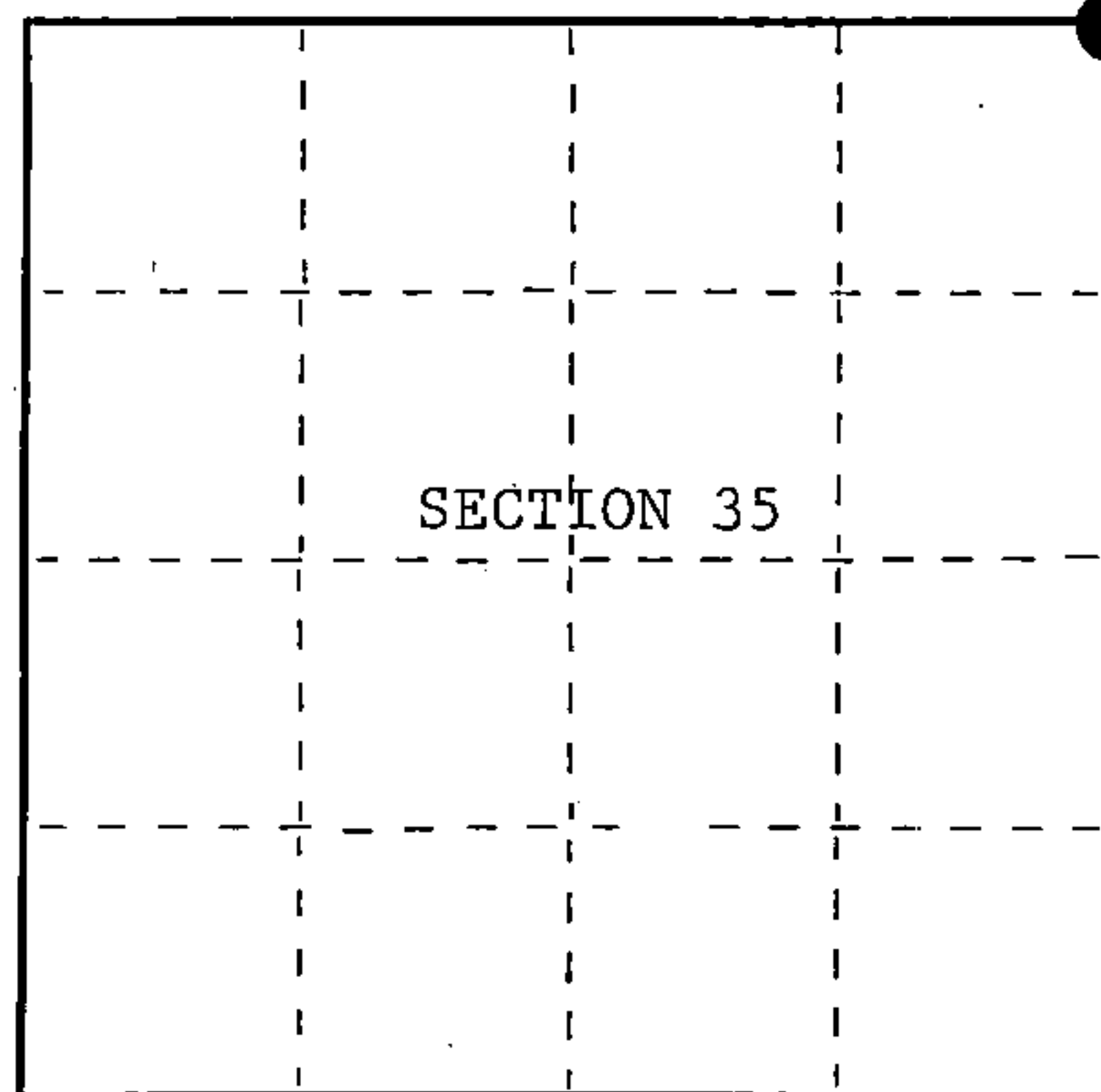
U.S. PUBLIC LAND SURVEY MONUMENT RECORD

Index No. V-21

State of Wisconsin }
County of Forest } ss.

I William B. Cochran, do hereby
certify that on the 14th day
of August, 1985, I found
evidence of the Northeast Section
corner of Section 35
Township 39, North, Range
14 East, Fourth Principal Meridian,
as described hereon; and that from this evidence
I established a new monument and accessories
as described hereon to perpetuate the original
location of this corner.

Resident witnesses:

State Plane Co-ordinates
N- 242,621.7260
E-2,332,443.8020

○ = Corner monument restored.

History of original corner establishment:

Original Government Survey in 1865 by William E. Daugherty and Alex McDill.

Corner position was restored on October 10th, 1975 by Jean Resvick, a Registered Land
Surveyor with the U.S. Forest Service. See Certified Land Corner Restoration Certificate
filed in the Registrar of Deeds Office in the Forest County Courthouse.

Description of corner evidence found:

Found monument as described and in place, from which the following bear;

| | | |
|------------------|-------|------------|
| Double Elm(Dead) | N22°E | 57.20 feet |
| Aspen 12" | S49°E | 62.54 feet |
| Elm(Dead) | S82°W | 35.69 feet |
| Cherry 10" | N49°W | 47.95 feet |

Description of monument and accessories I established to perpetuate the original location of this corner.

Blazed and scribed a new bearing tree;

| | | | |
|-------|----|-------|------------|
| Maple | 5" | S70°W | 51.45 feet |
|-------|----|-------|------------|

No Bt available in the NE Quadrant

Dated at Hiles, Wis., this 15th day of February, 1989

Signature William B. Cochran, Title Land Surveyor, Registration No. S-1107
(County Surveyor, Registered Land Surveyor, or other duly authorized official)

Office of Register of Deeds, County of Forest, I hereby certify that the within
instrument was filed in this office for record on the 12th day of April, 1989
at 9:10 o'clock A. M.

Paul Aschenbrenner
(Register of Deeds)

By Deputy

(e) Describe any material discrepancy between the location of the corner as restored or reestablished and the location of that corner as previously restored or reestablished by distance and direction. Show the discrepancy on the plan view drawing under (d), above. Show the distances between the corner as previously restored or reestablished and (1) the corner as restored or reestablished, and (2) to at least 2 of the witness monuments shown on the drawing in (d), above.

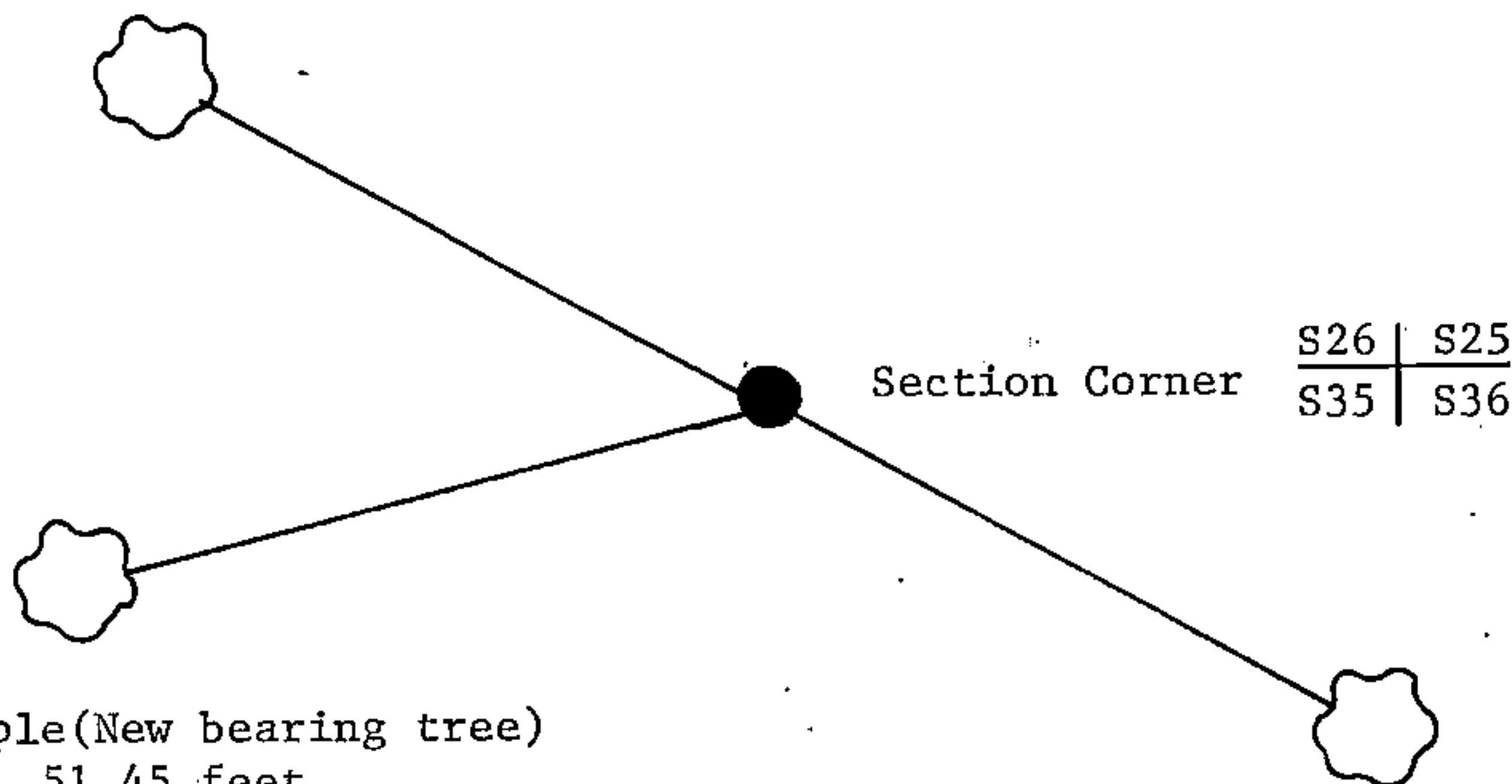
See drawing below.

(f) Was the corner restored through acceptance of (1) an obliterated evidence location, or, (2) a found perpetuated location?

Restored through acceptance of a found perpetuated location.

(g&h) Was the corner reestablished through lost corner proportionate methods? If so, show the method, including the directions and distances to other public land survey corners used as evidence or used for proportioning in determining the corner location?

10" Cherry
N49°W, 47.95 feet



5" Maple (New bearing tree)
S70°W, 51.45 feet

12" Aspen
S49°E, 62.54 feet

Affix Land Surveyor Seal



(i) I, William B. Cochrane
(type or print name) certify that the corner location shown on this record was determined by me or under my direction and control and that this U.S. Public Land Survey Monument Record is correct and complete to the best of my knowledge and belief.

William B. Cochrane February 15, 1989
Signature Date

Survey requested by; _____
District Ranger Date