

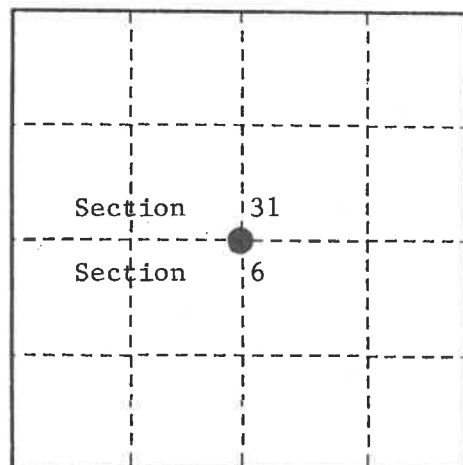
## U. S. PUBLIC LAND SURVEY MONUMENT RECORD

## INSTRUCTIONS:

This record shall show the location of the corner and shall include all of the following nine elements (a through i).

- (a) Identify the corner by reference to the U.S. public land survey system.  
 O = Corner monument restored.

Quarter Corner common to Section 6, T38N, R14E,  
 and Section 31, T39N, R14E, Forest County,  
 Wisconsin



- (b) Describe any record evidence, monument evidence, occupational evidence, testimonial evidence or any other material evidence you considered, and whether the monument was found or placed.

Original Government Survey in 1865 by William E. Daugherty and Alex McDill.

In 1975, William B. Cochrane, Land Surveyor with the Forest Service, restored the corner position and set a 2 inch diameter galvanized iron pipe, 3 feet long, 2½ feet in the ground, with a brass cap stamped; T39N, R14E, T38N, 1/4, S31, S6, 1975, S-1107. See previously recorded Land Corner Certificate Document #108561.

In 1985, Cochrane found the following bearing trees;

Maple	7"	N17°E	2.71 feet
Maple	7"	N52°W	10.29 feet
Yellow Birch	19"	N51°E	27.72 feet
Steel Sign Post		Southeast	0.50 feet

Blazed and scribed new bearing trees;

Maple	10"	S66°E	19.69 feet
Hemlock	19"	S18°W	23.95 feet

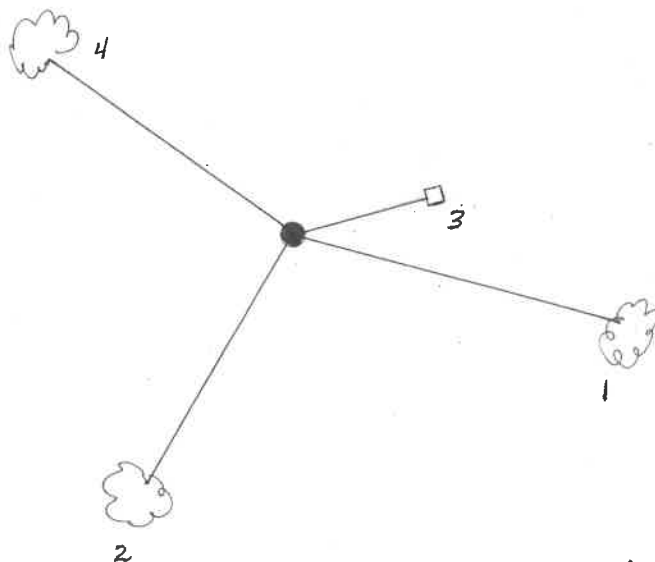
On 9-28-99, Gary L. Pisoni, RLS, found the monument as described above, found the bearing trees as described below, and made a new bearing tree as described below.

See previously recorded Land Corner Certificate, Document # 132401.

- (c) In the plan view drawing below, provide reference ties to at least 4 witness monuments, or, if the location is within a municipality, to at least 2 witness monuments. (witness monuments shall be made of concrete, natural stone, iron or other equally durable material.)

- (d) Show a plan view drawing depicting the relevant monuments and reference ties which is sufficient in detail to enable accurate relocation of the corner monument if the corner monument is disturbed. Indicate north.

1. Maple, 15", S66°E, 19.69 feet
2. Hemlock, 24", S18°W, 23.95 feet
3. Steel Sign Post, N60°E, 0.89 feet
4. Maple, 10", N41°W, 74.87 feet (NBT)



REGISTER'S OFFICE  
 Forest County, Wis.  
 Received for record this 27<sup>th</sup> day  
 of October, A.D., 1999 at  
10:05 o'clock A.M. and recorded  
 in Vol. Corner Restoration  
 page Z-3

Kay Swanson, Deputy  
 Register of Deeds

43914310020

Z-3

N  
W

(e) Describe any material discrepancy between the location of the corner as restored or reestablished and the location of that corner as previously restored or reestablished by distance and direction. Show the discrepancy on the plan view drawing under (d), above. Show the distances between the corner as previously restored or reestablished and (1) the corner as restored or reestablished, and (2) to at least 2 of the witness monuments shown on the drawing in (d), above.

None

(f) Was the corner restored through acceptance of (1) an obliterated evidence location, or, (2) a found perpetuated location?

Found perpetuated location.

(g & h) Was the corner reestablished through lost corner proportionate methods? If so, show the method, including the directions and distances to other public land survey corners used as evidence or used for proportioning in determining the corner location?

(1) I, Gary L. Pisoni

(type or print name) certify that the corner location shown on this record was determined by me or under my direction and control and that this U.S. Public Land Survey Monument Record is correct and complete to the best of my knowledge and belief.

Gary L. Pisoni

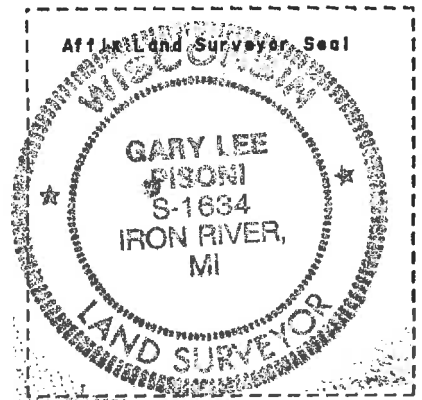
10-2-99

Signature

Date

CERTIFICATE READY FOR FILING:

B. J. [Signature]  
District Ranger



CERTIFIED LAND CORNER RESTORATION

State of Wisconsin

County of Forest

ss.

I William B. Cochrane, do hereby certify that on the 4th day of April, 19 75, I found evidence of the South Quarter corner of Section 31 Township 39 North Range 14 East, Fourth Principal Meridian, as described hereon; and that from this evidence I established a new monument and accessories as described hereon to perpetuate the original location of this corner:

Description of original monument and accessories and subsequent restorations:

Surveyed in June 1858 by Alfred Millard  
West between Sections 6 and 31. 40.00 chains set quarter section post.  
Hemlock, 10", N44°E, 36 links  
Fir, 10", S46°W, 8 links  
1.50 chains East enter Swamp bears NE and SW.

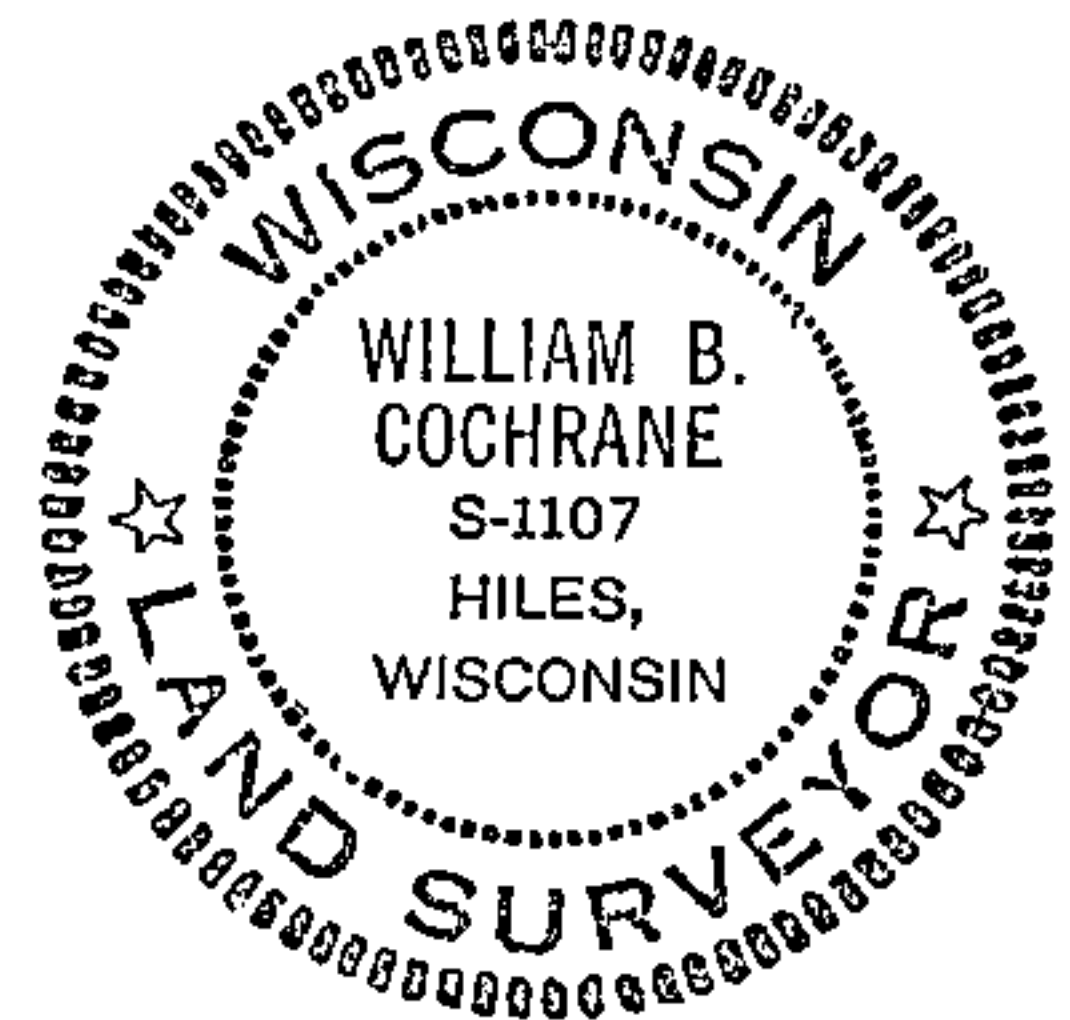
Description of corner evidence found:

4x4 scribed cedar post in a mound of rocks  
Hemlock stump roots, bear N44°E, 36 links  
No evidence found of the Fir bearing tree  
A Yellow Birch, 18", bears N51°E, 42 links, scribed by an unknown surveyor  
1.50 chains East, enter swamp bears NE and SW

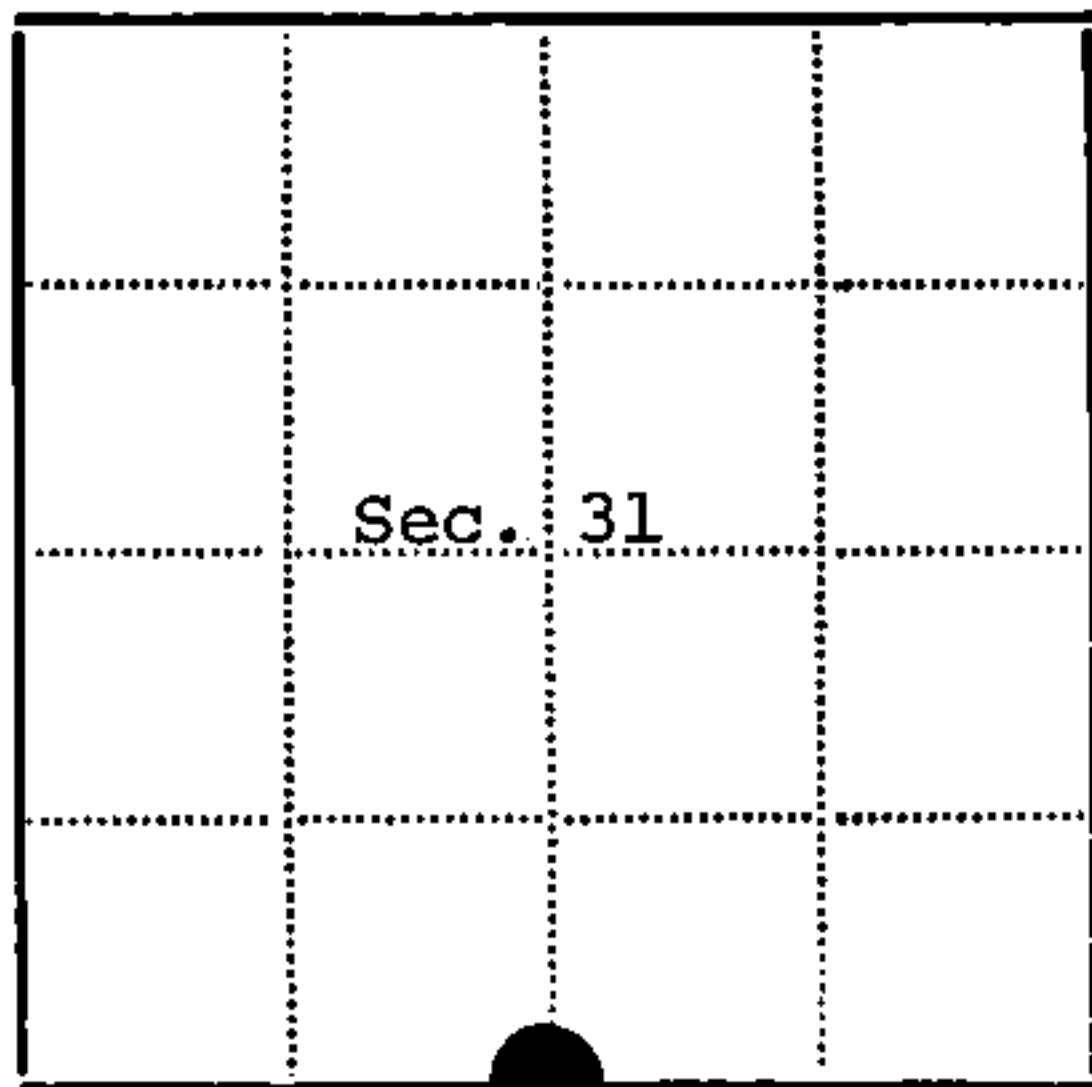
Description of monument and accessories I established to perpetuate the location of this corner:

I replaced the post found with a 2 inch inside diameter galvanized pipe, 3 feet long, filled with concrete with a brass cap stamped:

T39N R14E, 1/4, S31, S6, T38N, 1975, S-1107  
From which the following bear:  
Maple, 6", N17°E, 2.71 feet  
Maple, 6", N52°W, 10.29 feet  
Yellow Birch, 18", N51°E, 42 links  
Set a steel sign post SE of the monument 0.50 feet



43914310020



● - Corner monument restored

□ -

Resident witnesses

Dated at Three Lakes Wisconsin, this 24th day of December 19 75.

Signature William B. Cochrane Title Survey Technician  
(County Surveyor, Registered Land Surveyor, or other duly authorized official)

Surveyors Registration No. S-1107

DOCUMENT NUMBER --

108561

Office of Register of Deeds County of Forest

I hereby certify that the within instrument was filed in this office for record on the 11th day of January 19 76, and was filed in Book No. Page No. of County Records.

Signature Eugene Statynj Title Register of Deeds

Township 39 North Range 14 East Section 31 Index No. 2-3 Page No.

23

U.S. PUBLIC LAND SURVEY MONUMENT RECORD

Index No. A-3

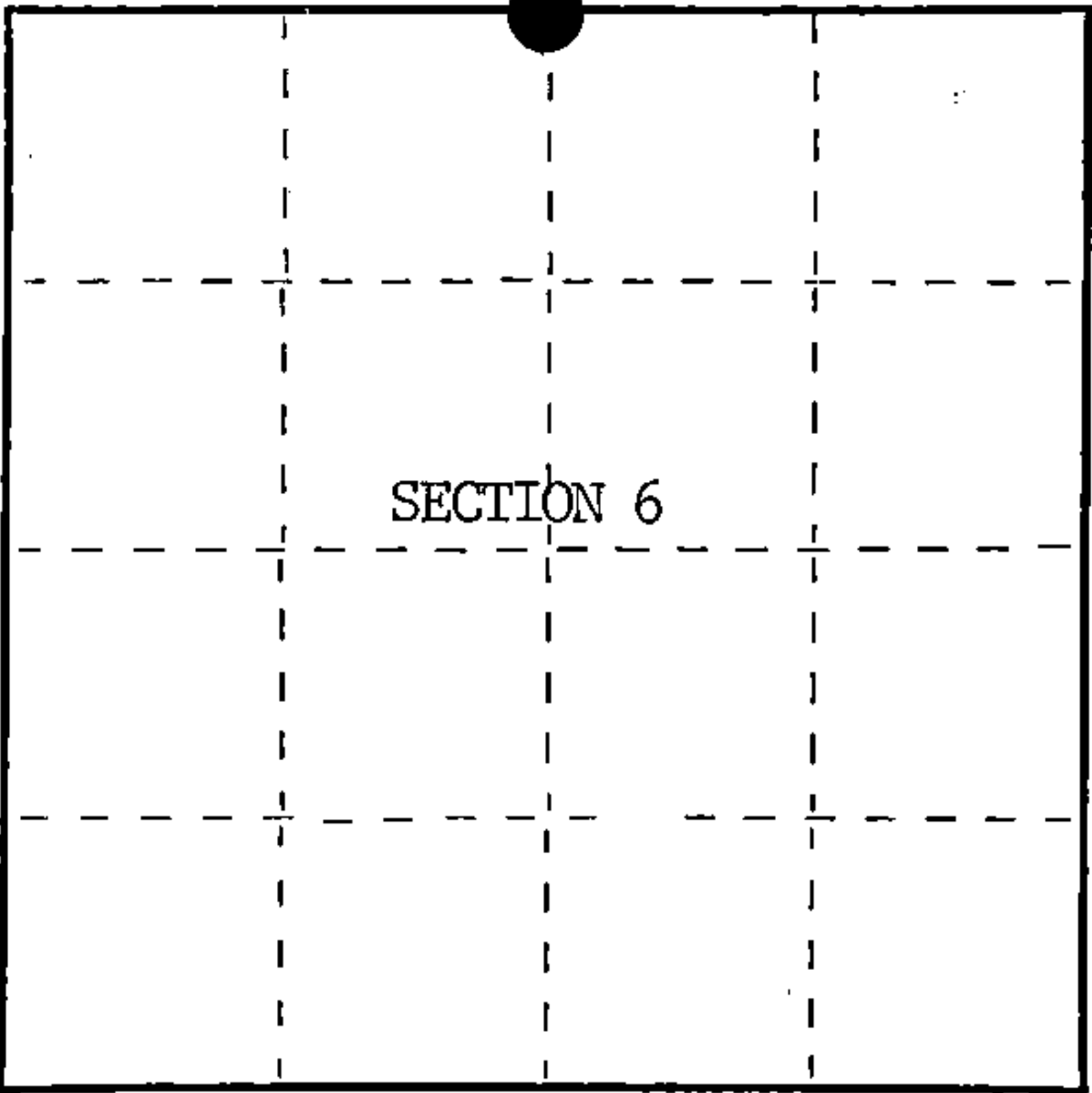
State of Wisconsin }  
County of Forest } ss.

I, William B. Cochran, do hereby  
certify that on the 29th day  
of July, 1985, I found  
evidence of the North Quarter  
corner of Section 6  
Township 38, North, Range  
14 East, Fourth Principal Meridian,  
as described hereon; and that from this evidence  
I established a new monument and accessories  
as described hereon to perpetuate the original  
location of this corner.

Resident witnesses:

David Brownell

State Plane Co-ordinates  
N- 236,851.3620  
E-2,308,931.2060



○ = Corner monument restored.

History of original corner establishment:

Original Government Survey in 1858 by Alfred Millard.

Corner restoration on April 4th, 1975, by William B. Cochran, a  
Registered Land Surveyor with the U.S. Forest Service.

See Certified Land Corner Restoration Certificate #108561, filed in the  
Registrar of Deeds Office, in the Forest County Courthouse.

Description of corner evidence found:

Found monument as described and in place, from which the following bear;

Maple	7"	N17°E	2.71 feet
Maple	7"	N52°W	10.29 feet
Y. Birch	19"	N51°E	27.72 feet
Steel Sign Post		SE	0.50 feet

All of the above Bearing Trees were cut down for the Aerial Photo Project.

Description of monument and accessories I established to perpetuate the original location of this corner.

Blazed and scribed the following new bearing trees;

Maple	10"	S66°E	19.69 feet
Hemlock	19"	S18°W	23.95 feet

Re-set Steel Sign Post NW 3.00 feet

Dated at Hiles, Wis., this 22nd day of January, 1986

Signature William B. Cochran Title Land Surveyor Registration No. S-1107  
(County Surveyor, Registered Land Surveyor, or other duly authorized official)

Office of Register of Deeds, County of Forest, I hereby certify that the within  
instrument was filed in this office for record on the 11th day of March, 1987  
at 3:30 o'clock P. M.

Paul Aschenbrenner  
(Register of Deeds)

By \_\_\_\_\_ Deputy

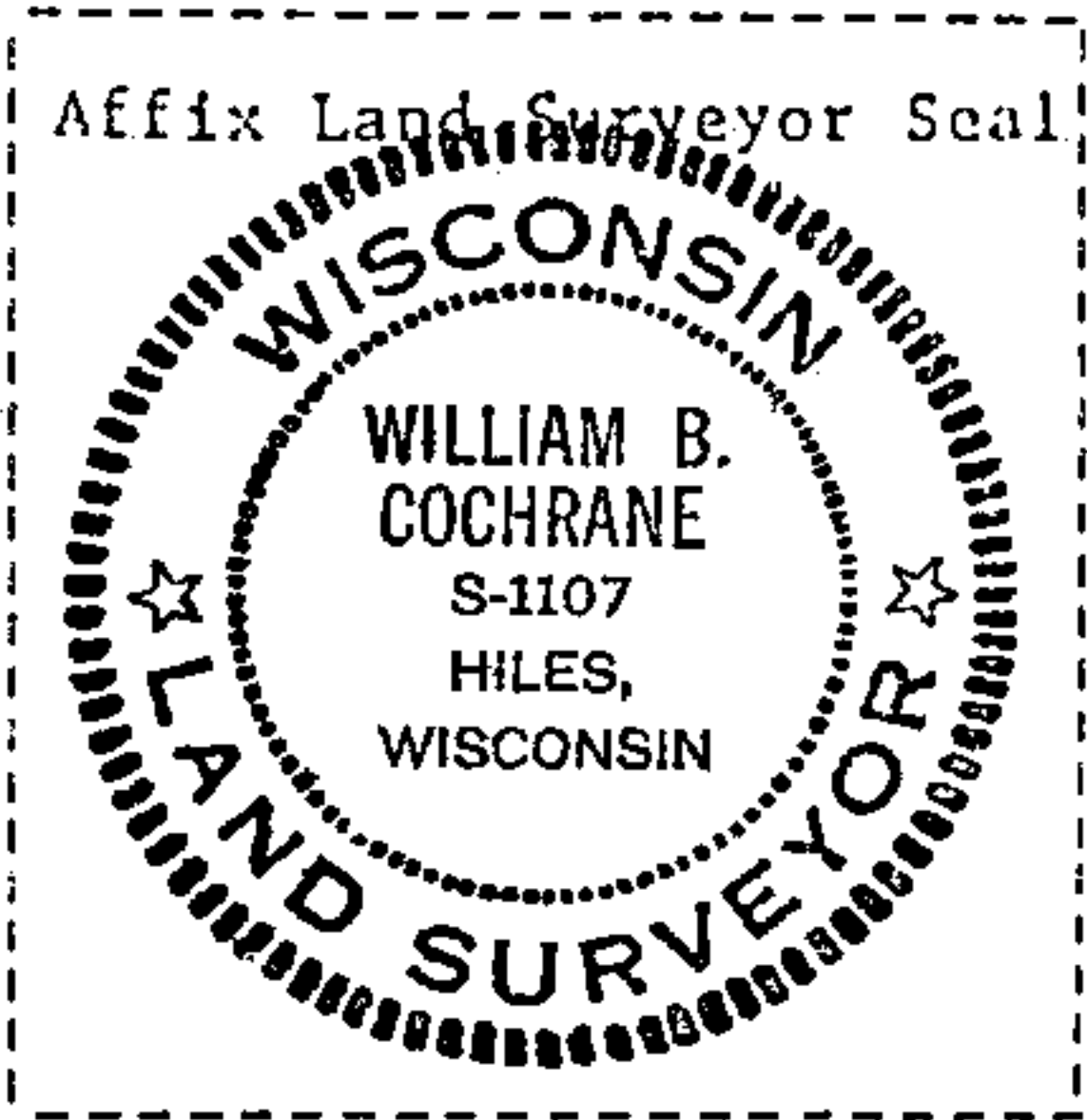
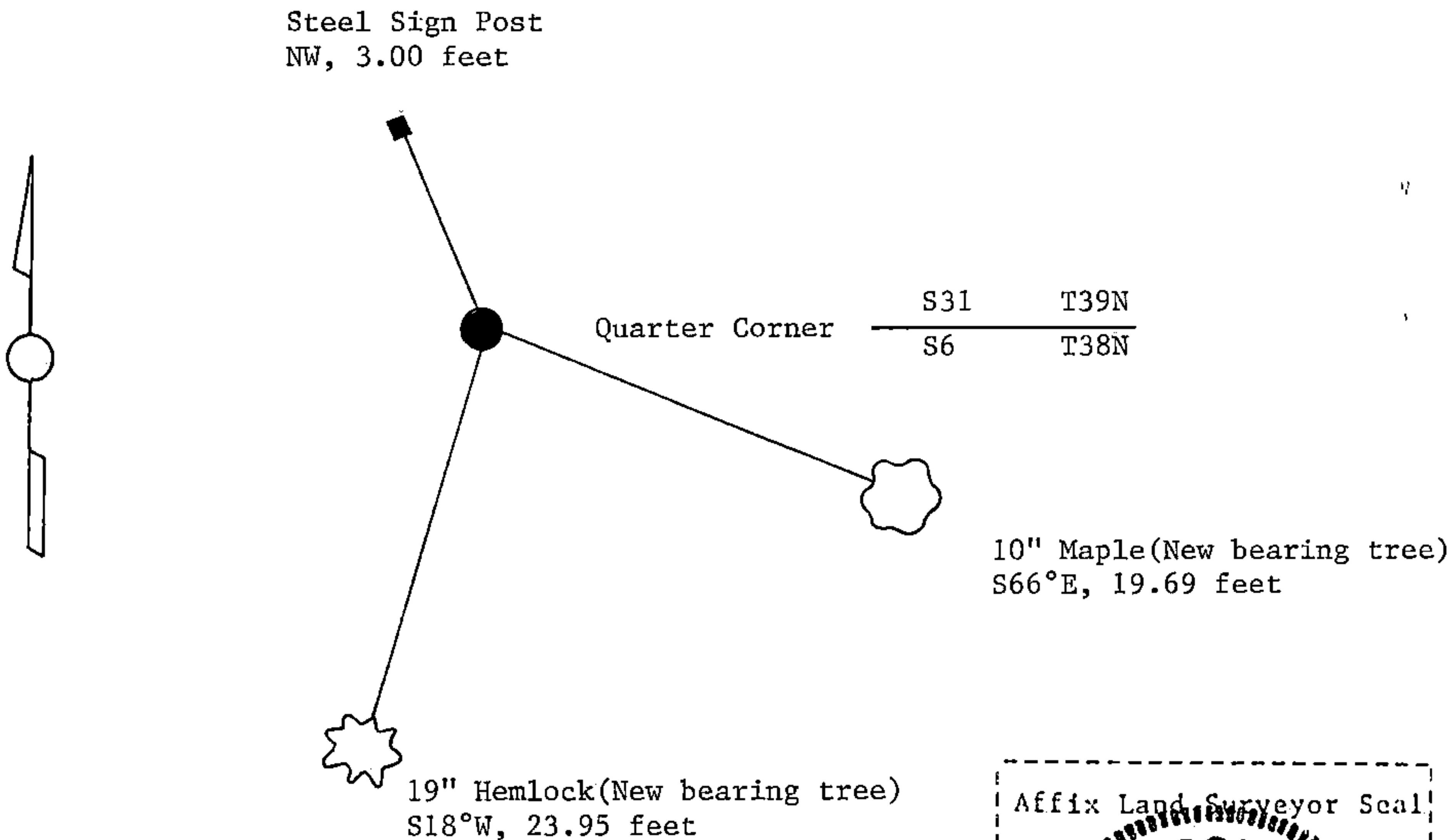
(e) Describe any material discrepancy between the location of the corner as restored or reestablished and the location of that corner as previously restored or reestablished by distance and direction. Show the discrepancy on the plan view drawing under (d), above. Show the distances between the corner as previously restored or reestablished and (1) the corner as restored or reestablished, and (2) to at least 2 of the witness monuments shown on the drawing in (d), above.

See drawing below.

(f) Was the corner restored through acceptance of (1) an obliterated evidence location, or, (2) a found perpetuated location?

Restored through acceptance of a found perpetuated location.

(g&h) Was the corner reestablished through lost corner proportionate methods? If so, show the method, including the directions and distances to other public land survey corners used as evidence or used for proportioning in determining the corner location?



(i) 1. William B. Cochrane  
(type or print name) certify that the corner location shown on this record was determined by me or under my direction and control and that this U.S. Public Land Survey Monument Record is correct and complete to the best of my knowledge and belief.

William B. Cochrane October 8, 1986  
Signature Date

Survey requested by: Edward Anger 3-9-87  
District Ranger Date

U.S. PUBLIC LAND SURVEY MONUMENT RECORD

Index No. Z-3

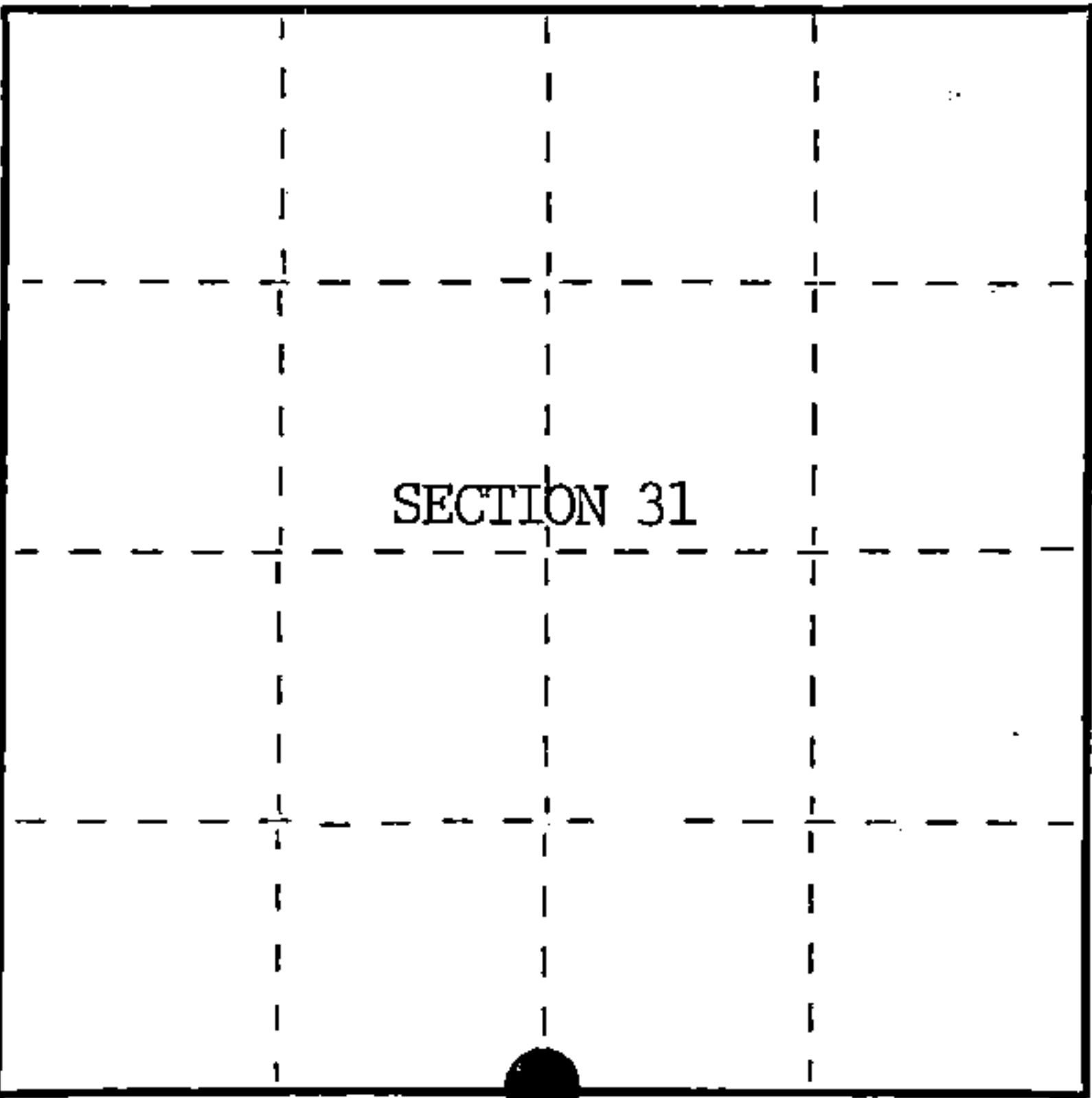
State of Wisconsin }  
County of Forest } ss.

I, William B. Cochrane, do hereby  
certify that on the 29th day  
of July, 1985, I found  
evidence of the South Quarter  
corner of Section 31  
Township 39, North, Range  
14 East, Fourth Principal Meridian,  
as described hereon; and that from this evidence  
I established a new monument and accessories  
as described hereon to perpetuate the original  
location of this corner.

Resident witnesses:

David Brownell

State Plane Co-ordinates  
N- 236,851.3620  
E-2,308,931.2060



○ = Corner monument restored.

History of original corner establishment:

Original Government Survey in 1858 by Alfred Millard.

Corner restoration on April 4th, 1975, by William B. Cochrane,  
a Registered Land Surveyor with the U.S. Forest Service.

See Certified Land Corner Restoration Certificate #108561, filed in the  
Registrar of Deeds Office, in the Forest County Courthouse.

Description of corner evidence found:

Found monument as described and in place, from which the following bear;

Maple	7"	N17°E	2.71 feet
Maple	7"	N52°W	10.29 feet
Y. Birch	19"	N51°E	27.72 feet
Steel Sign Post		SE	0.50 feet

All of the above Bearing Trees were cut down for the Aerial Photo Project.

Description of monument and accessories I established to perpetuate the original location of this corner.

Blazed and scribed the following new bearing trees;

Maple	10"	S66°E	19.69 feet
Hemlock	19"	S18°W	23.95 feet

Re-set Steel Sign Post NW 3.00 feet

Dated at Hiles, Wis., this 22nd day of January, 1986

Signature: William B. Cochrane Title: Land Surveyor Registration No. S-1107  
(County Surveyor, Registered Land Surveyor, or other duly authorized official)

Office of Register of Deeds, County of Forest, I hereby certify that the within  
instrument was filed in this office for record on the 11th day of March, 1987  
at 3:30 o'clock P. M.

Paul Aschenbrenner  
(Register of Deeds)

By Deputy



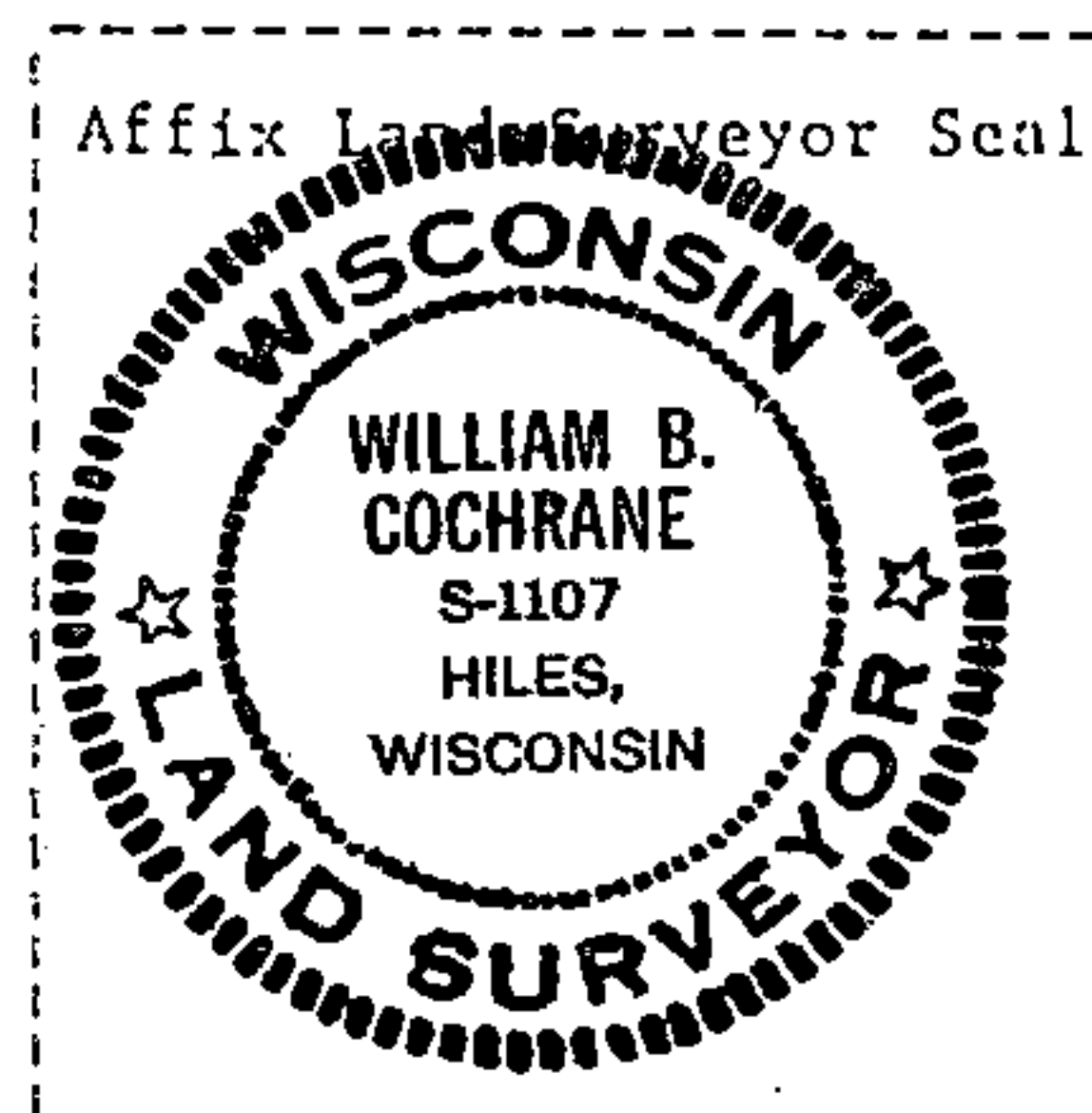
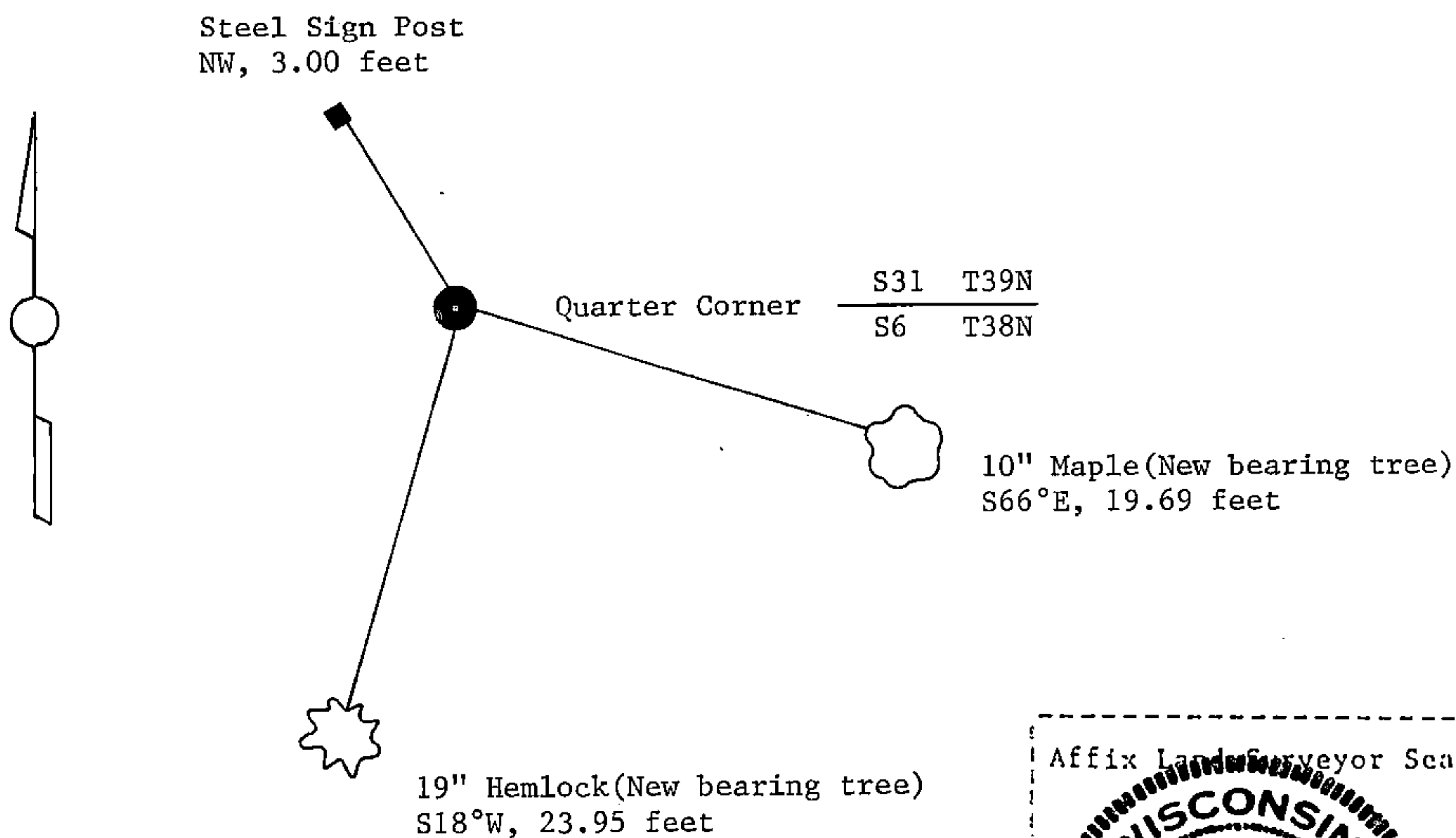
- (e) Describe any material discrepancy between the location of the corner as restored or reestablished and the location of that corner as previously restored or reestablished by distance and direction. Show the discrepancy on the plan view drawing under (d), above. Show the distances between the corner as previously restored or reestablished and (1) the corner as restored or reestablished, and (2) to at least 2 of the witness monuments shown on the drawing in (d), above.

See drawing below.

- (f) Was the corner restored through acceptance of (1) an obliterated evidence location, or, (2) a found perpetuated location?

Restored through acceptance of a found perpetuated location.

- (g&h) Was the corner reestablished through lost corner proportionate methods? If so, show the method, including the directions and distances to other public land survey corners used as evidence or used for proportioning in determining the corner location?



- (i) I, William B. Cochrane  
(type or print name) certify that the corner location shown  
on this record was determined by me or under my direction and  
control and that this U.S. Public Land Survey Monument Record is  
correct and complete to the best of my knowledge and belief.

William B. Cochrane      October 7, 1986  
Signature      Date

Survey requested by: Edward E. Eyr 3-9-87  
District Ranger Date