

## U.S. PUBLIC LAND SURVEY MONUMENT RECORD

Index No. Z-11State of Wisconsin }  
County of Forest } ss.

I William B. Cochran, do hereby  
certify that on the 9th day  
of September, 19 86, I found  
evidence of the South Quarter  
corner of Section 33  
Township 39, North, Range  
14 East, Fourth Principal Meridian,  
as described hereon; and that from this evidence  
I established a new monument and accessories  
as described hereon to perpetuate the original  
location of this corner.

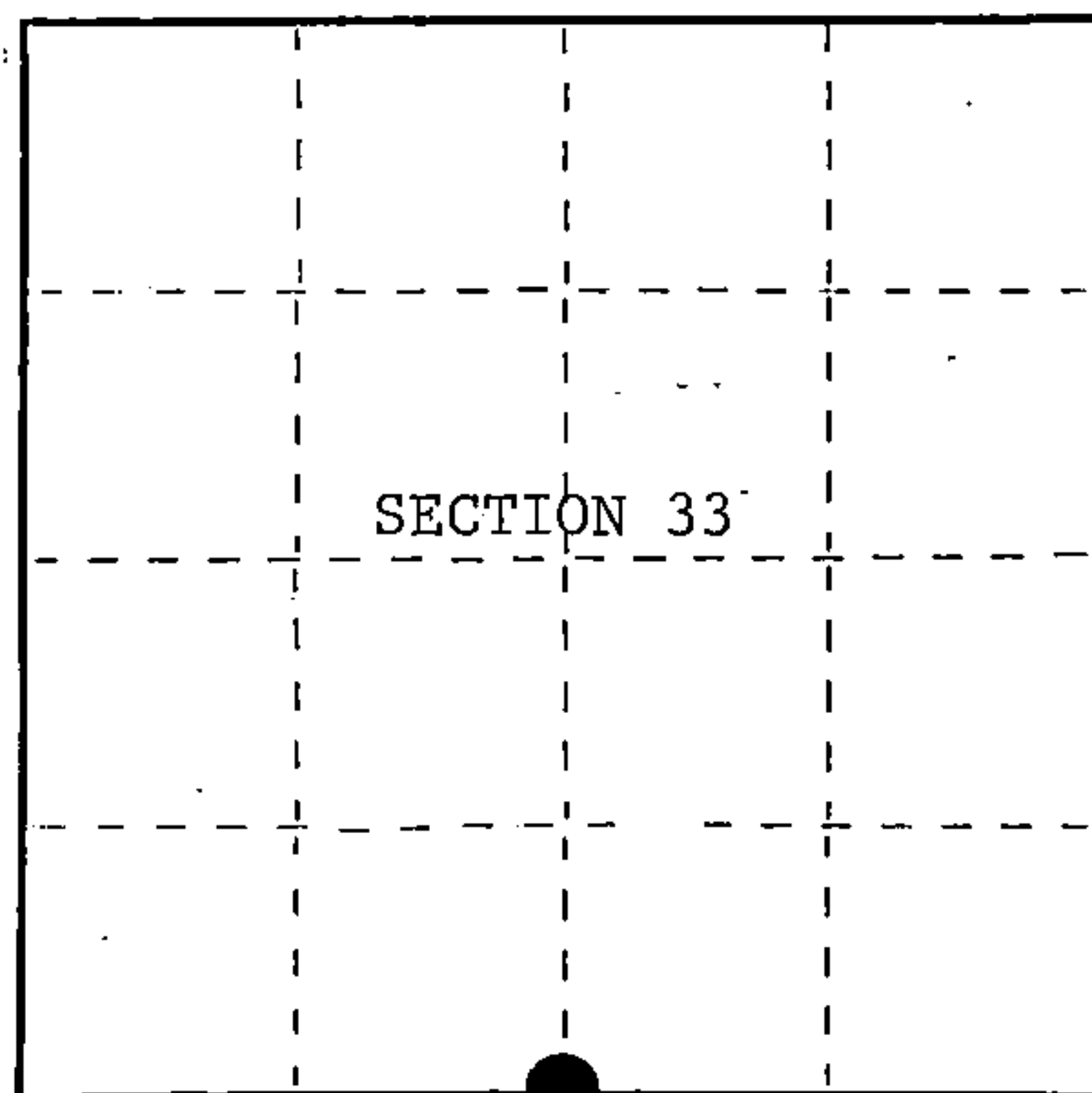
Resident witnesses:

David BrownellTony Tillman

State Plane Co-ordinates

N- 237,024.8852

E-2,319,401.2140



○ = Corner monument restored.

## History of original corner establishment:

Original Government Survey in 1858 by Artemas Curtis. West on the South side of  
Section 33, at 40 chains, set Quarter Section Post to Sections 33 and 4, from which  
the following bear;

Hemlock	16"	N20°E	32 lks.
Y. Birch	30"	S22°W	53 lks.

## Description of corner evidence found:

No corner evidence was recovered.

The corner position is re-established at proportionate distance and on line  
between the Southeast and Southwest Section Corners of Section 33.

## Description of monument and accessories I established to perpetuate the original location of this corner.

At the corner position, set a 2½ inch diameter aluminum pipe monument, 3 feet long,  
2½ feet in the ground, with an aluminum cap stamped; T39N, R14E, 1/4, S33, S4, T38N,  
1986, S-1107. From which the following new blazed and scribed bearing trees bear;

Spruce	12"	N10°E	30.96 feet
W. Birch	13"	S65°E	24.74 feet
Steel Sign Post		North	1.00 feet

Dated at Hiles, Wis., this 27th day of January, 19 87.Signature William B. Cochran Title Land Surveyor Registration No. S-1107  
(County Surveyor, Registered Land Surveyor, or other duly authorized official)

Office of Register of Deeds, County of Forest, I hereby certify that the within  
instrument was filed in this office for record on the 11th day of March, 19 87.  
at 3:30 o'clock P. M.

Paul Aschenbrenner  
(Register of Deeds)

By \_\_\_\_\_ Deputy

43914330020

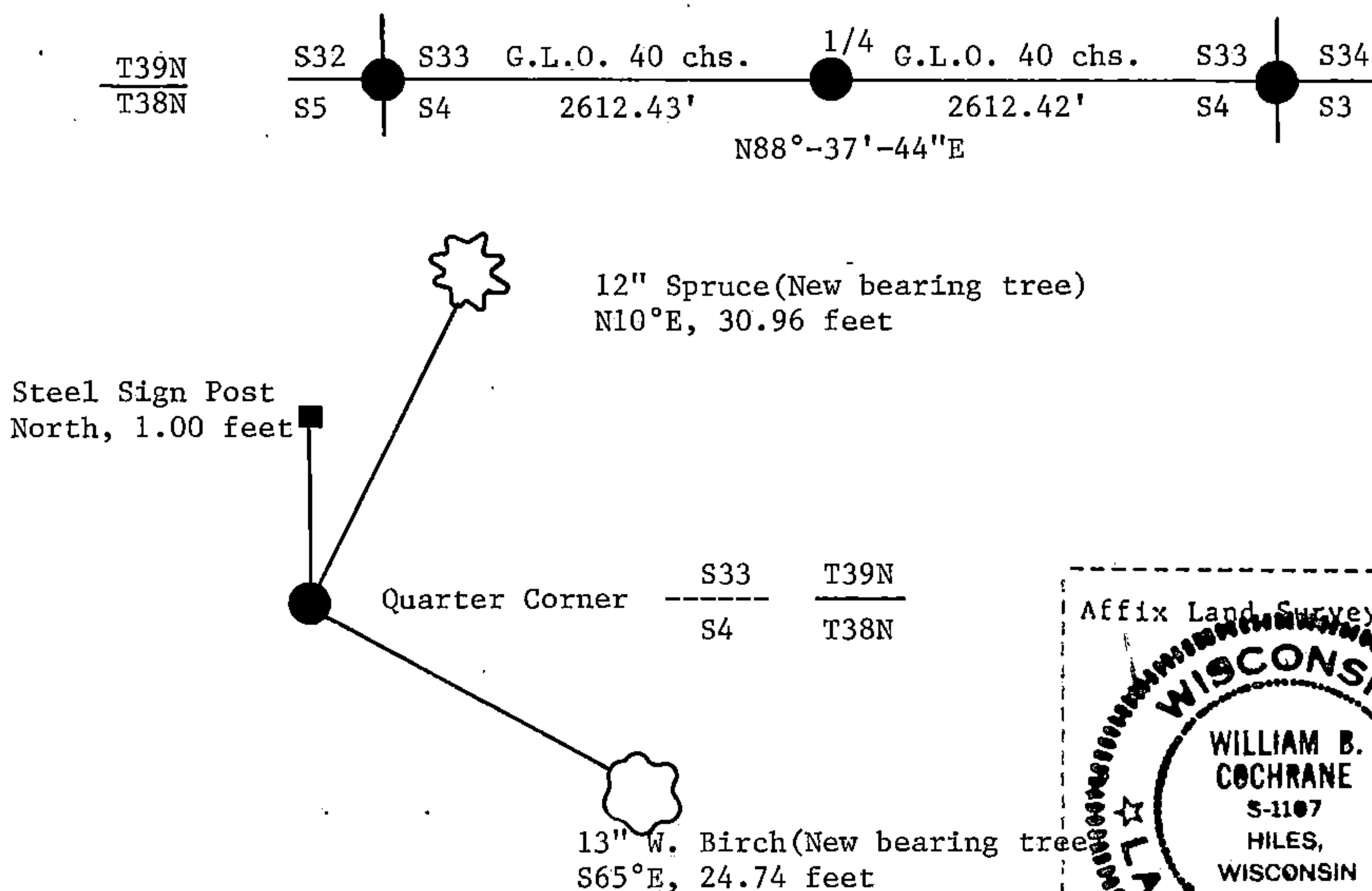
(e) Describe any material discrepancy between the location of the corner as restored or reestablished and the location of that corner as previously restored or reestablished by distance and direction. Show the discrepancy on the plan view drawing under (d), above. Show the distances between the corner as previously restored or reestablished and (1) the corner as restored or reestablished, and (2) to at least 2 of the witness monuments shown on the drawing in (d), above.

See drawing below.

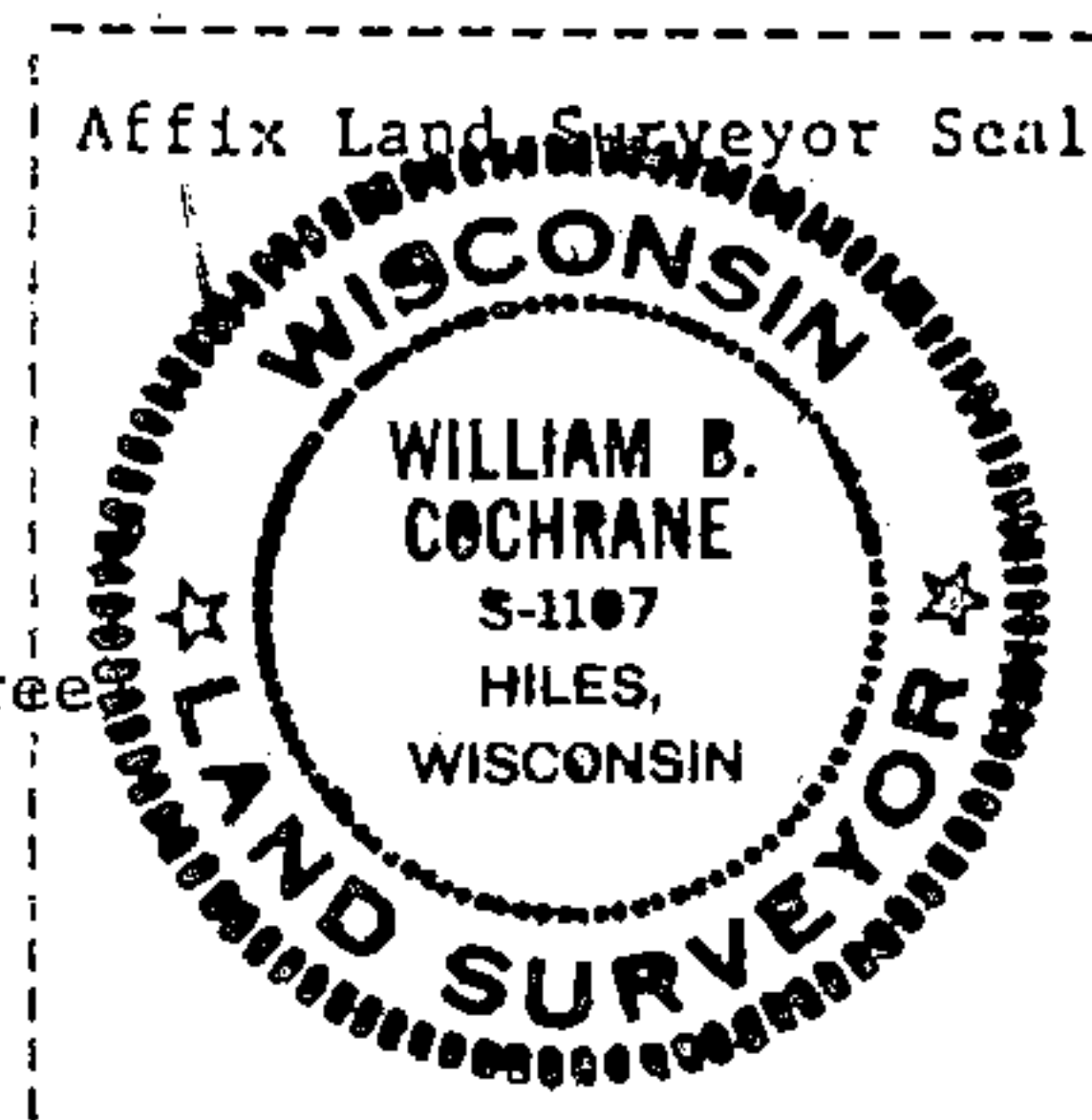
(f) Was the corner restored through acceptance of (1) an obliterated evidence location, or, (2) a found perpetuated location?

(g&h) Was the corner reestablished through lost corner proportionate methods? If so, show the method, including the directions and distances to other public land survey corners used as evidence or used for proportioning in determining the corner location?

This corner was re-established using State Plane Co-ordinates computed from Aerial Photography and a Global Positioning Satellite Survey. The computed corner position was located in the field using a North Seeking Gyro, an Electronic distance meter and/or a steel tape.



(i) I, William B. Cochrane  
(type or print name) certify that the corner location shown on this record was determined by me or under my direction and control and that this U.S. Public Land Survey Monument Record is correct and complete to the best of my knowledge and belief.



William B. Cochrane January 27, 1987  
Signature Date

Survey requested by: Edward W. Weger 3-9-87

District Ranger

Date

## U.S. PUBLIC LAND SURVEY MONUMENT RECORD

Index No. A-11

State of Wisconsin

County of Forest } ss.

I, William B. Cochrane, do hereby  
certify that on the 9th day  
of September, 1986, I found  
evidence of the North Quarter  
corner of Section 4  
Township 38, North, Range  
14 East, Fourth Principal Meridian,  
as described hereon; and that from this evidence  
I established a new monument and accessories  
as described hereon to perpetuate the original  
location of this corner.

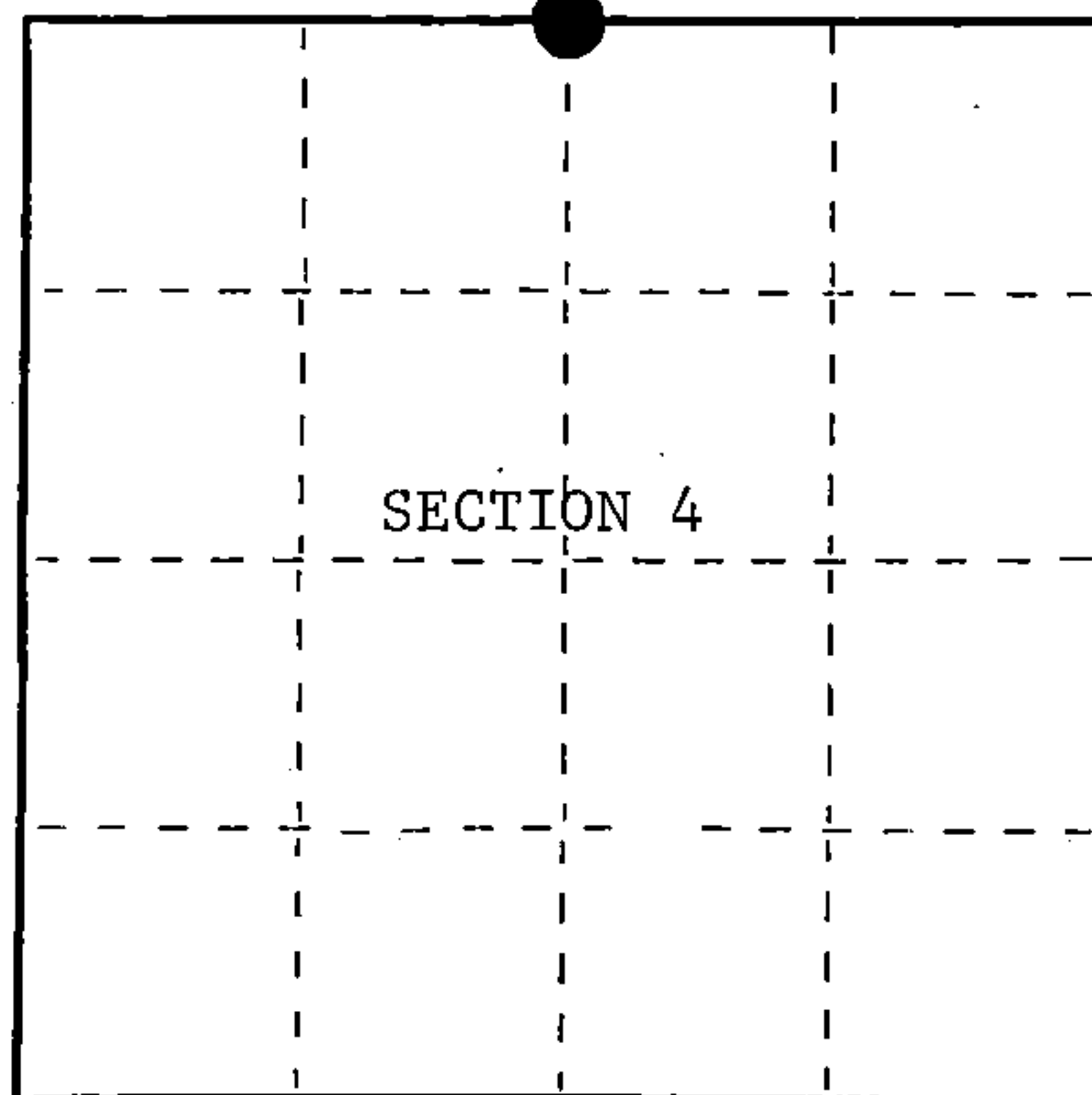
Resident witnesses:

David BrownellTony Tillman

State Plane Co-ordinates

N- 237,024.8852

E-2,319,401.2140



○ = Corner monument restored.

## History of original corner establishment:

Original Government Survey in 1858 by Artemas Curtis. West on the North side of  
Section 4, at 40 chains, set Quarter Section Post to Sections 4 and 33, from  
which the following bear;

Hemlock	16"	N20°E	32 lks.
Y. Birch	30"	S22°W	53 lks.

## Description of corner evidence found:

No corner evidence was recovered.

The corner position is re-established at proportionate distance and on line  
between the Northwest and Northeast Section Corners of Section 4.

## Description of monument and accessories I established to perpetuate the original location of this corner.

At the corner position, set a 2½ inch diameter aluminum pipe monument, 3 feet  
long, 2½ feet in the ground, with an aluminum cap stamped; T39N, R14E, 1/4, S33,  
S4, T38N, 1986, S-1107. From which the following new blazed and scribed bearing  
trees bear;

Spruce	12"	N10°E	30.96 feet
W. Birch	13"	S65°E	24.74 feet
Steel Sign Post		North	1.00 feet

Dated at Hiles, Wis., this 27th day of January, 1987Signature William B. Cochrane Title Land Surveyor Registration No. S-1107  
(County Surveyor, Registered Land Surveyor, or other duly authorized official)

Office of Register of Deeds, County of Forest, I hereby certify that the within  
instrument was filed in this office for record on the 11th day of March, 1987  
at 3:30 o'clock P. M.

Paul Aschenbrenner  
(Register of Deeds)

By \_\_\_\_\_ Deputy

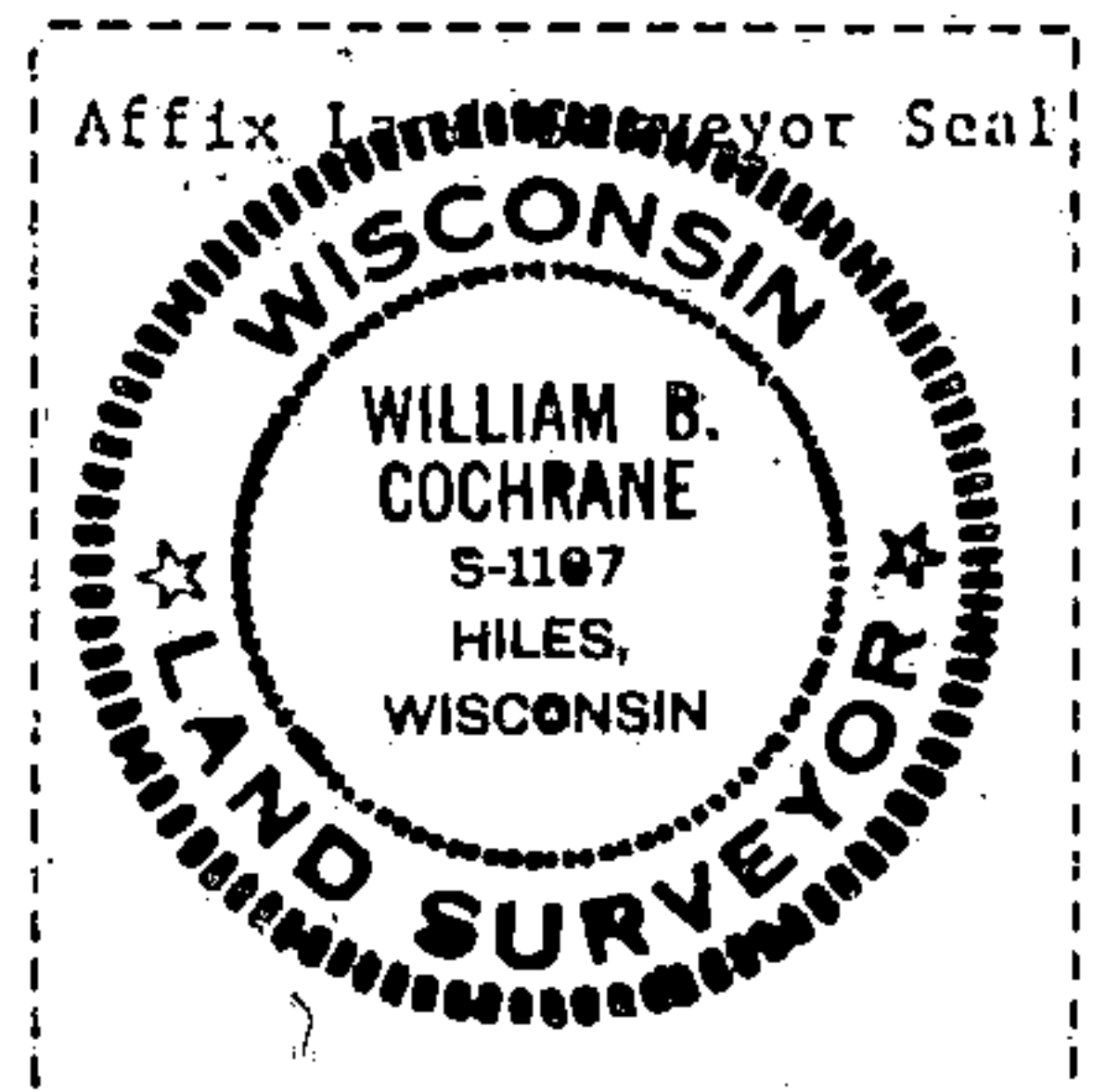
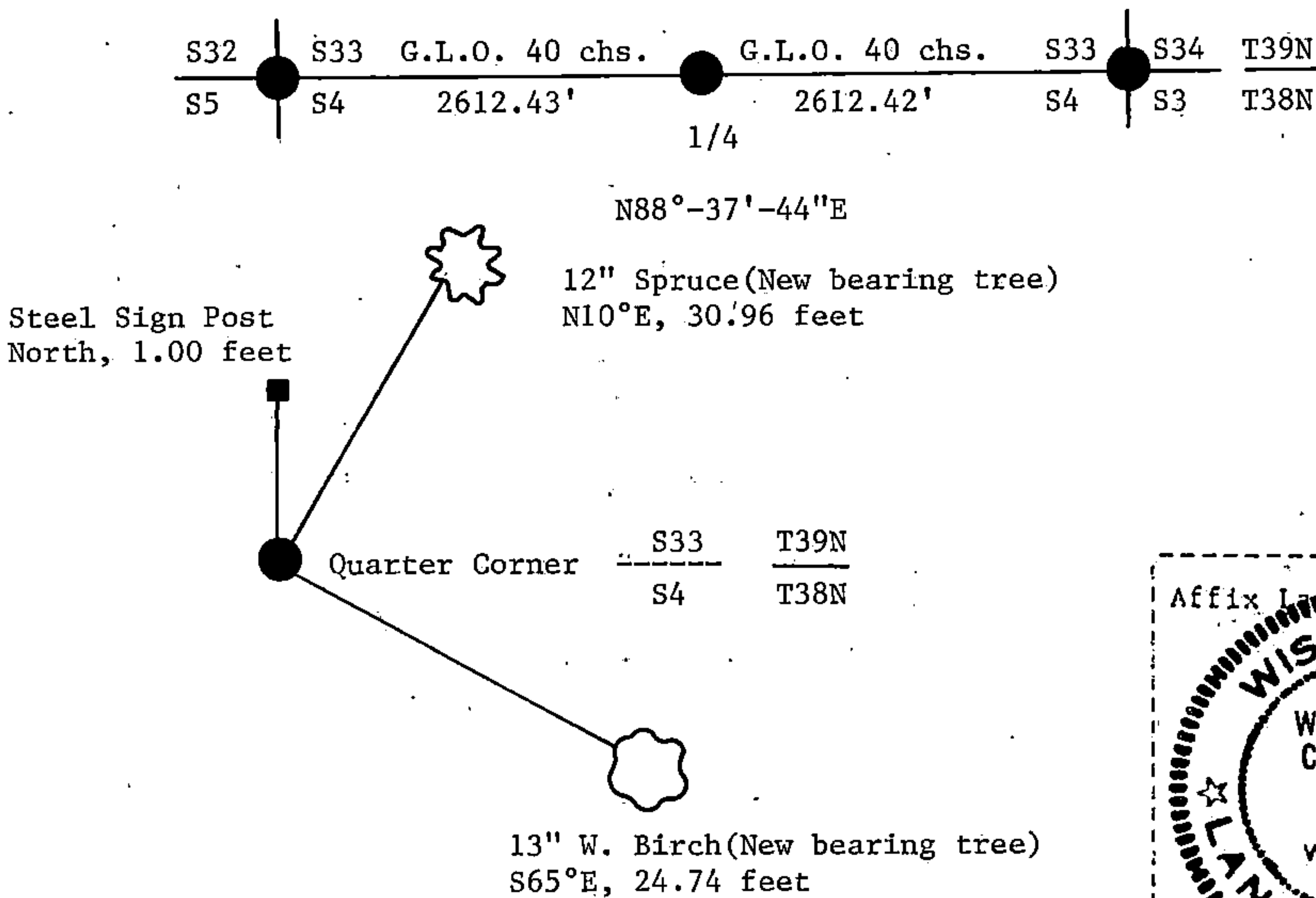
(e) Describe any material discrepancy between the location of the corner as restored or reestablished and the location of that corner as previously restored or reestablished by distance and direction. Show the discrepancy on the plan view drawing under (d), above. Show the distances between the corner as previously restored or reestablished and (1) the corner as restored or reestablished, and (2) to at least 2 of the witness monuments shown on the drawing in (d), above.

See drawing below.

(f) Was the corner restored through acceptance of (1) an obliterated evidence location, or, (2) a found perpetuated location?

(g&h) Was the corner reestablished through lost corner proportionate methods? If so, show the method, including the directions and distances to other public land survey corners used as evidence or used for proportioning in determining the corner location?

This corner was re-established using State Plane Co-ordinates computed from Aerial Photography and a Global Positioning Satellite Survey. The computed corner position was located in the field using a North Seeking Gyro, an Electronic Distance Meter, and/or a steel tape.



(i) William B. Cochrane  
(type or print name) certify that the corner location shown on this record was determined by me or under my direction and control and that this U.S. Public Land Survey Monument Record is correct and complete to the best of my knowledge and belief.

William B. Cochrane January 27, 1987  
Signature Date

Survey requested by Edward J. Jager 3-9-87  
District Ranger Date