

ESTABLISHED  
CERTIFIED LAND CORNER RESTORATION

State of Wisconsin

County of Forest

ss.

I, Jean F. Resvick, do hereby certify that on the 4 day of November, 1975, I found evidence of the established the North sixteenth corner of between Sections 35 and 36 Township 39 North, Range 14 East, Fourth Principal Meridian, as described hereon; and that ~~by this evidence~~ I established a new monument and accessories as described hereon to perpetuate the original location of this corner:

Description of original monument and accessories and subsequent restorations:

Township surveyed in 1865 by William E. Daugherty,  
One sixteenth corners not located in original survey.

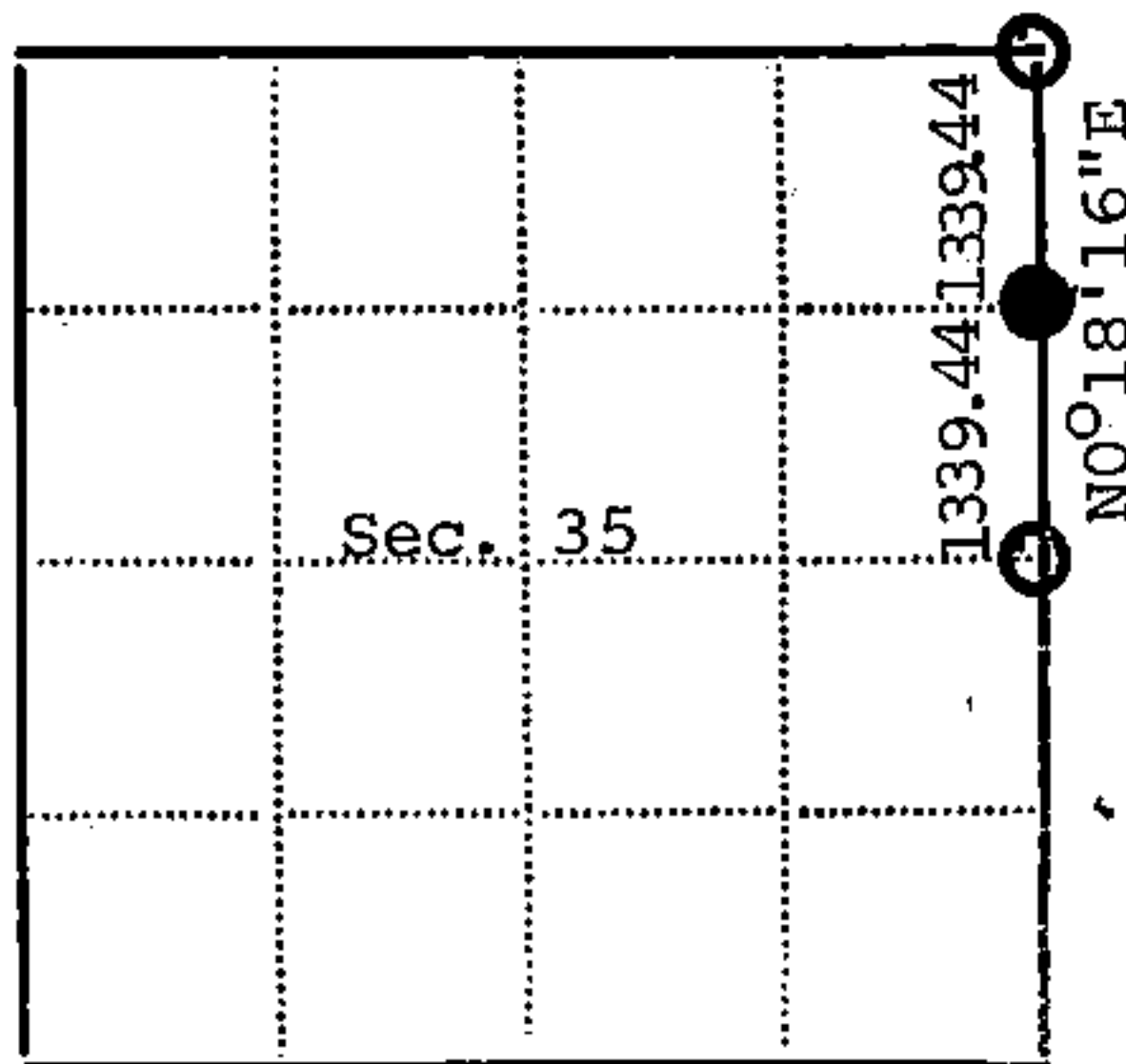
Description of corner evidence found:

No evidence or record of this corner having been established was found. I established the location for this corner at the mid point and on line between the East quarter corner of Section 35 and the Northeast corner of Section 35.  
The corner thus being located N0°18'16"E, 1339.44 feet from the East quarter corner of Section 35, and S0°18'16"W, 1339.44 feet from the Northeast corner of Section 35.

Description of monument and accessories I established to perpetuate the location of this corner:

At the location established above I set a 2 inch inside diameter galvanized iron pipe, 3 feet long, filled with concrete, 0.5 feet below the surface of the black top road with a brass cap stamped: T39N, R14E, N 1/16, S35, S36, 1975 S-802. Referenced to the following blazed and scribed new bearing trees.  
Red Pine 9, S50W, 46.57 feet  
Red pine 8, N65W, 29.30 feet

43914353000



- - Corner monument restored
- -

Resident witnesses.....

Dated at Rhineland Wisconsin, this 30 day of April, 1976.

Signature Jean F. Resvick Title Land Surveyor  
(County Surveyor, Registered Land Surveyor, or other duly authorized official)

Surveyors Registration No. S-802

DOCUMENT NUMBER  
**109610**

Office of Register of Deeds County of Forest

I hereby certify that the within instrument was filed in this office for record on the 2nd day of July, 1976, and was filed in Book No. .... Page No. .... of County Records.

Signature Eugene Stetson Title Register of Deeds

Township 39 North, Range 14 East, Section 35, Index No. W-21, Page No. ....

