

U.S. PUBLIC LAND SURVEY MONUMENT RECORD

Index No. A 11-12

State of Wisconsin }  
 County of Forest } ss.

History of original corner establishment:  
 Dependent resurvey by Guy R. Veal in 1941. Set a 6"x24"  
 concrete monument with a G.L.O. brass cap.

I, Robert H. Winat, do hereby  
 certify that on the 6th day  
 of February, 1985, I found  
 evidence of the meander  
 corner of 4  
 Township 40, North, Range  
12 East, Fourth Principal Meridian,  
 as described hereon; and that from this evidence  
 I established a new monument and accessories  
 as described hereon to perpetuate the original  
 location of this corner.

BT's: Hemlock 11" S42°W 38 lks.  
 Hemlock 6" N32°W 56 lks.

Found:  
 Rotted stump (Hemlock) N43°W 16 lks.  
 Stump hole N10°E 22 lks.

Description of corner evidence found:  
 Found G.L.O. monument.  
 Found BT's:

Stump mound N46°W 11 feet (original)  
 Stump (cut) S42°W 25 feet  
 Hemlock 14" N32°W 36.40 feet-set nail in tree

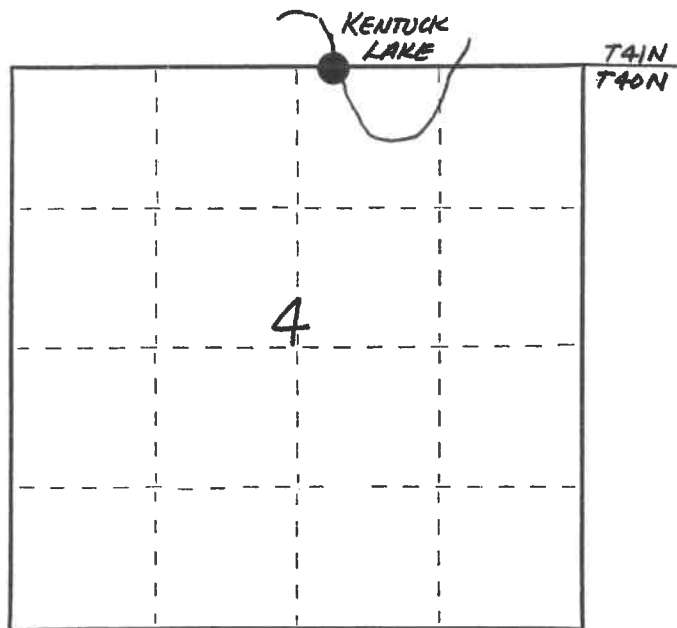
Resident witnesses:

Mike Stevens

Mike Lukasko

Description of monument and accessories I established to perpetuate the original location of this corner.  
 Blazed and scribed new BT's:

Yellow Birch 12" S27°E 21.03 feet to nail in tree  
 Sugar Maple 5" S25°W 28.00 feet to nail in tree  
 Steel Sign Post S2°E 1.62 feet



○ = Corner monument restored.

(over)

Dated at Rhineland, Wis., this 24th day of June 1985, 1985

Signature Robert H. Winat Title R.L.S. Registration No. 1040  
(County Surveyor, Registered Land Surveyor, or other duly authorized official)

Office of Register of Deeds, County of Forest, I hereby certify that the within  
 instrument was filed in this office for record on the 24th day of July, 1985  
 at 1:10 o'clock P. M.

Paul Aschebrenner  
 (Register of Deeds)

By.....Deputy

FORM NO. 985-A

H.C. Miller Company

Stock No. 26273

DOCUMENT NUMBER 128462

44012 04 4018

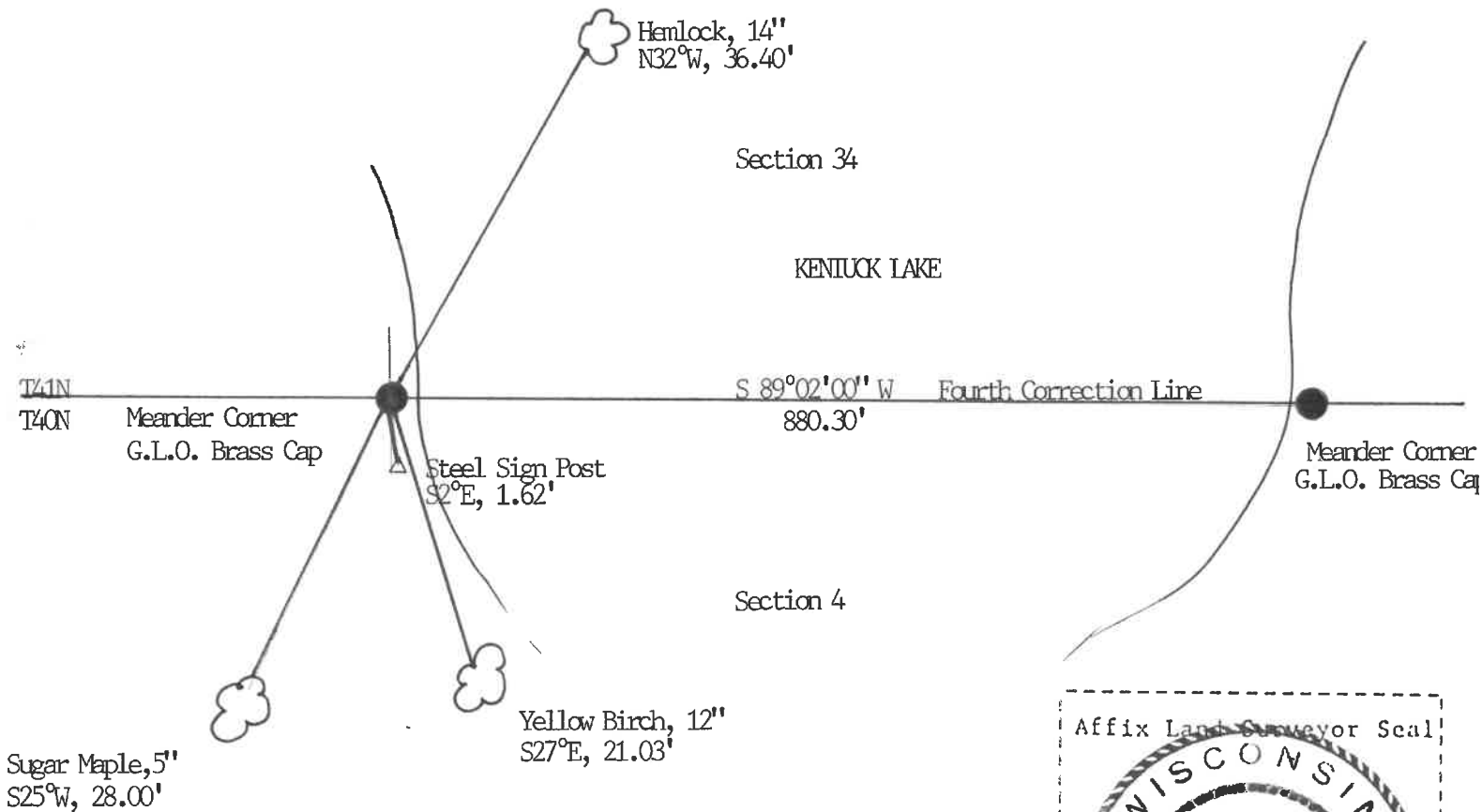
(e) Describe any material discrepancy between the location of the corner as restored or reestablished and the location of that corner as previously restored or reestablished by distance and direction. Show the discrepancy on the plan view drawing under (d), above. Show the distances between the corner as previously restored or reestablished and (1) the corner as restored or reestablished, and (2) to at least 2 of the witness monuments shown on the drawing in (d), above.

N/A.

(f) Was the corner restored through acceptance of (1) an obliterated evidence location, or, (2) a found perpetuated location?  
 Found perpetuated location.

(g&h) Was the corner reestablished through lost corner proportionate methods? If so, show the method, including the directions and distances to other public land survey corners used as evidence or used for proportioning in determining the corner location?

No.



(i) Robert H. Winat  
 (type or print name) certify that the corner location shown on this record was determined by me or under my direction and control and that this U.S. Public Land Survey Monument Record is correct and complete to the best of my knowledge and belief.

Robert H. Winat  
 Signature

6/24/85  
 Date