

U.S. PUBLIC LAND SURVEY MONUMENT RECORD

Index No. A-5

State of Wisconsin }  
 County of Forest } ss.

History of original corner establishment:  
 Dependent resurvey in 1941 by Guy R. Veal, set a 6"x24" concrete monument with a G.L.O. brass cap.

I, Robert H. Winat, do hereby certify that on the 28th day of January, 1985, I found evidence of the Section corner of 5-6 Township 40, North, Range 12 East, Fourth Principal Meridian, as described hereon; and that from this evidence I established a new monument and accessories as described hereon to perpetuate the original location of this corner.

BT's: Hemlock 10" S51½°E 68½ lks.  
 Hemlock 15" S21°W 102 lks.

Description of corner evidence found:  
 Found G.L.O. monument and brass cap.  
 Found BT's:

Yellow Birch 9" S63°E 8.57 feet (origin unknown)  
 Hemlock 10" S51½°E 45.64 feet (dead)  
 Hemlock 18" S20°W 67.19 feet

set nail in Yellow Birch and 18" Hemlock.

Resident witnesses:

Mike Stevens

Mike Lukasko

Description of monument and accessories I established to perpetuate the original location of this corner.  
 Blazed and scribed new BT's:

Hemlock 18" S2½°E 75.30 feet  
 Maple 8" N87°E 29.70 feet all to nail in tree  
 Steel Sign Post South 0.50 feet

(over)

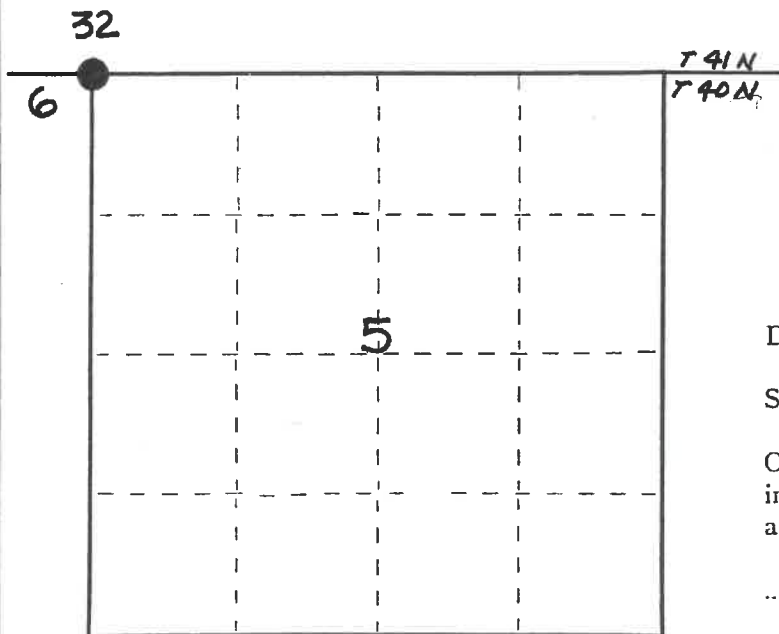
Dated at Rhineland, Wis., this 14 day of June, 1985

Signature Robert H. Winat Title R.L.S. Registration No. 1040  
(County Surveyor, Registered Land Surveyor or other duly authorized official)

Office of Register of Deeds, County of Forest, I hereby certify that the within instrument was filed in this office for record on the 24th day of July, 1985 at 1:10 o'clock P. M.

Paul Aschenbrenner  
 (Register of Deeds)

By.....Deputy



○ = Corner monument restored.

FORM NO. 985-A

H.C. Miller Company

Stock No. 26273

DOCUMENT NUMBER 128458

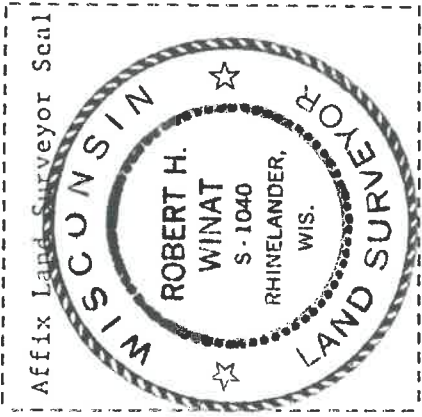
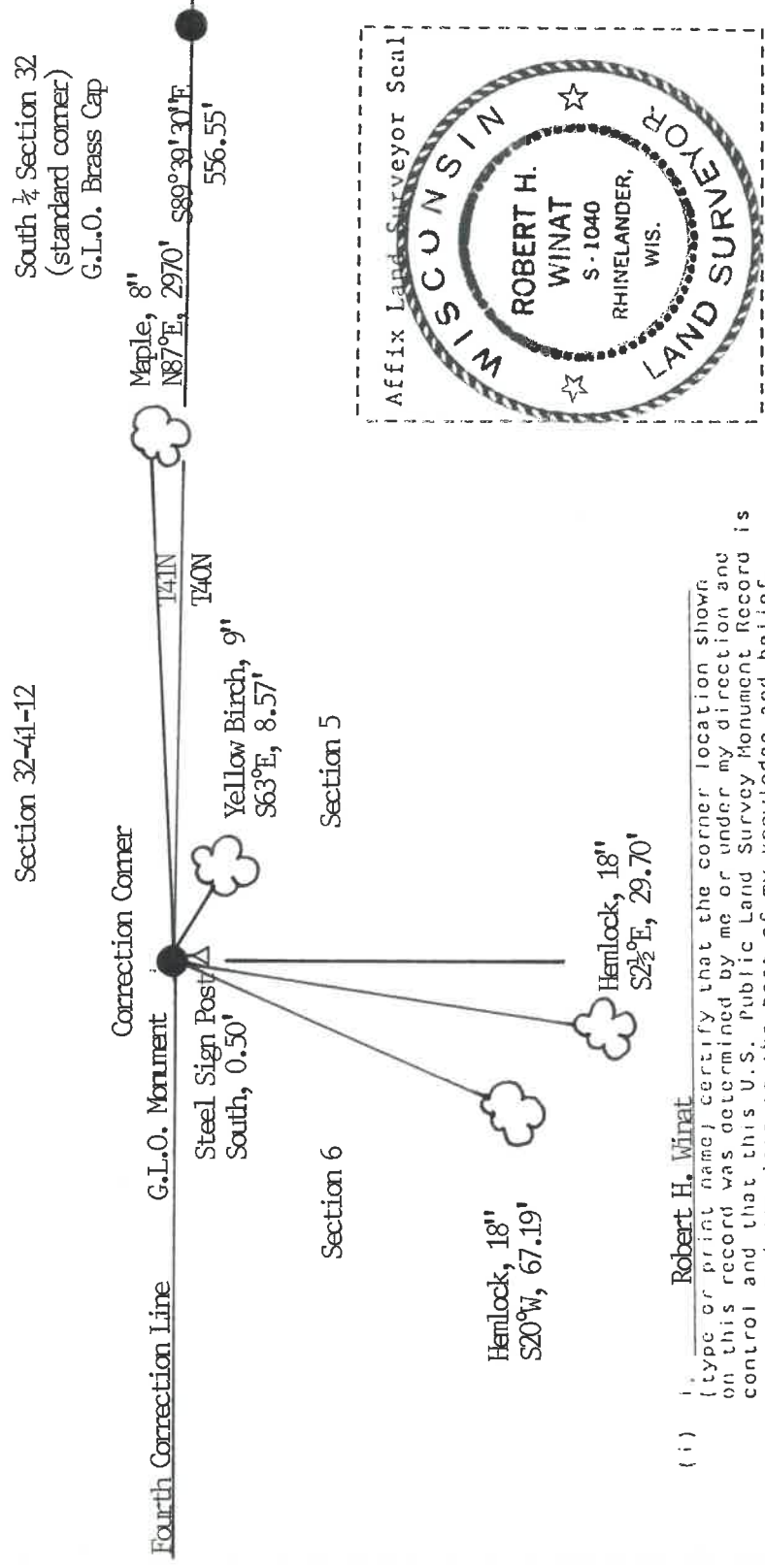
44012064000

1/0-12

(e) Describe any material discrepancy between the location of the corner as restored or reestablished and the location of that corner as previously restored or reestablished by distance and direction. Show the discrepancy on the plan view drawing under (d), above. Show the distances between the corner as previously restored or reestablished and (1) the corner as restored or reestablished, and (2) to at least 2 of the witness monuments shown on the drawing in (d), above.  
 N/A.

(f) Was the corner restored through acceptance of (1) an obliterated evidence location, or, (2) a found perpetuated location?  
 Found perpetuated location.

(g&h) Was the corner reestablished through lost corner proportionate methods? If so, show the method, including the directions and distances to other public land survey corners used as evidence or used for proportioning in determining the corner location?  
 No.



(i) I, Robert H. Winat (type or print name) certify that the corner location shown on this record was determined by me or under my direction and control and that this U.S. Public Land Survey Monument Record is correct and complete to the best of my knowledge and belief.

Signature Robert H. Winat Date 14 June 1985