

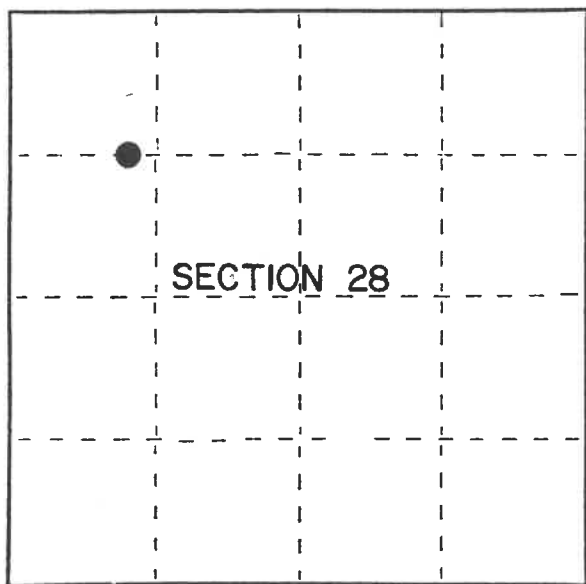
U.S. PUBLIC LAND SURVEY MONUMENT RECORD

Index No. S-9,10

State of Wisconsin }
County of Forest } ss.

I Gary L. Pisoni, do hereby
certify that on the 16th day
of August, 19 89, I found
evidence of the W.C. of the NW 1/16
corner of Section 28
Township 40, North, Range
12E, Fourth Principal Meridian,
as described hereon; and that from this evidence
I established a new monument and accessories
as described hereon to perpetuate the original
location of this corner.

Resident witnesses:



● = Corner monument restored.

History of original corner establishment:

Corner was set in 1980 by the U.S.F.S. under the direction of William B. Cochrane, a Registered Land Surveyor during the sub-division of Section 28.

U.S.F.S. monumented the witness corner on West shore of Gertrude Lake between Government Lots 2 and 3 and set a 2½ inch diameter aluminum pipe monument 60" long with an aluminum cap, stamped to identify the corner. Corner references established:

Spruce	7"	N 33°W.	4.14 feet
Balsam	9"	S 81°E.	3.63 feet
Steel sign post		North	0.5 feet

NW Sixteenth corner position is in Lake bearing N 87°47.9'E, 286.43 feet.
Description of corner evidence found:

Monument as described and in place.

Corner references recovered:

Black Spruce	8"	N 33°W	4.14 feet
Steel sign post		North	0.5 feet

Description of monument and accessories I established to perpetuate the original location of this corner.

Blazed and scribed the following new bearing tree:

Hemlock	7"	S 10°W.	27.63 feet
---------	----	---------	------------

Dated at Iron River, MI, ~~xxx~~ this 26th day of August, 19 89

Signature Gary L. Pisoni Title Land Surveyor Registration No. S-1634
(County Surveyor, Registered Land Surveyor, or other duly authorized official)

Office of Register of Deeds, County of Forest, I hereby certify that the within
instrument was filed in this office for record on the 8th day of March, 19 90
at 1:00 o'clock P. M.

Paul Aschenbrenner
(Register of Deeds)

By _____ Deputy

FORM NO. 985-A

H.C. Miller Company
Madison, Wisconsin

Stock No. 26273

DOCUMENT NUMBER

139267

44012283032

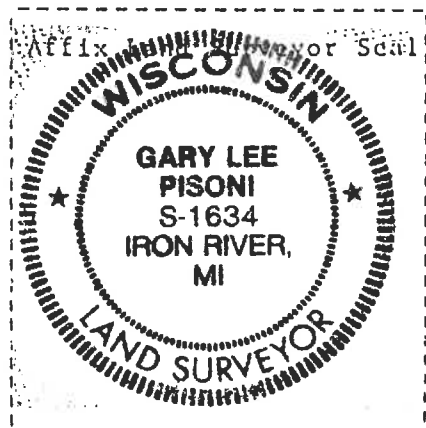
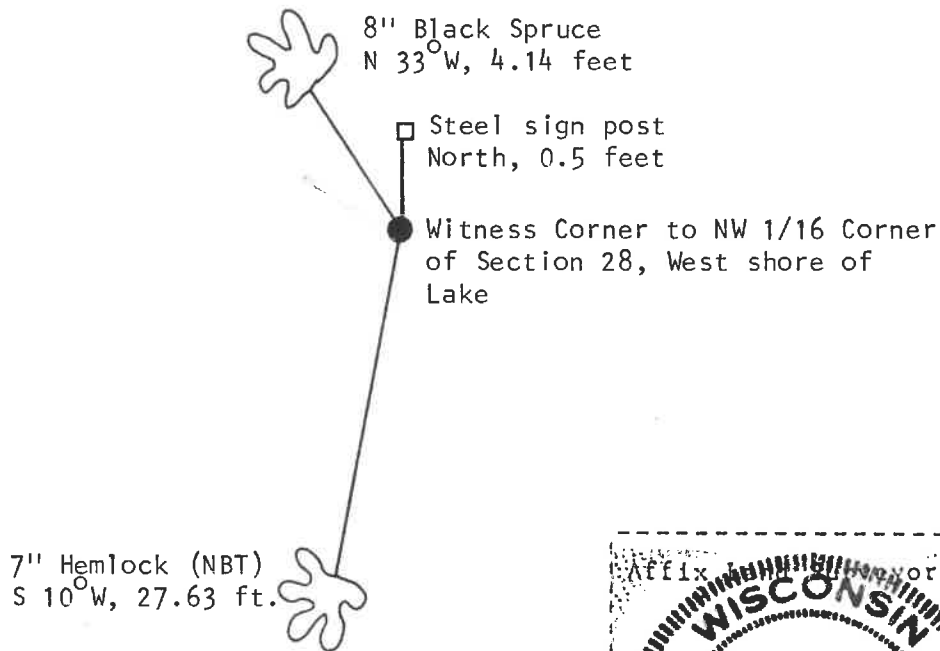
e) Describe any material discrepancy between the location of the corner as restored or reestablished and the location of that corner as previously restored or reestablished by distance and direction. Show the discrepancy on the plan view drawing under (d), above. Show the distances between the corner as previously restored or reestablished and (1) the corner as restored or reestablished, and (2) to at least 2 of the witness monuments shown on the drawing in (d), above.

See drawing below.

(f) Was the corner restored through acceptance of (1) an obliterated evidence location, or, (2) a found perpetuated location?

Restored through acceptance of a found perpetuated location.

(g&h) Was the corner reestablished through lost corner proportionate methods? If so, show the method, including the directions and distances to other public land survey corners used as evidence or used for proportioning in determining the corner location?



(i) I, Gary L. Pisoni
(type or print name) certify that the corner location shown on this record was determined by me or under my direction and control and that this U.S. Public Land Survey Monument Record is correct and complete to the best of my knowledge and belief.

Signature

Gary L. Pisoni

Date

8-26-89

Survey requested by:

District Ranger

Sam Gordon

Date

1/5/90