

U.S. PUBLIC LAND SURVEY MONUMENT RECORD

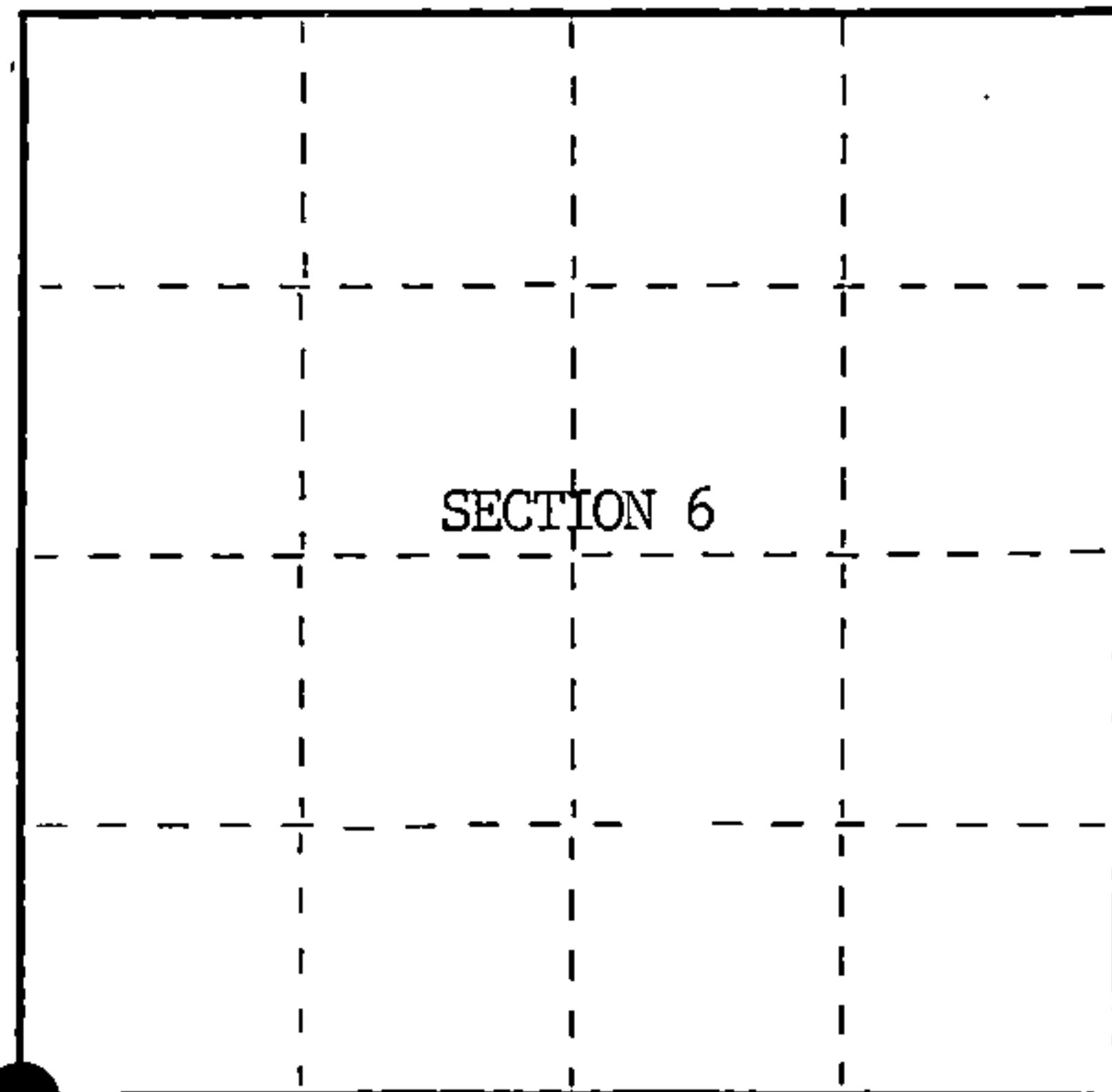
Index No. E-1

State of Wisconsin }
County of Forest } ss.

I, William B. Cochrane, do hereby
certify that on the 10th day
of July, 1985, I found
evidence of the Southwest Section
corner of Section 6
Township 40, North, Range
14 East, Fourth Principal Meridian,
as described hereon; and that from this evidence
I established a new monument and accessories
as described hereon to perpetuate the original
location of this corner.

Resident witnesses:

David Brownell



○ = Corner monument restored.

History of original corner establishment:

Original Government Survey in 1858 by Alfred Millard. Dependent Resurvey in 1945 by Hugh B. Crawford. The point for the corner of Sections 1, 6, 7 and 12 is determined on the center-line of County Trunk A, and North of a Reference Post on the South side of the road. Corner position not monumented.

Note: County Trunk A is now State Highway 70 and has been widened.

Description of corner evidence found:

State Highway 70 bears East and West

The corner position was re-established at proportionate distance and on line between the Quarter Corner to Sections 1 and 6 and the Quarter Corner to Sections 7 and 12.

No original corner evidence was recovered.

Description of monument and accessories I established to perpetuate the original location of this corner.

At the re-established corner position, set a railroad spike flush with the surface of State Highway 70. From which the following new blazed and scribed bearing trees bear;

R. Pine	11"	N18°E	100.95 feet
R. Pine	10"	S20°E	77.13 feet
Maple(E.Fork)	5"	S28°W	120.62 feet
Spruce	8"	N20°W	107.38 feet

Center-Line of State Highway 70 bears South 8.10 feet.

Dated at Hiles, Wis., this 8th day of January, 1986

Signature William B. Cochrane Title Land Surveyor Registration No. S-1107
(County Surveyor, Registered Land Surveyor, or other duly authorized official)

Office of Register of Deeds, County of Forest, I hereby certify that the within
instrument was filed in this office for record on the 11th day of March, 1987
at 3:30 o'clock P. M.

Paul Achenbrenner
(Register of Deeds)

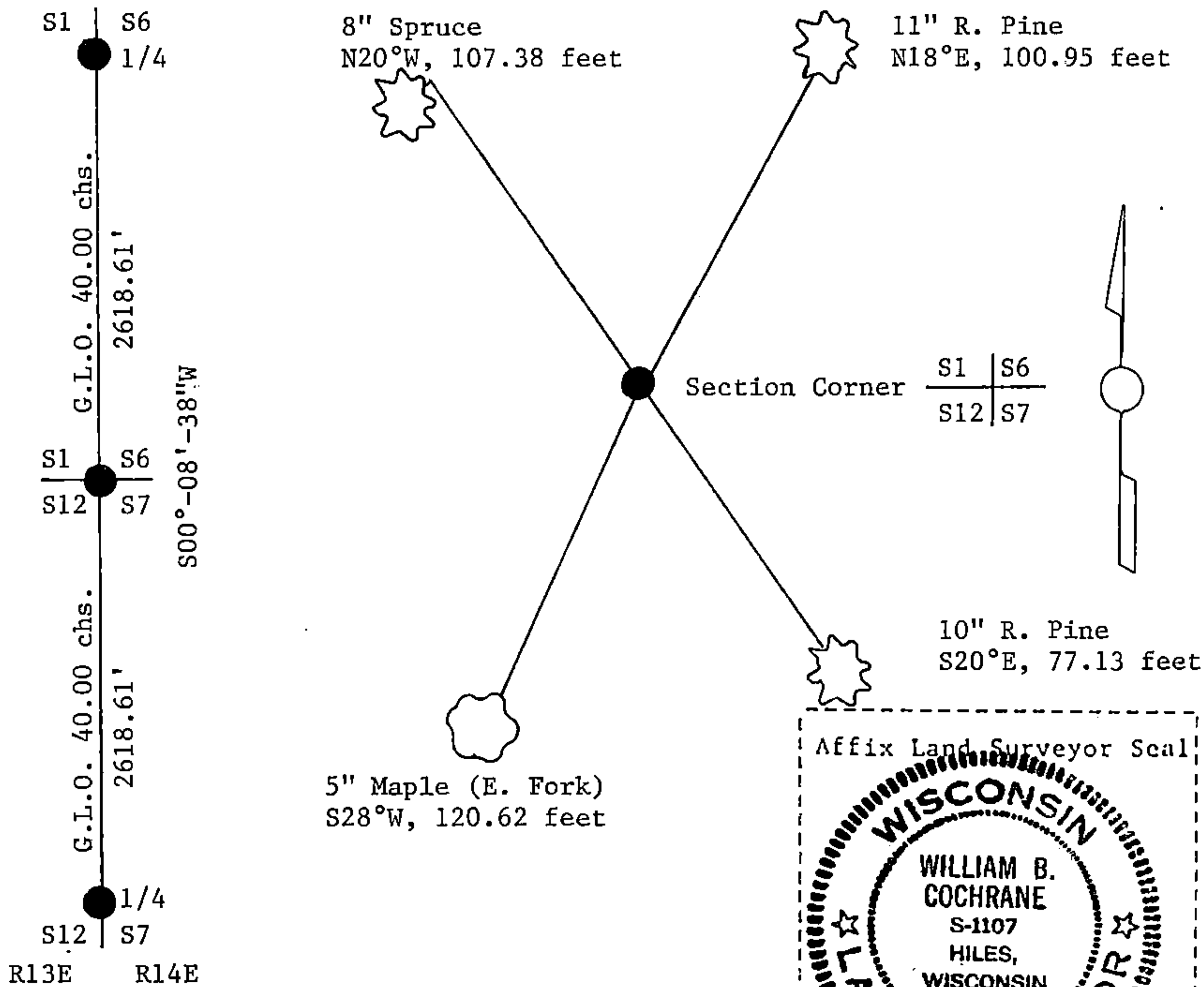
By _____ Deputy

(e) Describe any material discrepancy between the location of the corner as restored or reestablished and the location of that corner as previously restored or reestablished by distance and direction. Show the discrepancy on the plan view drawing under (d), above. Show the distances between the corner as previously restored or reestablished and (1) the corner as restored or reestablished, and (2) to at least 2 of the witness monuments shown on the drawing in (d), above.

See drawing below.

(f) Was the corner restored through acceptance of (1) an obliterated evidence location, or, (2) a found perpetuated location?

(g&h) Was the corner reestablished through lost corner proportionate methods? If so, show the method, including the directions and distances to other public land survey corners used as evidence or used for proportioning in determining the corner location?
Re-established through lost corner proportionate methods.



(i) I, William B. Cochrane
(type or print name) certify that the corner location shown on this record was determined by me or under my direction and control and that this U.S. Public Land Survey Monument Record is correct and complete to the best of my knowledge and belief.

William B. Cochrane October 14, 1986
Signature Date

Certificate ready for filing: [Signature] 3-9-87
District Ranger Date

U.S. PUBLIC LAND SURVEY MONUMENT RECORD

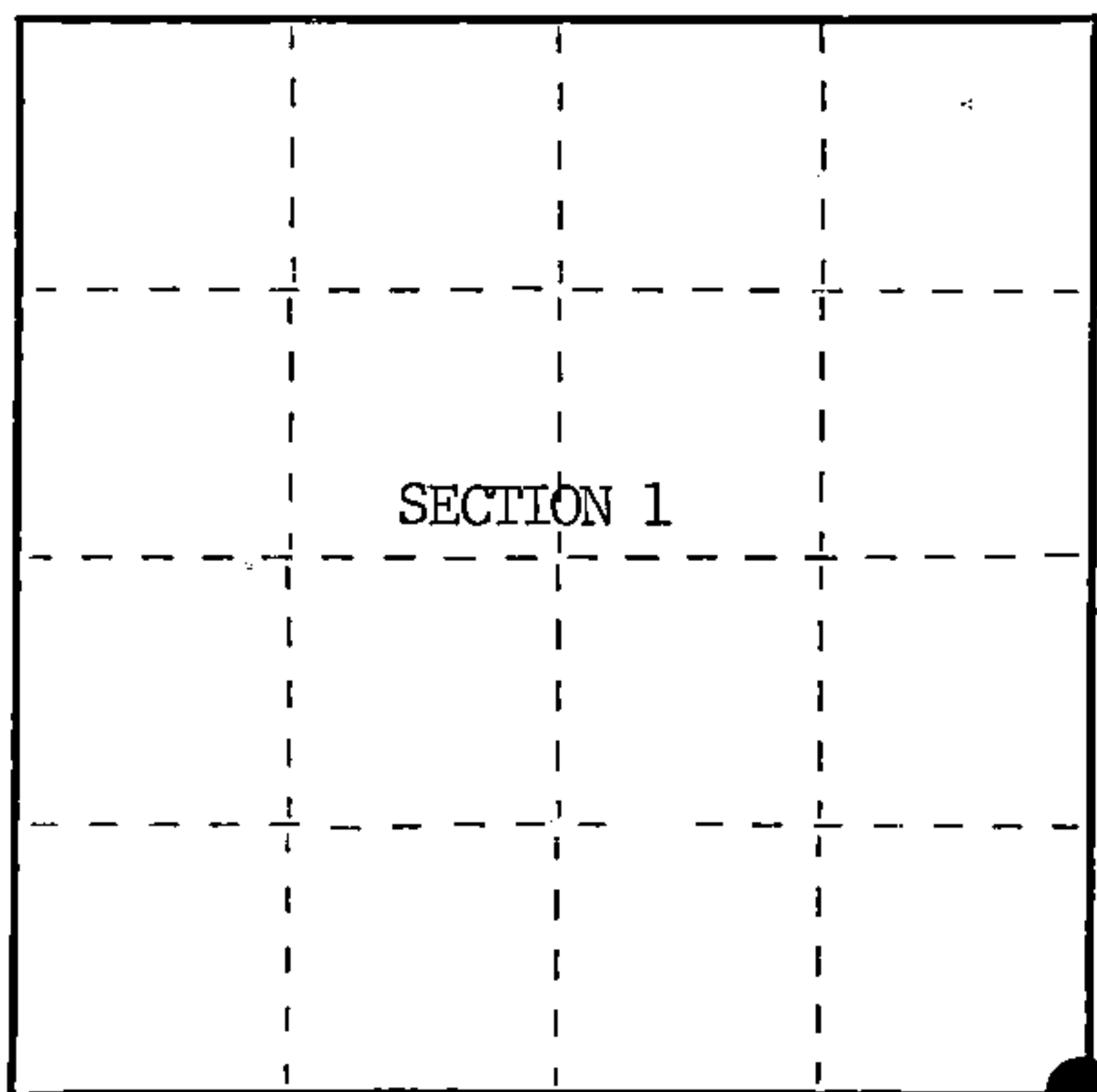
Index No. E-25

State of Wisconsin }
County of Forest } ss.

I, William B. Cochrane, do hereby certify that on the 10th day of July, 1985, I found evidence of the Southeast Section corner of Section 1 Township 40, North, Range 13 East, Fourth Principal Meridian, as described hereon; and that from this evidence I established a new monument and accessories as described hereon to perpetuate the original location of this corner.

Resident witnesses:

David Brownell



○ = Corner monument restored.

History of original corner establishment:

Original Government Survey in 1858 by Alfred Millard. Dependent Resurvey in 1945 by Hugh B. Crawford. The point for the corner of Sections 1, 6, 7, and 12, is determined on the center-line of County Trunk A, and North of a Reference Post on the South side of the road. Corner position is not monumented.

Description of corner evidence found:

State Highway 70 bears East and West.

The corner position was re-established at proportionate distance and on line between the Quarter Corner to Sections 1 and 6 and the Quarter Corner to Sections 7 and 12.

No original corner evidence was recovered.

Description of monument and accessories I established to perpetuate the original location of this corner.

At the re-established corner position, set a railroad spike flush with the surface of State Highway 70. From which the following new blazed and scribed bearing trees bear;

R. Pine	11"	N18°E	100.95 feet
R. Pine	10"	S20°E	77.13 feet
Maple(E.Fork)	5"	S28°W	120.62 feet
Spruce	8"	N20°W	107.38 feet

Center Line of State Highway 70 bears South 8.10 feet.

Dated at Hiles, Wis., this 8th day of January, 1986

Signature William B. Cochrane Title Land Surveyor Registration No. S-1107
(County Surveyor, Registered Land Surveyor, or other duly authorized official)

Office of Register of Deeds, County of Forest, I hereby certify that the within instrument was filed in this office for record on the 11th day of March, 1987 at 3:30 o'clock P. M.

Paul Aschenbrenner
(Register of Deeds)

By _____ Deputy

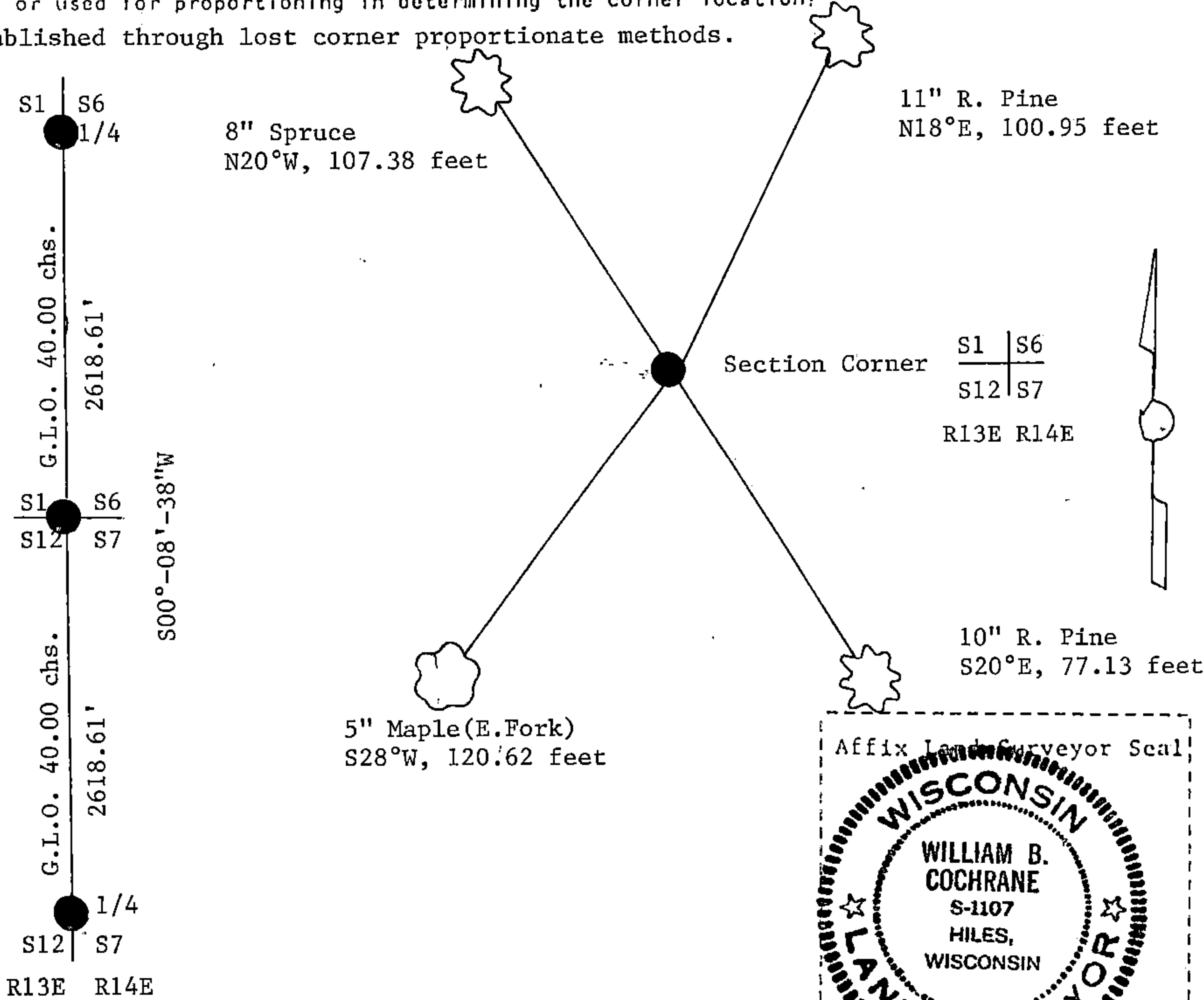
(e) Describe any material discrepancy between the location of the corner as restored or reestablished and the location of that corner as previously restored or reestablished by distance and direction. Show the discrepancy on the plan view drawing under (d), above. Show the distances between the corner as previously restored or reestablished and (1) the corner as restored or reestablished, and (2) to at least 2 of the witness monuments shown on the drawing in (d), above.

See drawing below.

(f) Was the corner restored through acceptance of (1) an obliterated evidence location, or, (2) a found perpetuated location?

(g&h) Was the corner reestablished through lost corner proportionate methods? If so, show the method, including the directions and distances to other public land survey corners used as evidence or used for proportioning in determining the corner location?

Re-established through lost corner proportionate methods.



(i) 1. William B. Cochrane
(type or print name) certify that the corner location shown on this record was determined by me or under my direction and control and that this U.S. Public Land Survey Monument Record is correct and complete to the best of my knowledge and belief.

William B. Cochrane October 14, 1986
Signature Date

Certificate ready for filing: [Signature] 8-5-87
District Ranger Date

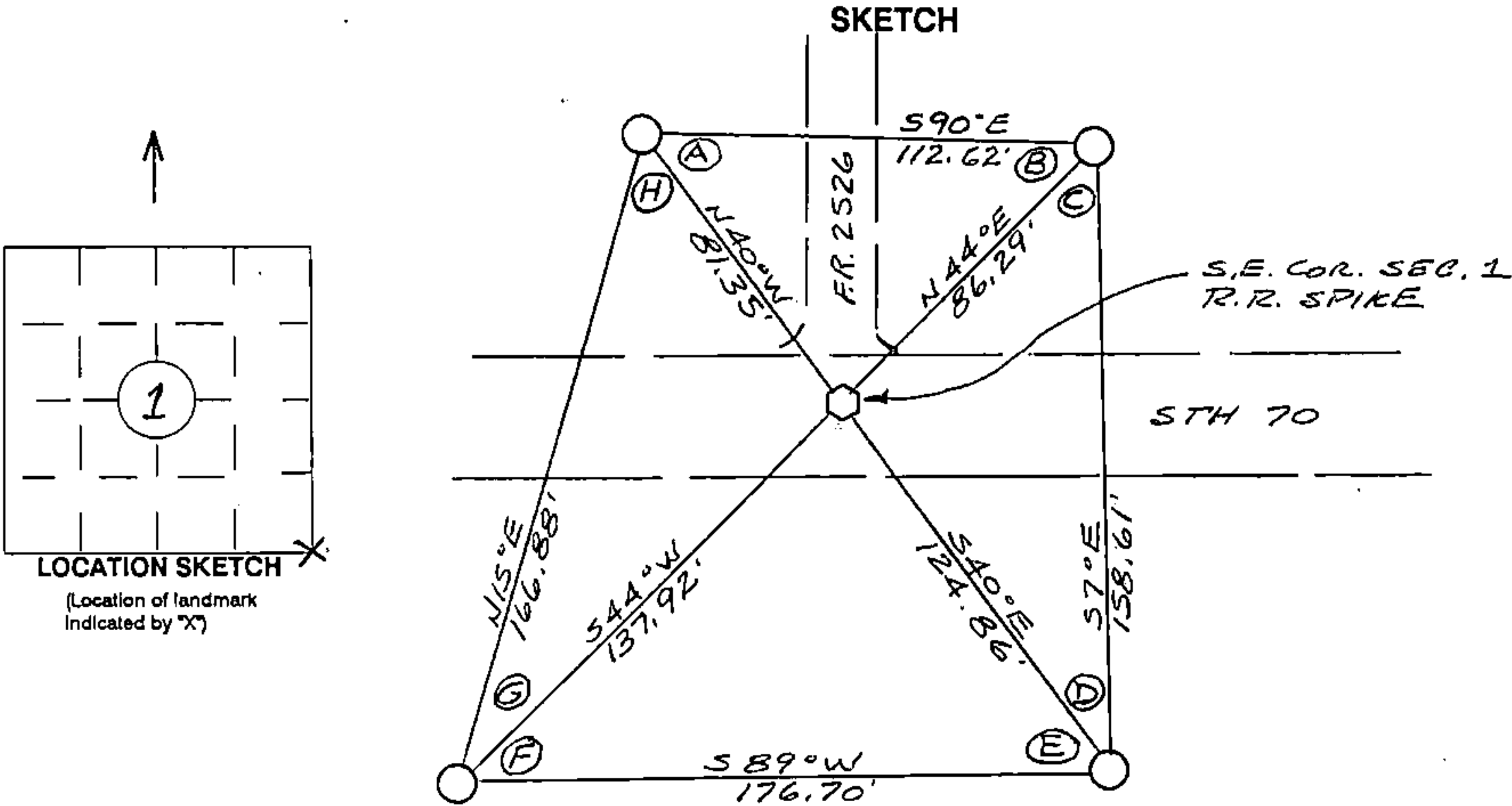
ORIGINAL ON FILE IN CO CLERK'S OFFICE
COPY HERE FOR REFERENCE

RECORD AND CERTIFICATION OF U.S.
PUBLIC LAND SURVEY CONTROL STATION

Wisconsin Department of Transportation

ED718 687

District 7	Project ID 9090-01-00	Located By J.R. WALLIN - SURVEY CREW CHIEF		
Corner S.E. COR. SEC. 1	Township T40N	Range (E,W) R13E	County FOREST	
Wisconsin Coordinates FROM AYRES	East (X) 2,305,097.30	North (Y) 294,444.11	Elevation (Z)	Zone N
Control Station Name	East (X)	North (Y)	Elevation (Z)	Zone
Horizontal - NORTH AMERICAN, 1927		CONTROL DATUM Vertical - MEAN SEA LEVEL, 1929 ADJUSTMENT		
SURVEY CONTROL				
Horizontal -		Vertical -		Order



I hereby certify that on the date of NOV. 7, 1994
the above corner was located by a marker and/or references established by
WILLIAM B. COCHRANE 5-1107
(registered land surveyor) (registration no.)

I further certify that to perpetuate the location of said corner, on the date of
NOV. 7, 1994 at the exact location thereof,
~~a permanent marker~~ or witness monuments consisting of
FOUR 2 1/2" X 30" BERNITSEN MAGNETIC
ALUMINUM MONUMENTS
were located as shown above.

ANGLE TABLE	
A =	49° 40' 58"
B =	45° 57' 53"
C =	51° 34' 31"
D =	32° 46' 38"
E =	50° 57' 49"
F =	44° 41' 03"
G =	29° 01' 16"
H =	55° 19' 52"

Signature (District Survey Supervisor) COORD. <u>Jack R. Wallin</u>		
--	--	--

44013010000

S.E. COR. (CORNER)
1 (SECTION)
T40N (TOWNSHIP)
13E (RANGE)