

160523

FORM 985 H. C. MILLER CO., MILWAUKEE

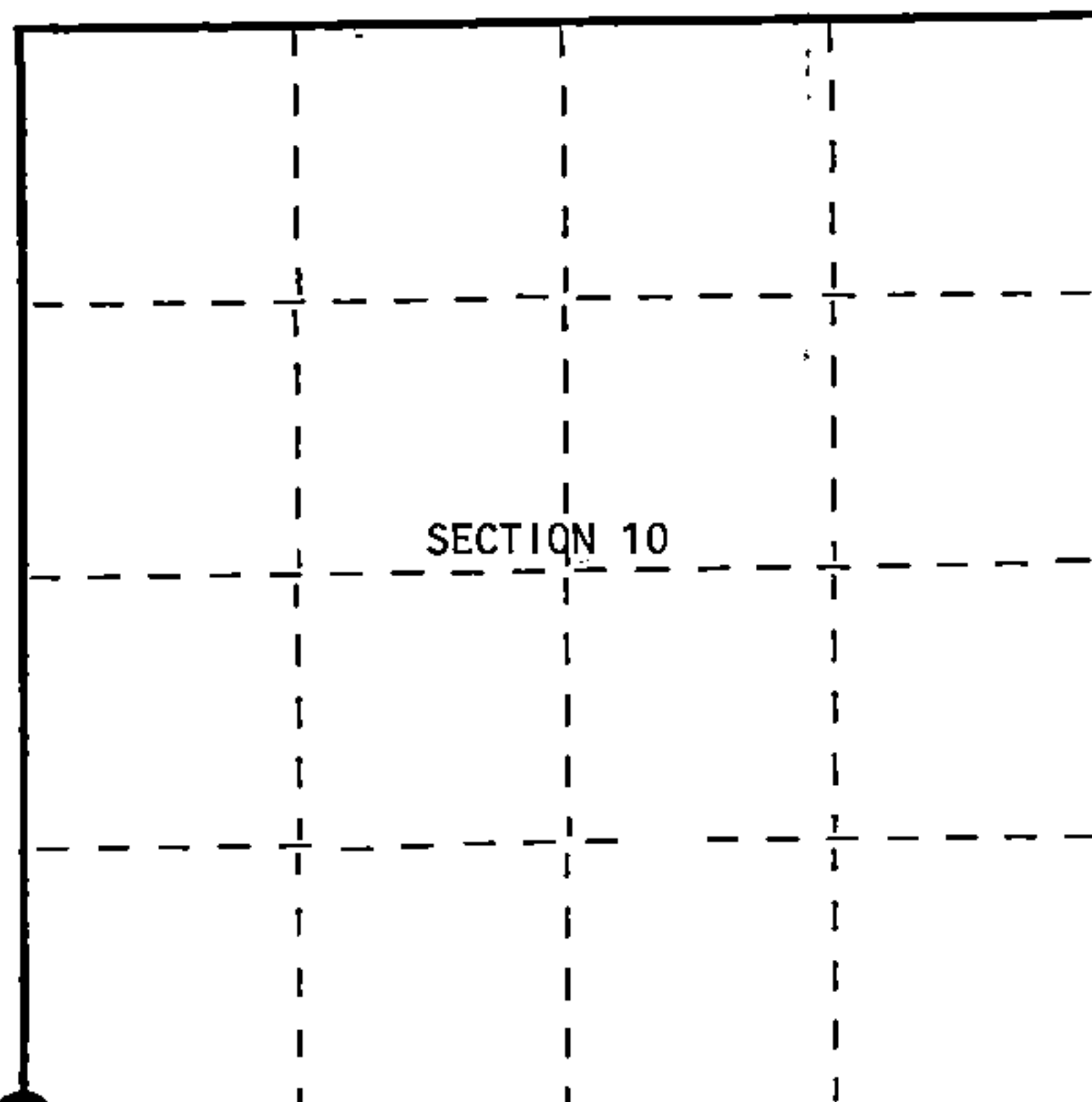
State of Wisconsin }
County of Forest } ss.

I, James H. Moore, do hereby
certify that on the 17th day
of June, 1996, I found
evidence of the Southwest
corner of Section 10
Township 40, North, Range
13 East, Fourth Principal Meridian,
as described hereon; and that from this evidence
I established a new monument and accessories
as described hereon to perpetuate the original
location of this corner.

Resident witnesses:

Stuart Peterson

Steve Applekamp



● = Corner monument restored.

CERTIFIED LAND CORNER RESTORATION

Index No. J-13

History of original corner establishment:

Original government survey in 1865 by William E. Daugherty. Dependent resurvey in 1975 by Barry Krebs. In place of old scribed post, set an iron post, 2½ feet long, 2½ inches in diameter, with a brass cap marked: T40N, R13E, S9, S10, S15, S16, 1975.

Description of corner evidence found:

Found monument as described in place.

Description of monument and accessories I established to perpetuate the original location of this corner.

At corner position placed the following references:

Aspen (existing BT)	4"	N41°E	10.58 feet
White Pine	18"	S23°E	16.12 feet
Spruce	5"	S38°W	33.21 feet
Twin Spruce	9"	N08°W	33.68 feet
Steel Sign Post	-	South	0.57 feet

Dated at Hiles, Wis., this 6th day of January, 1997.

Signature: James H. Moore Title: Land Surveyor Registration No. S-1641
(County Surveyor, Registered Land Surveyor, or other duly authorized official)

Office of Register of Deeds, County of Forest, I hereby certify that the within
instrument was filed in this office for record on the 17th day of December, 1997
at 9:27 o'clock A.M.

(Register of Deeds)

By: [Signature] Deputy

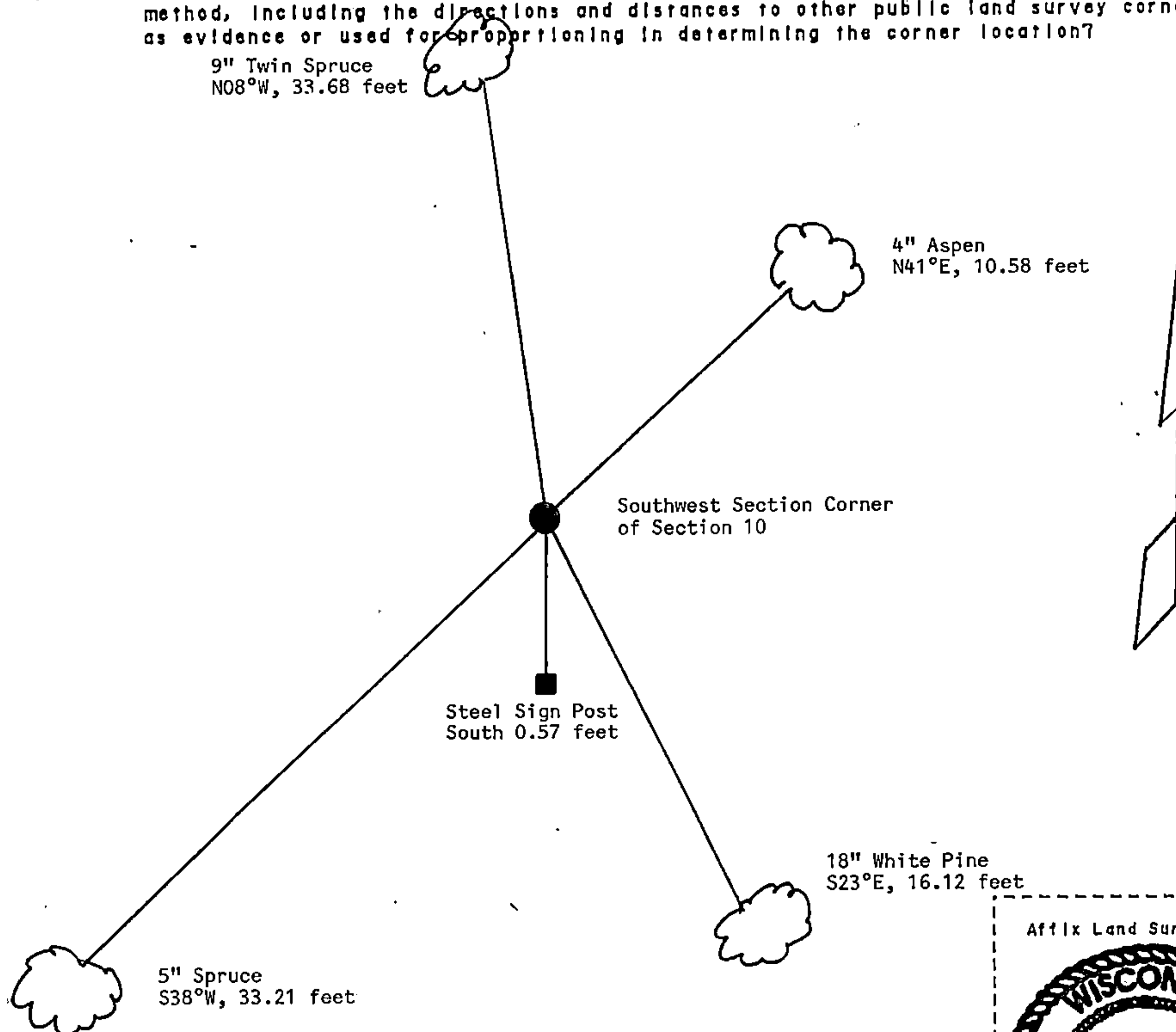
44013090000

- (a) Describe any material discrepancy between the location of the corner as restored or reestablished and the location of that corner as previously restored or reestablished by distance and direction. Show the discrepancy on the plan view drawing under (d), above. Show the distances between the corner as previously restored or reestablished and (1) the corner as restored or reestablished, and (2) to at least 2 of the witness monuments shown on the drawing in (d), above.

See Sketch Below.

- (f) Was the corner restored through acceptance of (1) an obliterated evidence location, or, (2) a found perpetuated location?

- (g & h) Was the corner reestablished through lost corner proportionate methods? If so, show the method, including the directions and distances to other public land survey corners used as evidence or used for proportioning in determining the corner location?



4" Aspen
N41°E, 10.58 feet

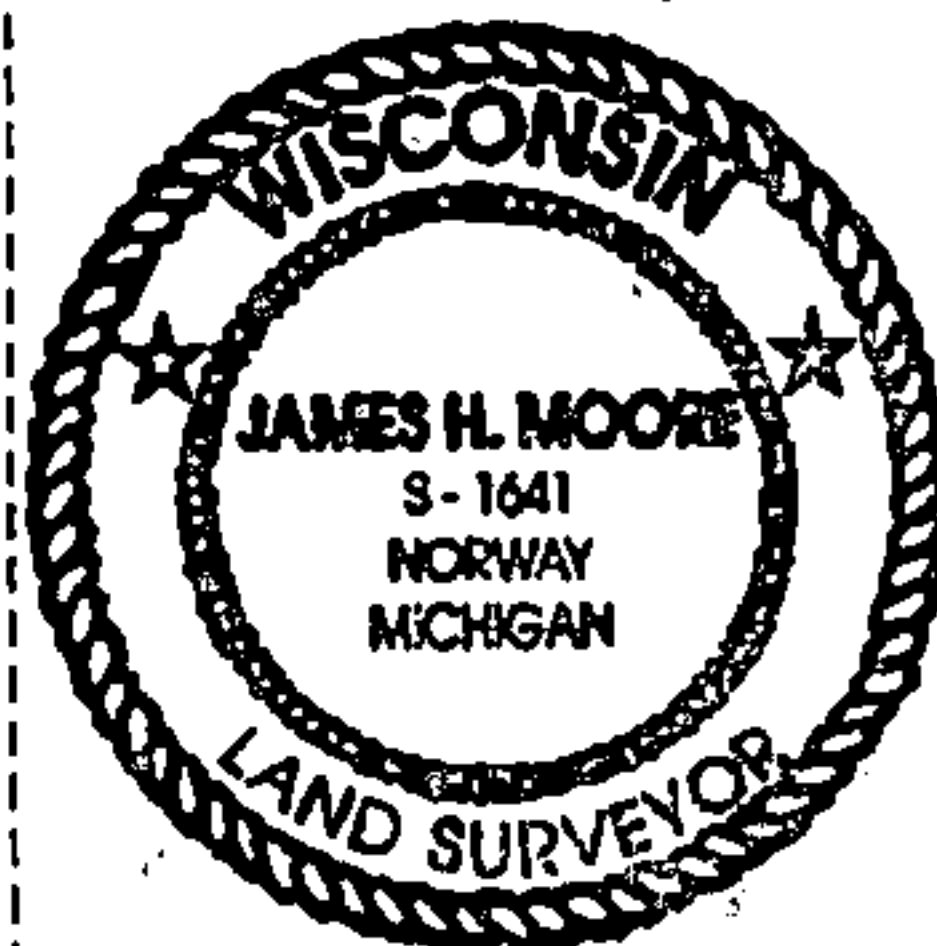
Southwest Section Corner
of Section 10

Steel Sign Post
South 0.57 feet

18" White Pine
S23°E, 16.12 feet

5" Spruce
S38°W, 33.21 feet

Affix Land Surveyor Seal



(1) I, James H. Moore
(type or print name) certify that the corner location shown on this record was determined by me or under my direction and control and that this U.S. Public Land Survey Monument Record is correct and complete to the best of my knowledge and belief.

Signature

January 6, 1997

Date _____

CERTIFICATE READY FOR FILING:

District Ranger

Stock No. 26273

DOCUMENT NUMBER

145356

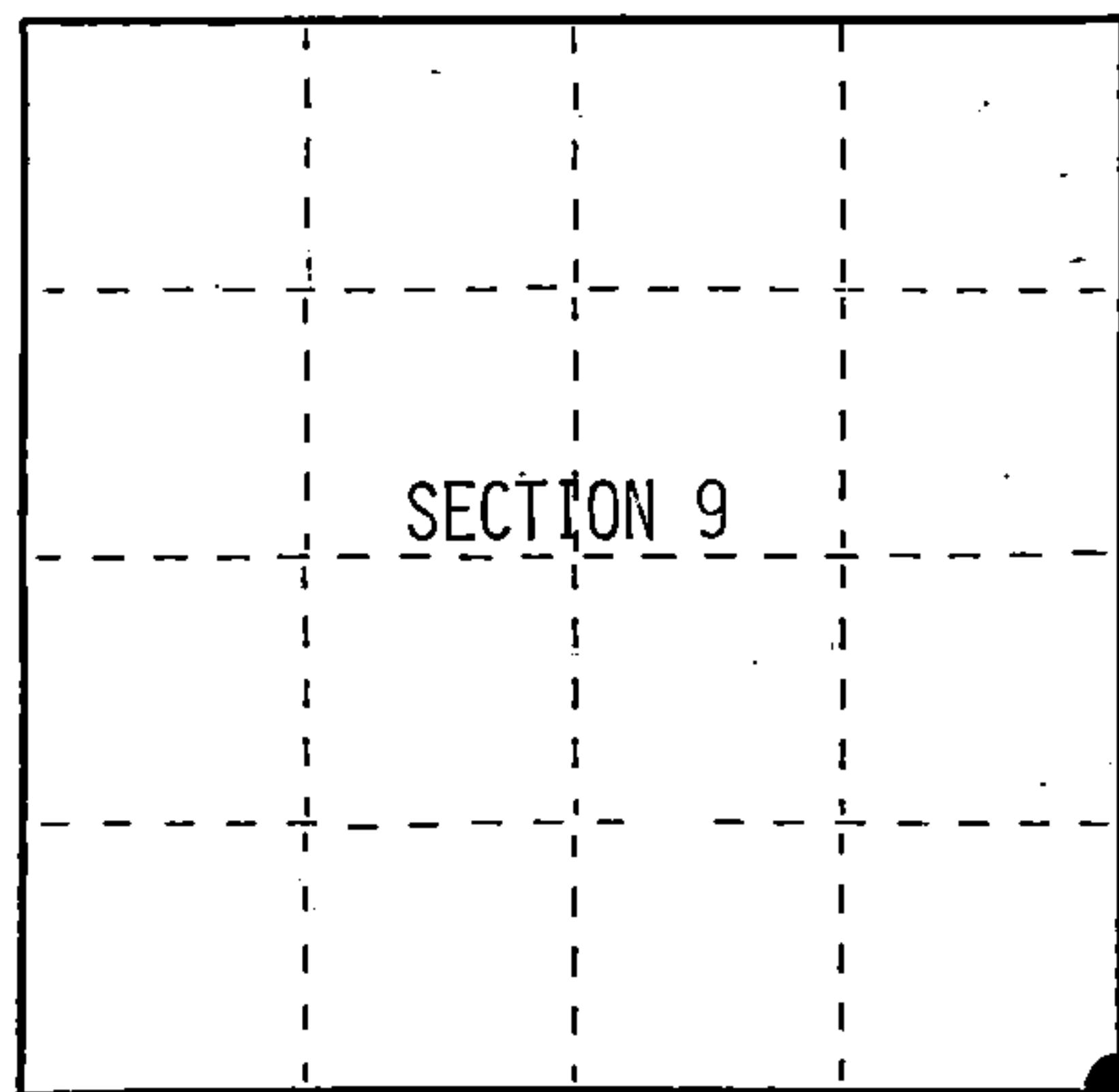
U.S. PUBLIC LAND SURVEY MONUMENT RECORD

Index No. J-13

State of Wisconsin }
 County of Forest } ss.

I, William B. Cochrane, do hereby
 certify that on the 9th day
 of September, 1991, I found
 evidence of the Southeast Section
 corner of Section 9
 Township 40, North, Range
13 East, Fourth Principal Meridian,
 as described hereon; and that from this evidence
 I established a new monument and accessories
 as described hereon to perpetuate the original
 location of this corner.

Resident witnesses:



○ = Corner monument restored.

History of original corner establishment:

Original Government Survey in 1865 by William E. Daugherty.

Dependent Resurvey in 1975 by Barry Krebs. In place of old scribed post,
 set an iron post, 2½ feet long, 2½ inches in diameter, with a brass cap marked;
 T40N R13E, S9, S10, S15, S16, 1975. From which the following bear;

Spruce	6"	N21°E	46½ lks.
W. Pine	9"	S26°E	24½ lks.
Balsam	6"	S79°W	68½ lks.
Balsam	5"	N64°30'W	31½ lks.

Description of corner evidence found:

Found monument as described and in place, from which the following bear;

Spruce-Dead	6"	N21°E	46½ lks.
W. Pine	14"	S26°E	24 lks. (15.84 feet)

Description of monument and accessories I established to perpetuate the original location of this corner.

Blaze and scribed a new bearing tree;

Aspen	3"	N58°E	10.63 feet
-------	----	-------	------------

Re-painted W. Pine bearing tree.

Dated at Hiles, Wis., this 18th day of February, 1992

Signature William B. Cochrane Title Land Surveyor Registration No. S-1107
 (County Surveyor, Registered Land Surveyor, or other duly authorized official)

Office of Register of Deeds, County of Forest, I hereby certify that the within
 instrument was filed in this office for record on the 31st day of August, 1992
 at 10:15 o'clock A. M.

Paul Schenckner
 (Register of Deeds)

By _____ Deputy

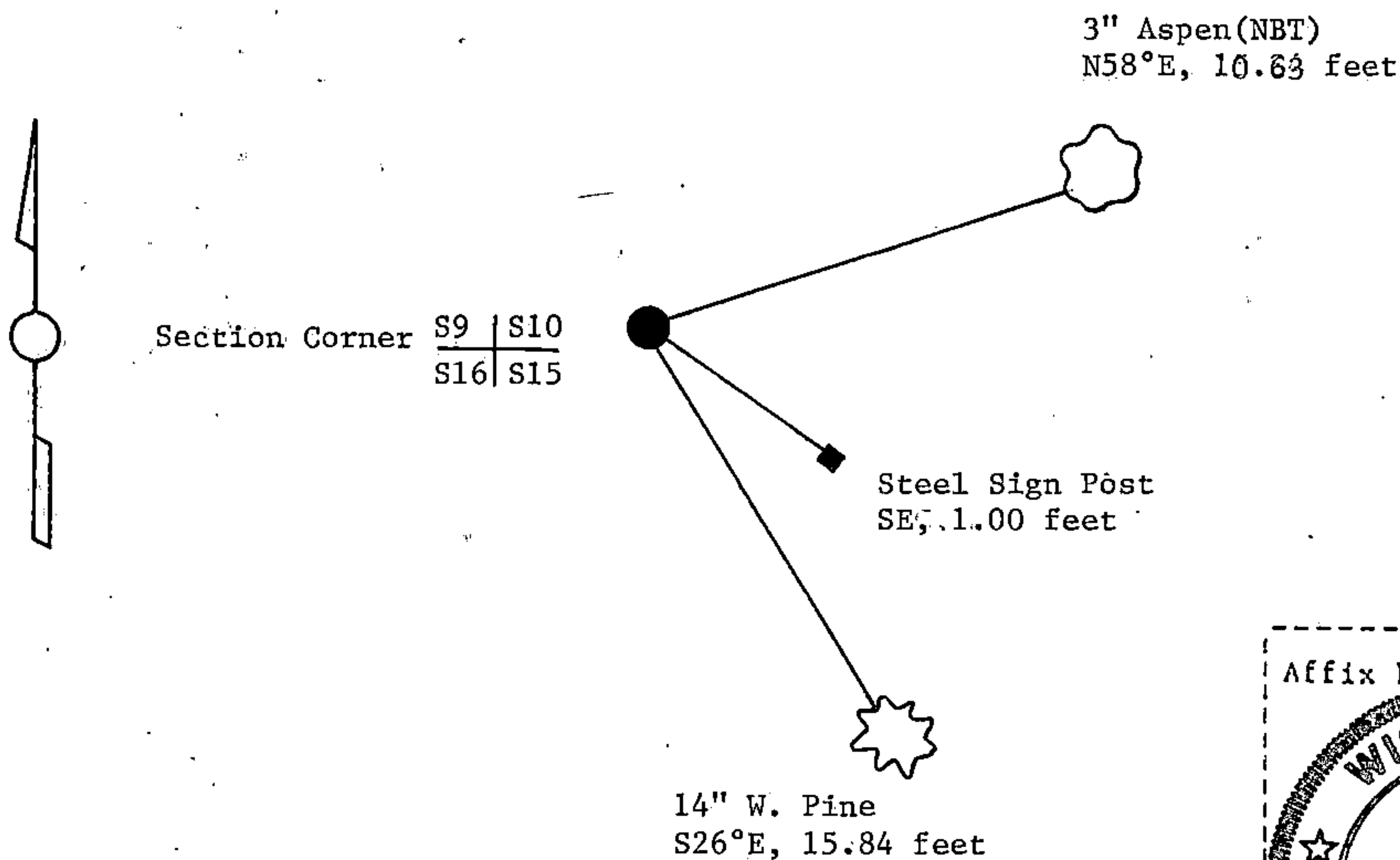
44013090000

(e) Describe any material discrepancy between the location of the corner as restored or reestablished and the location of that corner as previously restored or reestablished by distance and direction. Show the discrepancy on the plan view drawing under (d), above. Show the distances between the corner as previously restored or reestablished and (1) the corner as restored or reestablished, and (2) to at least 2 of the witness monuments shown on the drawing in (d), above.

(f) Was the corner restored through acceptance of (1) an obliterated evidence location, or, (2) a found perpetuated location?

Restored through acceptance of a found perpetuated location.

(g&h) Was the corner reestablished through lost corner proportionate methods? If so, show the method, including the directions and distances to other public land survey corners used as evidence or used for proportioning in determining the corner location?



(i) a. William B. Cochrane
(type or print name) certify that the corner location shown on this record was determined by me or under my direction and control and that this U.S. Public Land Survey Monument Record is correct and complete to the best of my knowledge and belief.



William B. Cochrane March 25, 1992
Signature Date

Survey requested by; Sam Gordon 3/23/92
District Ranger Date