

Stock No. 26273

DOCUMENT NUMBER

145370

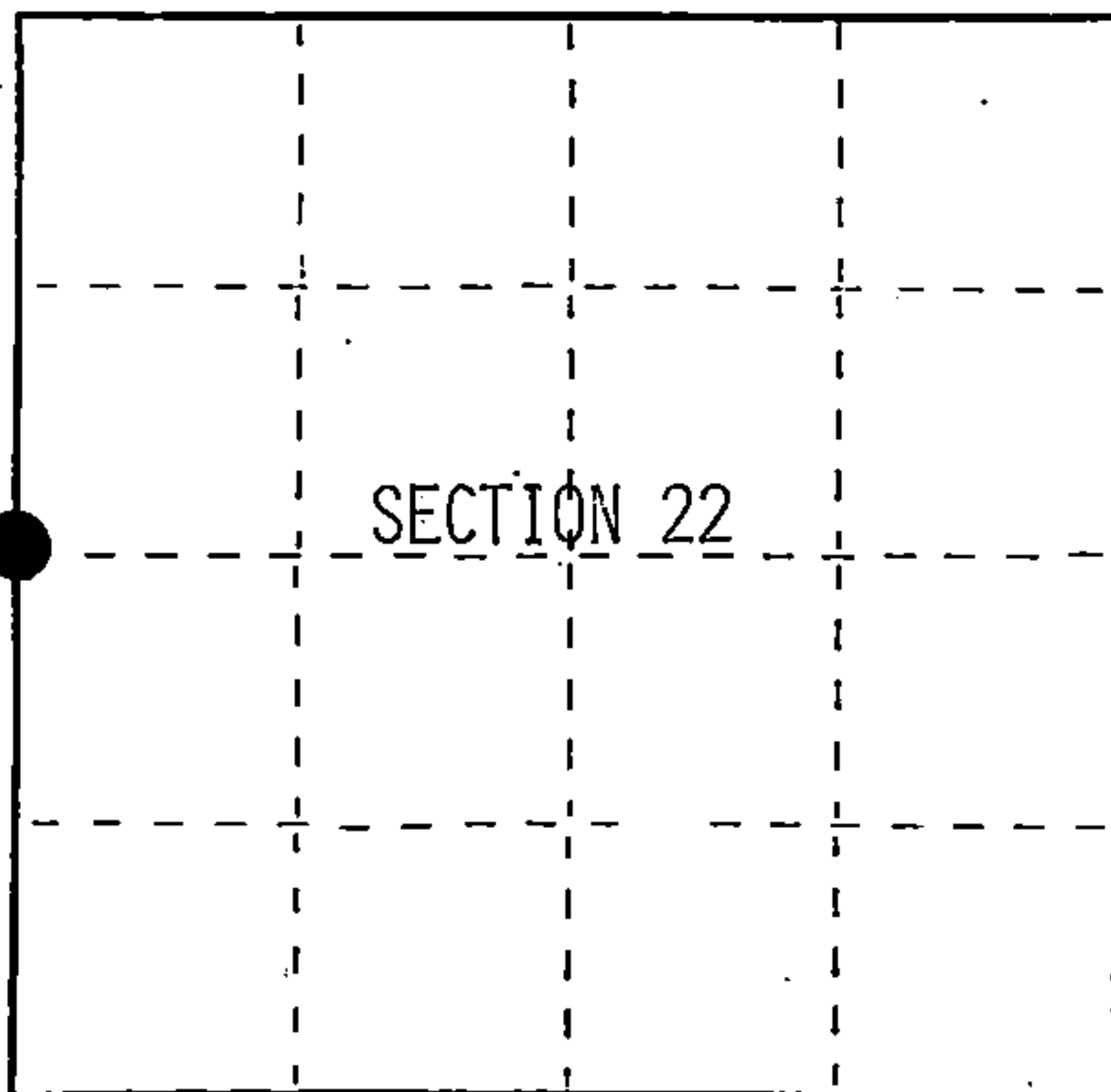
U.S. PUBLIC LAND SURVEY MONUMENT RECORD

Index No. P-13

State of Wisconsin }
County of Forest } ss.

I, William B. Cochrane, do hereby
certify that on the 7th day
of May, 1991, I found
evidence of the West Quarter
corner of Section 22
Township 40, North, Range
13 East, Fourth Principal Meridian,
as described hereon; and that from this evidence
I established a new monument and accessories
as described hereon to perpetuate the original
location of this corner.

Resident witnesses:



○ = Corner monument restored.

History of original corner establishment:

Original Government Survey in 1865 by William E. Daugherty. North between Sections
21 and 22, at 40.00 chains, set Quarter Section Post, from which the following bear;
Hemlock 8" S61°W 18 lks.
Sugar 15" N62°E 3 lks.

On 9-11-64, Jean Resvick found a 1½ inch diameter well pipe and non-original
scribed bearing tree evidence.

Description of corner evidence found:

Found 1½ inch diameter well pipe as described above.

I accept the well pipe as the best available evidence for restoring the corner position.

Description of monument and accessories I established to perpetuate the original location of this corner.

In place of pipe, set a 2½ inch diameter aluminum pipe monument, 3 feet long,
2½ feet in the ground, with an aluminum cap stamped; T40N R13E, 1/4, S21, S22,
1991, S-1107. From which the following new blazed and scribed bearing trees bear;
Maple 6" S34°W 18.88 feet
Maple 6" N63°W 10.72 feet
Set- Steel Sign Post NW 0.50 feet

Dated at Hiles, Wis., this 18th day of February, 1992

Signature William B. Cochrane Title Land Surveyor Registration No. S-1107
(County Surveyor, Registered Land Surveyor, or other duly authorized official)

Office of Register of Deeds, County of Forest, I hereby certify that the within
instrument was filed in this office for record on the 31st day of August, 1992
at 10:15 o'clock A. M.

Paul Achensbrenner
(Register of Deeds)

By _____ Deputy

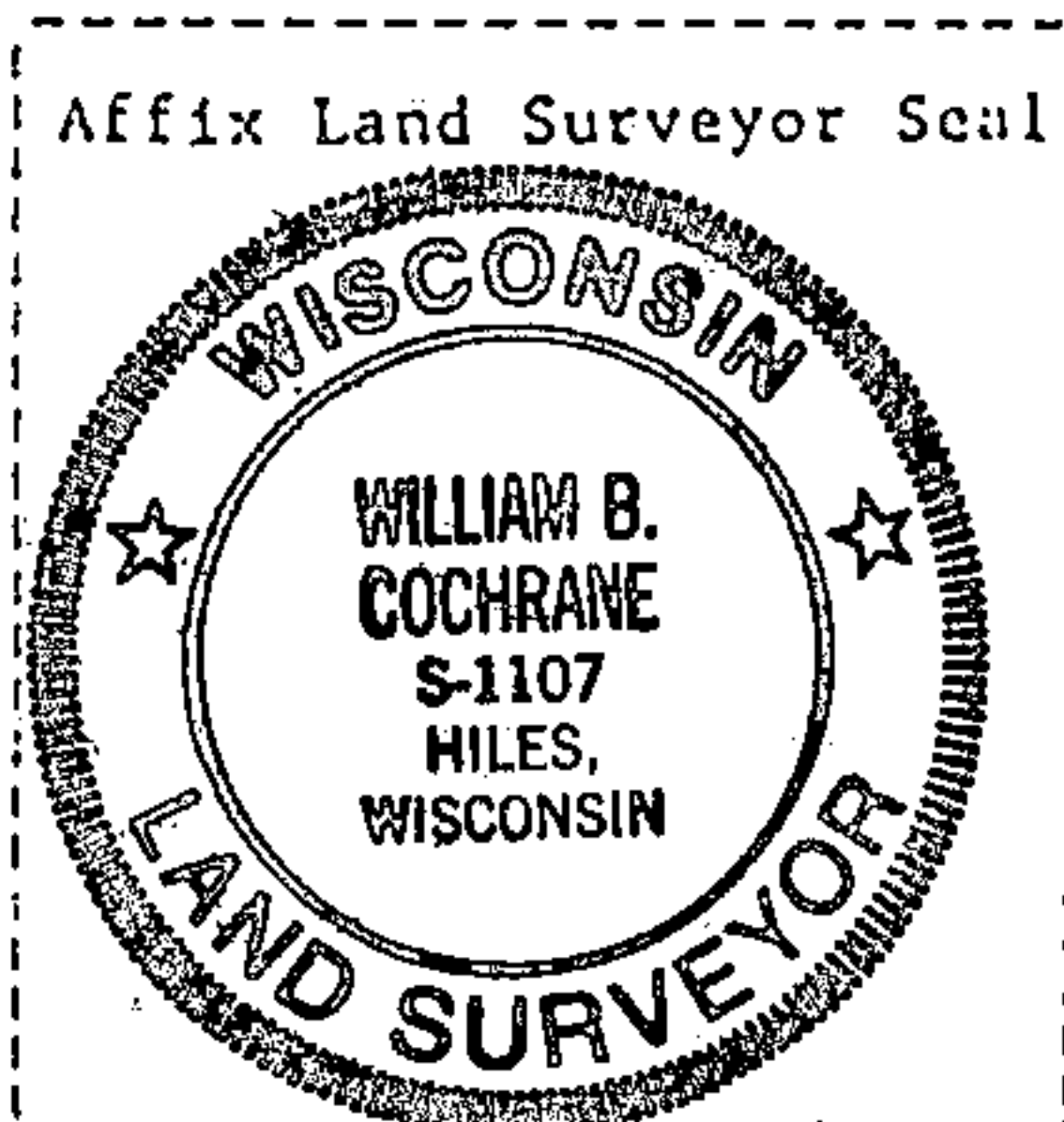
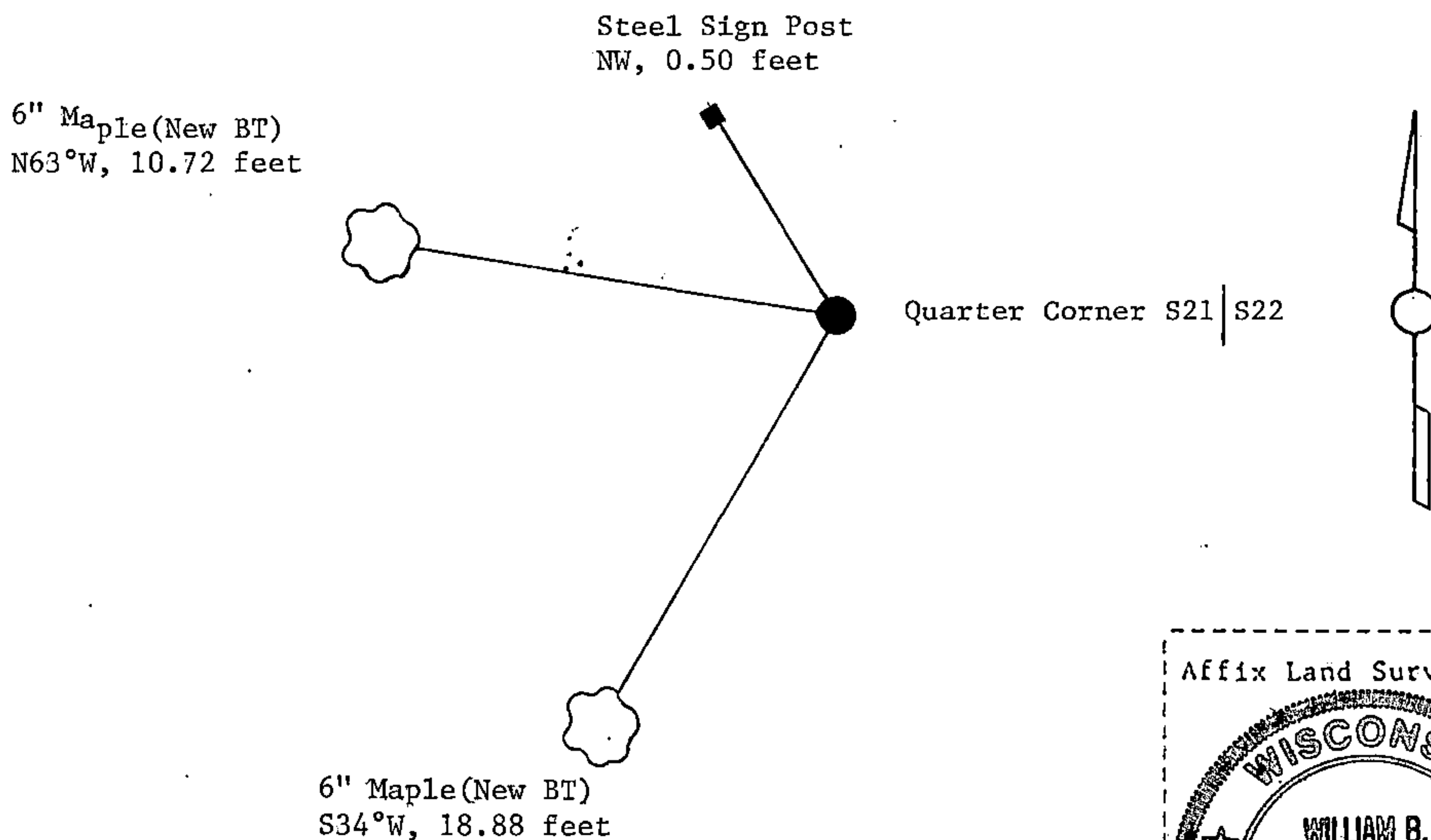
44013212060

(e) Describe any material discrepancy between the location of the corner as restored or reestablished and the location of that corner, as previously restored or reestablished by distance and direction. Show the discrepancy on the plan view drawing under (d), above. Show the distances between the corner as previously restored or reestablished and (1) the corner as restored or reestablished, and (2) to at least 2 of the witness monuments shown on the drawing in (d), above.

(f) Was the corner restored through acceptance of (1) an obliterated evidence location, or, (2) a found perpetuated location?

Restored from accepted evidence.

(g&h) Was the corner reestablished through lost corner proportionate methods? If so, show the method, including the directions and distances to other public land survey corners used as evidence or used for proportioning in determining the corner location?



(i) I, William B. Cochrane
(type or print name) certify that the corner location shown on this record was determined by me or under my direction and control and that this U.S. Public Land Survey Monument Record is correct and complete to the best of my knowledge and belief.

William B. Cochrane March 25, 1992
Signature Date

Survey requested by: Pam Gardner 3/23/92
District Ranger Date