

CERTIFIED LAND CORNER RESTORATION

State of Wisconsin

County of Forest

} ss.

I, Jean F. Resvick, do hereby certify that on the 16th day of November, 1966, I found evidence of the Northeast section corner of Section 1 Township 40 North, Range 14 East, Fourth Principal Meridian, as described hereon; and that from this evidence I established a new monument and accessories as described hereon to perpetuate the original location of this corner:

Description of original monument and accessories and subsequent restorations:

Original survey in 1858.

Dependent resurvey in 1944, 1945 and 1950 by Hugh B. Crawford.

Set a concrete monument, 24 ins. long, 6 ins. diam., 18 ins. in the ground, with an iron post, 23 ins. long, 1 in. diam., embedded in center, with brass cap marked:

T41N R15E
S31
S1 S6
R14E R15E
T40N
CC
1945

from which the following bearing trees bear:

Jack pine 2, S58°30'E, 62½ lks.

Poplar 10, S72°15'W, 155 lks.

Standard corner section 32 and 32,

T41N, R15E, bears N89°49'E, 44.73 chs.

Description of corner evidence found:

6 inch concrete monument with brass cap marked as described above.

Jack pine 8", S58°30'E, 41.25 ft.

Poplar stump scribed, S72°15'W, 102.3 ft.

Description of ~~monument and~~ accessories I established to perpetuate the ~~original~~ location of this corner:

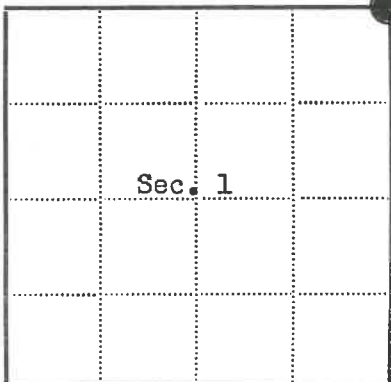
Blazed and scribed the following new bearing trees:

Red pine 5 ins., S33°W, 8.60 ft. or 13.03 lks.

Red pine 6 ins., S72°30'W, 25.65 ft. or 38.86 lks.



440/40/4000



● = Corner monument restored

□ =

Resident witnesses.....

Dated at Rhinelanders, Wisconsin, this 21st day of March, 1967.Signature Jean F. Resvick Title Cadastral Surveyor
(County Surveyor, Registered Land Surveyor, or other duly authorized official)Surveyors Registration No. S-802 DOC. NO. 94236Office of Register of Deeds County of ForestI hereby certify that the within instrument was filed in this office for record on the 27th day of February, 1968, and was filed in Book No. I Page No. 1 of County Records.Signature Eugene Stetiny Title Register of DeedsTownship 40 North, Range 14 East, Section 1, Index No. A-25, Page No. 1

A 25

U.S. PUBLIC LAND SURVEY MONUMENT RECORD

Index No. A-25

State of Wisconsin }
County of Forest } ss.

I, William B. Cochrane, do hereby
certify that on the 29th day
of July, 1986 I found
evidence of the Closing Northeast Section
corner of Section 1
Township 40, North, Range
14 East, Fourth Principal Meridian,
as described hereon; and that from this evidence
I established a new monument and accessories
as described hereon to perpetuate the original
location of this corner.

Resident witnesses:

David Brownell

Tony Tillman

History of original corner establishment:

Original Government Survey in 1858 by Artemas Curtis. Dependent Resurvey in 1945 by
Hugh B. Crawford. North between Sections 1 and 6, 38.55 chains, intersect Fourth
Standard Paralell North. Set a concrete monument, 2 feet long, 6 inches dia., 18 inches
in the ground, with an iron post in center, and a brass cap mkd; T41N, R15E, S31, S1, S6,
R14E, R15E, T40N, CC, 1945. From which the following bear;

J. Pine	2"	S58°30'E	62½ lks. (41.25 feet)
Poplar	10"	S72°15'W	155 lks. (102.30 feet)

In 1966, Jean Resvick, a Land Surveyor with the U.S. Forest Service, blazed and scribed the
following new bearing trees;

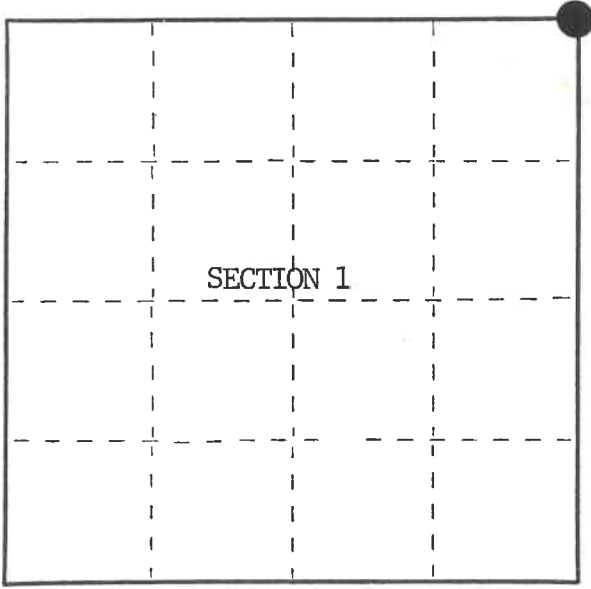
Description of corner evidence found:	R. Pine	5"	S33°W	8.60 feet
	R. Pine	6"	S72°W	25.65 feet
	4"x4" Wood Sign Post	SW		2.00 feet

Found monument as described and in place, from which the following bear;

J. Pine	10"	S58°30'E	41.25 feet
R. Pine	7"	S33°00'W	8.60 feet
R. Pine	10"	S72°00'W	25.65 feet
Wood Sign Post		SW	2.00 feet

Description of monument and accessories I established to perpetuate the original location of this corner.

None



○ = Corner monument restored.

Dated at Hiles, Wis., this 8th day of October, 1986

Signature William B. Cochrane Title Land Surveyor Registration No. S-1107
(County Surveyor, Registered Land Surveyor, or other duly authorized official)

Office of Register of Deeds, County of Forest, I hereby certify that the within
instrument was filed in this office for record on the 11th day of March, 1987
at 3:30 o'clock P. M.

Paul Aschenbrenner
(Register of Deeds)

By Deputy

FORM NO. 985-A

H.C. Miller Company

Stock No. 26273

DOCUMENT NUMBER 132434

44014014000

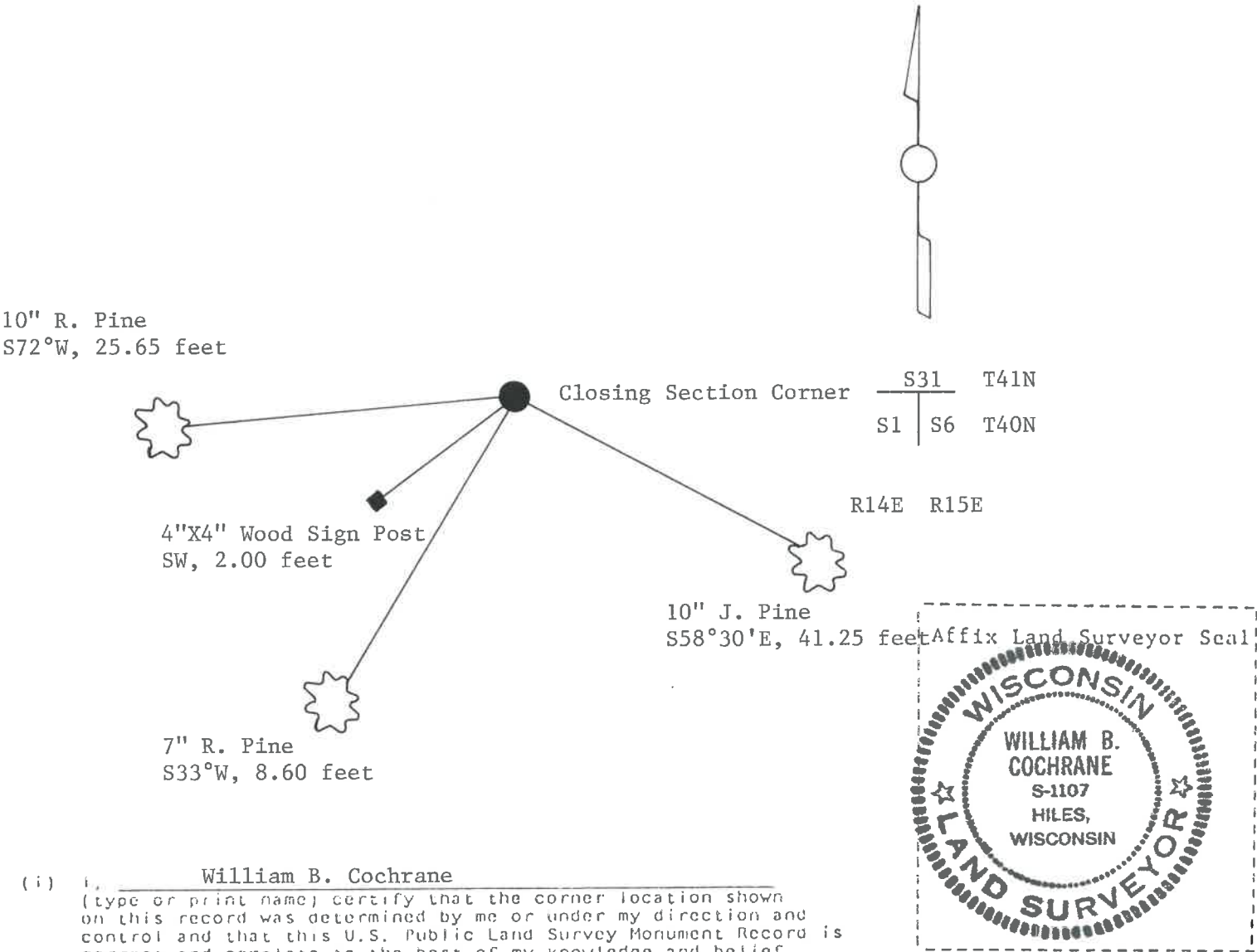
(e) Describe any material discrepancy between the location of the corner as restored or reestablished and the location of that corner as previously restored or reestablished by distance and direction. Show the discrepancy on the plan view drawing under (d), above. Show the distances between the corner as previously restored or reestablished and (1) the corner as restored or reestablished, and (2) to at least 2 of the witness monuments shown on the drawing in (d), above.

See drawing below.

(f) Was the corner restored through acceptance of (1) an obliterated evidence location, or, (2) a found perpetuated location?

Restored through acceptance of a found perpetuated location.

(g&h) Was the corner reestablished through lost corner proportionate methods? If so, show the method, including the directions and distances to other public land survey corners used as evidence or used for proportioning in determining the corner location?



(i) I, William B. Cochrane
(type or print name) certify that the corner location shown on this record was determined by me or under my direction and control and that this U.S. Public Land Survey Monument Record is correct and complete to the best of my knowledge and belief.

William B. Cochrane October 14, 1986
Signature Date

Certificate ready for filing: [Signature] 3-9-87
District Ranger Date

U.S. PUBLIC LAND SURVEY MONUMENT RECORD

Index No. A-1

State of Wisconsin }
County of Florence } ss.

I, William B. Cochrane, do hereby
certify that on the 29th day
of July, 19 86, I found
evidence of the Closing Northwest Section
corner of Section 6
Township 40 North, Range
15 East, Fourth Principal Meridian,
as described hereon; and that from this evidence
I established a new monument and accessories
as described hereon to perpetuate the original
location of this corner.

Resident witnesses:

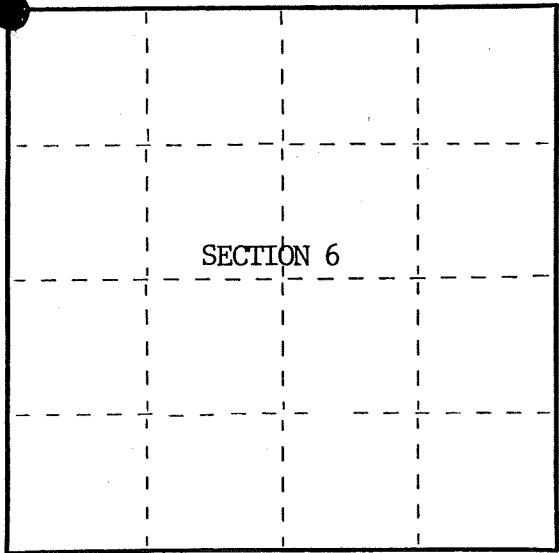
David Brownell
Tony Tillman

History of original corner establishment:
Original Government Survey in 1858 by Artemas Curtis. Dependent Resurvey in 1945 by
Hugh B. Crawford. North between Sections 1 and 6, 38.55 chains, intersect Fourth
Standard Paralell North. Set a concrete monument, 2 feet long, 6 inches dia., 18 inches
in the ground, with an iron post in center, and a brass cap mkd; T41N R15E, S31, S1, S6,
R14E, R15E, T40N, CC, 1945. From which the following bear;
J. Pine 2" S58°30'E 62½ lks. (41.25 feet)
Poplar 10" S72°15'W 155 lks. (102.30 feet)
In 1966, Jean Resvick, a Land Surveyor with the U.S. Forest Service, blazed and scribed
the following new bearing trees; R. Pine 5" S33°W 8.60 feet
Description of corner evidence found: R. Pine 6" S72°W 25.65 feet
4"x4" Wood Sign Post SW 2.00 feet

Found monument as described and in place, from which the following bear;
J. Pine 10" S58°30'E 41.25 feet
R. Pine 7" S33°00'W 8.60 feet
R. Pine 10" S72°00'W 25.65 feet
4"x4" Wood Sign Post SW 2.00 feet

Description of monument and accessories I established to perpetuate the original location of this corner.

None



○ = Corner monument restored.

Dated at Hiles, Wis., this 8th day of October, 19 86
Signature William B. Cochrane Title Land Surveyor Registration No. S-1107
(County Surveyor, Registered Land Surveyor, or other duly authorized official)
Office of Register of Deeds, County of _____, I hereby certify that the within
instrument was filed in this office for record on the _____ day of _____, 19____
at _____ o'clock _____ M.

(Register of Deeds)
By _____ Deputy

FORM NO. 985-A
H.C. Miller Company
Stock No. 26273

- (e) Describe any material discrepancy between the location of the corner as restored or reestablished and the location of that corner as previously restored or reestablished by distance and direction. Show the discrepancy on the plan view drawing under (d), above. Show the distances between the corner as previously restored or reestablished and (1) the corner as restored or reestablished, and (2) to at least 2 of the witness monuments shown on the drawing in (d), above.

See drawing below.

- (f) Was the corner restored through acceptance of (1) an obliterated evidence location, or, (2) a found perpetuated location?

Restored through acceptance of a found perpetuated location.

- (g&h) Was the corner reestablished through lost corner proportionate methods? If so, show the method, including the directions and distances to other public land survey corners used as evidence or used for proportioning in determining the corner location?

7" R. Pine
S72°W, 25.65 feet



4"x4" Wood Sign Post
SW, 2.00 feet



7" R. Pine
S33°W, 8.60 feet

Closing Section Corner

S31 T41N
S1 S6 T40N
R14E R15E

10" J. Pine
S58°30'E, 41.25 feet



- (i) I, William B. Cochrane
(type or print name) certify that the corner location shown on this record was determined by me or under my direction and control and that this U.S. Public Land Survey Monument Record is correct and complete to the best of my knowledge and belief.

William B. Cochrane
Signature

October 14, 1986
Date

Certificate ready for filing:

[Signature]
District Ranger

3-9-87
Date

