

U.S. PUBLIC LAND SURVEY MONUMENT RECORD

Index No. A-23

State of Wisconsin }
County of Forest } ss.

History of original corner establishment:
None

I, William B. Cochran, do hereby
certify that on the 23rd day
of August, 1984, I found
evidence of the North Closing Quarter
corner of Section 1
Township 40 North, Range
14 East, Fourth Principal Meridian,
as described hereon; and that from this evidence
I established a new monument and accessories
as described hereon to perpetuate the original
location of this corner.

Description of corner evidence found:
None

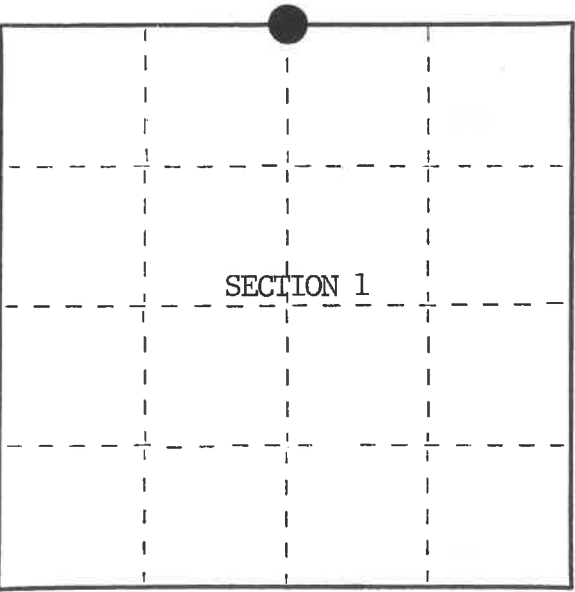
The corner position was re-established at proportionate distance between the Northeast
and Northwest Closing Section Corners of Section 1, and on line between the Standard
Quarter Corner of Section 36 and the Standard Section Corner common to Sections
36 and 31, Ranges 14 and 15 East.

Resident witnesses:
Tony Tillman

Description of monument and accessories I established to perpetuate the original location of this corner.

At the re-established corner position, set a 2½" diameter aluminum pipe monument, 3 feet
long, 2½ feet in the ground, with an aluminum cap stamped; T41N R14E, C1/4C, S1, T40N,
1984, S-1107. From which the following new blazed and scribed bearing trees bear;

Spruce	10"	S69°E	8.93 feet
Spruce	8"	S15°W	13.89 feet
Steel Sign Post		SW	0.50 feet



○ = Corner monument restored.

Dated at Hiles, Wis., this 23rd day of December, 1985

Signature William B. Cochran Title Land Surveyor Registration No. S-1107
(County Surveyor, Registered Land Surveyor, or other duly authorized official)

Office of Register of Deeds, County of Forest, I hereby certify that the within
instrument was filed in this office for record on the 11th day of March, 1987.
at 3:30 o'clock P. M.

Paul Aschenbrenner
(Register of Deeds)

By Deputy

FORM NO. 985-A
H.C. Miller Company
MILWAUKEE, WISCONSIN

Stock No. 26273

DOCUMENT NUMBER 132433

44014014020

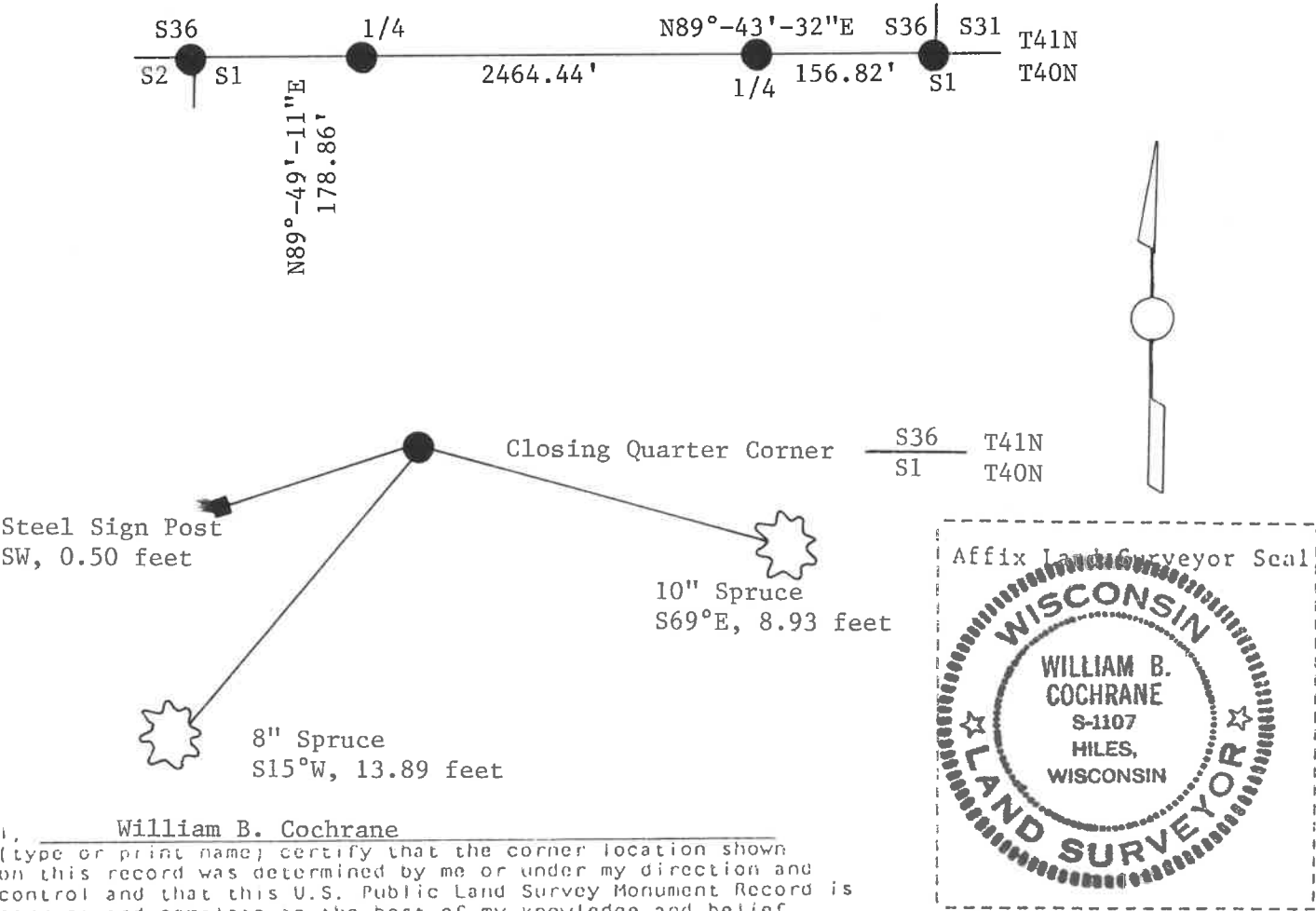
(e) Describe any material discrepancy between the location of the corner as restored or reestablished and the location of that corner as previously restored or reestablished by distance and direction. Show the discrepancy on the plan view drawing under (d), above. Show the distances between the corner as previously restored or reestablished and (1) the corner as restored or reestablished, and (2) to at least 2 of the witness monuments shown on the drawing in (d), above.

See drawing below.

(f) Was the corner restored through acceptance of (1) an obliterated evidence location, or, (2) a found perpetuated location?

(g&h) Was the corner reestablished through lost corner proportionate methods? If so, show the method, including the directions and distances to other public land survey corners used as evidence or used for proportioning in determining the corner location?

Re-established through lost corner proportionate methods.



(i) I, William B. Cochrane
(type or print name) certify that the corner location shown on this record was determined by me or under my direction and control and that this U.S. Public Land Survey Monument Record is correct and complete to the best of my knowledge and belief.

William B. Cochrane October 14, 1986
Signature Date

Certificate ready for filing: [Signature] 3-9-87
District Ranger Date