

Stock No. 26273

DOCUMENT NUMBER 132436

U.S. PUBLIC LAND SURVEY MONUMENT RECORD

Index No. C-5

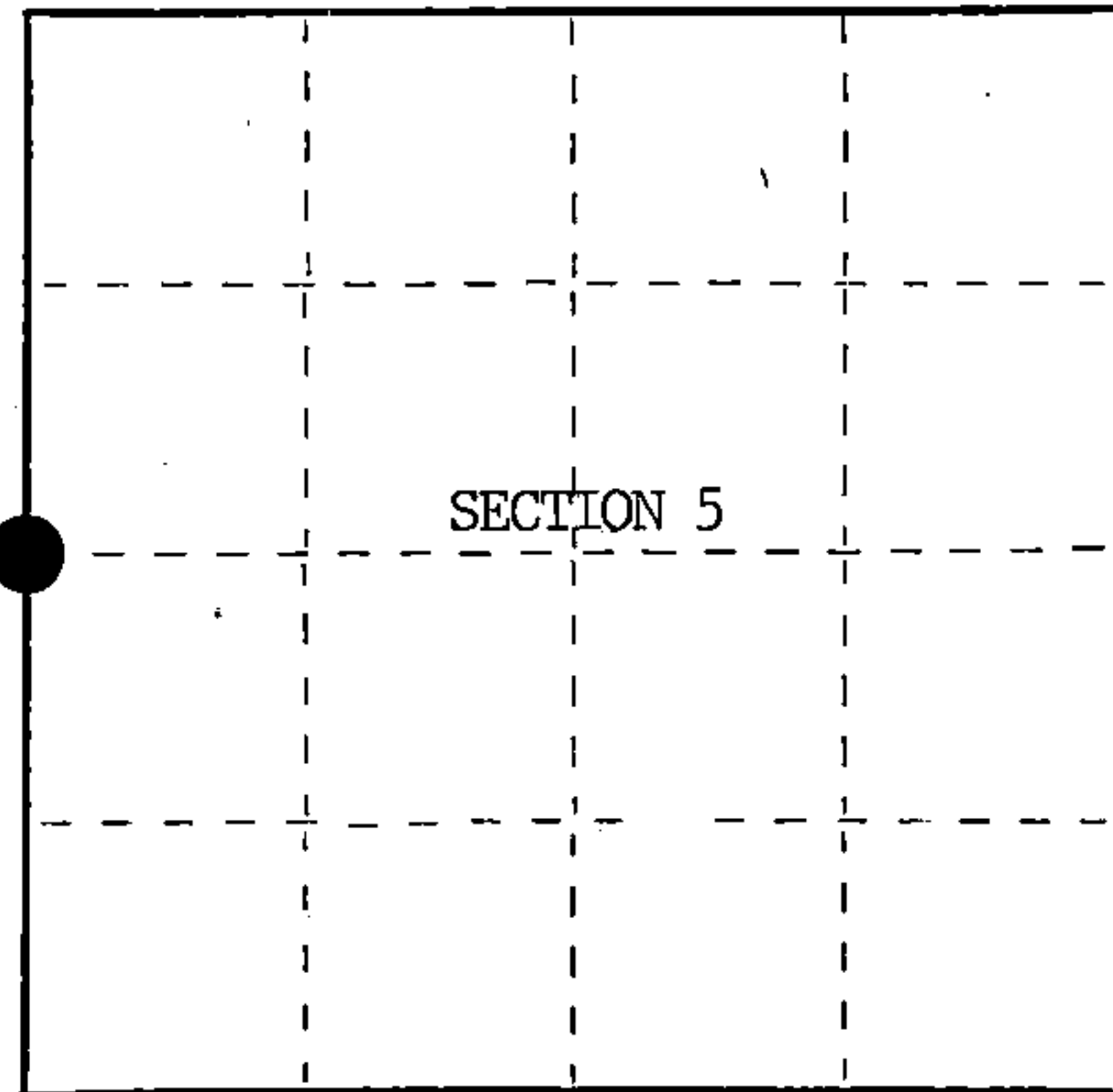
State of Wisconsin }
County of Forest } ss.

I, William B. Cochrane, do hereby
certify that on the 7th day
of May, 1985, I found
evidence of the West Quarter
corner of Section 5
Township 40, North, Range
14 East, Fourth Principal Meridian,
as described hereon; and that from this evidence
I established a new monument and accessories
as described hereon to perpetuate the original
location of this corner.

Resident witnesses:

David Brownell

Tony Tillman



○ = Corner monument restored.

History of original corner establishment:

Original Government Survey in 1865 by William E. Daugherty. North between Sections
5 and 6, 40.00 chains, set Quarter Section Post to Sections 5 and 6, from which
the following bear;

Aspen	6"	S33°E	118 lks.
Aspen	3"	N11°W	234 lks.

Description of corner evidence found:

No corner evidence was recovered.

The corner position was re-established at proportionate distance and on line
between the Northwest and Southwest Section Corners of Section 5.

Description of monument and accessories I established to perpetuate the original location of this corner.
At the re-established corner position set a 2½" diameter aluminum pipe monument,
5 feet long, 4 feet in the ground, with an aluminum cap stamped; T40N R14E, 1/4,
S5, S6, 1985, S-1107. From which the following new blazed and scribed bearing
trees bear;

Cedar	7"	N60°E	12.26 feet
Cedar	10"	S44°E	30.03 feet
Steel Sign Post		SW	1.00 feet

Dated at Hiles, Wis., this 8th day of January, 1986

Signature William B. Cochrane Title Land Surveyor Registration No. S-1107
(County Surveyor, Registered Land Surveyor, or other duly authorized official)

Office of Register of Deeds, County of Forest, I hereby certify that the within
instrument was filed in this office for record on the 11th day of March, 1987
at 3:30 o'clock P. M.

Paul Aschenbrenner
(Register of Deeds)

By _____ Deputy

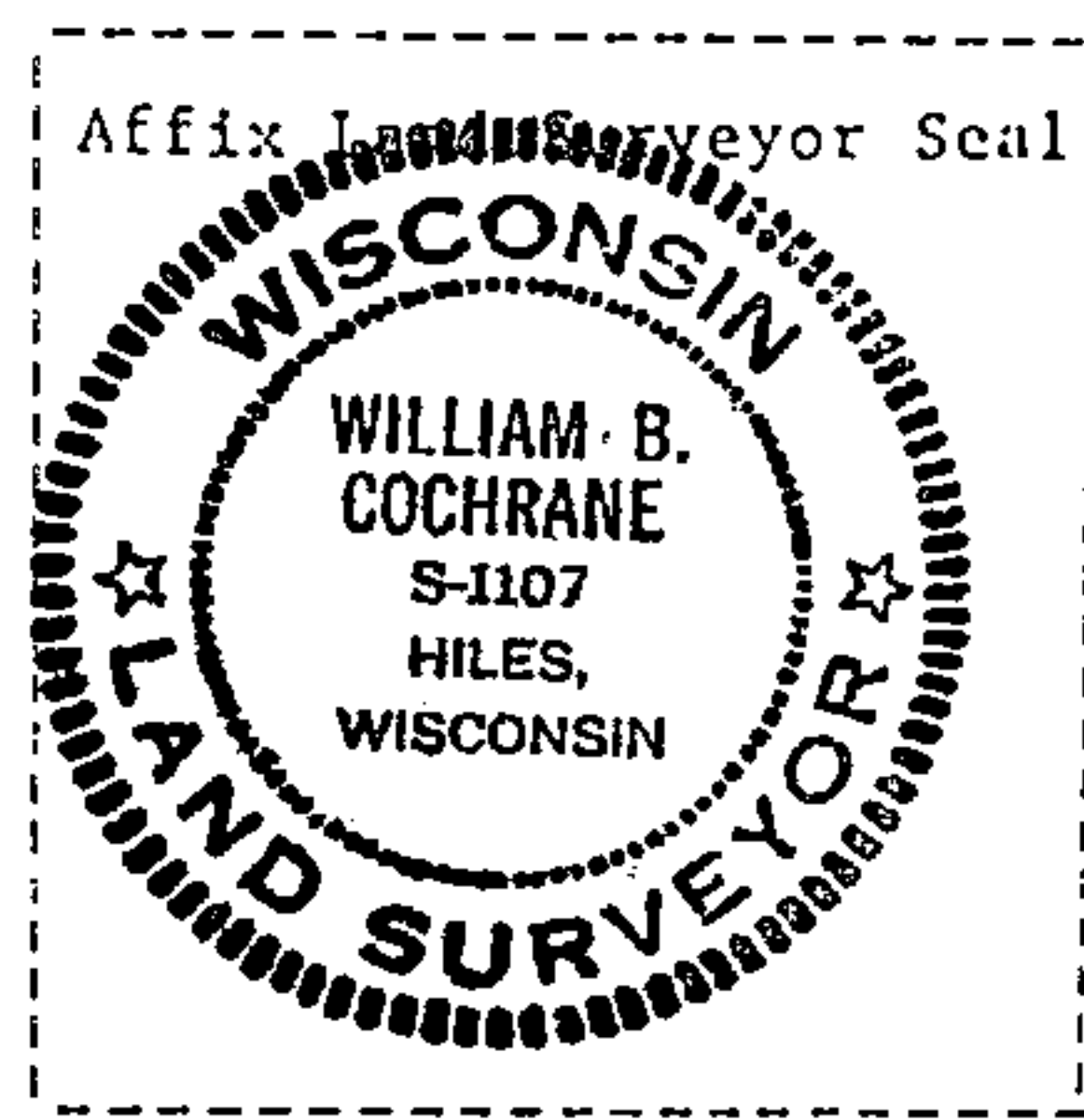
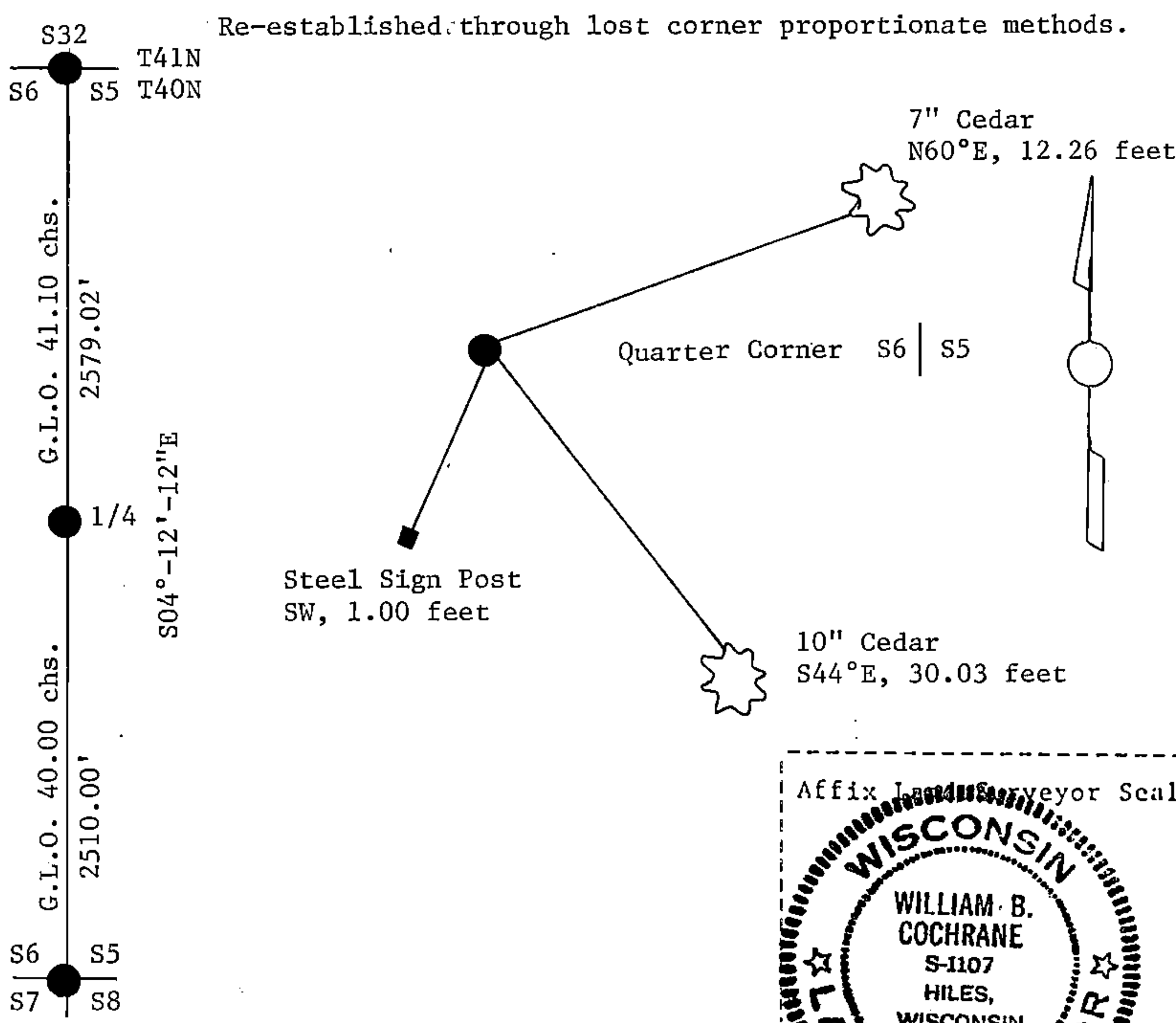
4401406 2000

(e) Describe any material discrepancy between the location of the corner as restored or reestablished and the location of that corner as previously restored or reestablished by distance and direction. Show the discrepancy on the plan view drawing under (d), above. Show the distances between the corner as previously restored or reestablished and (1) the corner as restored or reestablished, and (2) to at least 2 of the witness monuments shown on the drawing in (d), above.

See drawing below.

(f) Was the corner restored through acceptance of (1) an obliterated evidence location, or, (2) a found perpetuated location?

(g&h) Was the corner reestablished through lost corner proportionate methods? If so, show the method, including the directions and distances to other public land survey corners used as evidence or used for proportioning in determining the corner location?



(i) I, William B. Cochrane
(type or print name) certify that the corner location shown on this record was determined by me or under my direction and control and that this U.S. Public Land Survey Monument Record is correct and complete to the best of my knowledge and belief.

William B. Cochrane October 14, 1986
Signature Date

Certificate ready for filing: [Signature] 3-9-87
District Ranger Date