

U.S. PUBLIC LAND SURVEY MONUMENT RECORD

Index No. G-21

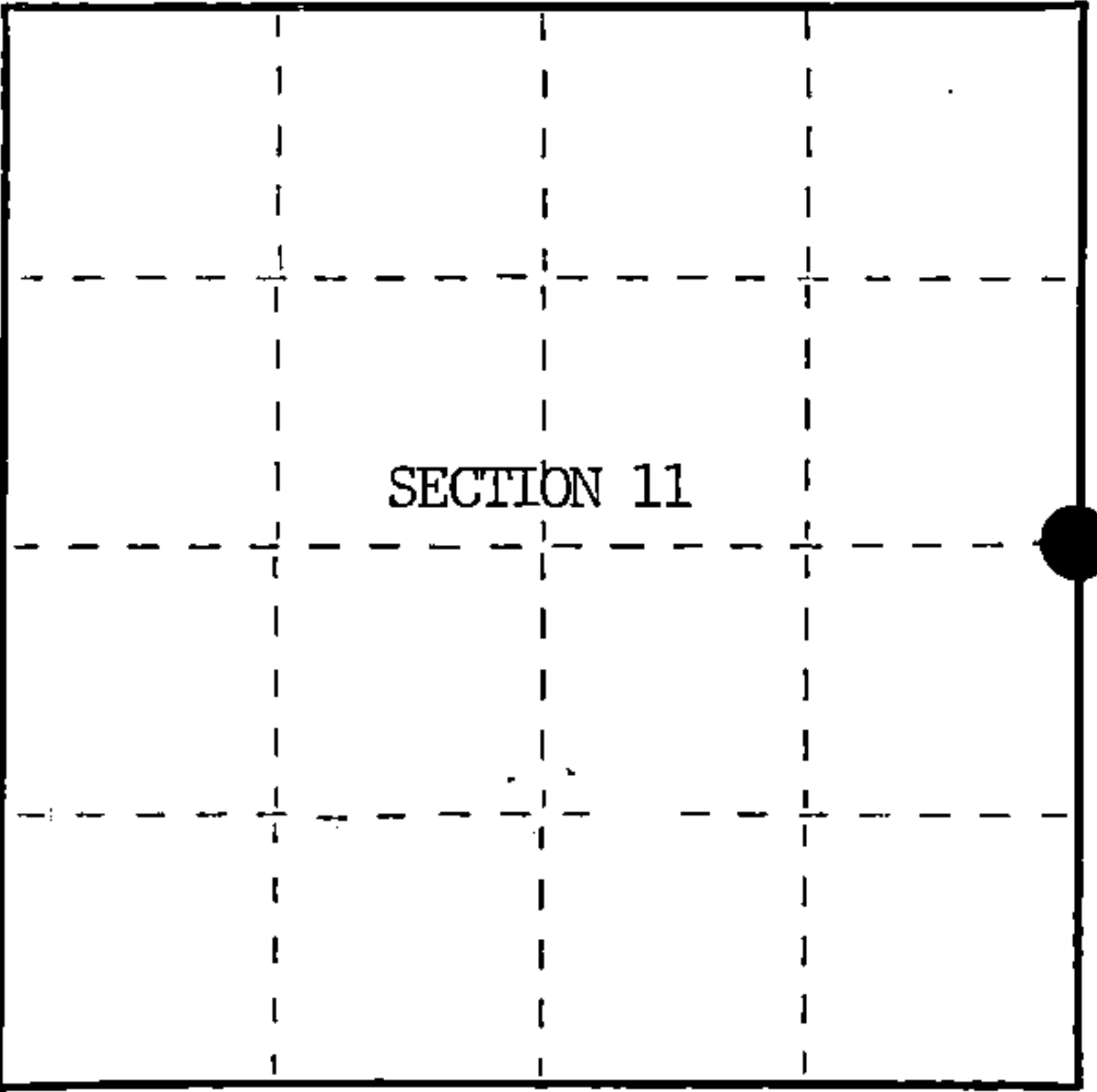
State of Wisconsin }  
County of Forest } ss.

I, William B. Cochrane, do hereby  
certify that on the 29th day  
of July, 1986, I found  
evidence of the East Quarter  
corner of Section 11  
Township 40 North, Range  
14 East, Fourth Principal Meridian,  
as described hereon; and that from this evidence  
I established a new monument and accessories  
as described hereon to perpetuate the original  
location of this corner.

Resident witnesses:

David Brownell

Tony Tillman



○ = Corner monument restored.

History of original corner establishment:

Original Government Survey in 1865 by William E. Daugherty. North between Sections  
11 and 12, 40.00 chains, set Quarter Section Post to Sections 11 and 12, from which  
the following bear;

Fir	8"	N77°E	10 lks.
Birch	10"	S50°W	10 lks.

Description of corner evidence found:

No corner evidence recovered.

The corner position is re-established at proportionate distance and on  
line between the Northeast and Southeast Section Corners of Section 11.

Description of monument and accessories I established to perpetuate the original location of this corner.

At the corner position, set a 2½ inch diameter aluminum pipe monument, 3 feet  
long, 2½ feet in the ground, with an aluminum cap stamped; T40N R14E, 1/4, S11,  
S12, 1986, S-1107. From which the following new blazed and scribed bearing trees bear;

Aspen	8"	N22°E	3.03 feet
Aspen	15"	S56°E	20.20 feet
Steel Sign Post		West	1.00 feet

Dated at Hiles, Wis., this 12th day of October, 1986

Signature: William B. Cochrane Title: Land Surveyor Registration No. S-1107  
(County Surveyor, Registered Land Surveyor, or other duly authorized official)

Office of Register of Deeds, County of Forest, I hereby certify that the within  
instrument was filed in this office for record on the 11th day of March, 1987  
at 3:30 o'clock P. M.

Paul Achenbrenner  
(Register of Deeds)

By Deputy

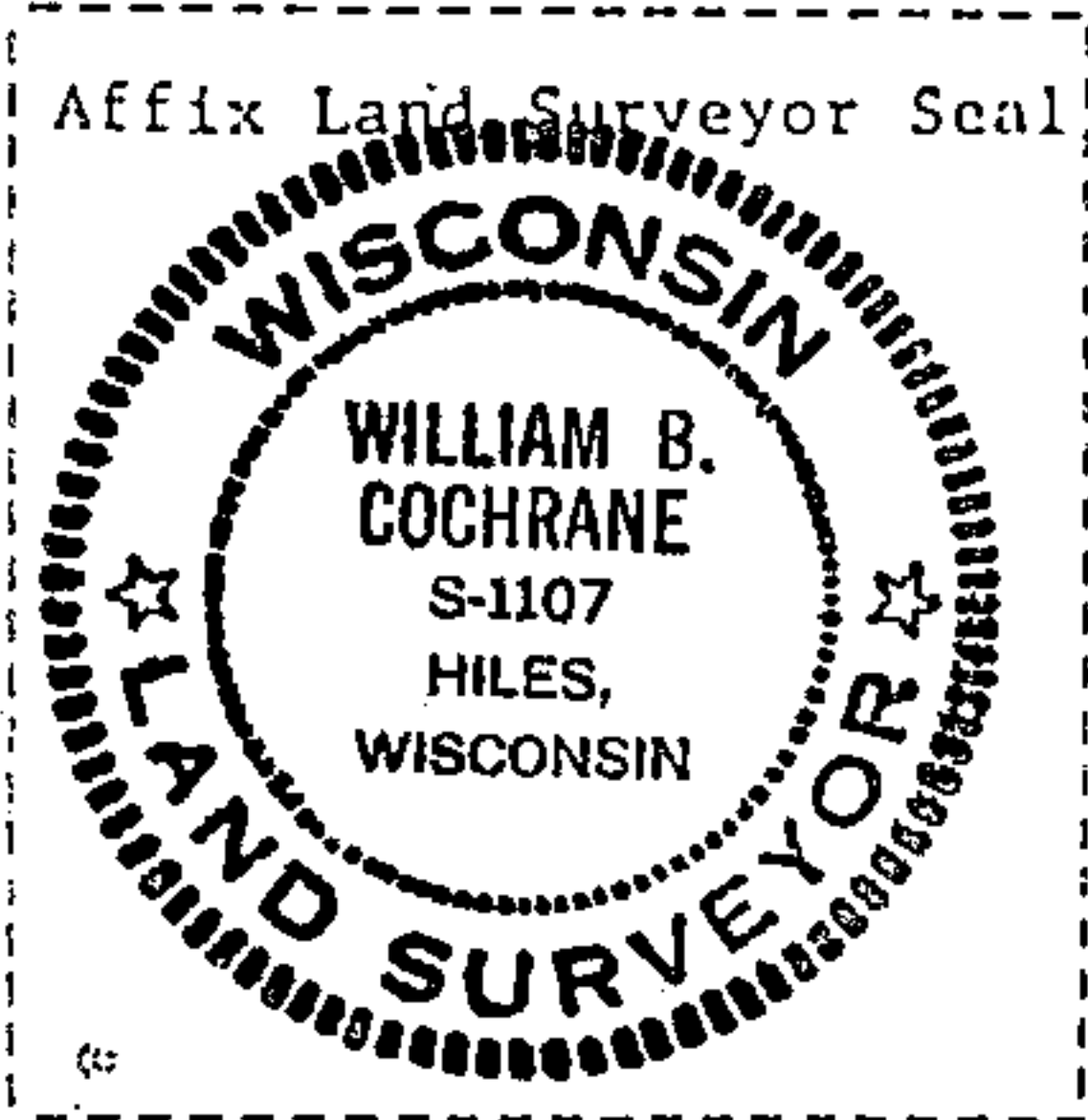
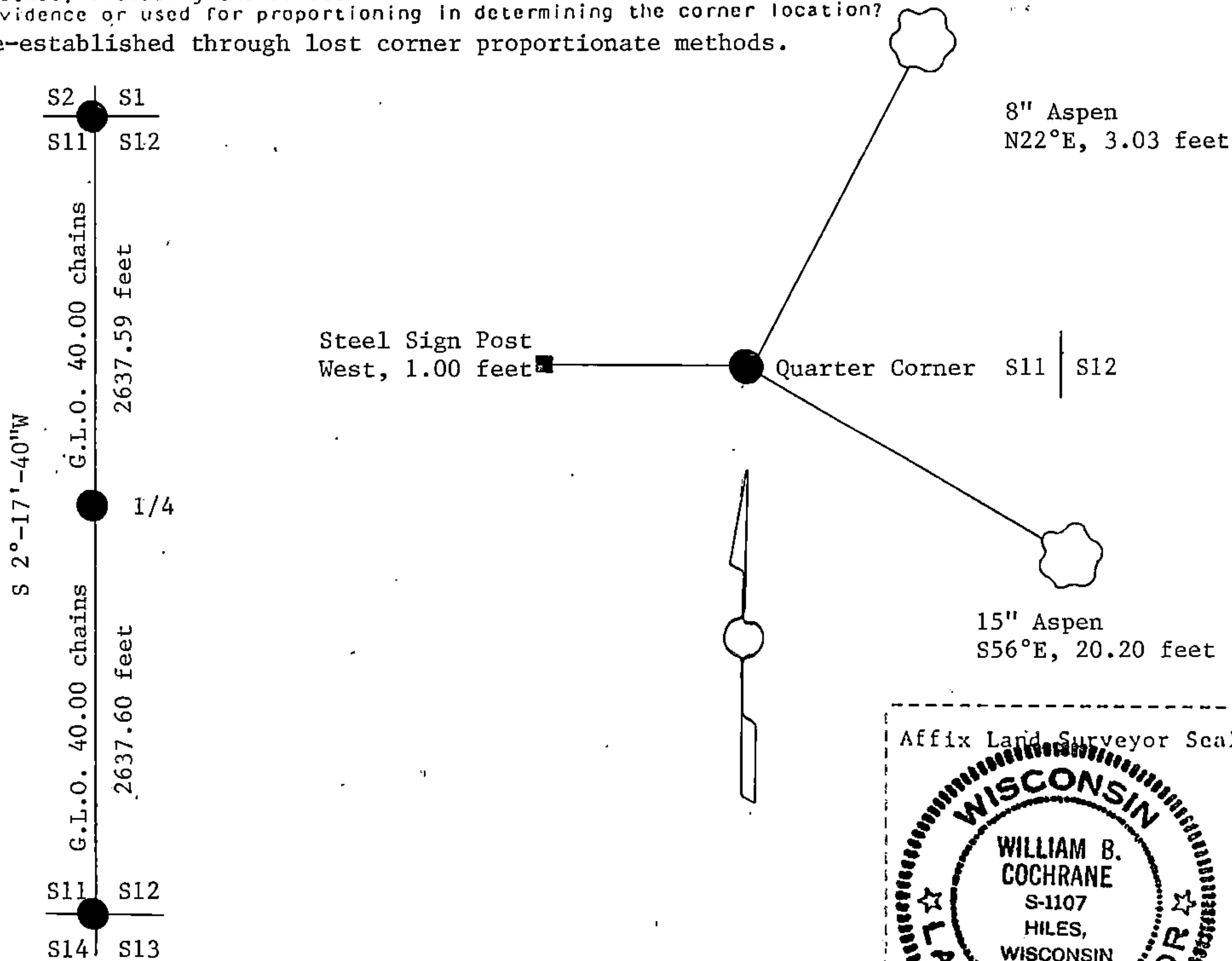
44014112000

(e) Describe any material discrepancy between the location of the corner as restored or reestablished and the location of that corner as previously restored or reestablished by distance and direction. Show the discrepancy on the plan view drawing under (d), above. Show the distances between the corner as previously restored or reestablished and (1) the corner as restored or reestablished, and (2) to at least 2 of the witness monuments shown on the drawing in (d), above.

See drawing below.

(f) Was the corner restored through acceptance of (1) an obliterated evidence location, or, (2) a found perpetuated location?

(g&h) Was the corner reestablished through lost corner proportionate methods? If so, show the method, including the directions and distances to other public land survey corners used as evidence or used for proportioning in determining the corner location?  
Re-established through lost corner proportionate methods.



(i) I, William B. Cochrane  
(type or print name) certify that the corner location shown on this record was determined by me or under my direction and control and that this U.S. Public Land Survey Monument Record is correct and complete to the best of my knowledge and belief.

William B. Cochrane October 14, 1986  
Signature Date

Certificate ready for filing: [Signature] 3-9-87  
District Ranger Date