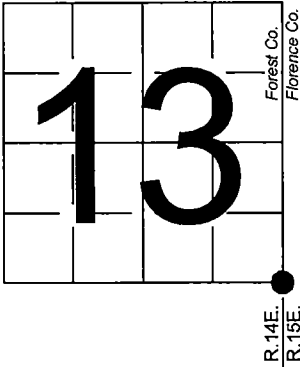


U. S. PUBLIC LAND SURVEY MONUMENT RECORD

NOTE: This form is intended and designed to fulfill all requirements of Wisconsin Administrative Code, Chapter A-E 7.08 U.S. Public Land Survey Monument Record (3) (a-i)

A-E 7.08(3)(a) Identity of corner:  
Southeast Corner Section 13,  
Township 40 North, Range 14 East  
of the Fourth Principal Meridian,  
Town of Alvin, Forest County,  
Wisconsin

WISCRS - FOREST COUNTY  
N: 705,161.477 USft (XXX,XXX.XXX)  
E: 894,429.934 USft (XXX,XXX.XXX)  
Datum: NAD83 (2011)  
GNSS Method RTK  
GNSS Control WISCRS VRS



The coordinate value shown has been verified by the average of two or more GPS observations at a markedly different time. Coordinates shown in parenthesis are previously published values.

A-E 7.08(3)(b)

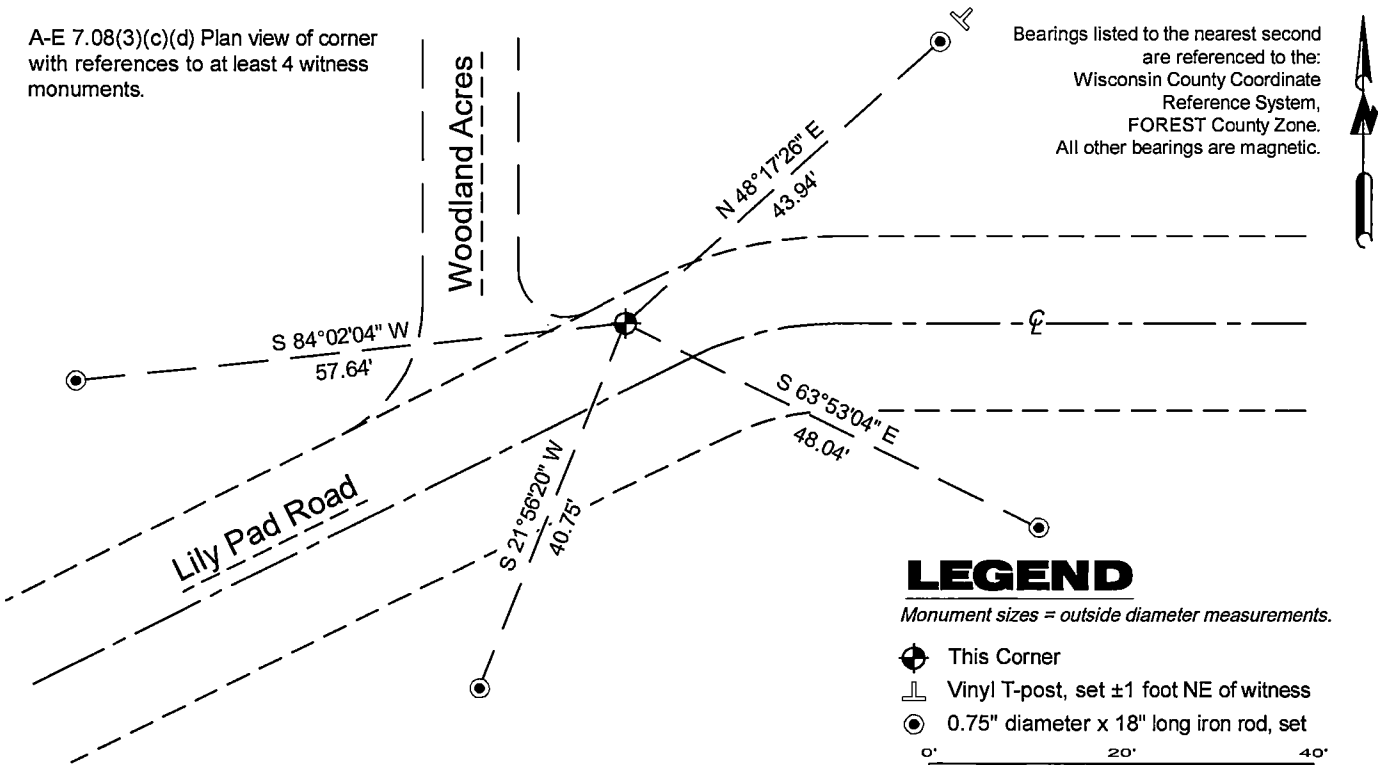
Original Surveyor: Artemas Curtis - June 1858  
Sugar 14 - S 50° W, 44 Links, Sugar 12 - N 78° W, 40 Links  
Sugar 22 - N 52° E, 28 Links, Yellow Birch 16 - S 54° E, 44 Links

THENCE:

- July 1, 1944-August 10, 1950 - Cadastral Engineer - Hugh B. Crawford - United States Department of the Interior, General Land Office, Bureau of Land Management - indicates that the corner position "is determined on the centerline of a gravelled road" and established a witness corner 33 feet south, being a "concrete monument, 24 ins. long, 6 ins. diam., 18 ins. in the ground, and in a collar of stone, with an iron post, 23 ins. long, 1 in. diam., embedded in the center, with a brass cap mkd" on page 17 of his Dependent Resurvey notes. Crawford also indicates "At the corner point - set a concrete monument, 12 ins. long, 6 ins. diam., 30 ins. in the ground."
- 1981 - Surveyor 1107 - William B. Cochrane - indicates this position as "Dependent Resurvey monument" on Forest Co. record Map #401424-19831102.
- 1987 - Surveyor 1107 - William B. Cochrane - indicates this position as "6 inch diameter concrete monument with brass cap" on Florence Co. record Map #C1100.
- February 1, 2001 - Surveyor 1634 - Gary Lee Pisoni - indicates this position as "P.K. Nail set" on Florence Co. record Map #M0619.
- June 6, 2006 - Surveyor 1634 - Gary Lee Pisoni - indicates this position as "3/4" iron bar found" on Florence Co. record Map #M0618.
- September 22, 2015 - Surveyor 809-8 - Michael S. Hess indicates this position as "concrete monument" on Florence Co. record Map #M0615.

December 10, 2024 - In performing the 2024 - Forest County - "PLSS Corner Remonumentation and GPS Services" project, I found a 0.75" diameter iron rod near the westerly extension of the centerline of Lily Pad Road. The monument is bent to the northwest and is ±2" below the asphalt grade. I did not find Crawford's concrete witness corner (south 33'), Cochrane's bearing trees, or Pisoni's 3/4" x 24" rebar, set N00°29'47"E, 33.05 feet as shown on Florence Co. record Map #M0618. I established 4 new reference monuments as shown below.

A-E 7.08(3)(c)(d) Plan view of corner with references to at least 4 witness monuments.



A-E 7.08(3)(e) 1858 Surveyor set a post, 1944 Surveyor set a concrete monument, 12 ins. long, 6 ins. diam., 30 ins. in the ground, 1981 & 1987 Surveyor finds the same, 2001 Surveyor finds a "P.K. Nail, 2006 Surveyor finds 3/4" iron bar, 2015 Surveyor finds a conc.monument . In 2024, I found a 0.75" diameter iron rod

A-E 7.08(3)(f) I accept this monument in good faith as a FOUND PERPETUATED LOCATION of the corner.

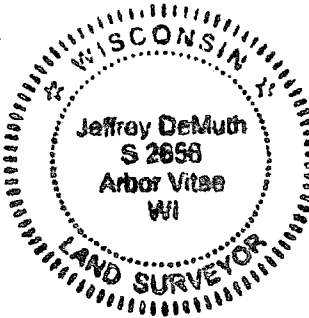
A-E 7.08(3)(g)(h) This corner was not determined through lost-corner-proportionate methods.

A-E 7.08(3)(i) I, Jeffrey L. DeMuth, Professional Land Surveyor No. S-2656, hereby certify that the corner location on this record was determined by me or under my direction and control, and that this U.S. Public Land Survey Monument Record is correct and complete to the best of my knowledge, and belief.

SIGNATURE

December 18, 2024

DATE



44014130000

44014130000

N25