

U.S. PUBLIC LAND SURVEY MONUMENT RECORD

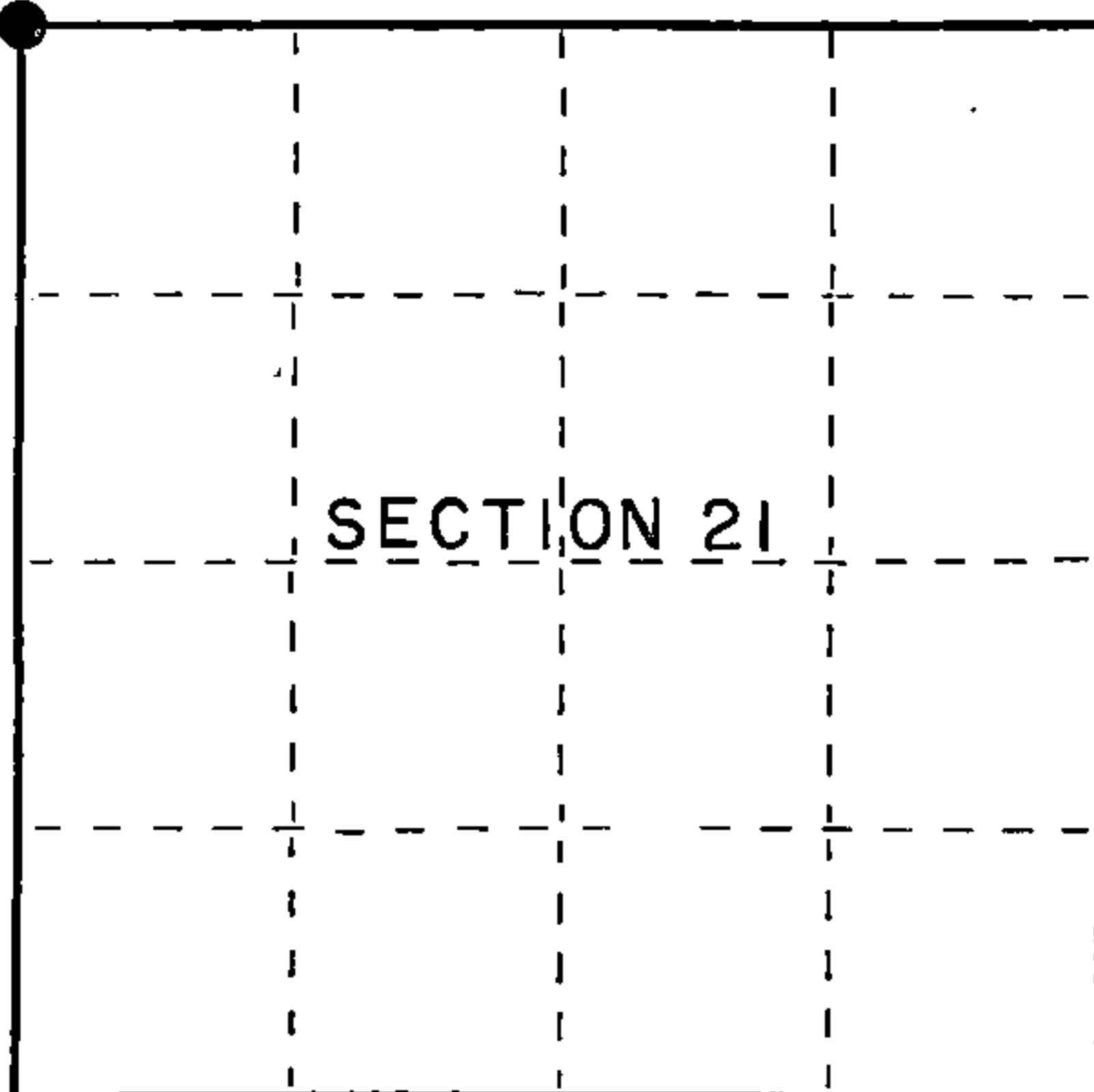
Index No. **N-9**

State of Wisconsin }
County of Forest } ss.

I, Gary L. Pisoni, do hereby
certify that on the 24th day
of June, 1986, I found
evidence of the Northwest
corner of Section 21
Township 40, North, Range
14E, Fourth Principal Meridian,
as described hereon; and that from this evidence
I established a new monument and accessories
as described hereon to perpetuate the original
location of this corner.

Resident witnesses:

Kyle Erickson



○ = Corner monument restored.

History of original corner establishment:

Original Government Survey in 1865 by Wm. E. Daugherty. Dependent resurvey of 1950 found the remains of the original bearing trees and a 4" squared cedar post. On 6/9/70, Jean Resvick, a land surveyor with the U.S. Forest Service replaced the cedar post point with a 2½" diameter by 5' long galvanized iron pipe with a brass cap stamped: T40N, R14E, S16, S17, S20, S21, 1970, S-802 from which the following bear:

Maple	12"	S.41°54'W.	42.77 feet
Balsam	5"	N.32°16'W.	16.05 feet
Northwest corner of cabin		S.81°17'E.	52.55 feet

Description of corner evidence found:

Monument as described and in place, from which the following bear:

Maple	15"	S.41°54'W.	42.77 feet
Balsam	8"	N.32°16'W.	16.05 feet
Northwest corner of cabin		S.81°17'E.	52.55 feet
Steel sign post		N.27°W.	1.5 feet

Description of monument and accessories I established to perpetuate the original location of this corner.

Blazed and scribed the following new bearing tree:

Balsam	8"	S.34°E.	9.46 feet
--------	----	---------	-----------

Dated at Iron River, MI, Wis, this 2nd day of November, 1987.

Signature Gary L. Pisoni Title Land Surveyor Registration No. S-1634
(County Surveyor, Registered Land Surveyor, or other duly authorized official)

Office of Register of Deeds, County of Forest, I hereby certify that the within instrument was filed in this office for record on the 18th day of March, 1988 at 12:50 o'clock P. M.

Paul Ackendraner
(Register of Deeds)

By _____ Deputy

44014170000

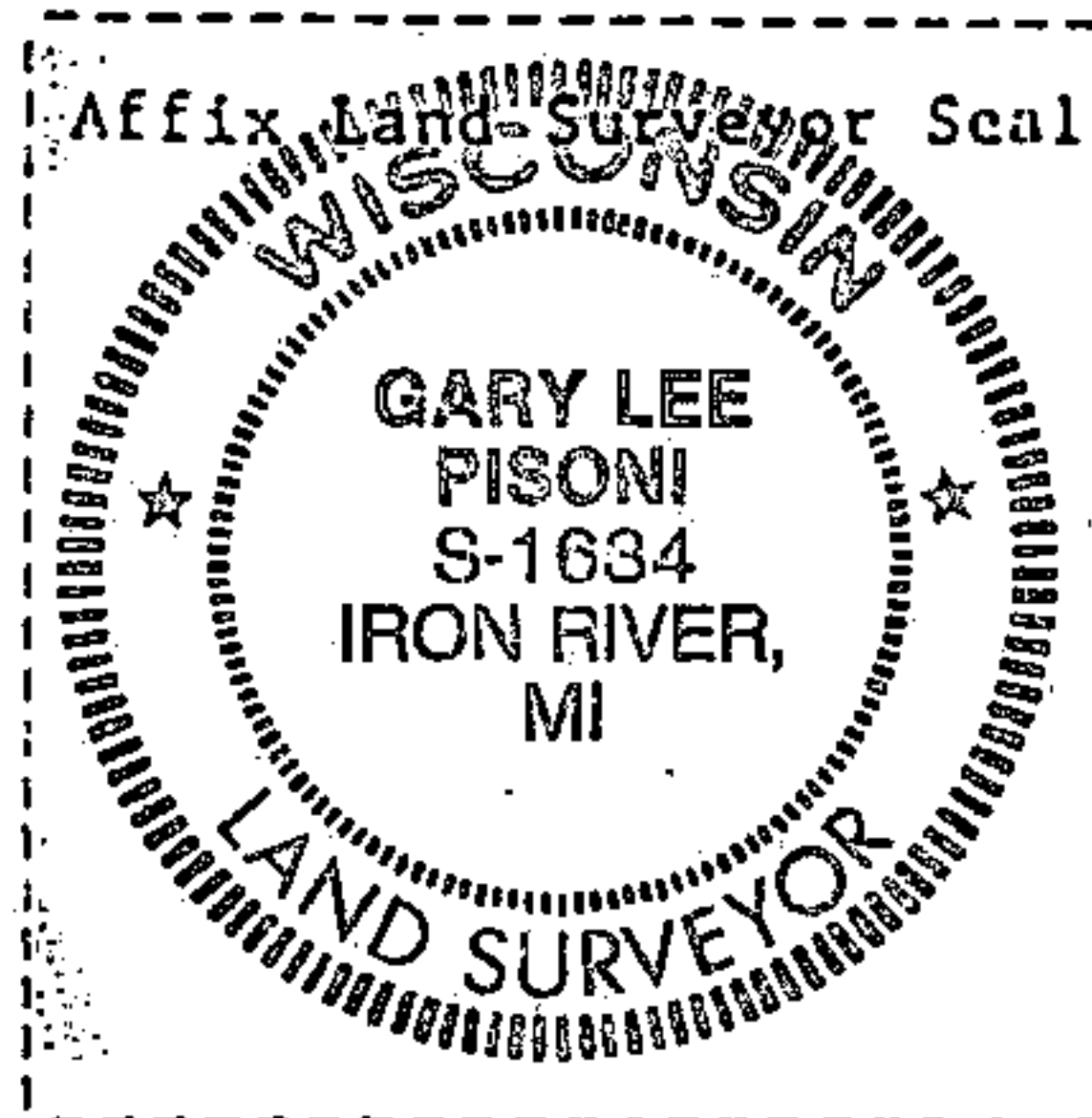
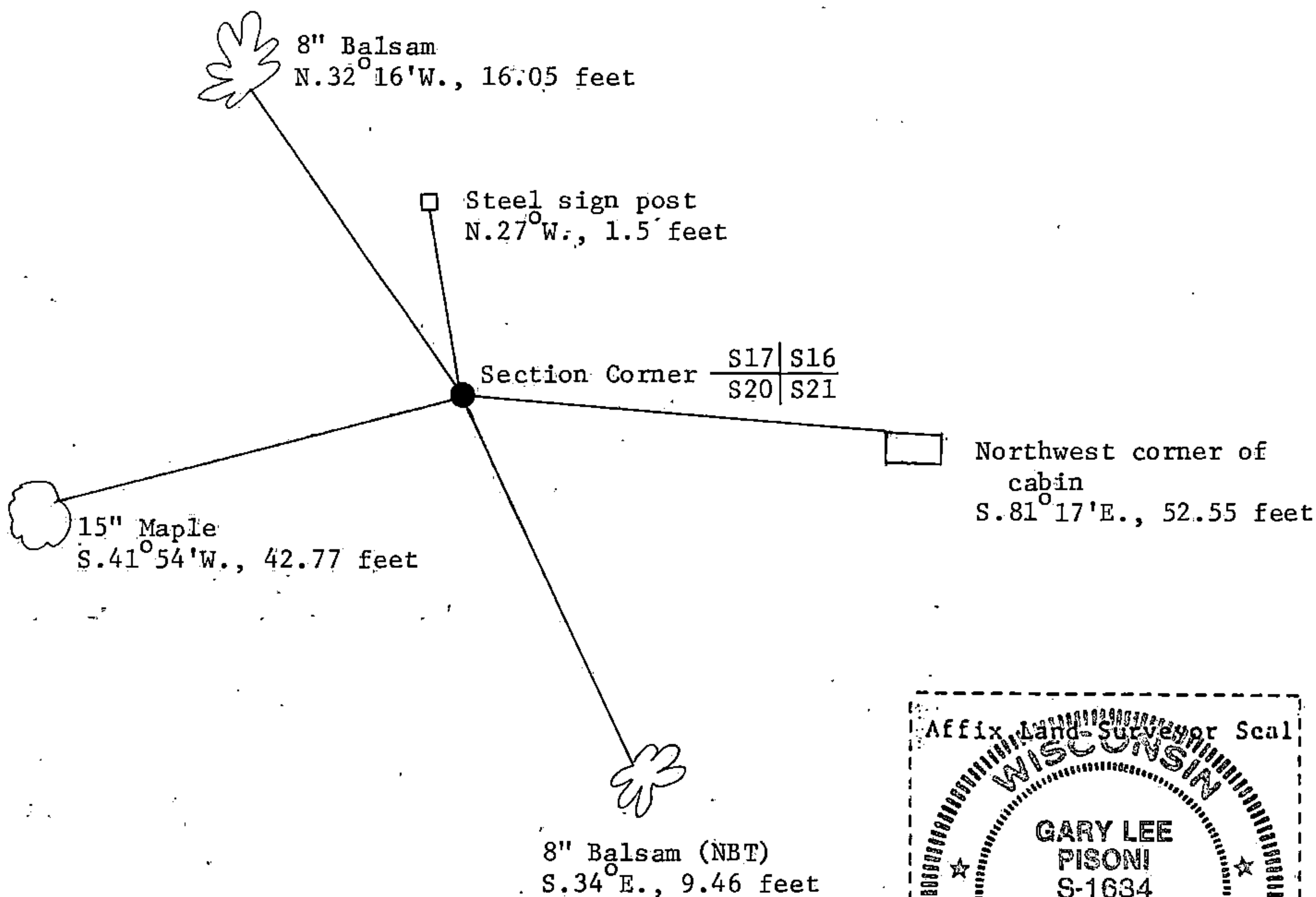
(e) Describe any material discrepancy between the location of the corner as restored or reestablished and the location of that corner as previously restored or reestablished by distance and direction. Show the discrepancy on the plan view drawing under (d), above. Show the distances between the corner as previously restored or reestablished and (1) the corner as restored or reestablished, and (2) to at least 2 of the witness monuments shown on the drawing in (d), above.

See Drawing Below.

(f) Was the corner restored through acceptance of (1) an obliterated evidence location, or, (2) a found perpetuated location?

Restored through acceptance of a found perpetuated location.

(g&h) Was the corner reestablished through lost corner proportionate methods? If so, show the method, including the directions and distances to other public land survey corners used as evidence or used for proportioning in determining the corner location?



(i) I, Gary L. Pisoni
(type or print name) certify that the corner location shown on this record was determined by me or under my direction and control and that this U.S. Public Land Survey Monument Record is correct and complete to the best of my knowledge and belief.

Signature

Date

Survey requested by:

District Ranger

Date