

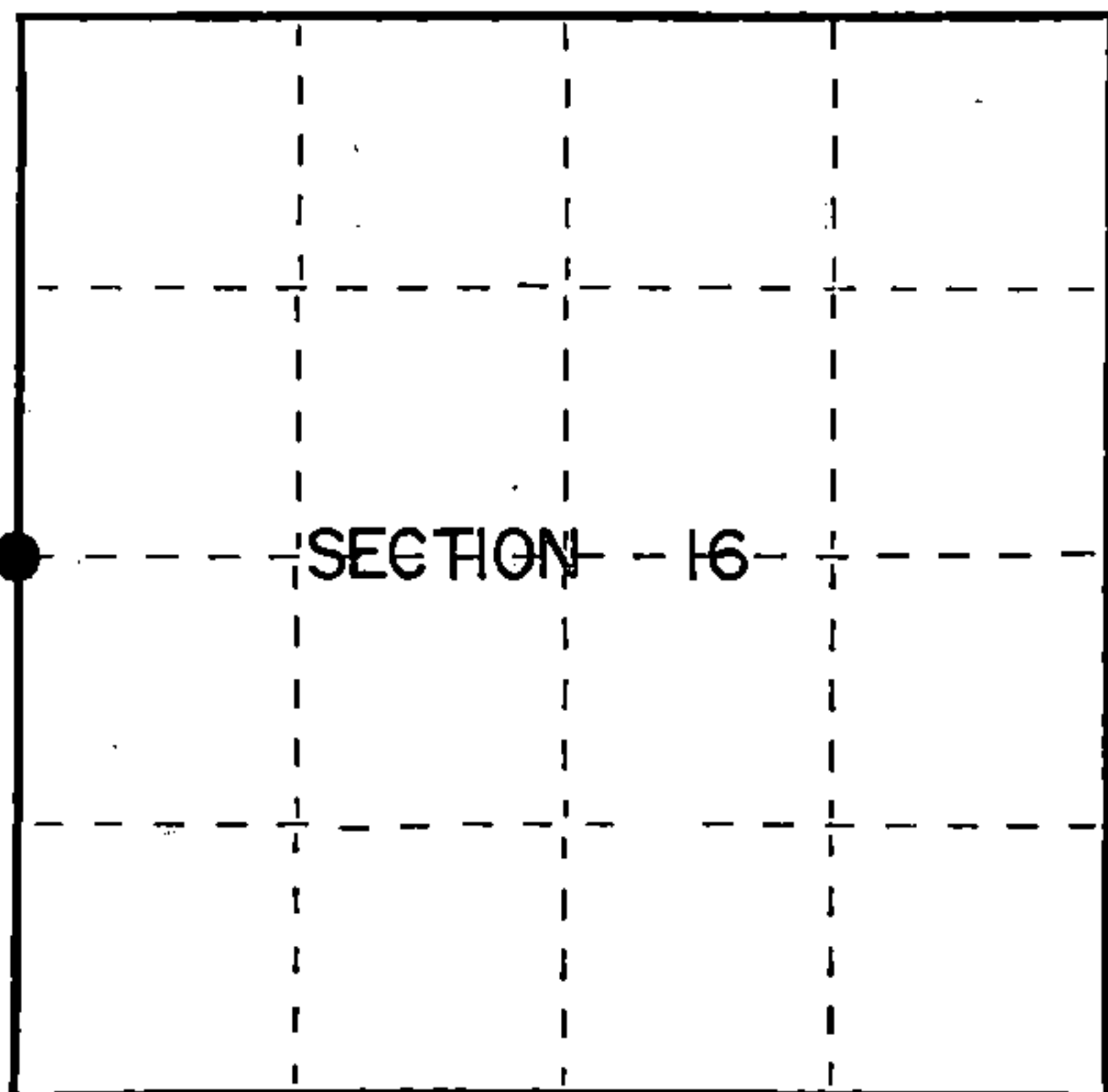
U.S. PUBLIC LAND SURVEY MONUMENT RECORD

Index No. L-9

State of Wisconsin }
 County of Forest } ss.

I, Gary L. Pisoni, do hereby
 certify that on the 9th day
 of September, 1986, I found
 evidence of the West quarter
 corner of Section 16
Township 40, North, Range
14 East, Fourth Principal Meridian,
 as described hereon; and that from this evidence
 I established a new monument and accessories
 as described hereon to perpetuate the original
 location of this corner.

Resident witnesses:

Mark Selmo

○ = Corner monument restored.

History of original corner establishment:

Original Government Survey in 1865 by Wm. E. Daughterty. North between
 Sections 16 and 17, 40 chains, set Quarter post to Sections 17 and 16, from which
 the following bear:

Sugar Maple	12"	N.22°W.	8 links
Sugar Maple	6"	N.31°E.	50 links

Description of corner evidence found:

No corner evidence was recovered.

The corner position is re-established at proportionate distance and on line
 between the Northwest and Southwest Section corners of Section 16.

Description of monument and accessories I established to perpetuate the original location of this corner.

At the corner position, set a 2½ inch diameter aluminum pipe monument, 3 feet long,
 33" in the ground, with an aluminum cap stamped: T40N, R14 E, 1/4, S17, S16, 1986,
 S-1634. From which the following new blazed and scribed bearing trees bear (all
 measurements taken to a nail in side of tree):

Red Pine	6"	N.27°E.	24.61 feet
White Spruce	6"	S.41°E.	10.78 feet
White Spruce	10"	S.60°W.	15.26 feet
Steel Sign post		N.40°W.	0.90 feet

Dated at Iron River, MI, xxx this 5th day of May, 1987.

Signature Gary L. Pisoni Title Land Surveyor Registration No. S-1634
 (County Surveyor, Registered Land Surveyor, or other duly authorized official)

Office of Register of Deeds, County of Forest
 instrument was filed in this office for record on the 18th day of March, 1988
 at 12:50 o'clock P. M. I hereby certify that the within

Paul A. Schendler
 (Register of Deeds)

By _____ Deputy

44014172000

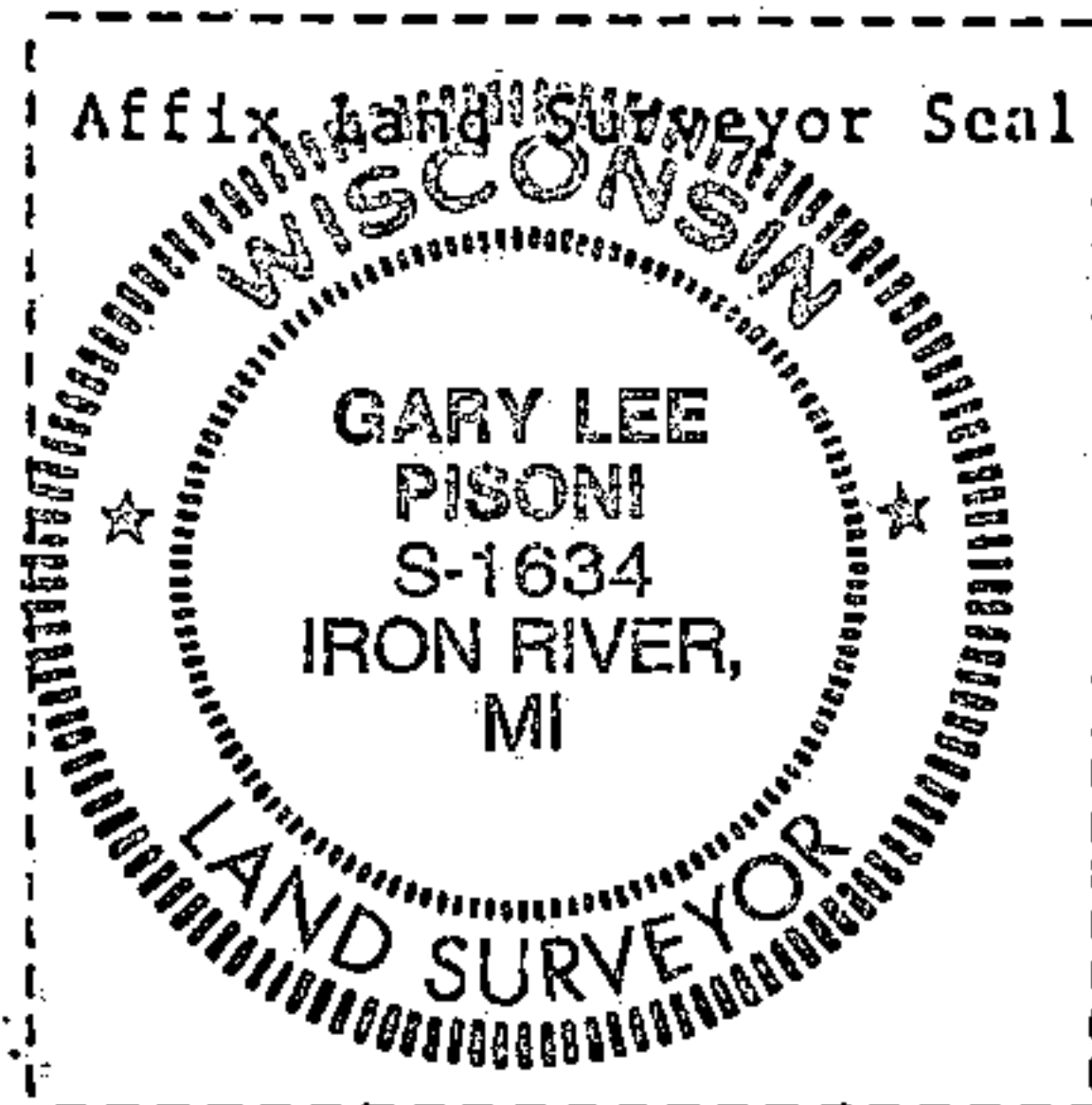
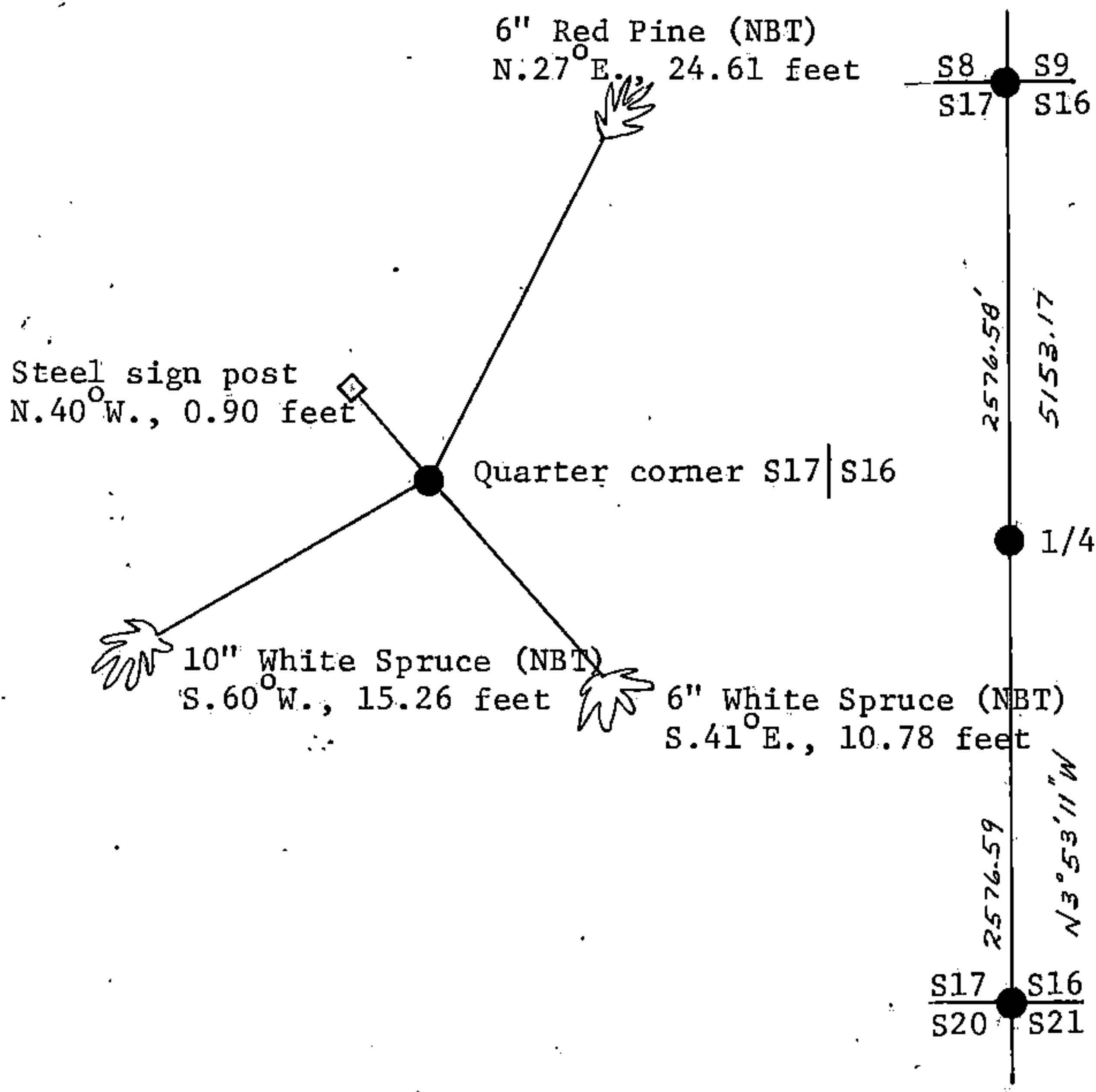
(e) Describe any material discrepancy between the location of the corner as restored or reestablished and the location of that corner as previously restored or reestablished by distance and direction. Show the discrepancy on the plan view drawing under (d), above. Show the distances between the corner as previously restored or reestablished and (1) the corner as restored or reestablished, and (2) to at least 2 of the witness monuments shown on the drawing in (d), above.

See drawing below.

(f) Was the corner restored through acceptance of (1) an obliterated evidence location, or, (2) a found perpetuated location?

Restored through lost corner proportionate methods.

(g&h) Was the corner reestablished through lost corner proportionate methods? If so, show the method, including the directions and distances to other public land survey corners used as evidence or used for proportioning in determining the corner location?



(i) Gary L. Pisoni
(type or print name) certify that the corner location shown on this record was determined by me or under my direction and control and that this U.S. Public Land Survey Monument Record is correct and complete to the best of my knowledge and belief.

Signature Gary L. Pisoni Date May 5th 1987

Survey requested by: Edward [Signature] District Ranger Date 3-8-88