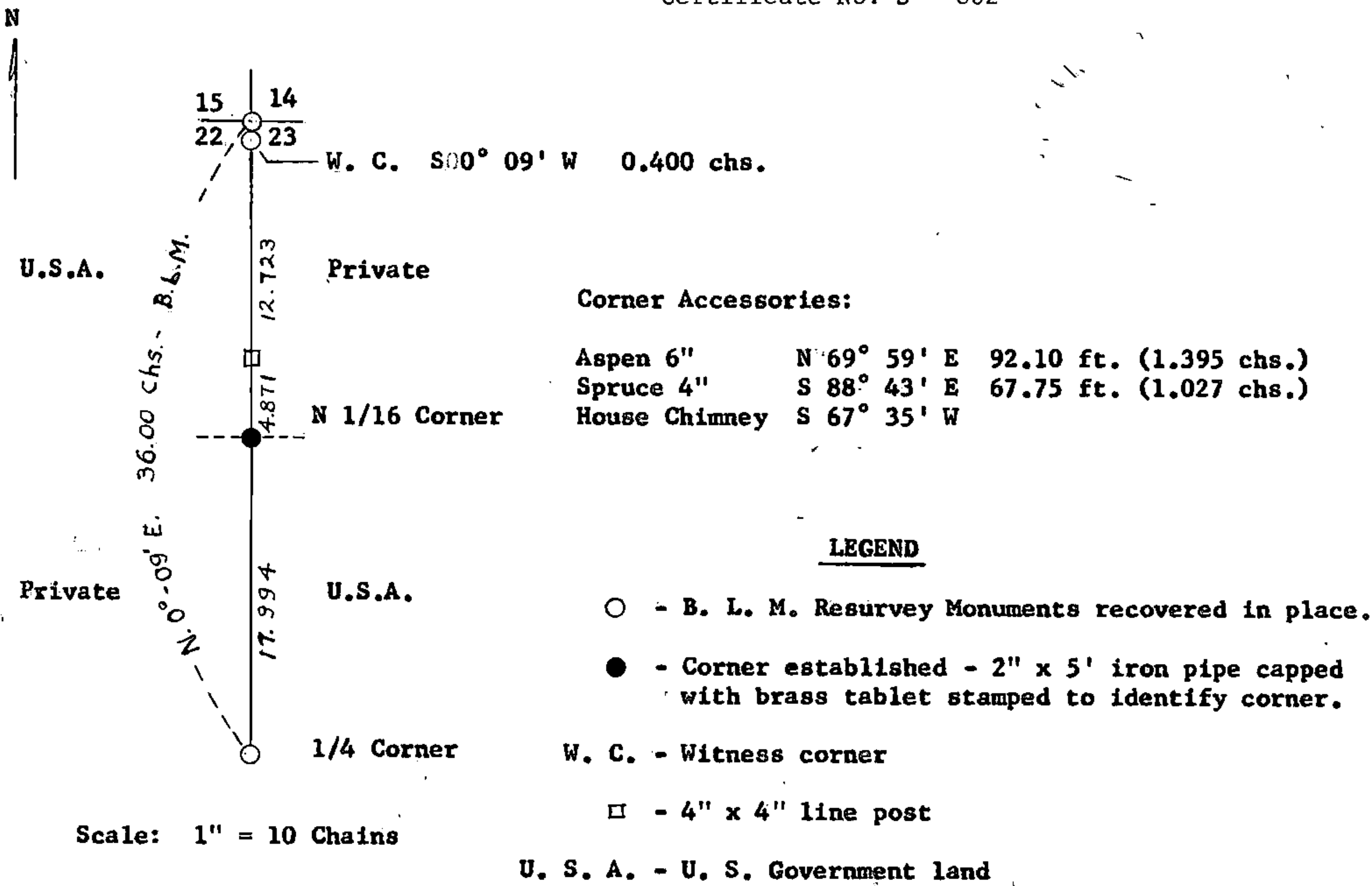


CERTIFIED LAND CORNER ESTABLISHMENT

State of Wisconsin)
County of Forest) SS

I, Jean F. Resvick, do hereby certify that on the 9th day of January 1964, I established the north sixteenth corner to sections 22 and 23, Township 40 North, Range 14 East, Fourth Principal Meridian, in accordance with the rules for the subdivision survey of the public lands. The plat map hereon is a correct representation of the method used and of the monument and accessories as established and described to perpetuate the location of this corner.

Jean F. Resvick
Cadastral Surveyor - U. S. Forest Service
Wisconsin Registered Land Surveyor
Certificate No. S - 802



89298

Office of Register of Deeds County of Forest

I hereby certify that the within instrument was filed in this office for record on the 21st day of October 1964, and was filed in Book No. 1 Page No. 0-17

of County Records as Document No. 89298 . 11 AM
(Corner Restorations)

44014 22 3000

Signature *Anna Peterson*
Title Register of Deeds