

U.S. PUBLIC LAND SURVEY MONUMENT RECORD

Index No. R-17,18

State of Wisconsin } ss.
County of Forest

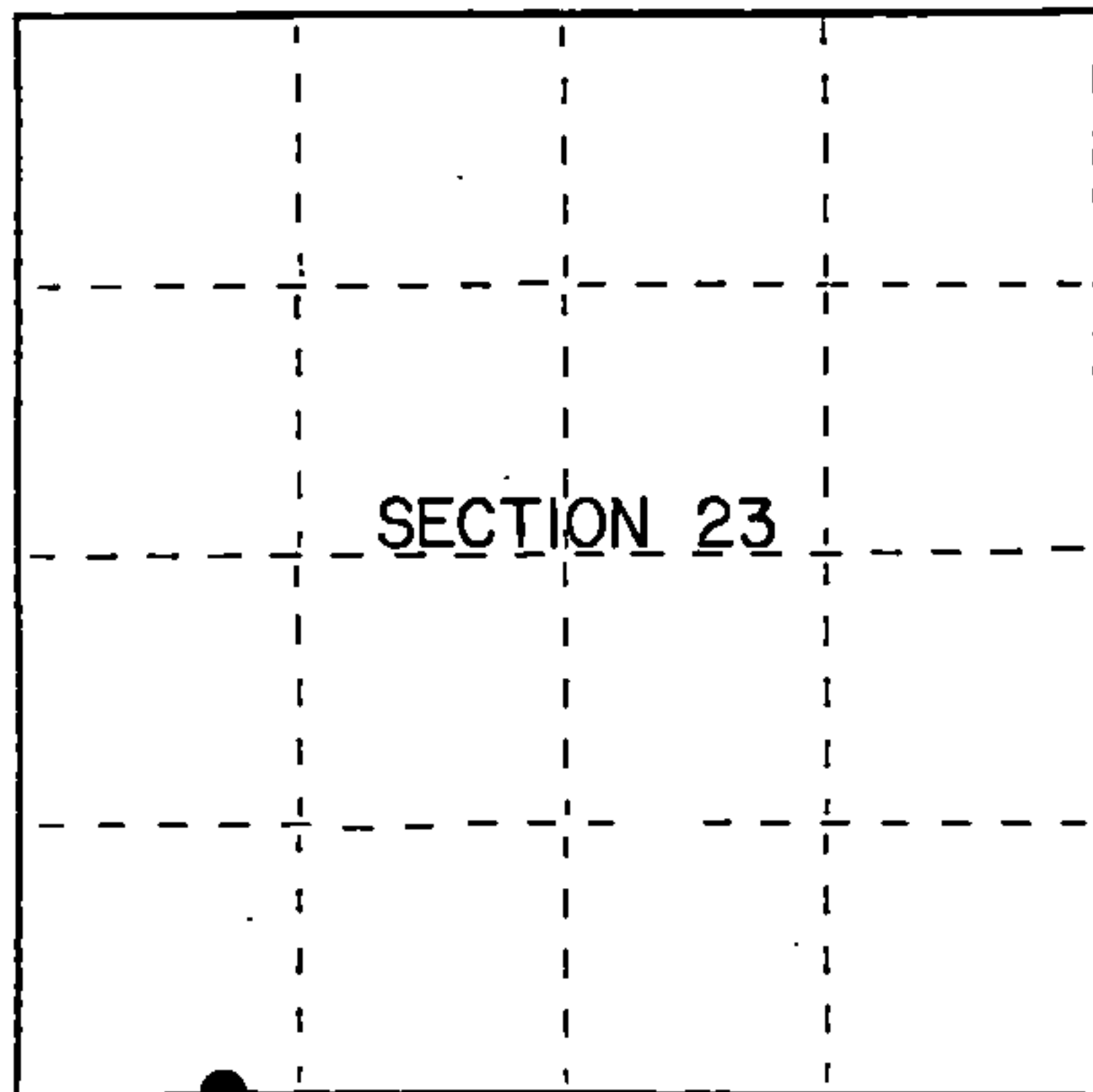
I, Gary L. Pisoni, do hereby
certify that on the 7th day
of November, 19 89, I found
evidence of the West meander
corner of Section 23 and 26
Township 40, North, Range
14 East, Fourth Principal Meridian,
as described hereon; and that from this evidence
I established a new monument and accessories
as described hereon to perpetuate the original
location of this corner.

Resident witnesses:

.....

.....

.....



● = Corner monument restored.

History of original corner establishment:

Dependent Resurvey in 1950 by Hugh B. Crawford; N 85°25'W from East meander corner between Sections 23 and 26 over Stevens Lake to 51.64 chains, point for the West meander corner, at proportionate distance, falls in lake, at 65.51 chains intersect the West shore of Stevens Lake and set an iron post for the West M.C.

Description of corner evidence found:

In the spring of 1989, looked for the West M.C. between Sections 23 and 26, but shoreline along Stevens Lake has eroded and M.C. is now missing.

Reset West M.C. 22 feet West of shoreline on line between East M.C. and SW section corner of Section 23.

Description of monument and accessories I established to perpetuate the original location of this corner.

At the corner position, set a 2½" diameter aluminum pipe monument, 5' long, 3" above the ground with an aluminum cap stamped: T40N, R14E, S-23, S-26, M.C., 1989, S-1634, from which the following new blazed and scribed bearing trees bear: (measurements taken to a nail in side of tree)

Cedar	13"	N 18°W	32.42 feet
Spruce	11"	S 53°W	60.87 feet
White Birch	9"	N 89°W	37.46 feet
Steel sign post		N 85°E	0.82 feet
Steel sign post		South	0.82 feet

Dated at Iron River, MI, ~~Wis.~~, this 9th day of December, 1989.

Signature Gary L. Pisoni Title Land Surveyor Registration No. S-1634
(County Surveyor, Registered Land Surveyor, or other duly authorized official)

Office of Register of Deeds, County of Forest, I hereby certify that the within
instrument was filed in this office for record on the 20th day of September, 1990
at 10:45 o'clock A. M.

(Register of Deeds)

By Debra Clifton Deputy

44014 2300.32

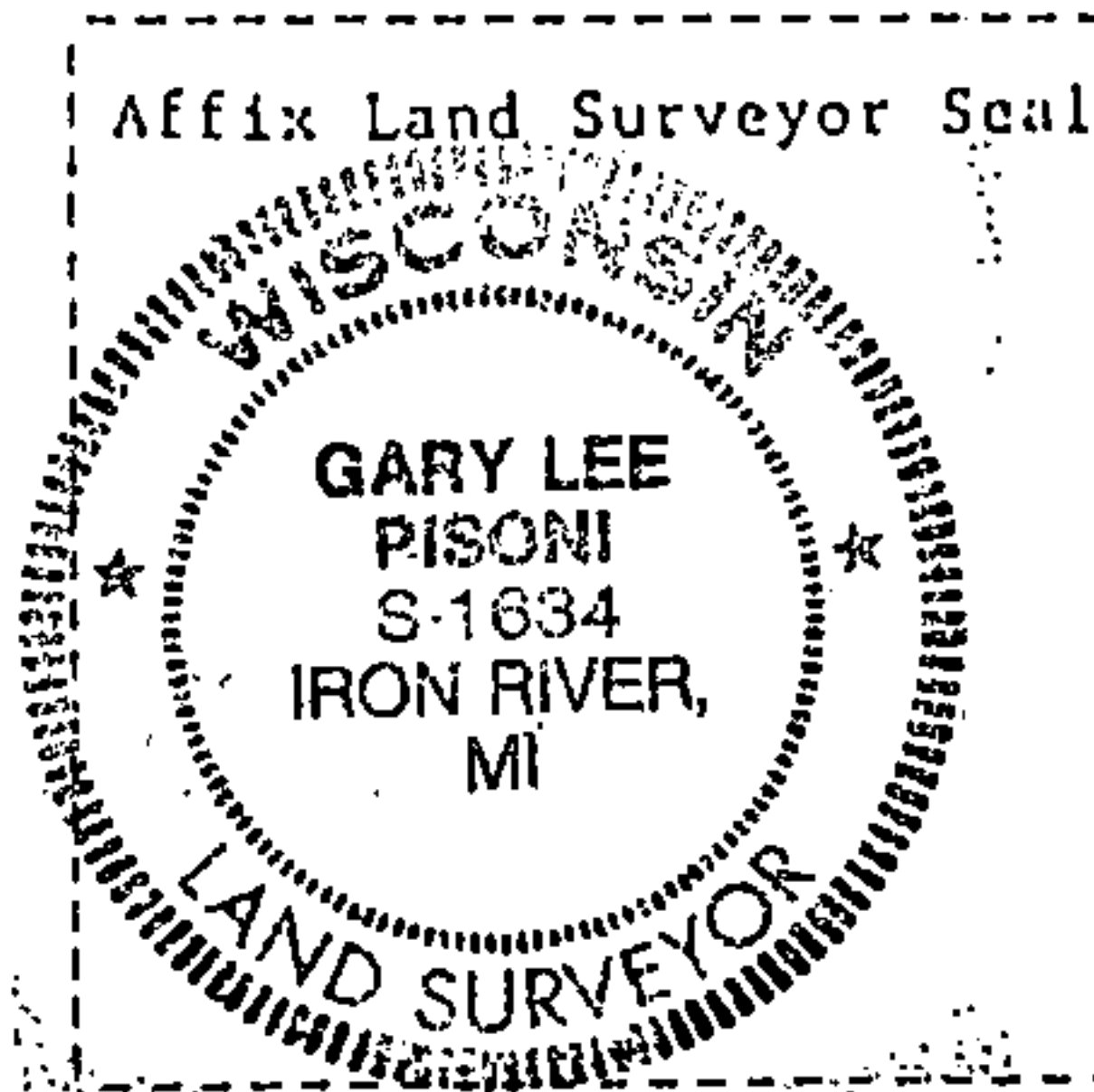
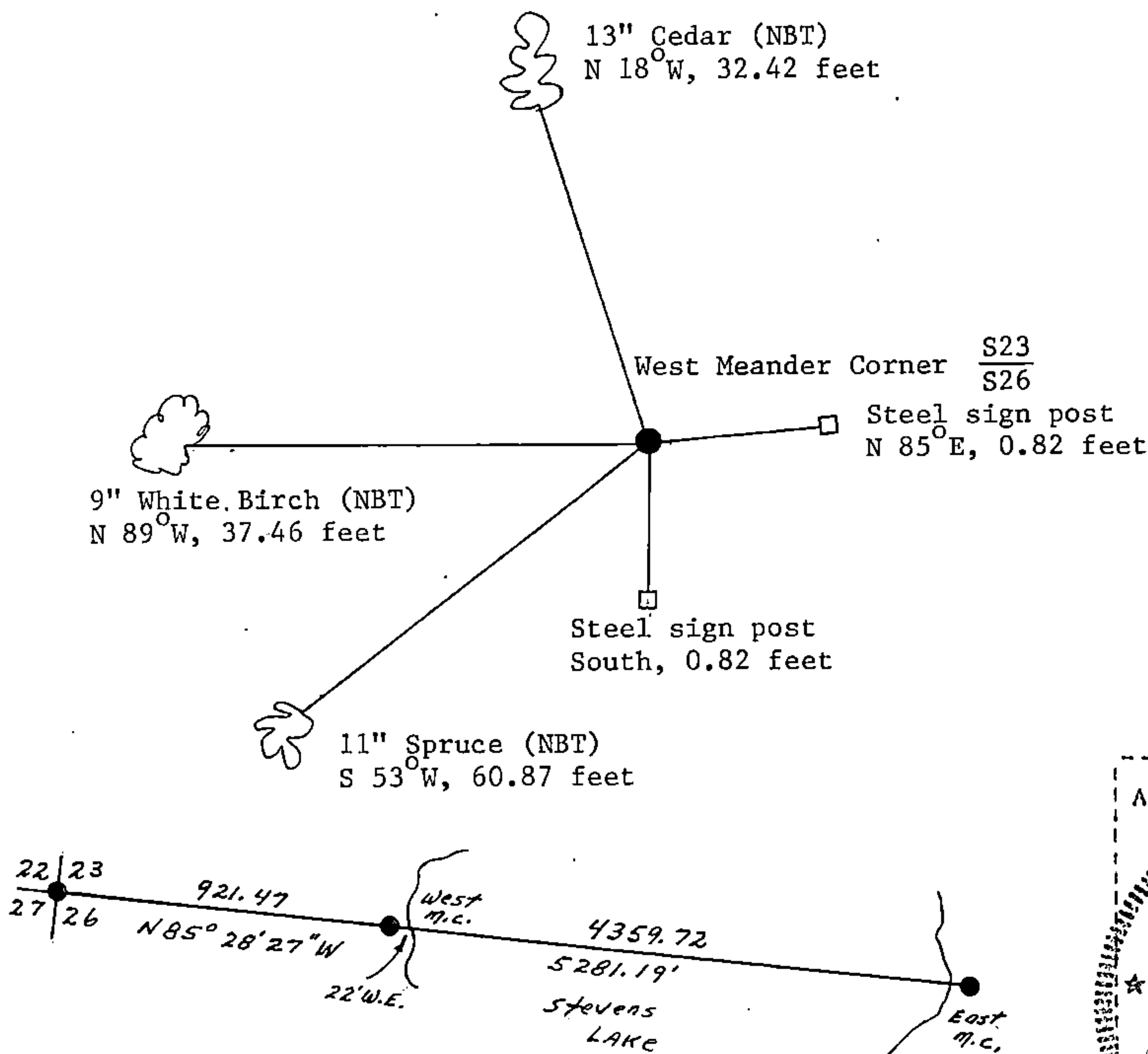
- e) Describe any material discrepancy between the location of the corner as restored or reestablished and the location of that corner as previously restored or reestablished by distance and direction. Show the discrepancy on the plan view drawing under (d), above. Show the distances between the corner as previously restored or reestablished and (1) the corner as restored or reestablished, and (2) to at least 2 of the witness monuments shown on the drawing in (d), above.

See drawing below.

- (f) Was the corner restored through acceptance of (1) an obliterated evidence location, or, (2) a found perpetuated location?

Restored through lost corner proportionate methods.

- (g&h) Was the corner reestablished through lost corner proportionate methods? If so, show the method, including the directions and distances to other public land survey corners used as evidence or used for proportioning in determining the corner location?



- (i) 1. Gary L. Pisoni
(Type or print name) certify that the corner location shown on this record was determined by me or under my direction and control and that this U.S. Public Land Survey Monument Record is correct and complete to the best of my knowledge and belief.

Signature Gary L. Pisoni Date Jan 12 1990

Survey requested by: [Signature] District Ranger Date 5-19-90